



Western Michigan University  
ScholarWorks at WMU

---

Werner Sichel Lecture Series

Economics

---

1994

## The Economics of Rich and Poor: The Political Economy of Income Redistribution 1994-95

Department of Economics

Follow this and additional works at: <https://scholarworks.wmich.edu/sichel-series>



Part of the Economics Commons

---

### WMU ScholarWorks Citation

Department of Economics, "The Economics of Rich and Poor: The Political Economy of Income Redistribution 1994-95" (1994). *Werner Sichel Lecture Series*. 24.

<https://scholarworks.wmich.edu/sichel-series/24>

This Article is brought to you for free and open access by the Economics at ScholarWorks at WMU. It has been accepted for inclusion in Werner Sichel Lecture Series by an authorized administrator of ScholarWorks at WMU. For more information, please contact [wmu-scholarworks@wmich.edu](mailto:wmu-scholarworks@wmich.edu).





## 1994-95 Lecture-Seminar Series

Western Michigan University  
College of Arts and Sciences  
Department of Economics  
Kalamazoo, Michigan 49008-5023

The Economics of Rich and Poor is the thirty-first Annual Public Lecture Series conducted by the Department of Economics at Western Michigan University. This series is co-sponsored by the Department of Economics and the W.E. Upjohn Institute for Employment Research. All lectures are open to the public. For further information contact Professor Jon Neill (387-5551) or the Department of Economics (387-5535).

The guest scholars also present a seminar for professional economists, graduate students, and advanced undergraduates. These seminars are held at 3:00 pm. The seminar is offered for academic credit to students enrolled at Western Michigan University. Interested members of the public are also welcome.

Directions: From I-94, take U.S. 131 north to Exit 36A (Stadium Drive). Travel east on Stadium Drive to the 4th traffic light at Howard. Turn left onto Howard Street and take the second right onto the WMU campus. Follow the signs to the Miller Auditorium parking ramp. Knauss Hall is the dark brick building opposite the Waldo Library clock tower.



printed on recycled paper

## WESTERN MICHIGAN UNIVERSITY

College of Arts and Sciences  
Department of Economics  
1994-95 Lecture-Seminar Series  
**The Economics of Rich and Poor: The Political Economy of Income Redistribution**

Wednesday evenings  
8:00 p.m.  
3750 Knauss Hall

### Fall Semester

**Gordon Tullock**  
University of Arizona  
September 14, 1994

**Timothy Smeeding**  
Syracuse University  
October 5, 1994

**Robert Haveman**  
University of Wisconsin  
November 16, 1994

### Winter Semester

**John Formby**  
University of Alabama  
January 25, 1995

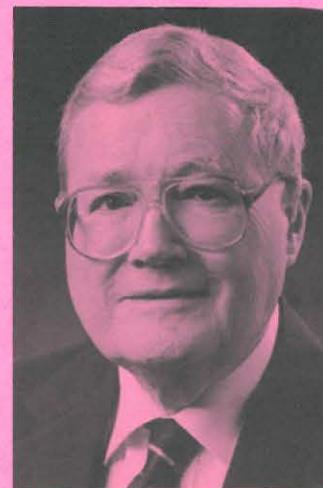
**Rebecca Blank**  
Northwestern University  
February 22, 1995

**Jere Behrman**  
University of Pennsylvania  
March 22, 1995

The Department of Economics, College of Arts and Sciences, gratefully acknowledges the co-sponsorship of this series by the W.E. Upjohn Institute for Employment Research, Kalamazoo, Michigan.

This series was organized by the Lecture-Seminar Series Committee whose members are Jon Neill (Chair), Kevin Hollenbeck, William Kern, and Paul Thistle.

## The Reality of Redistribution



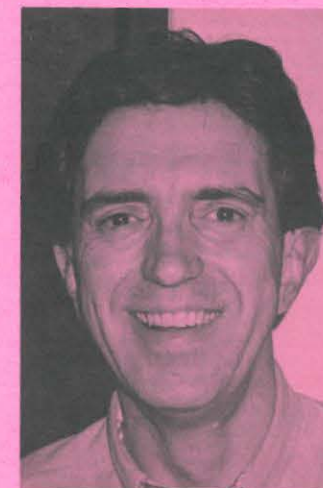
**Gordon Tullock**  
Karl Eller Professor of Economics  
and Political Science  
University of Arizona

Wednesday,  
September 14, 1994  
8:00 p.m.  
3750 Knauss Hall  
WMU

Professor Tullock received a J.D. degree in 1947 from the University of Chicago. He is currently the Karl Eller Professor of Economics and Political Science at the University of Arizona. Professor Tullock is well-known for his research on the forces shaping the distribution of income, as well as for his many contributions to other areas of political economy. His book, *The Calculus of Consent*, is one of the most well-known treatises on the interplay between economic interests and politics. Professor Tullock is also the founding editor of one of the most influential journals in that area, *Public Choice*.

Professor Tullock will also present a seminar at  
3:00 p.m.

## Changing Patterns of Income Inequality in Modern Nations



**Timothy Smeeding**  
Professor of Economics and Public Administration  
Syracuse University

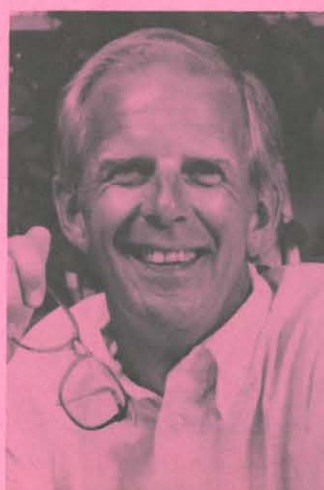
Wednesday  
October 5, 1993  
8:00 p.m.  
3750 Knauss Hall  
WMU

Professor Smeeding received his Ph.D. in Economics from the University of Wisconsin in 1975. He is currently a Professor of Economics and Public Administration in the Maxwell School of Citizenship and Public Affairs at Syracuse University. Professor Smeeding has published numerous books, monographs, and articles on a range of topics relating to income distribution, poverty, and inequality. Since 1983, Professor Smeeding has been Overall Project Director of the Luxembourg Income Study. Past positions include Chair of the Economics of Aging Interest Group, Gerontological Society of America, and Director, Center for the Study of Families, Children, and Elderly at Vanderbilt University.

Professor Smeeding will also present a seminar  
at 3:00 p.m.



## Levelling the Ground: New Policy for New Poverty



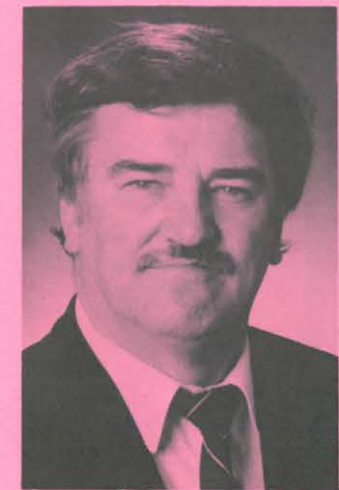
Wednesday  
November 16, 1993  
8:00 p.m.  
3750 Knauss Hall  
WMU

**Robert Haveman**  
John Bascom Professor of Economics  
and Public Administration  
University of Wisconsin

Professor Haveman received his Ph.D. in Economics from Vanderbilt University in 1963. His research has touched on a wide range of topics, including unemployment, cost-benefit analysis, environmental economics, and income transfer programs. Currently, Professor Haveman is John Bascom Professor of Economics and Public Affairs at the University of Wisconsin, Madison, and a Research Associate in the University's Institute for Research on poverty. He also is on the board of editors of four scholarly journals, and was co-editor from 1985 to 1991 of one of the most widely read and prestigious economics journals, *The American Economic Review*.

Professor Haveman will also present a seminar  
at 3:00 p.m.

## Regional and Subgroup Differences in Poverty and Inequality



Wednesday  
January 25, 1995  
8:00 p.m.  
3750 Knauss Hall  
WMU

**John Formby**  
James Patrick and Elizabeth Brannan Hayes  
Professor of Economics  
University of Alabama

Professor Formby received his Ph.D. in Economics from the University of Colorado in 1965. He is the James Patrick and Elizabeth Brannan Hayes Professor at the University of Alabama. Professor Formby's voluminous research has explored various questions relating to income distribution and redistribution. But he has also published many articles on such varied topics as regulation, taxation, and imperfect competition. Professor Formby has received a number of awards and research grants. He also served as a Senior Economist for the President's Council on Wage and Price Stability.

Professor Formby will also present a seminar at  
3:00 p.m.

## The Impact of Economic Growth on Poverty and Inequality



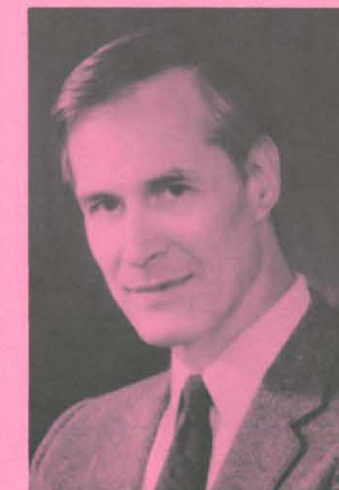
Wednesday  
February 22, 1994  
8:00 p.m.  
3750 Knauss Hall  
WMU

**Rebecca Blank**  
Associate Professor of Economics  
Northwestern University

Professor Blank was awarded her Ph.D. in Economics by the Massachusetts Institute of Technology in 1983. She was a Senior Staff Economist on the President's Council of Economic Advisors, and is currently an Associate Professor in the Department of Economics at Northwestern University. Professor Blank was the 1993 recipient of the David Kershaw Prize, awarded biannually by the Association of Public Policy and Management to the scholar under forty whose research has had the most impact on public policy. She has conducted research on a variety of topics relating to the causes of poverty, and is the author of a number of important articles on the relationship between macroeconomic performance and poverty.

Professor Blank will also present a seminar at  
3:00 p.m.

## From Parent to Child: Intrahousehold Allocations and Intergenerational Relations in the United States



Wednesday  
March 22, 1994  
8:00 p.m.  
3750 Knauss Hall  
WMU

**Jere Behrman**  
W.R. Kenan, Jr. Professor of Economics  
University of Pennsylvania

Professor Behrman received his Ph.D. in Economics from the Massachusetts Institute of Technology in 1966. He is the W.R. Kenan, Jr. Professor of Economics at the University of Pennsylvania. Professor Behrman is well-known for his research on economic development. He has had a particular interest in the role of human resources in development, and has recently conducted a number of studies on the intergeneration transmission of poverty. Professor Behrman has been a consultant on over thirty World Bank studies and projects. He has also been a consultant on studies and projects by USAID, the National Institute of Health, and many other agencies.

Professor Behrman will also present a seminar at  
3:00 p.m.