



Event set to welcome new dean

A reception to welcome the new dean of the College of Education and Human Development will be held from 4 to 6 p.m. Wednesday, Oct. 30, in the second-floor lobby of Sangren Hall. Ming Li, formerly with Ohio University, became the education college's new dean Sept. 1. The event will also acknowledge the new art installations in Sangren Hall.

Art studio launches online store

The Creative Abilities Art Studio in the Center for Disability Services has launched an online store. All art for sale in the store is created by adults with disabilities during on-campus skill-building programs. Proceeds from sales go back to the artists and toward buying supplies.

The disability services center, part of the College of Health and Human Services, is a multi-service agency that provides some 200,000 hours of service annually to more than 250 children and adults. It also gives WMU students opportunities for innovative learning and discovery in the field of disabilities.

Visit wmich.edu/disabilitycenter to view available artwork and other center products. Donations to the center may be made at mywmu.com through the WMU Foundation.

Time to apply for exchange program

WMU and the University of Passau are inviting their faculty members to apply for a short-term exchange this summer. WMU applicants should submit a brief letter of interest including a proposed list of topics they might like to speak on and a curriculum vitae by Wednesday, Nov. 6. German language skills are not required to apply. Visit wmich.edu/international/passau for more information. Direct questions to Michelle Metro-Roland, Haenicke Institute.

Flu shots available at Sindecuse

Influenza vaccinations continue to be available on a walk-in basis at the Sindecuse Health Center. Benefits-eligible employees and their covered dependents receive flu shots at no cost to them. Visit wmich.edu/news/2013/09/9030 for complete details or call Sindecuse at (269) 387-3393.

Two weeks left to nominate staffers

Nominations for the semiannual Make a Difference Award are due Thursday, Oct. 31. The award recognizes staff members who provide exceptional service to the University. Guidelines and nomination forms are available at wmich.edu/makeadifference.

Next employee mixer is Nov. 1

All faculty and staff are invited to a Fridays With Friends mixer from 4 to 6 p.m. Friday, Nov. 1, in the Fetzer Center. Complimentary light hors d'oeuvres and a cash bar will be available.

Board OKs \$1 million for alumni center

Acting at its Oct. 11 semiannual meeting, the WMU Alumni Association Board of Directors approved a measure to add \$1 million in association funds to help turn the core of East Hall into a new alumni center and return historic East Campus to everyday use.

The decision comes on the heels of an Oct. 1 announcement by Mark Jackson, board president, that each of the board's 22 directors also has made a personal financial commitment to the renovation effort. Earlier this year, the board unanimously approved a measure offering its support for the University's decision to focus all of its East Campus redevelopment efforts on renovating East Hall, the original building that was the birthplace of the University.

"As a board, we're committed to making sure the WMU Alumni Center is a world-class facility that provides a home for all alumni when they're on campus, honors

our University's heritage and triggers a 'wow' reaction from everyone who visits it," Jackson says.

The renovation of the core of East Hall into an alumni center was announced in December 2012 by the University. WMU has borrowed \$15 million to transform the 34,000-square-foot core of the building, but has said any amount spent above that figure must come from other sources, such as private donors. The core renovation, for which the Alumni Association funds will be used, is scheduled for completion in mid-2015.

Jackson notes that the board began looking last April at ways to leverage the University's commitment to East Hall. During the board's April meeting, the finance committee was asked to study the issue and bring a resolution back to the full board. The committee's recommendation, made

continued on page 4

Coming year will fundamentally change WMU, Dunn says

By this time next year, WMU will be an institution that is "a fundamentally changed organization," President John M. Dunn told a campus audience during his annual State of the University address Oct. 4.

Citing major initiatives that include a new medical school, a law school affiliation, new areas of research collaboration, the push to be a tobacco-free campus and reorganization of residential living, Dunn pointed to the University's ability to embrace change and its positive impact as one of its enduring traditions.

During his 30-minute speech, Dunn also outlined an extensive list of achievements



President Dunn gives his State of the University address. (Photo by Mike Lanka)

during the previous year and pointed to a number of challenges in the coming months and years. In addition, he explored campus enrollment trends and how they impact allocation of resources as well as assessed the current status of the University.

The State of the University address is a major element to WMU's annual Academic

Convocation, which also includes recognition of faculty and staff members who have won campuswide awards for service, teaching and scholarship.

The text of the address can be found online at wmich.edu/president. To listen to the address, visit campus radio station WMUK at <http://wmuk.org/post/wmu-state-university-address>.

Zhang Legacy Collections Center dedication slated

A spectacular new home for the historical records of southwest Michigan will be formally introduced to the community during a Friday, Oct. 18, dedication of WMU's Charles C. and Lynn L. Zhang Legacy Collections Center.

The ceremony is set for 4 to 5 p.m. at the new facility, which is located at 1650 Oakland Drive, just north of the intersection of Howard Street and Oakland Drive on the grounds of the former Kalamazoo State Hospital. The 16,000-square-foot, state-of-the-art facility is the new home to the WMU Archives and Regional History Collections.



Zhang Center (Photo by Mike Lanka)

The free public event will include guided tours of the center, a brief program and a reception. Included in the formal dedication program will be remarks by Charles Zhang as well as key WMU officials. To register for the dedication, visit mywmu.com/zhangdedication.

In addition to being an educational asset, the

continued on page 4

Around campus and beyond

Editor's note: Visit wmich.edu/news/events for details and more event news.

Readings to launch poetry anthology

A series of four readings across Michigan will mark the publication of a new anthology that has won high praise and features the work of 90 Michigan poets and 48 works of art by Michigan artists. The book, "Poetry in Michigan/Michigan in Poetry," is being released by WMU's New Issues Poetry and Prose.

A book launch event and reading is set for 2 p.m. Sunday, Oct. 20, at Bell's Eccentric Café, 355 E. Kalamazoo Ave. in Kalamazoo. Subsequent readings in November and December will be held in Portage, Lansing and Ann Arbor, with additional readings in the works in Traverse City and Detroit. All of the readings will feature an assortment of poets whose work is included.

Poets include Philip Levine, the former U.S. Poet Laureate; Jim Harrison, author of "Legends of the Fall"; and Thomas Lynch, whose books of essays inspired the television show "Six Feet Under." Eight WMU faculty members contributed poems for the book, including its co-editors, William Olsen from WMU and Jack Ridl, formerly from Hope College.

The handsomely assembled and illustrated book was designed by WMU's Paul Sizer. Visit wmich.edu/news/2013/10/10069 for details about the book and upcoming readings.

Light Center slates fall lectures

The Timothy Light Center for Chinese Studies has organized three lectures. They are: "Managing Hegemony in East Asia: China's Rise in Historical Perspective" by Yuan-kang Wang, sociology, 3:30 p.m. Wednesday, Oct. 23, in 2730 Sangren Hall; "Magical and Religious Seals and the Sources of Chinese Buddhism" by Paul Copp, University of Chicago, 3:45 p.m. Thursday, Nov. 7, in 2028 Brown Hall; and "Taiwan and China in a World of Globalization" by Tse-Kang Leng, Institute of Political Science of Academia Sinica and National Chengchi University, 4:30 p.m. Thursday, Nov. 21, in 2028 Brown Hall.

Dow Chemical executive to give talk

Bo Miller, global director for corporate citizenship at the Dow Chemical Co. and president and executive director of the Dow Chemical Co. Foundation, will speak on global citizenship, promoting sustainability and globally responsible citizenry at 3:30 p.m. Thursday, Oct. 24, in 2150 Schneider Hall.

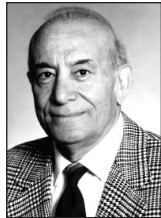
Next Frostic series presentation set

Award-winning poet and novelist Deb Olin Unferth will read from her work at 8 p.m. Friday, Oct. 25, in 157-159 Bernhard Center. Unferth wrote "Revolution: The Year I Fell in Love and Went to Join the Sandinistas," a finalist for the National Book Critics Circle Award and a New York Times Critics Choice award.

Yousef Alavi to be remembered during symposium

The late Yousef Alavi, emeritus in mathematics, will be remembered during the Department of Mathematics' 2013 Emeriti Day celebration Thursday and Friday, Oct. 24-25.

The day is traditionally marked by a colloquium and dinner honoring retired colleagues. This year, it has been expanded to a symposium



Alavi

to memorialize Alavi, who died in May and directed the International Graph Theory Conference held at WMU every four years from 1968 to 2000. Personal reminiscences of Alavi will be shared during a by-invitation-only dinner.

The symposium will focus on technical mathematics but is free and open to the public. Those interested may register at wmich.edu/math to attend both days, Thursday only or Friday only.

Talks will be held in Everett Tower's Alavi Commons Room and the Fetzer Center's Putzer Auditorium.

Exchange

For sale—Four-season Michigan cottage with Crystal Lake access. Great spot in Benzie County between Beulah and Frankfort, near Crystal Mountain Resort and Sleeping Bear Dunes. Three bedrooms, 1.5 bathrooms, fireplace, two-car garage, fenced-in yard and guest cottage. \$209,000. Contact: paula.eckert@wmich.edu.

Jobs

Current job opportunities at WMU are announced daily on the Human Resources website at wmich.edu/hr/careers-at-wmu.html. Please note that applications must be submitted online by the stated deadline. Complete application procedures are included with each posting.

Official tapped to be national vice chair

Mark Delorey, director of student financial aid and scholarships, has been asked to serve as vice chair of the Higher Education Ser-



Delorey

vices Committee of the National Association for the Education of Homeless Children and Youth.

The association connects educators, parents, advocates, researchers and service providers to ensure school enrollment, attendance and overall success for children and youth whose lives have been disrupted by the lack of safe, permanent and adequate housing.

Delorey has been honored by the association for his work on behalf of homeless students and those who have aged out of foster care. A principal in WMU's Seita Scholars program, he received the association's 2012 Distinguished Service and Leadership Award. It was the first time the award went to a higher education professional.

Accountant named to Michigan board

Donald Gribbin, chair and professor of accountancy, has been named to the 24-member Board of Directors for the Michigan



Gribbin

Association of CPAs. His three-year term began in September.

The association is the leading statewide professional organization dedicated to promoting and enhancing the value of the CPA profession. It has more than 17,000 members who meet strict statutory and regulatory requirements as CPAs and embrace the highest standards of professional and ethical performance.

Gribbin teaches courses in cost and managerial accounting. His research has been published in journals such as *Decision Sciences*, the *Journal of Management Accounting Research*, and *The Journal of Cost Analysis & Management*.

Researcher earns evaluation award

Daniela Schroeter, director of research at the Evaluation Center, is the 2013 recipient of the American Evaluation Association's



Schroeter

Marcia Guttentag Award. Schroeter will formally receive the award during an association awards luncheon Friday, Oct. 18.

The award, presented during the first five years after completion of a master's or doctoral degree, goes to a promising new evaluator whose work is consistent with the association's guiding principles.

Schroeter's primary grants and contracts work relates to program evaluations in science, technology and engineering sectors; adult learning via innovative learning environments; organizational theory; and sustainability evaluation.

Recently, she and Lori Wingate, assistant director of the Evaluation Center, were selected to provide workshops on program evaluation for the Centers for Disease Control and Prevention in Atlanta. They will offer six workshops between December 2013 and September 2014.

Western News

Volume 40 Number 4

EDITOR: Jeanne Baron. CONTRIBUTORS: Cara Barnes, Paula M. Davis, Deanne Puca, Cheryl P. Roland and Mark E. Schwerin. GRAPHIC DESIGN: Tammy M. Boneburg. DISTRIBUTION AND MAILING: Teresa Ventimiglia.

WESTERN NEWS (USPS 362-210) is published by the Office of University Relations, Walwood Hall, Western Michigan University, 1903 W. Michigan Ave., Kalamazoo, MI 49008-5433, every other week during the fall and spring semesters and Summer I session. Periodicals postage paid at Kalamazoo, MI 49008-5165.

POSTMASTER: Send address changes to *Western News*, Office of University Relations, Western Michigan University, 1903 W. Michigan Ave., Kalamazoo, MI 49008-5433.

DEADLINE: Items to be considered for publication should be submitted to the Office of University Relations by 5 p.m. Friday the week preceding publication. Fall publication dates are **Sept. 5 and 19; Oct. 3, 17 and 31; Nov. 14; and Dec. 5.** Items may be submitted to Jeanne Baron via: email, jeanne.baron@wmich.edu; mail, Campus Mail Stop 5433; phone, (269) 387-8433; or fax, (269) 387-8422.

WMU is an equal opportunity/affirmative action employer consistent with applicable state and federal laws.



Upjohn Center takes top international honor for map product

A cutting-edge WMU center has been honored for developing 2013's most outstanding map product or service in North and South America.

The W.E. Upjohn Center for the Study of Geographical Change received the award from the International Map Industry Association (Americas) during its annual conference Sept. 10 in Cambridge, Mass. The association selected the center as the winner of its gold award for Best Digital Map Product of the year as well as its Americas Award for the year's overall most outstanding map product or service.

In earning the overall award, the Upjohn Center bested public and private organizations including the National Geographic Society and U.S. Geological Survey. In addition, the center's map product was runner-up for the three-region International Map Industry Association's 2013 global award. WMU celebrated those achievements during an Oct. 11 reception in the center's offices in Welborn Hall.

The Upjohn Center was recognized for its Authoritative U.S. Topos map initiative, which includes a Topographic Maps series and a hybrid sub-series called GeoChange maps. The hyper-accurately geo-referenced maps in the two series can be used with GPS-enabled mobile devices and software based on Apple's iOS and Google's Android.

Each map is self-contained in the tablet

or smartphone, so no wireless connection is required. This means the maps can be used in wilderness areas and on large water bodies out of range of cell towers. They can also be used for navigation and location finding, because a blue dot displays the user's location on the maps and moves across the maps as the user moves.

Users can collect information in the field and attach this information as well as photos to points on the maps. The new data can then be emailed back to base or transferred by Wi-Fi, and can be used immediately with Google Earth.

The GeoChange maps series combines older USGS topographic maps with recent aerial images of the same areas, so it is easy to see where changes such as road construction, river diversions and urban sprawl have occurred.

This capability will be a boon to businesses, government agencies and researchers. But casual users will also find the capability valuable for personal uses, such as tracing family histories and recording vacation travels.

Maps cost between 99 cents and \$1.99 in the topographic series and \$2.99 in the GeoChange series. They can be downloaded with Avenza Inc.'s free PDF Maps app, which is available from Apple's App Store



Meet the map project's professional staff team, from left: Marilyn Johnson, administrative assistant; Kevin Agema and Katy Moharter, GIS technicians; Gregory Anderson and Margaret-Rose Spyker, GIS analysts; Caitlin Prior, GIS technician; and David Dickason, Upjohn Center founding director. (Photo courtesy of the Upjohn Center)

and comes with built-in tools to customize maps as well as to add and export data. Once downloaded, PDF Maps has its own map store, where individual maps from the Upjohn Center and many other vendors may be purchased.

For more information, visit wmich.edu/ucgc or contact the Upjohn Center at cgc-upjohncenter@wmich.edu or (269) 387-3364.

Nominations sought for top scholar; Breisach recognized

Nominations are due Friday, Jan. 31, 2014, for the Distinguished Faculty Scholar Award, the highest honor WMU bestows on its faculty members.

For more information, visit wmich.edu/research and click the Awards link or contact Ernst A. Breisach, emeritus in history and chair of the Distinguished Faculty Scholar Award Committee, at eabreisach@gmail.com or (269) 344-1734.

In honor of Breisach's many years of service as head of the committee, WMU President John M.

Dunn unveiled an award during the 2013 Academic Convocation that recognizes Breisach for his contributions.



Sustainability day events set

A range of free public events have been planned for WMU's Campus Sustainability Day, Tuesday and Wednesday, Oct. 22-23.

The day is being celebrated nationally Wednesday, Oct. 23, at colleges and universities across the country. WMU's events begin with the Community Sustainability Roundtable at 7 p.m. Tuesday, Oct. 22, in Schneider Hall's Brown Auditorium featuring President John M. Dunn, Kalamazoo Mayor Bobby Hopewell and others.

Additional events include an open house and project showcase in the WMU Office of Sustainability and a sustainability slam. Visit wmich.edu/sustainability for event details.

Obituary

George O. Eglund, emeritus in speech pathology, died Oct. 3. He was 104. Eglund joined the faculty in 1954 and retired in 1972 after 18 years of service.

MED SCHOOL RENOVATION ON TRACK—The School of Medicine celebrated the official topping off of its 350,000-square-foot medical school building renovation during a public event Oct. 2 at the downtown Kalamazoo site. The topping off ceremony (**bottom left photo**) marks the completion of the addition to the existing 320,000-square-foot downtown building. It is held when the last piece of steel is raised into place, adorned with an evergreen tree for good luck and other symbols important to the building's owner. Several of those in attendance, including Kalamazoo Mayor Bobby Hopewell (**bot-**



tom right photo), signed the topping off beam before it was hoisted into place. The medical school's \$68 million renovation and addition started a year ago and is scheduled for completion by June 2014. Visit [http://](http://med.wmich.edu)



med.wmich.edu for more information about the project and topping off. (Photos courtesy of the WMU School of Medicine)

Service

Editor's note: Susan B. Reeves should have been included on the March 2013 service anniversary list for 10 years of service. Her anniversary was missed due to the change in administration at the WMU Bookstore, where she was employed at the time. Reeves now works in family and consumer sciences.

The following faculty and staff members are recognized for 45, 35, 30, 25, 20, 15, 10 and five years of service during October.

45 Years—George R. Kohrman, information technology.

35 Years—Mitchell P. Beare, Bernhard Center.

30 Years—Robert R. VanDyke, Dining Services; Joycelynn P. Foo, intercollegiate athletics; Lonnie Wesseling, landscape services; and Sue Murray, multicultural affairs.

25 Years—Shirley D. Bishop, building custodial and support services; Juanita Snell,

building custodial and support services; Arnita Williams, building custodial and support services; and James A. Visser, public affairs and administration.

20 Years—Joanne L. Barretta, field placement.

15 Years—Ann M. Trevino, University Dining Services, and Catherine B. Hennessey, information technology.

10 Years—Muralidhar K. Ghantasala, mechanical and aerospace engineering.

Five Years—Brynne K. Belinger, institutional effectiveness; Diana C. Blouin, biological sciences; Shamika Hall, Sindecuse Health Center; Diana Berkshire Hearit, research; Laurel A. Kern, building custodial and support services; Eric L. Lean, Sindecuse Health Center; Nichele M. Moses, Human Resources; Lee A. Ryder, Haenicke Institute; and Erasmo J. Salinas, admissions.

On Campus with Adrienne Fraaza



DRIVING THE WELCOME WAGON
(Photo by Jeanne Baron)

Summer definitely isn't a slow time for Adrienne Fraaza, coordinator of Fall Welcome in First-Year Experience. Held over four days just before each new academic year, Fall Welcome assists first-year students with their academic and social transitions to college life.

The huge program requires months of planning and depends on numerous employee and student volunteers as well as five undergraduate students who serve as project managers for various Fall Welcome events.

"It's a lot to manage a program that has hundreds of faculty and student volunteers and almost 3,000 participants," says Fraaza, a WMU alumna. "But when things come together and you can see students getting a lot out of it, the blood, sweat and tears pay off."

Fraaza, who works out of an office in Ellsworth Hall, double majored in French and broadcast and cable productions, graduating in 2005 after studying abroad in France. While a senior, she also worked the 11 p.m. to 5 a.m. shift as an associate producer for News Channel 3 as well as served as a student co-coordinator for Bronco Days, which was the precursor to Fall Welcome. She landed her current job five months after graduating.

"This year, we incorporated new things to meet the needs of this generation of students. It's great being able to welcome students and solidify that they made the right choice and see that they're excited and ready to be a Bronco," Fraaza says. "All of us in FYE are committed to student success. We want to help students figure out who they are, and we encourage them to become who they want to be. But it's really a team effort across the board. We appreciate the campus community for collaborating with us and making Fall Welcome a positive experience for the students."

Fraaza lives in Mattawan with her husband and two children, age 3 and 5. She loves to cook, garden and read, and takes a whole-foods approach to homelife. Fraaza spends hours cooking from scratch, keeps chickens and hopes one day to expand into beekeeping. She doesn't have time to maintain her cake decorating business, but rather than relax, is pursuing a master's degree in higher education and student affairs at WMU.

IT'S DONE—Fountain Plaza by Miller Auditorium (**bottom right photo**) officially reopened Oct. 10 with a ribbon cutting. The event featured (**top right photo**), from left: WMU principals Jan Van Der Kley, Richard A. Gershon and John M. Dunn; Rex Bell, representing the Miller Davis construction company; and Ken Peregon, representing the project designer, O'Boyle, Cowell, Blalock & Associates. In addition to improving the flow of foot traffic, the redesign included installing a ramp to provide access to the lower plaza level and 364 linear feet of curved wall to provide seating. The entire area has a softer look now due to more landscaping, plus curved features built into the new hardscape. In all, 10 more trees and an additional 7,303 square feet of green space have been added to the plaza. Also, a broad expanse of concrete pavement has been replaced with decorative tiles and a 98-foot-long stone wall incorporated into the existing pool to create a waterfall feature. (Photos by Jeanne Baron)



continued from page 1

Zhang Legacy Collections Center

new center was designed to be a community resource that will be an easily accessible hub to learn about genealogical and regional history, while providing a place to discuss, hypothesize and learn collectively.

WMU was designated a repository for regional history in 1962 by the Michigan Regional Historical Commission. The collections now include court records, tax rolls, diaries, Civil War letters, newspaper archives, photographs, maps and vital records from 12 Michigan counties and beyond. Previously housed in WMU's East Hall and elsewhere, the documents and artifacts will enjoy optimal archival and climate-controlled conditions for the first time in the new center.

The center was built to Leadership in Energy and Environmental Design—LEED—silver certification standards and features numerous other "green" attributes, such as a geothermal heating and cooling system.

The center is named for major donors Charles and Lynn Zhang, who both earned graduate degrees from WMU and who run a Kalamazoo financial planning and investment firm. Additional donors for the more than \$8 million project include the Irving S. Gilmore Foundation, Kalamazoo Community Foundation, Frederick J. and Katharine D. Rogers and many others.

The Zhangs are supporters of many University programs, including the Haworth College of Business, the Department of Economics and the Academically Talented Youth Program in the Lee Honors College. Lynn Zhang also serves as a member of the WMU Foundation Board of Directors.

continued from page 1

Board OKs \$1 million for alumni center

at the Oct. 11 meeting, was to devote \$1 million from the association's funds to the renovation effort.

The association's funds are derived from historical member dues, gifts and other revenues. One of the principal uses for the funds is to enable the association to award a series of annual Legacy Scholarships to students who are the children or grandchildren of WMU alumni.

This year, for instance, the association offered 100 such students \$1,000 each in

scholarship assistance, an increase of 30 scholarships over last year's number.

Preliminary design work on the core of East Hall is underway, and the first of a series of community input sessions was held Oct. 1. At that event, design ideas and parameters were presented by TowerPinkster, the design firm leading the effort.

Material from that session, other details of the project and information about making a donation to the effort are available online at mywmu.com/alumnicenter.