



Assessment Fellows Grant

Assessment

3-19-2007

Developing Social Work's Self-efficacy Model of Student Assessment

Yvonne Unrau

Western Michigan University, yvonne.unrau@wmich.edu

Melinda McCormick

Western Michigan University, melinda.m.mccormick@wmich.edu

Follow this and additional works at: https://scholarworks.wmich.edu/assessment_faculty_grant



Part of the Clinical and Medical Social Work Commons, and the Educational Assessment, Evaluation, and Research Commons

WMU ScholarWorks Citation

Unrau, Yvonne and McCormick, Melinda, "Developing Social Work's Self-efficacy Model of Student Assessment" (2007). *Assessment Fellows Grant*. 14.

https://scholarworks.wmich.edu/assessment_faculty_grant/14

This Presentation is brought to you for free and open access by the Assessment at ScholarWorks at WMU. It has been accepted for inclusion in Assessment Fellows Grant by an authorized administrator of ScholarWorks at WMU. For more information, please contact wmu-scholarworks@wmich.edu.



Developing Social Work's Self-efficacy Model of Student Assessment

Faculty Assessment Grant Presentation – March 19, 2007

**School of Social Work
Western Michigan University**

Yvonne Unrau, PhD

Melinda McCormick, MSW

Goals of Our Grant

1. **Formative Evaluation**
 - Feedback on outcome questionnaires
 - Field Instructors
 - Students
 - Faculty
2. **Web-based Materials**
 - Assessment Manual - iwebfolio
 - Web-based Instruments
3. **Testing Reliability of Assessment Instruments**
 - To be carried out March/April 2007

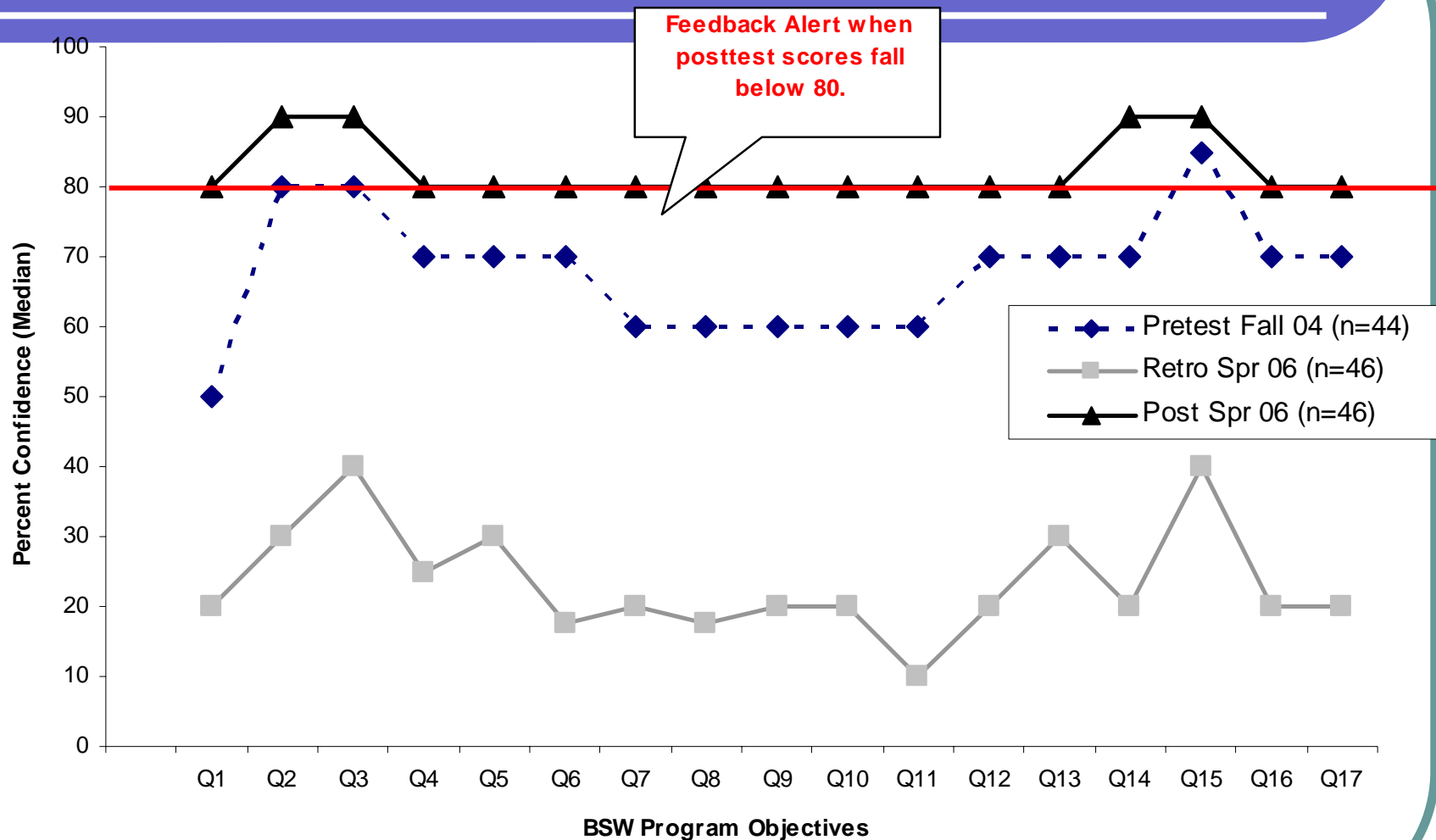
Measuring Outcomes

- BSW Program
 - Foundation or “Core” Objectives
- MSW Program
 - Interpersonal Practice Objectives
 - Policy Planning and Administration Objectives
- Alumni Survey

Assessment Schedule

- Students
 - Pretest (Orientation)
 - Posttest (Semester before Graduation)
- Field Instructors
 - Posttest (Semester before Graduation)
- Alumni
 - 1 year post graduation
 - 5 years post graduation

BSW Student Outcomes



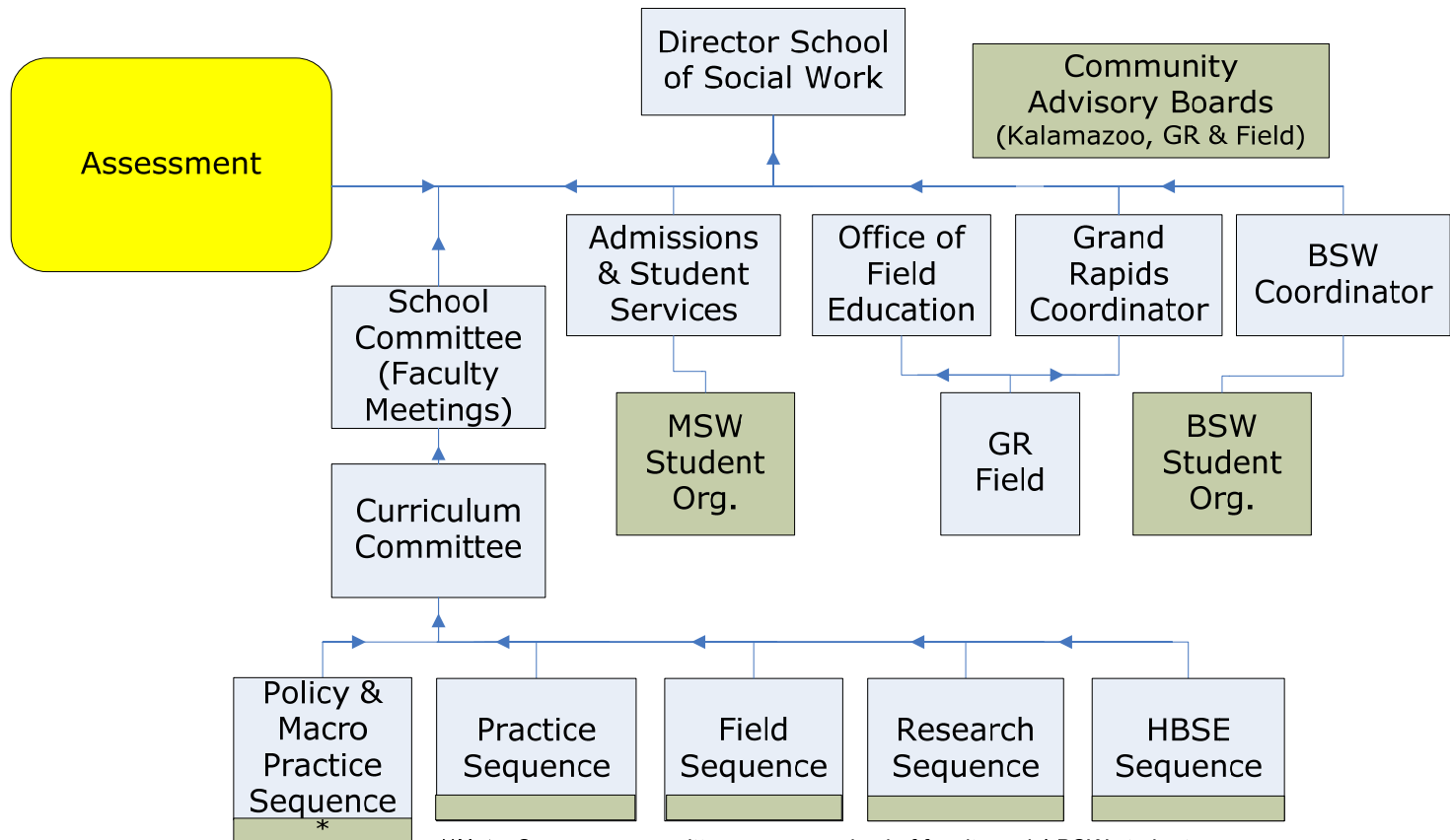
Alumni Outcomes

	BSW (n=30)	IP MSW (n=50)	PP&A MSW (n=12)	Total (N=92)	Notes of Significance
In general, how well did your SW degree prepare you to... (0% prepared to 100% prepared) – Median is Reported					❖ On average, alumni report 80% or better preparation for most areas of social work practice.
1. Apply critical thinking skills to practice decisions.....	80	80	85	80	
2. Practice within the profession's <i>Code of Ethics</i>	90	90	90	90	
3. Act on issues of discrimination and social injustice....	80	80	90	80	
4. Assess client need in context of client environments...	80	90	80	80	
5. Work for change in social or organizational policy.....					❖ <i>Feedback Alert to Curriculum Committee, Policy & Macro Practice, Practice, and Research Sequence Committees. Bold* numbers highlight average scores falling below 80. Also, 2005 IP Alumni were 10 points (on average) less well prepared compared to 2001 IP Alumni.. Committees should consider these data along with the Student Outcome Assessment Report 2005-06</i>
	2001 Alumni	80	80	80	
	2005 Alumni	75*	70*	75*	
6. Use professional literature to inform your practice.....	80	80	80	80	
7. Evaluate the effectiveness of your own practice.....	80	75*	75*	80	
8. Evaluate the effectiveness of service programs	80	70*	80	90	
9. Be a culturally competent practitioner.....	90	90	90	90	
10. Actively pursue professional development.....	85	80	90	80	
11. Work effectively with other professionals	90	90	90	90	
12. Work in the organizational structure of an agency.....	90	82.5	90	90	
13. Work with many client systems (e.g., individuals, families, groups, organizations, and communities).....	85	90	90	90	

Assessment Feedback Log

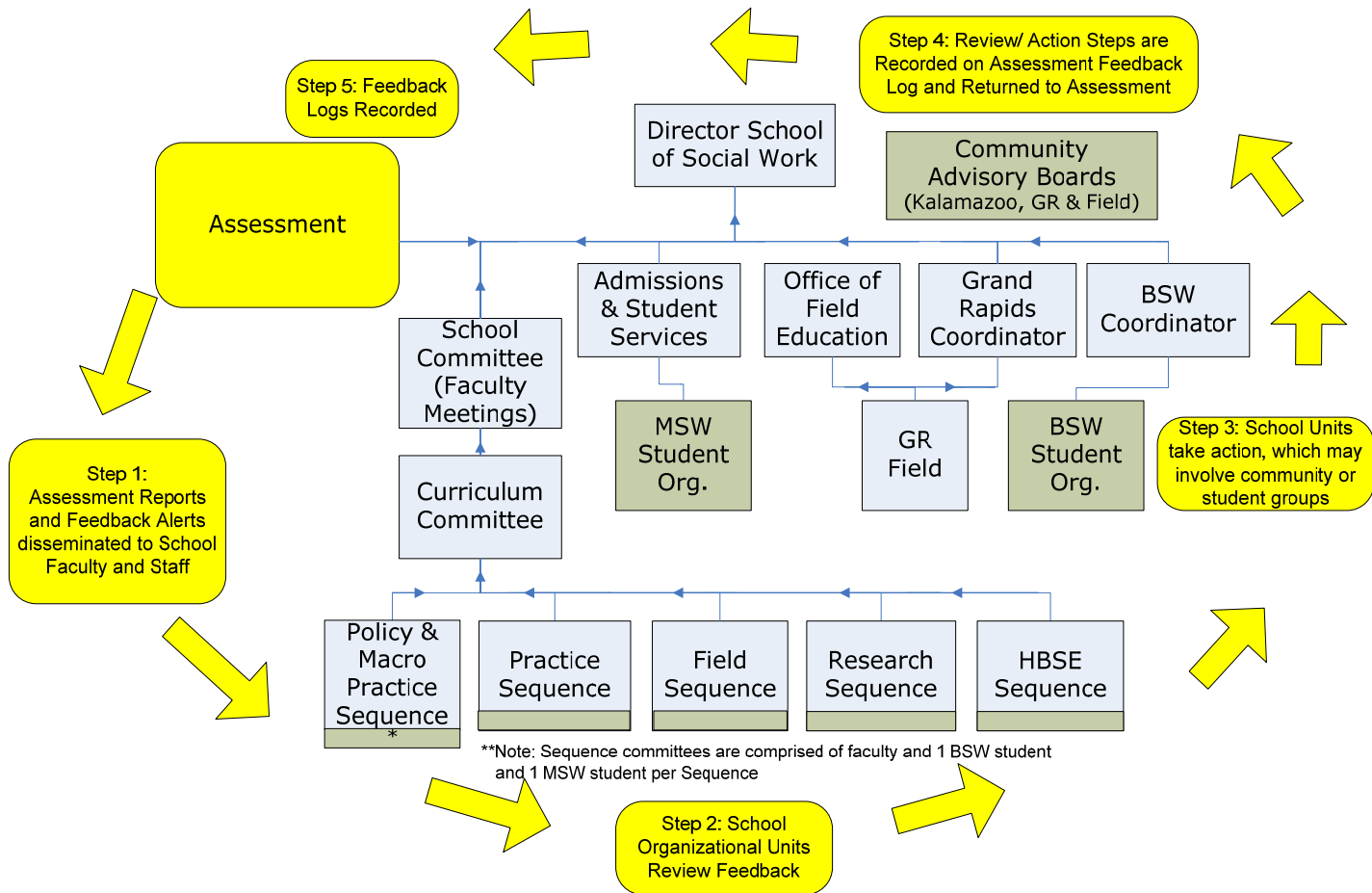
Year of Student Assessment Data:	2005-06
Portion of Report reviewed:	Complete 2005-06 report
Date of Review:	January 8, 2007
Reviewed at:	Faculty Meeting
Notable Items of Discussion (no action): <ul style="list-style-type: none">• Format for reporting assessment outcomes (e.g., graphs) were presented to the faculty.• Student Outcome Assessment Feedback Log presented to faculty• Some discussion about why present outcomes separately for GR from Kalamazoo	
Decision or action items (record who is responsible for carrying out the decision/action item as well as date of expected completion): <ul style="list-style-type: none">• Curriculum Committee to “approve” format for reporting assessment outcomes (e.g., graphs) “as is” or suggest changes.• Student Outcome Assessment Feedback Log to be implemented (this being the first record).• Outcome assessment reports to be reviewed by School’s Administration and Curriculum Committee (including appropriate sequence committees)	
Name of Person completing this form:	Unrau

Curriculum Development



**Note: Sequence committees are comprised of faculty and 1 BSW student and 1 MSW student per Sequence

Assessment Feedback Loop



Changes Made as a Result of Grant

- Assessment Feedback Loop
- Updated instruments
- Revised instrument items and presentation to increase clarity
- Assessment reported monthly at faculty meetings
- Web-based instruments
- School of Social Work Assessment Manual
 - iwebfolio demonstration

Web-based Materials

- Assessment Manual
 - iwebfolio demonstration
- Web-based Instruments