



1978

## 2-An Archaeological Survey of Allegan County, Michigan: 1977 Transect Survey in the Lower Kalamazoo River Valley

William M. Cremin  
*Western Michigan University*

R. David Hoxie

Donald E. Weston

Follow this and additional works at: [https://scholarworks.wmich.edu/archaeological\\_reports](https://scholarworks.wmich.edu/archaeological_reports)



Part of the Archaeological Anthropology Commons

Report Number: 2

---

### WMU ScholarWorks Citation

Cremin, William M.; Hoxie, R. David; and Weston, Donald E., "2-An Archaeological Survey of Allegan County, Michigan: 1977 Transect Survey in the Lower Kalamazoo River Valley" (1978). *Archaeological Reports*. 18.

[https://scholarworks.wmich.edu/archaeological\\_reports/18](https://scholarworks.wmich.edu/archaeological_reports/18)

This Report is brought to you for free and open access by the Intercultural and Anthropological Studies at ScholarWorks at WMU. It has been accepted for inclusion in Archaeological Reports by an authorized administrator of ScholarWorks at WMU. For more information, please contact [wmu-scholarworks@wmich.edu](mailto:wmu-scholarworks@wmich.edu).



DEPARTMENT OF ANTHROPOLOGY  
WESTERN MICHIGAN UNIVERSITY

ARCHAEOLOGICAL REPORT NO. 2  
1978

AN ARCHAEOLOGICAL SURVEY OF ALLEGAN COUNTY, MICHIGAN:  
1977 TRANSECT SURVEY IN THE LOWER KALAMAZOO RIVER VALLEY

WILLIAM M. CREMIN

R. DAVID HOXIE

DONALD E. WESTON

DEPARTMENT OF ANTHROPOLOGY  
WESTERN MICHIGAN UNIVERSITY

ARCHAEOLOGICAL REPORT NO. 2  
1978

AN ARCHAEOLOGICAL SURVEY OF ALLEGAN COUNTY, MICHIGAN:  
1977 TRANSECT SURVEY IN THE LOWER KALAMAZOO RIVER VALLEY

WILLIAM M. CREMIN

R. DAVID HOXIE

DONALD E. WESTON

## Acknowledgements

This project has been funded through a grant from the United States Department of Interior, National Park Service, under the provisions of the National Historic Preservation Act of 1966, through the Michigan History Division, Michigan Department of State.

## Contents

	Page
Section 1: Prehistoric Site Survey in the Kalamazoo River Basin .....	1
Section 2: The 1977 Project Area .....	4
Section 3: Previous Archaeological Research in the Project Area .....	6
Section 4: Site Survey Methodology .....	8
a. Research Design .....	8
b. Field Procedures .....	12
c. Laboratory Procedures .....	15
Section 5: Description of Sites Recorded .....	19
Section 6: Tentative Interpretations and Conclusions .....	26
Section 7: Recommendations for Future Resource Development and Management .....	30
References Cited .....	31
Appendix I: Catalog of Surface Collections from 62 Sites .....	32

## Tables

	Page
Table 1: Survey Coverage of Transect by Stratum and Random	
Sampling Unit .....	16

## Figures

	Page
Figure 1: 1976 Sampling Universe .....	3
Figure 2: 1977 Sampling Universe .....	5
Figure 3: Previously Known Archaeological Sites in the 1977 Sampling Universe .....	7
Figure 4: Stratification of the 1977 Sampling Universe by Soils and Stream Rank Order .....	10
Figure 5: Sampling Units ( $\frac{1}{4}$ Sections) Surveyed in the 1977 Transect .....	13
Figure 6: Archaeological Sites Recorded in the 1977 Sampling Universe .....	14

# 1. Prehistoric Site Survey in the Kalamazoo River Basin

Western Michigan University has sponsored archaeological field work in the Kalamazoo River Valley for the last 10 years. For the most part this research has been carried out by the Department of Anthropology's archaeological field school, which has been located in the lower valley during all or portions of 6 field seasons: 1968, 1969, 1973, 1976, 1977 and 1978. Prior to 1976, the Department's field program was directed by Elizabeth Baldwin Garland; and since that time by Garland and William Cremin.

With the inception of the Kalamazoo Basin Archaeological Project in 1976, the research objectives of our program in this universe have necessitated that we initiate systematic site survey as a means of acquiring data which could be used to delineate and explain prehistoric land use patterns. To collect these data, the first in a series of cross-valley transect surveys was conducted in the Hacklander site environs as part of the 1976 field school (Figure 1). On this occasion the survey was supported entirely out of the field school budget. Since then our survey program has been funded by National Register grants obtained through the Michigan History Division, Michigan Department of State.

External funding for site survey in the Kalamazoo Basin has meant that we could employ full-time personnel to oversee the daily operations of the survey. And, moreover, that areas selected for investigation could be somewhat removed from the actual location of the field school. However, site survey has remained an integral part of our total field program, with students enrolled in the archaeological field school periodically departing the site being excavated on a rotational basis to participate in the survey under the



direct supervision of permanent personnel. This approach to conducting site survey has made it possible to investigate larger tracts of land than would otherwise have been possible, maintain a rigorous and systematic research design regardless of the composition of the survey team on any given day, and enable us to provide student archaeologists with essential supervised training and experience in site survey methodology.

In addition to our current tact of integrating the field school and survey programs, Garland has for a number of years worked with members of the Kalamazoo Valley Chapter of the Michigan Archaeological Society to conduct informal site survey in this drainage system. Sites recovered in this manner, together with additional information collected through landowner survey in 1973 as part of a larger project undertaken to assess both the natural and cultural resources of the area, have recently been summarized by her (see Baldwin 1976). To the 225 sites reported by Garland for the greater Kalamazoo Basin can now be added the 24 sites found in 1976 and 62 sites recorded in 1977 (and described herein) during transect surveys carried out in the lower valley under Cremin's direction. And, at the time of this writing, 4 survey teams currently working in Allegan County have reported an additional 226 sites, bringing the total number recorded to date in the Kalamazoo Valley to 537 prehistoric sites.

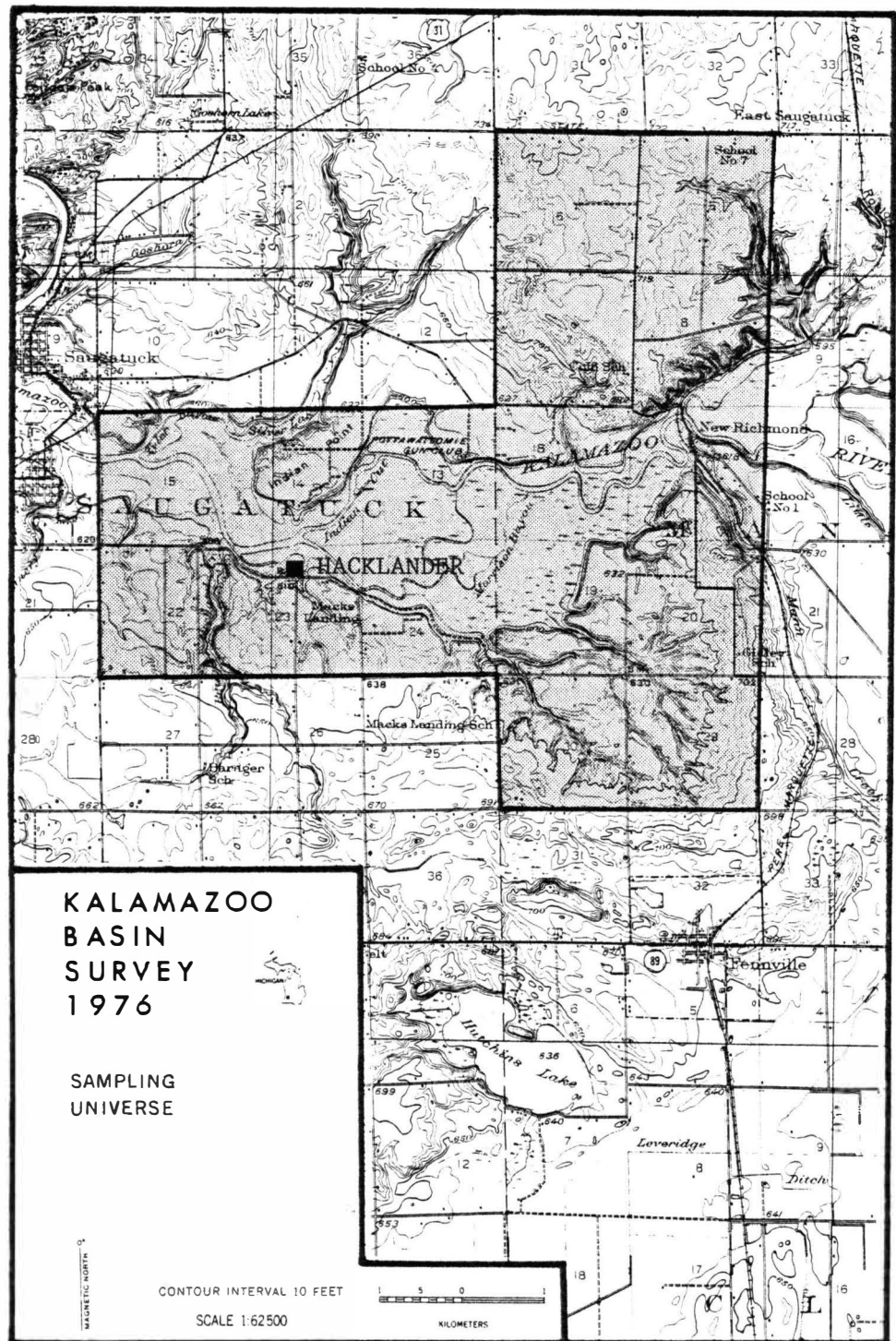


Figure 1

## 2. The 1977 Project Area

The 1977 transect commences at a point 22.5 km above the mouth of the Kalamazoo River and 9 km upstream from the 1976 survey universe. It is located in an area of nearly level to gently rolling and, occasionally, steep topography, reflecting past glacial and more recent fluvial activity. The northern portion of the transect is today heavily farmed, with only scattered woodlots consisting mainly of deciduous species. In the central and southern portions, much of which is included in the Allegan State Game Area, conifers often predominate, with mixed hardwoods confined to shoreline habitats or forming small isolated stands intermingled with pines. The valley bottoms throughout this area are largely inaccessible due to the lack of floodplain development and presence of wetland vegetation. Marshes and swamps occupy extensive areas on valley floors along the course of the Kalamazoo River and its tributaries.

The area designated for intensive, systematic pedestrian survey constitutes 93 km<sup>2</sup>, or the equivalent of one township. Its boundaries are purposefully irregular, reflecting our desire to include within the transect an area providing as much ecological diversity as possible, as well as a portion of the Rabbit River drainage on the north (Figure 2). Commencing at a point 3 km south of the dam at the west end of Lake Allegan, the transect extends in a northerly direction to a point 4 km north of the community of Hamilton on the Rabbit River, providing an overall length of about 19 km. East-west dimensions vary from less than 2 km to more than 8 km, with the average width of the transect being almost 5 km. Within this universe, inaccessible stream bottoms constitute 11 km<sup>2</sup> and the area potentially available for walk-over survey totals 82 km<sup>2</sup>.

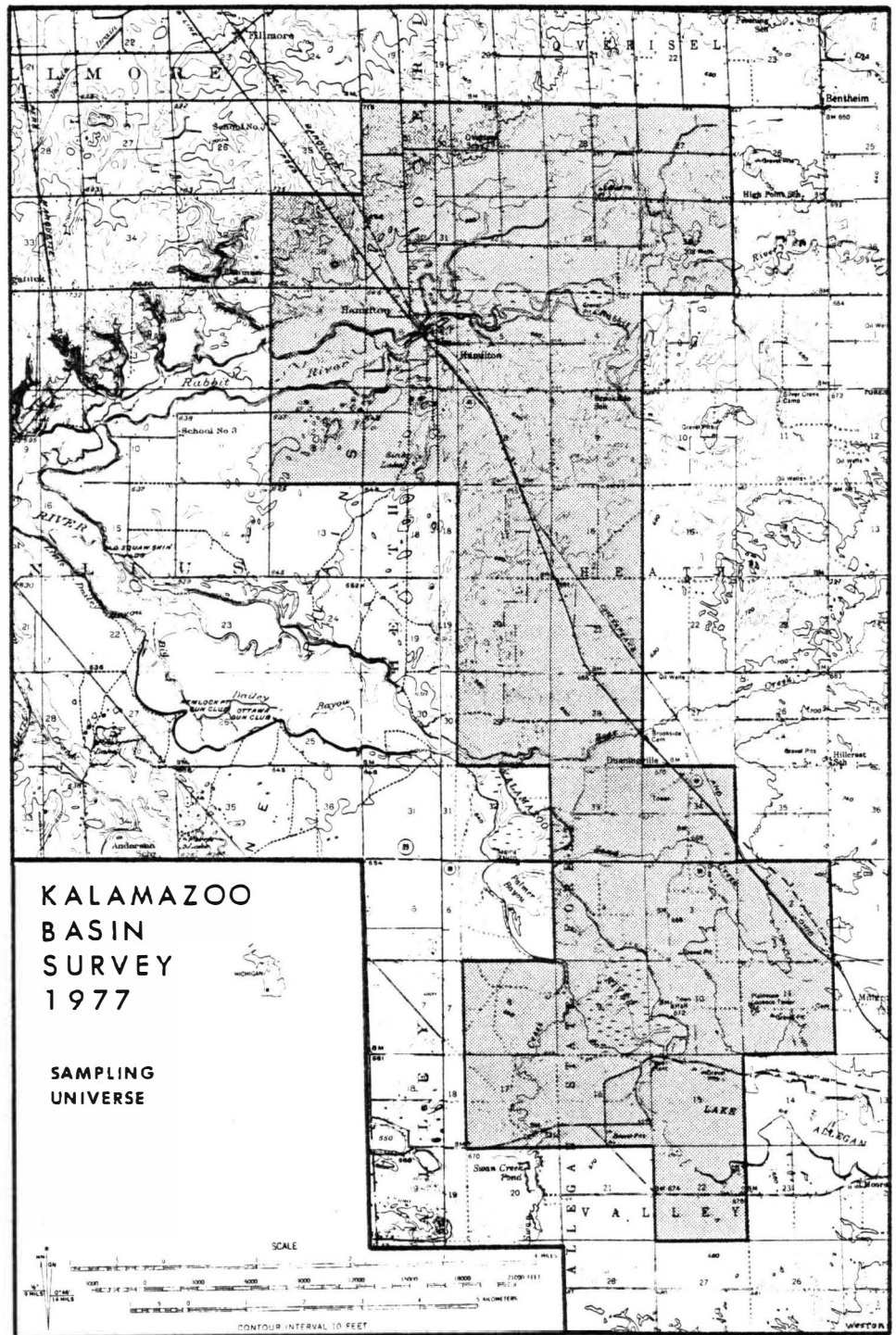


Figure 2

### 3. Previous Archaeological Research in the Project Area

Little prior field work has been undertaken in the project area. A search of the literature and site files in the Department of Anthropology revealed only 7 sites recorded for the transect, with an additional 6 sites located nearby (Figure 3). Of these 13 sites, only Allegan Dam (20 AE 56) had been previously tested. Exploratory excavations were carried out on the site by Garland in 1968. In 1977, the field school undertook additional testing as a means of confirming her impressions regarding the late prehistoric occupation of the site (Cremin 1977). The data recovered on these occasions are currently being studied by George Spero for inclusion in his M.A. Thesis.

Whenever possible, the survey team revisited sites known to exist within the project limits. For these, surveyors have reported no change in status, and WMU is not now contemplating any additional work at the sites.

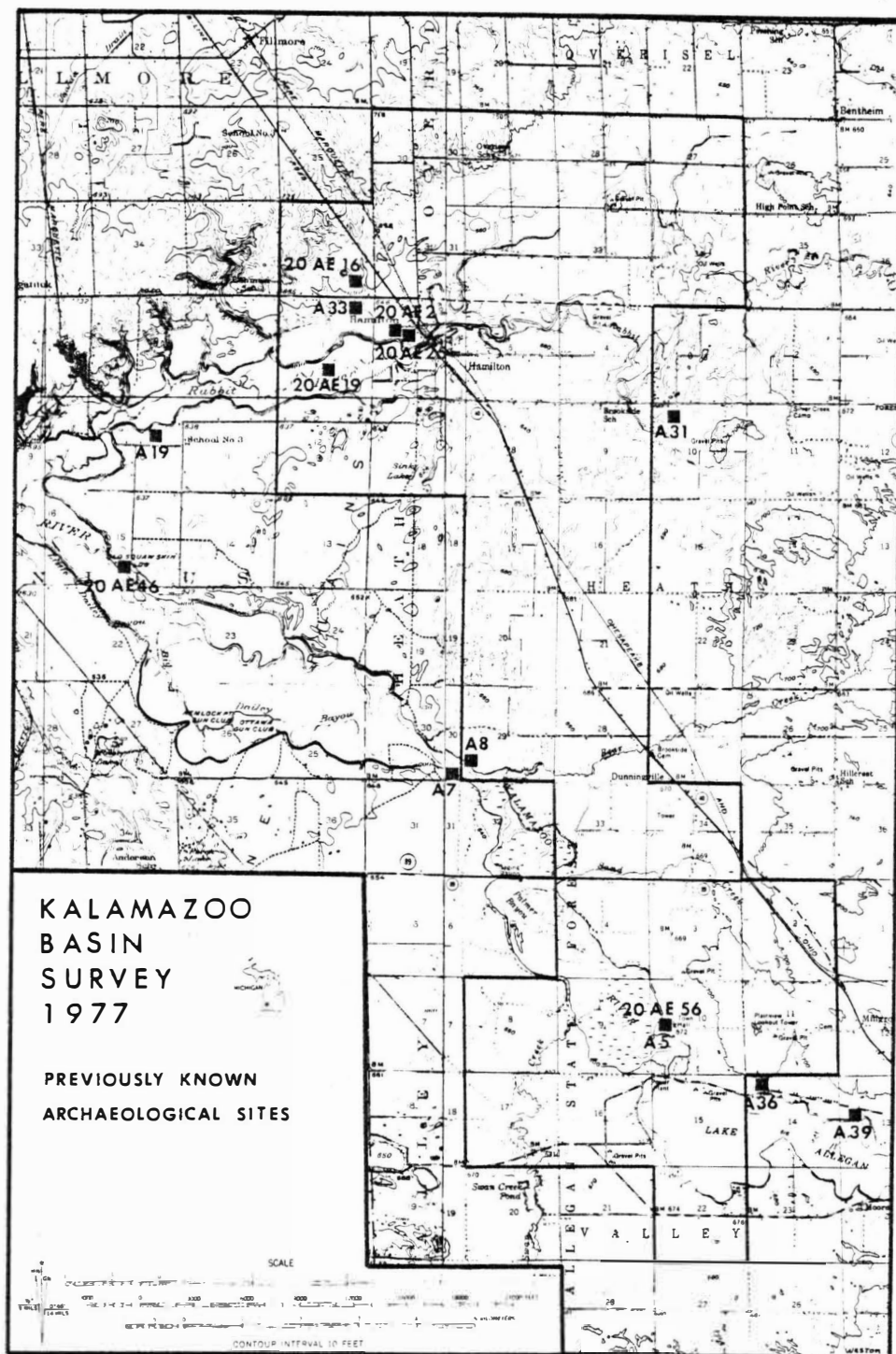


Figure 3

#### 4. Site Survey Methodology

##### a. Research Design

To facilitate systematic investigation of this universe in the 6 weeks allotted, the 93 km<sup>2</sup> transect was stratified according to the distribution of soils plotted on a recent map of the basin prepared by the USDA-Soil Conservation Service (1974) and, secondarily, by rank ordering of streams. Soils within the project area are assigned to 3 associations:

##### Blount-Morley (1)

These are medium textured soils that lie on nearly level to gently sloping topography. They are developed in predominantly clay, clay loam and silty clay glacial till. The internal drainage of these soils ranges from well-drained to poorly drained, but they all have low permeability rates. Native vegetation consists principally of mixed hardwoods and oaks, with the potential productivity being low to medium for Blount and very high for Morley soils. This association is confined to the northern portion of the transect and constitutes 11.7 km<sup>2</sup> (12.6%) of the study area.

##### Oakville-Spinks-Oshtemo (3)

These coarse textured soils are widely distributed in the project area on nearly level to steep topography. They are developed in sand, sandy loam, stratified sand and loamy sand and stratified sand and gravel, occurring principally on old lake plains, outwash plains and moraines. They are well-drained soils with high permeability rates. Conifers, mixed hardwoods and oaks comprised the arboreal vegetation on these soils at the time of the original land surveys in 1831 and 1832. The former are now the most prevalent species. Woodland suitability information for these soils indicates only that the potential productivity for mixed hardwoods and oaks ranges from

low to medium. This association constitutes 59.4 km<sup>2</sup> (63.9%) of the transect.

Miami-Hillsdale (12)

Soils comprising this association are medium to coarse in texture and are found on rolling to steep topography. They are developed in glacial drift and till, ranging from sandy loam, loam and silt loam, to sandy clay loam. They are well-drained with medium permeability rates. These soils are favorable to the growth of mixed hardwoods and oaks, with the potential productivity being high to very high for hardwoods and high for oaks. Miami and Hillsdale soils constitute the remaining 21.9 km<sup>2</sup> (23.5%) of the project area.

Having delimited the distribution for all soil associations found within the transect, each was then subdivided further on the basis of whether or not permanent streams occurred and, if present, their rank order relative to one another. For those portions of a given association lacking permanent streams, the number of the soil association has been given to the sampling stratum. Areas of a soil association adjacent to streams are assigned 2 numbers; the first number reflecting the soil association and the second indicating the rank order of the proximal stream. For example, areas of soil association 3 (i.e. Oakville-Spinks-Oshtemo) bordering on the Kalamazoo River (a rank order 1 stream) are assigned to sampling stratum 3-1. For areas of soil association 3 bordering the Rabbit River (rank order 2), the assigned designation is stratum 3-2.

In aggregate, 6 sampling strata are recognized on the basis of the above criteria (Figure 4). These are (together with the proportion of the project area occupied by each):



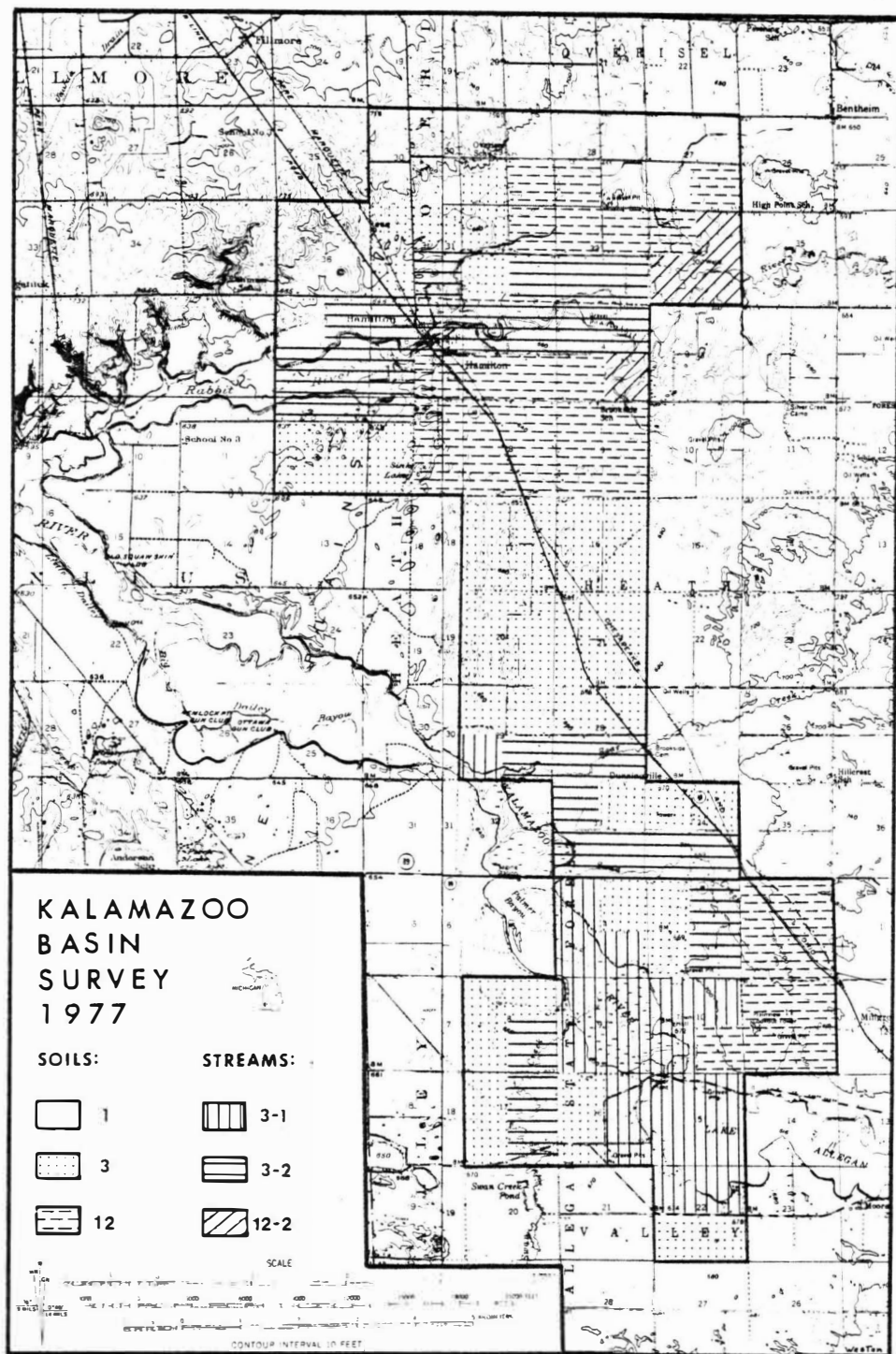


Figure 4

- Stratum 1: This stratum consists of areas of Blount-Morley soils which do not occur in close proximity to any permanent stream. It constitutes  $11.7 \text{ km}^2$  (12.6%) of the project area.
- Stratum 3: Areas of Oakville-Spinks-Oshtemo soils which are not adjacent to any permanent streams. This stratum comprises  $29.8 \text{ km}^2$  (32.0%) of the transect.
- Stratum 3-1: Areas of Oakville-Spinks-Oshtemo soils bordering on the Kalamazoo River. This stratum constitutes  $12.3 \text{ km}^2$  (13.2%) of the area under study.
- Stratum 3-2: Same soil association as above, but with areas adjacent to tributaries of the Kalamazoo (e.g. Rabbit River, Swan Creek). It aggregates  $17.5 \text{ km}^2$  (18.7%) of the transect.
- Stratum 12: This stratum consists of areas of Miami-Hillsdale soils which are not located adjacent to any permanent streams. It constitutes  $19.3 \text{ km}^2$  (20.8%) of the project area.
- Stratum 12-2: This is the smallest sampling unit in the research area, aggregating a mere  $2.4 \text{ km}^2$  (2.7%) of the transect. This stratum is composed of Miami-Hillsdale soils found east of Hamilton and adjacent to the Rabbit River.

Following Lovis (1976), the quarter-section (64.75 ha) was established as the unit by which the 6 strata would be sampled. First, a 40% simple random sample of all such units occurring within each stratum was generated. Of 144 quarter sections comprising the transect, 127 were judged to be at

least potentially accessible. Fifty-eight (45.7%) of these were then targeted for investigation by the 5-person survey team. In 22 field days the survey party visited 53 (91.3%) of the targeted units (Figure 5). Of almost 38 km<sup>2</sup> included within the 58 quarter-section sample, more than 14 km<sup>2</sup> (38%) were intensively surveyed, with coverage by stratum ranging between 31.9% and 44.6%, or 39.8% on the average. Table 1 summarizes surveyor coverage by stratum and random sampling unit. For our efforts we have realized an addition of 62 new sites to the list of 13 previously recorded for the transect and adjacent areas (Figure 6).

b. Field Procedures

The 5-person survey team systematically walked all accessible areas in the following manner. In situations where the modern land use pattern reflected predominantly agricultural activities and large fields were available for investigation, the team formed a line at one end of the area designated for survey with the individuals spaced at 25 m intervals. They then moved through the field following the furrows in a zig-zag fashion. Each person was instructed to first walk 10 paces at a 45° angle to the line of movement and then back 90°, or at an angle of 45° to the line of movement for 20 paces, but in the opposite direction. This movement of the team was maintained until everyone reached the far end of the field. After walking the length of the field in one direction, the team then shifted 25 m beyond the individual at the end of the line and repeated this pattern of movement, but in the opposite direction. The entire parcel of land was walked-over in this manner.

In restricted areas characterized by sand blow-outs and high banks

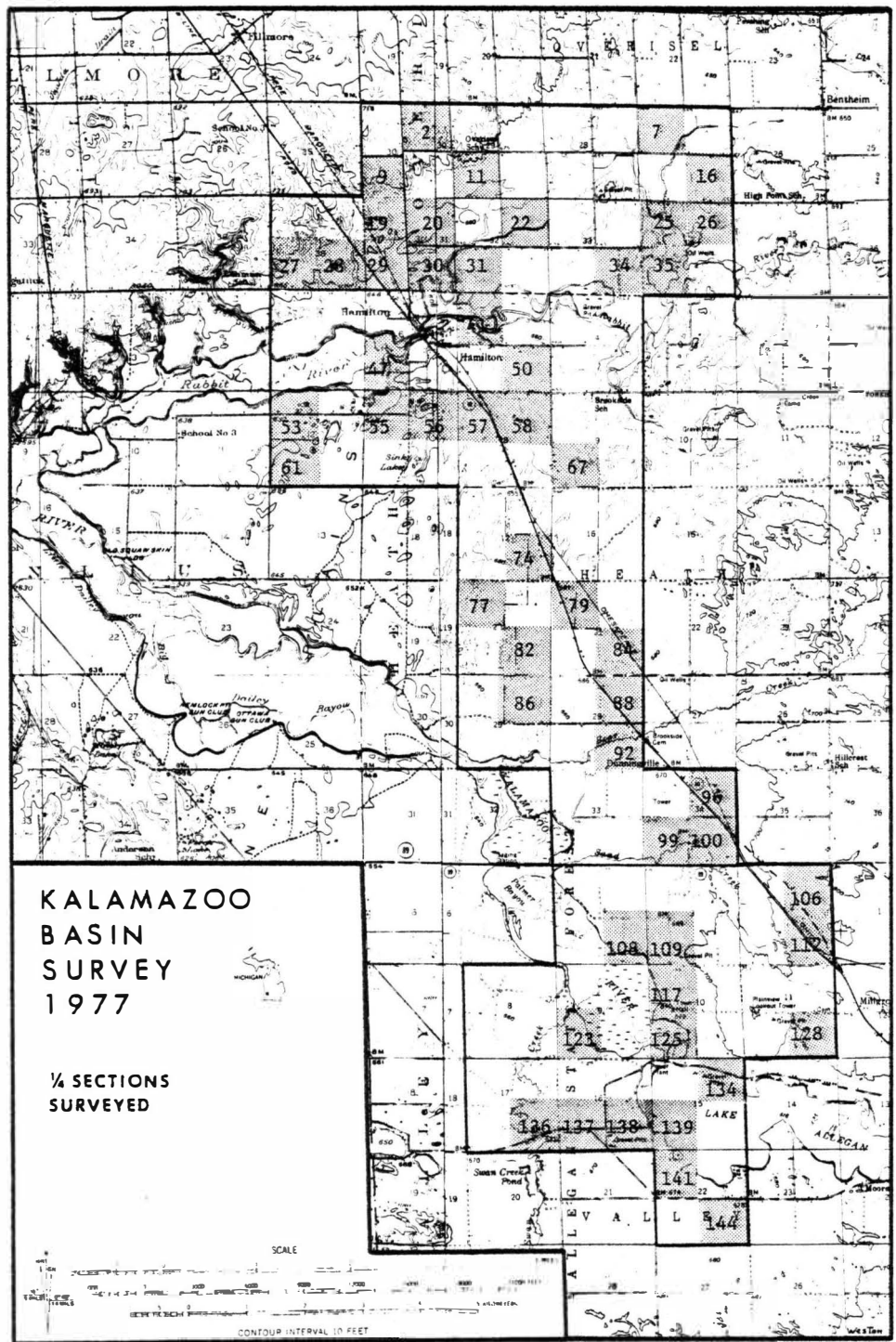


Figure 5

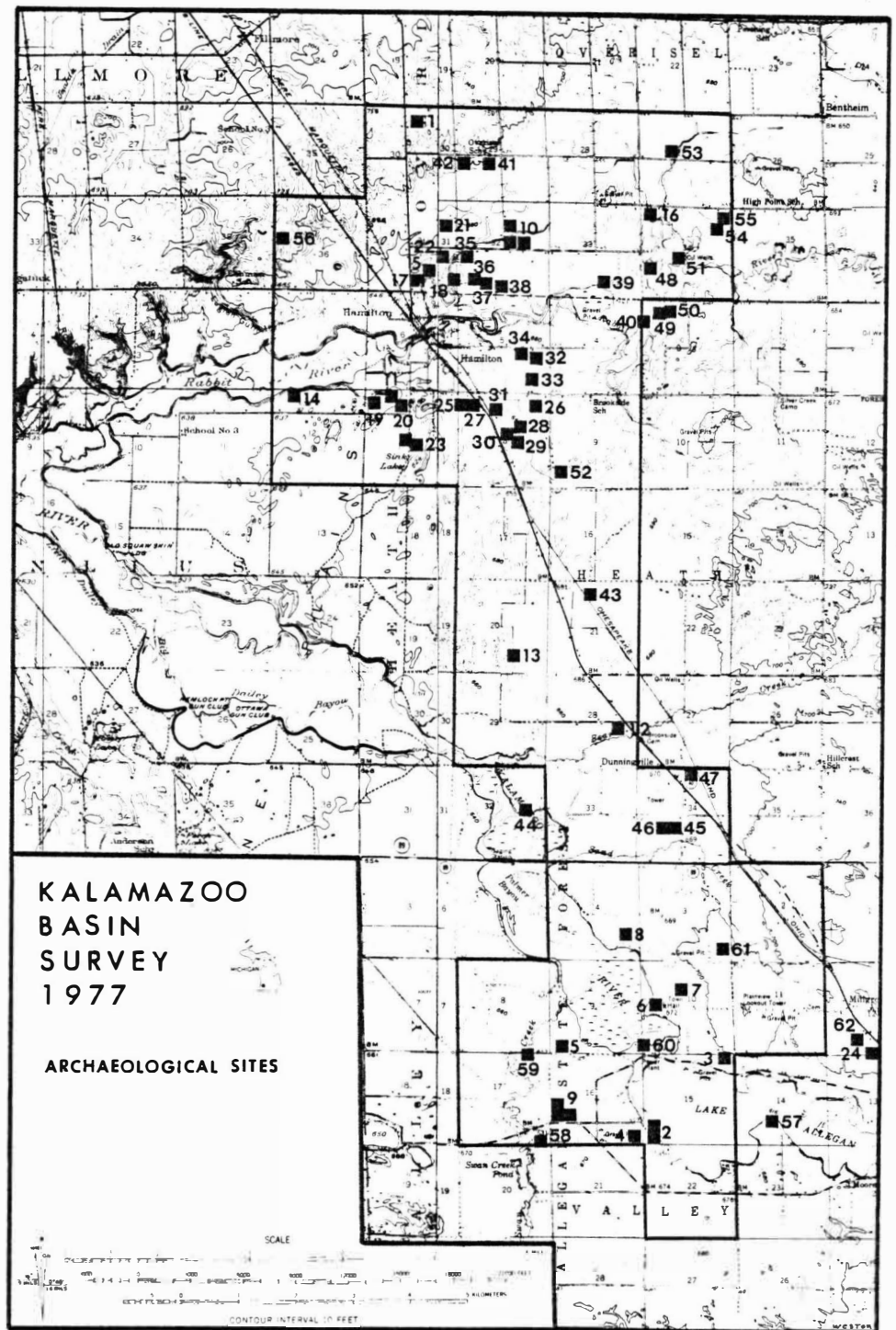


Figure 6

or ridges, the survey team scattered over the feature in order to evaluate visible areas. Here, systematic movement was not possible. In the event that an individual observed cultural scatter in a given locale, the team assembled in order to delineate the extent of the scatter and recover diagnostic material.

Following completion of each quarter-section, the team discussed salient aspects of their work and entries were made in the daily log. Such comments typically referenced the local topography and vegetation, sites observed, the nature of surface indicators of human activity and any problems which had arisen regarding surveyor coverage of the sampling unit. Information about ground visibility and the number of hectares covered in each unit was also noted. If a site(s) had been defined, a specially prepared form was filled out and a descriptive paragraph entered into the log along with other comments germane to the team's work in the quarter-section. Informant sites were revisited whenever possible and private collections were examined and photographed.

#### c. Laboratory Procedures

Briefly, all artifactual materials collected during the survey were examined, cleaned and accessioned into the archaeological collections at WMU. Catalogue forms were prepared for each site, inventorying the contents of surface collection bags. Relevant data about each site were then entered on forms provided by the University of Michigan, and at this time local site numbers were changed to reflect the numbering system used by the State. Following completion of the appropriate forms, the catalogued materials were placed in the collections for future reference and study.

Table 1: Survey Coverage of Transect by Stratum and  
Random Sampling Unit ( $\frac{1}{4}$  Section or 64.75 ha)

Stratum 1:	N= 18 (7 targeted)	Objective-453.25 ha
<u>RS#</u>	<u>Coverage</u>	
2	44.5	
9	46.5	
28	34.4	
7	20.2	
<u>27</u>	<u>56.7</u>	
5	202.3 ha	Achieved-44.6%
<hr/>		
Stratum 3:	N= 46 (18 targeted)	Objective-1165.50 ha
<u>RS#</u>	<u>Coverage</u>	
19	16.2	
84	6.1	
31	60.7	
11	52.6	
82	16.2	
137	24.3	
109	10.1	
86	20.2	
88	24.3	
96	24.3	
61	16.2	
79	8.1	
74	12.1	
77	4.0	
29	36.4	
144	8.1	
<u>20</u>	<u>32.4</u>	
17	372.3 ha	Achieved-31.9%
<hr/>		
Stratum 3-1:	N=19 (8 targeted)	Objective-518.00 ha
<u>RS#</u>	<u>Coverage</u>	
108	44.5	
117	50.6	
138	50.6	
134	28.3	
141	24.3	
123	8.1	
125	0.8	
<u>139</u>	<u>16.2</u>	
8	223.4 ha	Achieved-43.1%

Table 1, continued

Stratum 3-2: N= 27 (11 targeted) Objective-712.25 ha

<u>RS#</u>	<u>Coverage</u>	
53	16.2	
92	32.4	
47	10.1	
34	48.6	
136	16.2	
41	30.4	
55	24.3	
99	24.3	
100	16.2	
<u>30</u>	<u>60.7</u>	
10	279.4 ha	Achieved-39.2%

Stratum 12: N= 30 (12 targeted) Objective-777.00 ha

<u>RS#</u>	<u>Coverage</u>	
58	36.4	
67	40.5	
112	16.2	
22	36.4	
57	16.2	
50	64.8	
128	48.6	
16	16.2	
106	16.2	
56	2.0	
<u>25</u>	<u>0.8</u>	
11	294.3 ha	Achieved-37.9%

Stratum 12-2: N= 4 (2 targeted) Objective-129.50 ha

<u>RS#</u>	<u>Coverage</u>	
26	24.3	
<u>35</u>	<u>30.4</u>	
2	54.7 ha	Achieved-42.2%



Table 1, continued

Totals:

Sampling Universe	144 quarter sections (127 units accessible)
Targeted Units	58 quarter sections (3755.50 ha)
Surveyed Units	53 quarter sections, with coverage of 1426.40 ha (38%)

Summary by Stratum

Stratum 1:	5 quarter sections / 202.3 ha (44.6%)
Stratum 3:	17 quarter sections / 372.3 ha (31.9%)
Stratum 3-1:	8 quarter sections / 223.4 ha (43.1%)
Stratum 3-2:	10 quarter sections / 279.4 ha (39.2%)
Stratum 12:	11 quarter sections / 294.3 ha (37.9%)
Stratum 12-2:	2 quarter sections / 54.7 ha (42.2%)

Average coverage for 6 sampling strata= 39.8% of accessible land in sample from each stratum.

## 5. Description of Sites Recorded

With respect to the following brief site descriptions, an assessment is made concerning each site's relative significance. That is, a "low, moderate, or high priority" designation is assigned to each site regarding its potential interpretive value to Western Michigan University's current research goals which are: 1) building a cultural chronology and 2) delineating prehistoric man-land relationships in the Kalamazoo River Valley.

- KBS-77-1  
20 AE 137      Beltman. Small campsite in the NW $\frac{1}{4}$  of the NE $\frac{1}{4}$  of Section 30, Overisel Township, T4N R14W, Allegan County, Michigan. Light surface scatter over an area 15 m<sup>2</sup> on a small peninsula of land extending into a former small swamp land. Low priority.
- KBS-77-2  
20 AE 138      Neandercutt Pointe. Campsite in the SW $\frac{1}{4}$ , Sec. 15, and N $\frac{1}{2}$ , NW $\frac{1}{4}$ , Sec. 22, Valley Twp., T2N R14W, Allegan Co., MI. About 500 m<sup>2</sup> of cultural debris on the west end of Lk. Allegan (as recently formed by the Consumers Power Co. dam). Moderate priority.
- KBS-77-3  
20 AE 139      Steffans. Small campsite chipping station in the NE $\frac{1}{4}$  of the NE $\frac{1}{4}$  of Sec. 15, Valley Twp., T2N R14W, Allegan Co., MI. About 900 m<sup>2</sup> of cultural debris no more than 300 m N. of Lake Allegan (as recently formed by the Consumers Power Co. dam). This site is associated with 20 AE 88 about 250 m to the E. Low to moderate priority.
- KBS-77-4  
20 AE 140      Lakeview. Isolated scraper and light flint chippage find. This is largely an undetermined type site in need of subsurface investigation for better evaluation. Located in the S $\frac{1}{2}$ , SE $\frac{1}{4}$ , Sec. 16, Valley Twp., T2N R14W, Allegan Co., MI. Low priority.
- KBS-77-5  
20 AE 141      Koopman. Extensive campsite in the SW $\frac{1}{4}$ , SW $\frac{1}{4}$ , Sec. 9, Valley Twp., T2N R14W, Allegan Co., MI. About 23,000 m<sup>2</sup> of cultural debris on an E-W ridge of sand on the D.N.R. Swan Creek Wildlife area. A 17 cm midden was found on the E. side of the site. Moderate to high priority.
- KBS-77-6  
20 AE 198      Lake Allegan. Large campsite area in the SW $\frac{1}{4}$ , NW $\frac{1}{4}$ , Sec. 10, Valley Twp., T2N R14W, Allegan Co., MI. About 46,000 m<sup>2</sup> of cultural debris along the E. bank above the Kalamazoo River about 280 m N.N.E. of the Allegan Dam Site (20 AE 56). Moderate priority.
- KBS-77-7  
20 AE 142      Harath. Large campsite area or possible village in the E $\frac{1}{2}$ , NW $\frac{1}{4}$ , Sec. 10, and in the W $\frac{1}{2}$ , NW $\frac{1}{4}$ , Sec. 10, Valley Twp., T2N R14W, Allegan Co., MI. About 70,000 m<sup>2</sup> of cultural debris in sand blow out and along a series of sand ridges running E -W. Moderate to high priority.

- KBS-77-8  
20 AE 143      Recla. Large campsite in the SE $\frac{1}{4}$ , Sec. 4, Valley Twp., T2N R14W, Allegan Co., MI. About 70,000 m<sup>2</sup> of cultural debris on the N. bank and inland area of the Swan Creek (Koopman) marsh. Several sand blow-outs in open plains area also produced cultural debris. Moderate to high priority.
- KBS-77-9  
20 AE 144      Swan Creek Dam. Large campsite area in the NW $\frac{1}{4}$ , SW $\frac{1}{4}$ , Sec. 6, Valley Twp., T2N R14W, Allegan Co., MI. About 70,000 m<sup>2</sup> of cultural debris are generally scattered over the SW portion of this area. Moderate priority.
- KBS-77-10  
20 AE 145      Pol. Campsite in the SW $\frac{1}{4}$ , SW $\frac{1}{4}$ , Sec. 32, Overisel Twp., T4N R14W, Allegan Co., MI. Intermittent cultural debris found along a low sandy ridge near a tributary stream of the Rabbit River. Moderate to low priority.
- KBS-77-11  
20 AE 146      Bussies. Large campsite or village in the middle of the N $\frac{1}{2}$ , NW $\frac{1}{4}$ , Sec. 7, Heath Twp., T3N R14W, Allegan Co., MI. About 4,000 m<sup>2</sup> of cultural debris on a prominent (possible old) beach running NE-SW. The Bower Site (20 AE 154) is located to the W and the Chicken Farm site (20 AE 155) to the E of this site. Moderate to high priority.
- KBS-77-12  
20 AE 147      Dunningville. Chipping station in the E $\frac{1}{2}$ , NW  $\frac{1}{4}$ , SE $\frac{1}{4}$ , Sec. 28, Heath Twp., T3N R14W, Allegan Co., MI. About 230 m<sup>2</sup> of cultural debris (primarily chippage) on a sandy ridge N of Bear Creek. Low priority.
- KBS-77-13  
20 AE 148      Slotman. Small campsite in the SW $\frac{1}{4}$ , Sec. 20, Heath Twp., T3N R14W, Allegan Co., MI. Isolated projectile point and flint chip find on a sand ridge in the NE corner of a pine tree planting area. Low priority.
- KBS-77-14  
20 AE 149      Bataglia. Possible village site in the NE $\frac{1}{4}$ , NW $\frac{1}{4}$ , Sec. 12, Manlius Twp., T2N R15W, Allegan Co., MI. About 9,300 m<sup>2</sup> of cultural debris ranging from uniface scrapers to bifacially worked tools and projectile points on the S. sand bank of the Kalamazoo River in what is now a flower nursery. This site is one of the most intensive and extensive that was recorded on this survey. High priority.
- KBS-77-15  
20 AE 150      Hamilton Bayou. Possible village or campsite in the middle of the SE $\frac{1}{4}$ , Sec. 31, Overisel Twp., T4N R14W, Allegan Co., MI. This is an extensively occupied site of about 8,000 m<sup>2</sup> of cultural debris ranging from finished tools to flint chippage on the N. rim or end of the Hamilton Bayou (Rabbit River). High to moderate priority.
- KBS-77-16  
20 AE 151      Tucker. Campsite in the NW  $\frac{1}{4}$ , NW $\frac{1}{4}$ , Sec. 34, Overisel Twp., T4N R14W, Allegan Co., MI. About 11,500 m<sup>2</sup> of cultural debris on a terrace next to the W. side of the Rabbit River. Low to moderate priority.

- KBS-77-17  
20 AE 152 Nyboer. Probably campsite in the SW $\frac{1}{4}$ , SW $\frac{1}{4}$ , Sec. 31, Overisel Twp., T4N R14W, Allegan Co., MI. About 230 m<sup>2</sup> of cultural debris on the NW bank of the Hamilton Bayou (Rabbit River). Low priority.
- KBS-77-18  
20 AE 153 Berens. Campsite in the SE $\frac{1}{4}$ , SE $\frac{1}{4}$ , Sec. 31, Overisel Twp., T4N R14W and the NE  $\frac{1}{4}$  of the NE $\frac{1}{4}$  of Sec. 6, Heath Twp., T3N R14W, Allegan Co., MI. About 11,000 m<sup>2</sup> of cultural debris on a spit of land that extends into the Hamilton Bayou (Rabbit River). Low to moderate priority.
- KBS-77-19  
20 AE 154 Bower. Possible campsite or village in the W $\frac{1}{2}$  of the N $\frac{1}{2}$ , NW $\frac{1}{4}$  of Sec. 7, Heath Twp., T3N R14W, Allegan Co., MI. About 10,500 m<sup>2</sup> of cultural debris SE of the Rabbit River and just W of a two-track access road. Moderate priority.
- KBS-77-20  
20 AE 155 Chicken Farm. Campsite in the E $\frac{1}{2}$ , N $\frac{1}{2}$ , NW $\frac{1}{4}$ , Sec. 7, Heath Twp., T3N R14W, Allegan Co., MI. About 230 m<sup>2</sup> of lightly scattered cultural debris on the edge of a small kettle depression W of 47th St. Moderate to low priority.
- KBS-77-21  
20 AE 156 Vanderkolk. Small campsite or chipping station in the E $\frac{1}{2}$ , NE $\frac{1}{4}$ , Sec. 31, Overisel Twp., T4N R14W, Allegan Co., MI. About 1,400 m<sup>2</sup> of lightly scattered cultural debris on a low ridge that runs EW just NW of the corner of 46th St. and 137th Ave. Low priority.
- KBS-77-22  
20 AE 157 Schutte. Small campsite in the E $\frac{1}{2}$ , SE $\frac{1}{4}$ , Sec. 31, Overisel Twp., T4N R14W, Allegan Co., MI. About 930 m<sup>2</sup> of very lightly scattered cultural debris in a low depression just W of a tributary stream of the Rabbit River. Low priority.
- KBS-77-23  
20 AE 158 Sink Lake. Campsite or possible village in the middle of Sec. 7, Heath Twp., T3N R14W, Allegan Co., MI. About 8,000 m<sup>2</sup> of relatively heavily scattered cultural debris on the W edge of Sink Lake on both sides of 47th St. Moderate priority.
- KBS-77-24  
20 AE 159 Hiscock. Possible village in the SE $\frac{1}{4}$ , SW $\frac{1}{4}$ , Sec. 12 and the N $\frac{1}{2}$ , N $\frac{1}{2}$ , Sec. 13, Valley Twp., T2N R14W, Allegan Co., MI. Personal collection in the hands of Mr. Hiscock taken from an area of sand blow outs on a sand knoll 400 m W of M40 situated in gently rolling terrain. A surface collection was also taken from this area by a WMU field party and photographs were made of Mr. Hiscock's projectile point collection. High to moderate priority.
- KBS-77-25  
20 AE 160 Eding. Small chipping station in the NW $\frac{1}{4}$ , Sec. 8, Heath Twp., T3N R14W, Allegan Co., MI. About 1,150 m<sup>2</sup> of very lightly scattered cultural debris on a sand ridge on the N side of a low depression bordering dark organic bottom lands. Low priority.

- KBS-77-26  
20 AE 161 Jasper. Possible small campsite with a fairly isolated projectile point found in the NE $\frac{1}{4}$ , NE $\frac{1}{4}$ , Sec. 8, Heath Twp., T3N R14W, Allegan Co., MI. About 14,000 m<sup>2</sup> of very lightly scattered cultural debris on a ridge overlooking dark organic bottom lands to the S. Low priority.
- KBS-77-27  
20 AE 162 Lolli-Pup. Chipping station in the middle of the NW $\frac{1}{4}$ , Sec. 8, Heath Twp., T3N R14W, Allegan Co., MI. About 930 m<sup>2</sup> of cultural debris on a sand ridge on the N. side of a low depression, probably a former lake bottom. Low to moderate priority.
- KBS-77-28  
20 AE 163 Hamilton. Village site in the SW $\frac{1}{4}$ , NE $\frac{1}{4}$ , Sec. 8, Heath Twp., T3N R14W, Allegan Co., MI. About 18,000 m<sup>2</sup> of cultural debris on a large N-S sand and clay ridge above a former lake. High priority.
- KBS-77-29  
20 AE 164 Kempkers. Campsite in the SW $\frac{1}{4}$ , NE $\frac{1}{4}$ , Sec. 8, Heath Twp., T3N R14W, Allegan Co., MI. About 3,700 m<sup>2</sup> of cultural debris on a knoll lying just above a former shallow lake. Moderate to high priority.
- KBS-77-30  
20 AE 165 Mud Ridge. Campsite in the SW $\frac{1}{4}$ , NE $\frac{1}{4}$ , Sec. 8, Heath Twp., T3N R14W, Allegan Co., MI. About 900 m<sup>2</sup> of cultural debris located on a small peninsula of land extending into a former shallow lake. Moderate priority.
- KBS-77-31  
20 AE 166 Julius. Possible campsite in the SW $\frac{1}{4}$ , NE $\frac{1}{4}$ , Sec. 8, Heath Twp., T3N R14W, Allegan Co., MI. About 230 m<sup>2</sup> of light cultural scatter on a small sand rise overlooking a former shallow lake to the north. Low to moderate priority.
- KBS-77-32  
20 AE 167 Sandy Ridge A. Isolated projectile point found in the NE $\frac{1}{4}$ , SE $\frac{1}{4}$ , Sec. 5, Heath Twp., T3N R14W, Allegan Co., MI. Point was found on a high sand ridge a half mile south of the Rabbit River. Low priority.
- KBS-77-33  
20 AE 168 Sandy Ridge B. Isolated projectile point found in the middle of the SE $\frac{1}{4}$ , Sec. 5, Heath Twp., T3N R14W, Allegan Co., MI. Point found below a high knoll on a small peninsula of land extending into a former marsh. Low priority.
- KBS-77-34  
20 AE 169 Spring Brook. Isolated projectile point found in the N $\frac{1}{2}$ , NW $\frac{1}{4}$ , SE $\frac{1}{4}$ , Sec. 5, Heath Twp., T3N R14W, Allegan Co., MI. Point found on flat lands a half mile S of the Rabbit River. Low priority.
- KBS-77-35  
20 AE 170 Tributary A. Chipping station in the NW $\frac{1}{4}$ , SW $\frac{1}{4}$ , Sec. 32, Overisel Twp., T4N R14W, Allegan Co., MI. About 900 m<sup>2</sup> of cultural debris found on the east side of a small tributary creek which runs a half mile south to the Rabbit River. Low priority.

- KBS-77-36  
20 AE 171  
Tributary B. Chipping station in the NW corner of the SW $\frac{1}{4}$ , SW $\frac{1}{4}$ , Sec. 32, Overisel Twp., T4N R14W, Allegan Co., MI. About 225 m<sup>2</sup> of cultural debris found on the east side of a small tributary creek which runs one quarter mile south to the Rabbit River. Low priority.
- KBS-77-37  
20 AE 172  
Berens Point. Small chipping station in the N center part of the SW $\frac{1}{4}$ , SW $\frac{1}{4}$ , Sec. 32, Overisel Twp., T4N R14W, Allegan Co., MI. Light cultural debris NE of the junction of a small tributary creek and the Rabbit River. Low priority.
- KBS-77-38  
20 AE 173  
Klingenburg. Chipping station in the SE $\frac{1}{4}$ , SW $\frac{1}{4}$ , Sec. 32, Overisel Twp., T4N R14W, Allegan Co., MI. About 225 m<sup>2</sup> of light cultural scatter in a road cut one quarter mile north of the Rabbit River. Low priority. New house construction in immediate area.
- KBS-77-39  
20 AE 174  
Schotten. Campsite and possible chipping area in the SW $\frac{1}{4}$ , SE $\frac{1}{4}$ , Sec. 33, Overisel Twp., T4N R14W, Allegan Co., MI. About 225 m<sup>2</sup> of cultural debris on the edge of a wooded river floodplain, a quarter mile N of the Rabbit River. A reported historic Indian campsite. Moderate priority.
- KBS-77-40  
20 AE 175  
Emerson. Possible campsite in the NW $\frac{1}{4}$ , Sec. 3, Heath Twp., T3N R14W, Allegan Co., MI. About 900 m<sup>2</sup> of cultural debris on the N side of the Rabbit River and the S end of 42nd street. Low to moderate priority.
- KBS-77-41  
20 AE 176  
Rigterink. Possible Archaic campsite in the NE $\frac{1}{4}$ , SW $\frac{1}{4}$ , Sec. 29, Overisel Twp., T4N R14W, Allegan Co., MI. About 225 m<sup>2</sup> of cultural scatter on a high morainic knoll overlooking the Rabbit River basin to the south. Low to moderate priority.
- KBS-77-42  
20 AE 177  
Albers. Small chipping station in the N $\frac{1}{2}$ , NW $\frac{1}{4}$ , SW $\frac{1}{4}$ , Sec. 29, Overisel Twp., T4N R14W, Allegan Co., MI. About 5,000 m<sup>2</sup> of light scatter on a high morainic knoll overlooking the Rabbit River basin to the south. Low priority.
- KBS-77-43  
20 AE 178  
C. & O. Blowout. Small chipping station in the NE $\frac{1}{4}$ , NW $\frac{1}{4}$ , Sec. 21, Heath Twp., T3N R14W, Allegan Co., MI. About 225 m<sup>2</sup> of cultural debris in a sand blowout area on a low sand ridge just east of the former C. & O. railroad grade. Low priority.
- KBS-77-44  
20 AE 179  
Palmer Bayou. Woodland campsite in the middle of Sec. 32, Heath Twp., T3N R14W, Allegan Co., MI. About 7,000 m<sup>2</sup> of cultural debris on the top of a sandy bluff area overlooking the Kalamazoo River to the south in the Allegan State Forest. Moderate priority.
- KBS-77-45  
20 AE 180  
Nevenzel. Possible campsite in the NE $\frac{1}{4}$ , SW $\frac{1}{4}$ , Sec. 34, Heath Twp., T3N R14W, Allegan Co., MI. About 15,000 m<sup>2</sup> of cultural debris within sand blowout areas on the top of a prominent ridge in an open plains. Low to moderate priority.

- KBS-77-46  
20 AE 181  
Vanvoord. Campsite in the NE $\frac{1}{4}$ , SW $\frac{1}{4}$ , Sec. 34, Heath Twp., T3N R14W, Allegan Co., MI. About 225 m<sup>2</sup> of cultural debris and two in situ exposed firepits on the top of a low sand ridge in an open plains area just west of site KBS-77-45. Moderate priority.
- KBS-77-47  
20 SE 182  
Towers. Isolated projectile point found in the NW $\frac{1}{4}$ , NE $\frac{1}{4}$ , Sec. 34, Heath Twp., T3N R14W, Allegan Co., MI. Triangular point found on a subtle sand rise behind and E of houses next to woods. Low priority.
- KBS-77-48  
20 AE 183  
Jerome. Small campsite in the NW $\frac{1}{4}$ , SW $\frac{1}{4}$ , Sec. 34, Overisel Twp., T4N R14W, Allegan Co., MI. About 1400 m<sup>2</sup> of cultural debris and firepits exposed by the plow on the west bank of the wooded floodplain of the Rabbit River. Moderate priority.
- KBS-77-49  
20 AE 184  
Schaap. Possible village site in the N $\frac{1}{2}$ , NW $\frac{1}{4}$ , Sec. 3, Heath Twp., T3N R14W, Allegan Co., MI. About 8,000 m<sup>2</sup> of debris found on a peninsula of land sloping down and E into an "almost oxbow" bend in the Rabbit River. Moderate to high priority.
- KBS-77-50  
20 AE 185  
Schaap Firepits. Firepits in the W $\frac{1}{2}$ , NW $\frac{1}{4}$ , Sec. 3, Heath Twp., T3N R14W, Allegan Co., MI. Several 1 meter wide by .5 meter deep depressional pits with numerous firecracked rocks on a well defined terrace on the W side of the Rabbit River. High priority.
- KBS-77-51  
20 AE 186  
Schaap Mound. Mound in the NE $\frac{1}{4}$ , SW $\frac{1}{4}$ , Sec. 34, Overisel Twp., T4N R14W, Allegan Co., MI. An oblong mound about 4 meters high and 10 meters long, isolated in the W floodplain of the Rabbit River. High priority.
- KBS-77-52  
20 AE 187  
Jerry. Chipping station in the SW $\frac{1}{4}$ , SW $\frac{1}{4}$ , Sec. 9, Heath Twp., T3N R14W, Allegan Co., MI. Cultural debris in an area about 225 m<sup>2</sup> on a small sandy rise on the N. edge of a minor swamp. Low priority.
- KBS-77-53  
20 AE 188  
Austin. Small chipping area in the SE $\frac{1}{4}$ , NW $\frac{1}{4}$ , Sec. 27, Overisel Twp., T4N R14W, Allegan Co., MI. Cultural debris found in an area about 225 m<sup>2</sup> on a small ridge on the W. bank of a small ravine flowing one mile S. to the Rabbit River. Low priority.
- KBS-77-54  
20 AE 189  
Lundy Pointe. Campsite in the E $\frac{1}{2}$ , NE $\frac{1}{4}$ , Sec. 34, Overisel Twp., T4N R14W, Allegan Co., MI. Campsite and possible chipping debris in an area about 225 m<sup>2</sup> on a prominent and high point of land overlooking the wooded floodplains of the Rabbit River to the south. Moderate priority.
- KBS-77-55  
20 AE 190  
High Point. Possible campsite in the NE corner of the NE $\frac{1}{4}$ , Sec. 34, Overisel Twp., T4N R14W, Allegan Co., MI. Light scatter about 225 m<sup>2</sup> found in a low relief area one half mile N. of the Rabbit River. Low to moderate priority.

- KBS-77-56  
20 AE 191  
Lohman. Isolated projectile point found in the NW $\frac{1}{4}$ , NW $\frac{1}{4}$ , SW $\frac{1}{4}$ , Sec. 36, Fillmore Twp., T4N R15W, Allegan Co., MI. About 230 m<sup>2</sup> of questionable flint chippage and fire cracked rock associated with this projectile point on a high moraine. Low priority.
- KBS-77-57  
20 AE 192  
Indian Shores. Small chipping station in the S $\frac{1}{2}$ , Sec. 14, Valley Twp., T2N R14W, Allegan Co., MI. A slight scatter of flint chippage and fire cracked rock near the most northernly point of land jutting into Lake Allegan from the S in an area of resort home development. Low priority.
- KBS-77-58  
20 AE 193  
Pine Point. Small campsite in the SE $\frac{1}{4}$ , SE $\frac{1}{4}$ , Sec. 17, Valley Twp., T2N R14W, Allegan Co., MI. About 230 m<sup>2</sup> of light flint chippage scatter on the NE banks above the Swan Creek Pond. Low priority.
- KBS-77-59  
20 AE 194  
Campground #6. Small campsite in the S $\frac{1}{2}$ , SE $\frac{1}{4}$ , Sec. 8, Valley Twp., T2N R14W, Allegan Co., MI. About 3,100 m<sup>2</sup> of light flint chippage scatter and fire cracked rock in DNR campgrounds on the W bank of Swan Creek. Low priority.
- KBS-77-60  
20 AE 195  
Elam. Large campsite or village in the SW $\frac{1}{4}$ , SW $\frac{1}{4}$ , Sec. 10, Valley Twp., T2N R14W, Allegan Co., MI. About 8,300 m<sup>2</sup> of Late Woodland cultural debris ranging from ceramic sherds to projectile points on a floodplain terrace along the S side of the Kalamazoo River across from 20 AE 56  $\frac{1}{4}$  mi. to the N. Excavation of this site was conducted during the Spring of 1978 by WMU's archaeological field school. High priority.
- KBS-77-61  
20 AE 196  
Sand Creek. Campsite in the SE $\frac{1}{4}$ , SE $\frac{1}{4}$ , Sec. 3, Valley Twp., T2N R14W, Allegan Co., MI. A private collection of projectile points by Mr. Clarence Hiscock and a light scatter of flint chippage that was surface collected by a WMU survey field party from a ridge above Sand Creek now covered with pine trees. Photographs were taken of Mr. Hiscock's possible Late Archaic to Late Woodland projectile point collection. Moderate priority.
- KBS-77-62  
20 AE 197  
Millgrove. Campsite in the S $\frac{1}{2}$ , SE $\frac{1}{4}$ , SW $\frac{1}{4}$ , Sec. 12, Valley Twp., T2N R14W, Allegan Co., MI. Area of Late Archaic to Late Woodland cultural debris in an old vineyard on a grassed over rolling moraine. A private collection of projectile points by Mr. Clarence Hiscock was photographed and a surface collection was made by a WMU field survey party. Moderate priority.



## 6. Tentative Interpretations and Conclusions

The 62 sites described in the preceding section are difficult to summarize and interpret. With rare exception, surface collections yielded only small quantities of cultural debris and few diagnostic items. On the basis of data currently available to us it is apparent that the pre-historic occupation of the project area spans the Archaic and Woodland periods. No sites evidence utilization by Paleo-Indian hunters of the Terminal Pleistocene.

The overwhelming majority of sites discovered by the survey team appear to represent extensive rather than intensive use of the research universe. Most prevalent are those sites represented by "spot" finds of projectile points and/or scrapers, with or without associated lithic debitage. We believe such sites to reflect episodes of hunting and/or knapping activity characteristic of small mobile populations exploiting the faunal resources of the area, probably on a seasonal basis. While several of these small sites should be investigated in order that we might more precisely delineate their function, at this time they warrant no more than "low priority" status.

On the other hand, we have identified several components which clearly are deserving of systematic study in the near future. This is particularly true for sites such as Bataglia (20 AE 149), Hamilton (20 AE 163), Schaap Mound (20 AE 186) and the Elam site (20 AE 195). Currently, the WMU archaeological field school is testing the Elam site and, as anticipated, the results of excavation to date indicate that this was the locus of intensive occupation by Upper Mississippian peoples between perhaps A.D. 1200-1500. The kinds and quantities of cultural debris recovered during survey

indicated that subsurface testing of this site would prove most profitable. It can now be said that the density of all classes of debris and also cultural features is very high at Elam. And data recovered from this site, together with materials previously excavated by WMU field schools from the nearby Allegan Dam (20 AE 56) and Schwerdt (20 AE 127) sites, should ultimately enable us to make some meaningful statements about the late prehistoric occupation of the lower valley.

Although we can offer but little interpretation of our survey data at the present time, we suspect that the following observations on site distribution and intensity of occupation may ultimately prove valuable for explaining prehistoric land use patterns in the universe of this study and beyond.

Sixty-three archaeological sites, both previously known and newly recorded, occur within the surveyed portions of the 1977 transect, resulting in an average site density of one site per 23 hectares investigated. Site density by sampling stratum is as follows: Stratum 1- 4; Stratum 3- 11; Stratum 3-1- 11; Stratum 3-2- 19; Stratum 12- 14; and Stratum 12-2- 4. When strata are considered one at a time, we observe that the density of sites ranges between less than  $\frac{1}{2}$  and almost twice the average recorded for the entire sampling universe. Site density is observed to be lowest in areas which are removed from permanent streams and where low to moderately productive soils (with respect to the development of mixed hardwood and oak forest cover) occur. Conversely, where moderate to highly productive soils differ only with respect to drainage, sites are found to occur along the Kalamazoo River with a frequency approaching the average, whereas the frequency of occurrence adjacent to major tributaries like the Rabbit

River and Swan Creek is almost twice as high. Inasmuch as these comparisons are based not on the extent of land or number of sampling units existing within the various strata, but rather on the amount of ground actually walked by the surveyors, sampling bias should not be a factor. Rather, these data would appear to indicate a marked riverine orientation for prehistoric sites, with the preferred locations for occupancy being the tributary valleys.

Somewhat different results are obtained if we evaluate our distributional data using the following scale as a measure of the aboriginal intensity of occupation (Christopher Peebles, personal communication):

- 01: spot find = 1 point
- 02: lithic scatter = 5 points
- 03: component = 10 points

Assigning these values to 56 of 63 sites (i.e. those sites recorded during the project) occurring within the surveyed portions of the transect, a mean intensity score of 5.63 is obtained. By sampling stratum the scores recorded are as follows: Stratum 1- 3.67; Stratum 3- 4.37; Stratum 3-1- 8.33; Stratum 3-2- 5.73; Stratum 12- 4.64; and Stratum 12-2- 7.50. These figures, when compared with the previous data set, also illustrate a preference for locating settlements in close proximity to perennial streams, but with main habitation areas occurring most frequently along the Kalamazoo (Stratum 3-1) and, secondarily, on the Rabbit River upstream from Hamilton (Stratum 12-2). Limited activity or special purpose sites (e.g. temporary hunting camps, chipping stations) occur at some distance from main habitation sites, being scattered throughout the "hinterlands".

Our observations, although based on a small and inadequate data set, at least tentatively suggest a pattern of prehistoric settlement in the

project area consisting of seasonal or multi-seasonal base camps and ancillary limited activity sites. And while this pattern may persist through time, only an extensive program of test excavation will elucidate more specific aspects of the subsistence-settlement system characterizing the various archaeological cultures of this area.

## 7. Recommendations for Future Resource Development and Management

Most of the sites recorded during this survey were found in fields under cultivation and erosional features (e.g. sand blow-outs). Therefore, the context within which the archaeological data occur is constantly undergoing alteration and essential information is being irretrievably lost. However, in light of present land use patterns in the area it is also unlikely that the pace of destruction will accelerate in the near future. This is especially true with respect to those sites occurring in the Allegan State Game Area. Since this large parcel of land is no longer in private ownership, sites located here are reasonably safe, with the possible exception of occasional acts of vandalism.

With little data in hand, it is quite impossible to make recommendations for the management and preservation of the sites reported herein. Several of the sites given "high priority" status by us will ultimately be tested as part of the archaeological program sponsored by WMU in the Kalamazoo River Basin. As more information accumulates through the systematic testing of these sites, recommendations pertaining to their development and management will be forthcoming.

References Cited

Baldwin (Garland), Elizabeth

1976. Inventory of Prehistoric Sites, Kalamazoo-Black-Macatawa-Paw Paw Rivers Basin. Technical Paper No. 7, United States Department of Agriculture. Lansing.

Cremin, William M.

1977. A Report on the 1977 Test Excavations at the Allegan Dam Site (20 AE 56), Allegan County, Michigan. Report submitted to the Michigan History Division, Michigan Department of State. Lansing.

Lovis, William

1976. Quarter Sections and Forests: An Example of Probability Sampling in the Eastern Woodlands. American Antiquity, 14(3): 364-372.

USDA-Soil Conservation Service

1974. General Soil Map of the Kalamazoo-Black-Macatawa-Paw Paw Rivers Basin. United States Department of Agriculture. Lansing.

Appendix I: Catalog of Surface Collection from 62 Sites

WESTERN MICHIGAN UNIVERSITY  
Department of Anthropology  
Artifact Count Record

Site Beltman KBS-77-1/20 AE 137

Classifier Jon Leader

Square Surface Survey

Today's Date 5/17/77

Level or  
Feature \_\_\_\_\_

Date Material  
Collected 5/9/77

Chipped Stone

Ground Stone

Biface (describe) 1  
Arrowhead-Broken

Celt \_\_\_\_\_

Tip

Grooved Ax \_\_\_\_\_

Uniface (describe) 1  
Scraper

Adz \_\_\_\_\_

Drill \_\_\_\_\_

Mortar \_\_\_\_\_

Core 1

Pestle \_\_\_\_\_

Other (specify) 6  
Non-utilized flakes

Rubbing Stone \_\_\_\_\_

Utilized Flakes \_\_\_\_\_

Other (specify) \_\_\_\_\_

Weight \_\_\_\_\_

Bone

Shell Yes

Fragments 4

Mollusc \_\_\_\_\_

Artifacts (specify) \_\_\_\_\_

Turtle \_\_\_\_\_

Pottery

Rim sherds \_\_\_\_\_

Body sherds 6

Clay pipe \_\_\_\_\_

Other (specify) Brick 1

Remarks: Note presence of charcoal, fire-cracked rock, etc.



WESTERN MICHIGAN UNIVERSITY  
Department of Anthropology  
Artifact Count Record

Site Neandercutt Pointe  
KBS-77-2 /20 AE 138

Classifier Robert Hutton

Square Surface Collection

Today's Date 5/17/77

Level or  
Feature \_\_\_\_\_

Date Material  
Collected 5/11/77

Chipped Stone

Biface (describe) \_\_\_\_\_

Uniface (describe) 1

Drill \_\_\_\_\_

Core 4

Other (specify) 82  
non-utilized flakes

Utilized Flakes 10

Weight \_\_\_\_\_

Bone

Fragments \_\_\_\_\_

Artifacts (specify) \_\_\_\_\_

Pottery

Rim sherds \_\_\_\_\_

Clay pipe \_\_\_\_\_

Other (specify) \_\_\_\_\_

Ground Stone

Celt \_\_\_\_\_

Grooved Ax \_\_\_\_\_

Adz \_\_\_\_\_

Mortar \_\_\_\_\_

Pestle \_\_\_\_\_

Rubbing Stone \_\_\_\_\_

Other (specify) \_\_\_\_\_

Shell

Mollusc 1

Turtle \_\_\_\_\_

Body sherds 2

Remarks: Note presence of charcoal, fire-cracked rock, etc.

WESTERN MICHIGAN UNIVERSITY  
Department of Anthropology  
Artifact Count Record

Site Steffans KBS-77-3/20 AE 139

Classifier Robert Hutton

Square Surface Collection

Today's Date 5/24/77

Level or  
Feature \_\_\_\_\_

Date Material  
Collected 5/11/77

Chipped Stone

Ground Stone

Biface (describe) \_\_\_\_\_

Celt \_\_\_\_\_

Uniface (describe) \_\_\_\_\_

Grooved Ax \_\_\_\_\_

Drill \_\_\_\_\_

Adz \_\_\_\_\_

Core \_\_\_\_\_

Mortar \_\_\_\_\_

Other (specify) 10  
unutilized flakes

Pestle \_\_\_\_\_

Utilized Flakes 3

Rubbing Stone \_\_\_\_\_

Other (specify) \_\_\_\_\_

Weight \_\_\_\_\_

Bone

Shell

Fragments \_\_\_\_\_

Mollusc \_\_\_\_\_

Artifacts (specify) \_\_\_\_\_

Turtle \_\_\_\_\_

Pottery

Rim sherds \_\_\_\_\_

Body sherds 1

Clay pipe \_\_\_\_\_

Other (specify) \_\_\_\_\_

Remarks: Note presence of charcoal, fire-cracked rock, etc.

WESTERN MICHIGAN UNIVERSITY  
Department of Anthropology  
Artifact Count Record

Site Lakeview KBS-77-4/20 AE 140

Classifier Joyce Tressler

Square Surface Collection

Today's Date 5/24/77

Level or  
Feature \_\_\_\_\_

Date Material  
Collected 5/12/77

Chipped Stone

Ground Stone

Biface (describe) \_\_\_\_\_

Celt \_\_\_\_\_

Uniface (describe) 1

Grooved Ax \_\_\_\_\_

Scraper Awl \_\_\_\_\_

Adz \_\_\_\_\_

Drill \_\_\_\_\_

Mortar \_\_\_\_\_

Core \_\_\_\_\_

Pestle \_\_\_\_\_

Other (specify) 6  
Chippage

Rubbing Stone \_\_\_\_\_

Utilized Flakes \_\_\_\_\_

Other (specify) \_\_\_\_\_

Weight \_\_\_\_\_

Bone

Shell

Fragments \_\_\_\_\_

Mollusc \_\_\_\_\_

Artifacts (specify) \_\_\_\_\_

Turtle \_\_\_\_\_

Pottery

Rim sherds \_\_\_\_\_

Body sherds 1

Clay pipe \_\_\_\_\_

Other (specify) \_\_\_\_\_

Remarks: Note presence of charcoal, fire-cracked rock, etc.

WESTERN MICHIGAN UNIVERSITY  
Department of Anthropology  
Artifact Count Record

Site Koopman KBS-77-5/20 AE 141

Classifier Deb Lowmaster & Jon Leader

Square Surface Collection

Today's Date 5/20/77

Level or  
Feature \_\_\_\_\_

Date Material  
Collected 5/12/77

Chipped Stone

Ground Stone

Biface (describe) 1  
projectile pt.

Celt \_\_\_\_\_

Uniface (describe) \_\_\_\_\_

Grooved Ax \_\_\_\_\_

Drill \_\_\_\_\_

Adz \_\_\_\_\_

Core 5

Mortar \_\_\_\_\_

Other (specify) 65  
non-utilized chippage

Pestle \_\_\_\_\_

Utilized Flakes \_\_\_\_\_

Rubbing Stone \_\_\_\_\_

Weight \_\_\_\_\_

Other (specify) \_\_\_\_\_

Bone

Shell

Fragments 3

Mollusc \_\_\_\_\_

Artifacts (specify) \_\_\_\_\_

Turtle \_\_\_\_\_

Pottery

Rim sherds \_\_\_\_\_

Body sherds \_\_\_\_\_

Clay pipe \_\_\_\_\_

Other (specify) \_\_\_\_\_

Remarks: Note presence of charcoal, fire-cracked rock, etc.

Historic Artifacts

2 pieces glass

2 F.C.R.

1 round nail

1 historic pottery rim

2 pieces historic porcelin

1 piece shoe leather

2 historic sherds

WESTERN MICHIGAN UNIVERSITY  
Department of Anthropology  
Artifact Count Record

Site Lake Allegan KBS-77-6/20 AE 198

Classifier Robert Hutton

Square Surface Collection

Today's Date 5/17/77

Level or  
Feature \_\_\_\_\_

Date Material  
Collected 5/13/77

Chipped Stone

Ground Stone

Biface (describe) 4

Celt \_\_\_\_\_

projectile points

Grooved Ax \_\_\_\_\_

Uniface (describe) 2

Adz \_\_\_\_\_

Drill \_\_\_\_\_

Mortar \_\_\_\_\_

Core \_\_\_\_\_

Pestle \_\_\_\_\_

Other (specify)  
utilized flake 1

Rubbing Stone \_\_\_\_\_

Utilized Flakes 4

Other (specify) \_\_\_\_\_

Weight \_\_\_\_\_

Bone

Shell

Fragments \_\_\_\_\_

Mollusc \_\_\_\_\_

Artifacts (specify) \_\_\_\_\_

Turtle \_\_\_\_\_

Pottery

Rim sherds 1

Body sherds 4

Clay pipe \_\_\_\_\_

Other (specify) \_\_\_\_\_

Remarks: Note presence of charcoal, fire-cracked rock, etc.

1 broken frame of pair of glasses

WESTERN MICHIGAN UNIVERSITY  
Department of Anthropology  
Artifact Count Record

Site Harath KBS-77-7/20 AE 142

Classifier Jon Leader

Square Surface Collection

Today's Date 5/17/77

Level or  
Feature \_\_\_\_\_

Date Material  
Collected 5/13/77

Chipped Stone

Biface (describe) 1  
base of arrowhead

Uniface (describe) 3

Drill \_\_\_\_\_

Core 1

Other (specify) 100  
non utilized chippage

Utilized Flakes \_\_\_\_\_

Weight \_\_\_\_\_

Bone

Fragments \_\_\_\_\_

Artifacts (specify) \_\_\_\_\_

Pottery

Rim sherds \_\_\_\_\_

Clay pipe \_\_\_\_\_

Other (specify) \_\_\_\_\_

Ground Stone

Celt \_\_\_\_\_

Grooved Ax \_\_\_\_\_

Adz \_\_\_\_\_

Mortar \_\_\_\_\_

Pestle \_\_\_\_\_

Rubbing Stone \_\_\_\_\_

Other (specify) \_\_\_\_\_

Shell

Mollusc \_\_\_\_\_

Turtle \_\_\_\_\_

Remarks: Note presence of charcoal, fire-cracked rock, etc.

A.) Fire cracked stone 3

WESTERN MICHIGAN UNIVERSITY  
Department of Anthropology  
Artifact Count Record

Site Recla KBS-77-8/20 AE 143

Classifier Jon Leader

Square Surface Collection

Today's Date 5/17/77

Level or  
Feature \_\_\_\_\_

Date Material  
Collected 5/13/77

Chipped Stone

Ground Stone

Biface (describe) \_\_\_\_\_

Celt \_\_\_\_\_

Uniface (describe) \_\_\_\_\_

Grooved Ax \_\_\_\_\_

Drill \_\_\_\_\_

Adz \_\_\_\_\_

Core \_\_\_\_\_

Mortar \_\_\_\_\_

Other (specify) 56  
non-utilized chippage

Pestle \_\_\_\_\_

Rubbing Stone \_\_\_\_\_

Utilized Flakes \_\_\_\_\_

Other (specify) \_\_\_\_\_

Weight \_\_\_\_\_

Bone

Shell

Fragments 1

Mollusc \_\_\_\_\_

Artifacts (specify) \_\_\_\_\_

Turtle \_\_\_\_\_

Pottery

Rim sherds \_\_\_\_\_

Body sherds \_\_\_\_\_

Clay pipe \_\_\_\_\_

Other (specify) \_\_\_\_\_

Remarks: Note presence of charcoal, fire-cracked rock, etc.

- |                               |   |
|-------------------------------|---|
| 1. Fire cracked stone         | 2 |
| 2. .38 cal. bullet wad cutter | 1 |
| 3. .22 cal. long rifle bullet | 1 |
| 4. glass                      | 1 |

WESTERN MICHIGAN UNIVERSITY  
Department of Anthropology  
Artifact Count Record

Swan Creek Dam

Site KBS-77-9 /20 AE 144

Classifier Joyce Tressler

Square Surface Collection

Today's Date 5/24/77

Level or  
Feature \_\_\_\_\_

Date Material  
Collected 5/16/77

Chipped Stone

Ground Stone

Biface (describe) 1  
triangular point

Celt \_\_\_\_\_

Uniface (describe) \_\_\_\_\_

Grooved Ax \_\_\_\_\_

Drill \_\_\_\_\_

Adz \_\_\_\_\_

Core 1

Mortar \_\_\_\_\_

Other (specify) 19  
chips & flakes

Pestle \_\_\_\_\_

Utilized Flakes 2

Rubbing Stone \_\_\_\_\_

Weight \_\_\_\_\_

Other (specify) \_\_\_\_\_

Bone small tubular 4, round 1

Shell

Fragments 5 total

Mollusc \_\_\_\_\_

Artifacts (specify) \_\_\_\_\_

Turtle \_\_\_\_\_

Pottery

Rim sherds \_\_\_\_\_

Body sherds \_\_\_\_\_

Clay pipe \_\_\_\_\_

Other (specify) \_\_\_\_\_

Remarks: Note presence of charcoal, fire-cracked rock, etc.

Historic ceramics 2 pieces



WESTERN MICHIGAN UNIVERSITY  
Department of Anthropology  
Artifact Count Record

Site Pol KBS-77-10/20 AE 145

Classifier Robert Hutton

Square Surface collection

Today's Date 5/24/77

Level or  
Feature \_\_\_\_\_

Date Material  
Collected 5/18/77

Chipped Stone

Biface (describe) 2

projectile point  
scraper

Uniface (describe) 3

Drill \_\_\_\_\_

Core \_\_\_\_\_

Other (specify) 37  
chippage

Utilized Flakes 3

Weight \_\_\_\_\_

Bone

Fragments \_\_\_\_\_

Artifacts (specify) \_\_\_\_\_

Pottery

Rim sherds \_\_\_\_\_

Clay pipe \_\_\_\_\_

Other (specify) \_\_\_\_\_

Ground Stone

Celt \_\_\_\_\_

Grooved Ax \_\_\_\_\_

Adz \_\_\_\_\_

Mortar \_\_\_\_\_

Pestle \_\_\_\_\_

Rubbing Stone \_\_\_\_\_

Other (specify) \_\_\_\_\_

Shell

Mollusc 4

Turtle \_\_\_\_\_

Remarks: Note presence of charcoal, fire-cracked rock, etc.

WESTERN MICHIGAN UNIVERSITY  
Department of Anthropology  
Artifact Count Record

Site Bussies Site KBS-77-11/20 AE 146

Classifier Patti Mettler

Square Surface Survey

Today's Date 5/31/77

Level or  
Feature \_\_\_\_\_

Date Material  
Collected 5/19/77

Chipped Stone

Ground Stone

Biface (describe) 1  
projectile point

Celt \_\_\_\_\_

Uniface (describe) \_\_\_\_\_

Grooved Ax \_\_\_\_\_

Drill \_\_\_\_\_

Adz \_\_\_\_\_

Core \_\_\_\_\_

Mortar \_\_\_\_\_

Other (specify) 9  
chippage

Pestle \_\_\_\_\_

Utilized Flakes \_\_\_\_\_

Rubbing Stone \_\_\_\_\_

Weight \_\_\_\_\_

Other (specify) \_\_\_\_\_

Bone

Shell

Fragments \_\_\_\_\_

Mollusc 1

Artifacts (specify) \_\_\_\_\_

Turtle \_\_\_\_\_

Pottery

Rim sherds \_\_\_\_\_

Body sherds \_\_\_\_\_

Clay pipe \_\_\_\_\_

Other (specify) \_\_\_\_\_

Remarks: Note presence of charcoal, fire-cracked rock, etc.

WESTERN MICHIGAN UNIVERSITY  
Department of Anthropology  
Artifact Count Record

Site Dunningville: KBS-77-12/20 AE 147

Classifier Joyce Tressler

Square Surface Collection

Today's Date 5/24/77

Level or  
Feature \_\_\_\_\_

Date Material  
Collected 5/19/77

Chipped Stone

Ground Stone

Biface (describe) \_\_\_\_\_

Celt \_\_\_\_\_

Uniface (describe) \_\_\_\_\_

Grooved Ax \_\_\_\_\_

Drill \_\_\_\_\_

Adz \_\_\_\_\_

Core \_\_\_\_\_

Mortar \_\_\_\_\_

Other (specify)  
chippage 2

Pestle \_\_\_\_\_

Rubbing Stone \_\_\_\_\_

Utilized Flakes 1

Other (specify) \_\_\_\_\_

Weight \_\_\_\_\_

Bone

Shell

Fragments \_\_\_\_\_

Mollusc \_\_\_\_\_

Artifacts (specify) \_\_\_\_\_

Turtle \_\_\_\_\_

Pottery

Rim sherds \_\_\_\_\_

Body sherds \_\_\_\_\_

Clay pipe \_\_\_\_\_

Other (specify) \_\_\_\_\_

Remarks: Note presence of charcoal, fire-cracked rock, etc.

WESTERN MICHIGAN UNIVERSITY  
Department of Anthropology  
Artifact Count Record

Site Slotman KBS-77-13/20 AE 148

Classifier Joyce Tressler

Square Surface Collection

Today's Date 5/24/77

Level or  
Feature \_\_\_\_\_

Date Material  
Collected 5/19/77

Chipped Stone

Biface (describe) 1  
point base

Uniface (describe) \_\_\_\_\_

Drill \_\_\_\_\_

Core \_\_\_\_\_

Other (specify) \_\_\_\_\_

Utilized Flakes 1

Weight \_\_\_\_\_

Bone

Fragments \_\_\_\_\_

Artifacts (specify) \_\_\_\_\_

Pottery

Rim sherds \_\_\_\_\_

Clay pipe \_\_\_\_\_

Other (specify) \_\_\_\_\_

Ground Stone

Celt \_\_\_\_\_

Grooved Ax \_\_\_\_\_

Adz \_\_\_\_\_

Mortar \_\_\_\_\_

Pestle \_\_\_\_\_

Rubbing Stone \_\_\_\_\_

Other (specify) \_\_\_\_\_

Shell

Mollusc \_\_\_\_\_

Turtle \_\_\_\_\_

Body sherds \_\_\_\_\_

Remarks: Note presence of charcoal, fire-cracked rock, etc.

WESTERN MICHIGAN UNIVERSITY  
Department of Anthropology  
Artifact Count Record

Site Baraglia KBS-77-14 /20 AE 149

Classifier Joyce Tressler

Square Surface Collection

Today's Date 5/24/77

Level or  
Feature \_\_\_\_\_

Date Material  
Collected 5/20/77

Chipped Stone

Biface (describe)	points	<u>2</u>
	scraper	<u>1</u>
Uniface (describe)		<u>          </u>
Drill	T-Drill	<u>1</u>
Core		<u>          </u>
Other (specify)		<u>68</u>
	flakes & Chips	
Utilized Flakes		<u>6</u>
Weight		<u>          </u>

Ground Stone

Celt	<u>          </u>
Grooved Ax	<u>          </u>
Adz	<u>          </u>
Mortar	<u>          </u>
Pestle	<u>          </u>
Rubbing Stone	<u>          </u>
Other (specify)	<u>1</u>
	Hammerstone

Bone

Fragments	<u>1</u>
Artifacts (specify)	<u>          </u>

Shell

Mollusc	<u>          </u>
Turtle	<u>          </u>

Pottery

Rim sherds	<u>          </u>
Clay pipe	<u>          </u>
Other (specify)	<u>          </u>

Body sherds	<u>          </u>
-------------	-------------------

Remarks: Note presence of charcoal, fire-cracked rock, etc.

Firecracked rock (3 pieces)

WESTERN MICHIGAN UNIVERSITY  
Department of Anthropology  
Artifact Count Record

Hamilton Bayou  
Site KBS-77-15 /20 AE 150

Classifier Joyce Tressler

Square Surface Collection

Today's Date 5/24/77

Level or  
Feature \_\_\_\_\_

Date Material  
Collected 5/23/77

Chipped Stone

Ground Stone

Biface (describe) point scraper 1  
1

Celt \_\_\_\_\_

Uniface (describe) \_\_\_\_\_

Grooved Ax \_\_\_\_\_

Adz \_\_\_\_\_

Drill \_\_\_\_\_

Mortar \_\_\_\_\_

Core \_\_\_\_\_

Pestle \_\_\_\_\_

Other (specify) flakes scraper 6  
1

Rubbing Stone \_\_\_\_\_

Other (specify) \_\_\_\_\_

Utilized Flakes \_\_\_\_\_

Weight \_\_\_\_\_

Bone

Shell

Fragments tubular 1

Mollusc \_\_\_\_\_

Artifacts (specify) \_\_\_\_\_

Turtle \_\_\_\_\_

Pottery

Rim sherds \_\_\_\_\_

Body sherds \_\_\_\_\_

Clay pipe \_\_\_\_\_

Other (specify) \_\_\_\_\_

Remarks: Note presence of charcoal, fire-cracked rock, etc.

WESTERN MICHIGAN UNIVERSITY  
Department of Anthropology  
Artifact Count Record

Site Tucker KBS-77-16 /20 AE 151

Classifier Joyce Tressler

Square Surface Collection

Today's Date 5/24/77

Level or  
Feature \_\_\_\_\_

Date Material  
Collected 5/18/77

Chipped Stone

Ground Stone

Biface (describe) \_\_\_\_\_

Celt \_\_\_\_\_

Uniface (describe) \_\_\_\_\_

Grooved Ax \_\_\_\_\_

Drill \_\_\_\_\_

Adz \_\_\_\_\_

Core \_\_\_\_\_

Mortar \_\_\_\_\_

Other (specify) 10 total

Pestle \_\_\_\_\_

Block flakes 2  
chips 1, flakes 7

Rubbing Stone \_\_\_\_\_

Utilized Flakes \_\_\_\_\_

Other (specify) \_\_\_\_\_

Weight \_\_\_\_\_

Bone

Shell

Fragments bird tibia 1

Mollusc \_\_\_\_\_

Artifacts (specify) \_\_\_\_\_

Turtle \_\_\_\_\_

Pottery

Rim sherds \_\_\_\_\_

Body sherds \_\_\_\_\_

Clay pipe \_\_\_\_\_

Other (specify) \_\_\_\_\_

Remarks: Note presence of charcoal, fire-cracked rock, etc.

2 pieces historic ceramics -- (1)"flow blue", (1) crock  
1 piece fire-cracked rock

WESTERN MICHIGAN UNIVERSITY  
Department of Anthropology  
Artifact Count Record

Site Nyboer KBS-77-17 /20 AE 152

Classifier Robert Hutton

Square Surface Collection

Today's Date 5/24/77

Level or  
Feature \_\_\_\_\_

Date Material  
Collected 5/23/77

Chipped Stone

Ground Stone

Biface (describe) 1  
projectile point

Celt \_\_\_\_\_

Uniface (describe) \_\_\_\_\_

Grooved Ax \_\_\_\_\_

Drill \_\_\_\_\_

Adz \_\_\_\_\_

Core 1

Mortar \_\_\_\_\_

Other (specify) 12  
chippage

Pestle \_\_\_\_\_

Utilized Flakes \_\_\_\_\_

Rubbing Stone \_\_\_\_\_

Weight \_\_\_\_\_

Other (specify) \_\_\_\_\_

Bone

Shell

Fragments \_\_\_\_\_

Mollusc \_\_\_\_\_

Artifacts (specify) \_\_\_\_\_

Turtle \_\_\_\_\_

Pottery

Rim sherds \_\_\_\_\_

Body sherds \_\_\_\_\_

Clay pipe \_\_\_\_\_

Other (specify) \_\_\_\_\_

Remarks: Note presence of charcoal, fire-cracked rock, etc.



WESTERN MICHIGAN UNIVERSITY  
Department of Anthropology  
Artifact Count Record

Site Berens KBS-77-18/20 AE 153  
Square surface Collection  
Level or  
Feature \_\_\_\_\_

Classifier Robert Hutton  
Today's Date 5/24/77  
Date Material  
Collected 5/23/77

Chipped Stone

Ground Stone

Biface (describe) 2  
projectile point  
scraper  
Uniface (describe) \_\_\_\_\_  
  
Drill \_\_\_\_\_  
Core \_\_\_\_\_  
Other (specify) 15  
chippage  
Utilized Flakes \_\_\_\_\_  
Weight \_\_\_\_\_

Celt \_\_\_\_\_  
Grooved Ax \_\_\_\_\_  
Adz \_\_\_\_\_  
Mortar \_\_\_\_\_  
Pestle \_\_\_\_\_  
Rubbing Stone \_\_\_\_\_  
Other (specify) \_\_\_\_\_

Bone

Shell

Fragments \_\_\_\_\_  
Artifacts (specify) \_\_\_\_\_

Mollusc 1  
Turtle 3  
Other 7

Pottery

Rim sherds \_\_\_\_\_  
Clay pipe \_\_\_\_\_  
Other (specify) \_\_\_\_\_

Body sherds \_\_\_\_\_

Remarks: Note presence of charcoal, fire-cracked rock, etc.

WESTERN MICHIGAN UNIVERSITY  
Department of Anthropology  
Artifact Count Record

Site Bower Site KBS-77-19/20 AE 154

Classifier Jon Leader

Square Surface Survey

Today's Date 5/31/77

Level or  
Feature \_\_\_\_\_

Date Material  
Collected 5/19/77

Chipped Stone

Ground Stone

Biface (describe) 2  
see back (point & blank)

Celt \_\_\_\_\_

Uniface (describe) 2  
see back (scrapers)

Grooved Ax \_\_\_\_\_

Drill \_\_\_\_\_

Adz \_\_\_\_\_

Core 1

Mortar \_\_\_\_\_

Other (specify) 19  
chippage

Pestle \_\_\_\_\_

Utilized Flakes \_\_\_\_\_

Rubbing Stone \_\_\_\_\_

Weight \_\_\_\_\_

Other (specify) \_\_\_\_\_

Bone

Shell

Fragments \_\_\_\_\_

Mollusc \_\_\_\_\_

Artifacts (specify) \_\_\_\_\_

Turtle \_\_\_\_\_

Pottery

Rim sherds \_\_\_\_\_

Body sherds \_\_\_\_\_

Clay pipe \_\_\_\_\_

Other (specify) \_\_\_\_\_

Remarks: Note presence of charcoal, fire-cracked rock, etc.

one piece of fire cracked rock

Classifier Patti Mettler

Today's Date 5/31/77

Date Material  
Collected 5/19/77

## Ground Stone

Celt

### Grooved Ax

Adz

Mortar

Pestle

## Rubbing Stone

Other (specify) \_\_\_\_\_

Other (specify) \_\_\_\_\_

Other (specify) \_\_\_\_\_

## Shell

Mollusc 5

Turtle

Body sherds

Body sherds

Body sherds

Body sherds

1 piece Norwood chert

WESTERN MICHIGAN UNIVERSITY  
Department of Anthropology  
Artifact Count Record

Site VanderKolk KBS-77-21/20 AE 156

Classifier Jon Leader

Square Surface Collection

Today's Date 5/31/77

Level or  
Feature \_\_\_\_\_

Date Material  
Collected 5/25/77

Chipped Stone

Ground Stone

Biface (describe) 5  
scrapers

Celt \_\_\_\_\_

Uniface (describe) 4  
scrapers

Grooved Ax \_\_\_\_\_

Drill \_\_\_\_\_

Adz \_\_\_\_\_

Core \_\_\_\_\_

Mortar \_\_\_\_\_

Other (specify) 2  
chippage

Pestle \_\_\_\_\_

Utilized Flakes \_\_\_\_\_

Rubbing Stone \_\_\_\_\_

Weight \_\_\_\_\_

Other (specify) \_\_\_\_\_

Bone

Shell

Fragments \_\_\_\_\_

Mollusc 2

Artifacts (specify) \_\_\_\_\_

Turtle \_\_\_\_\_

Pottery

Rim sherds \_\_\_\_\_

Body sherds \_\_\_\_\_

Clay pipe \_\_\_\_\_

Other (specify) \_\_\_\_\_

Remarks: Note presence of charcoal, fire-cracked rock, etc.

Fire cracked rock - 2 pieces

WESTERN MICHIGAN UNIVERSITY  
Department of Anthropology  
Artifact Count Record

Site Schatte KBS-77-22/20 AE 157

Classifier Jon Leader

Square Surface Survey

Today's Date 5/31/77

Level or  
Feature \_\_\_\_\_

Date Material  
Collected 5/21/77

Chipped Stone

Ground Stone

Biface (describe) \_\_\_\_\_

Celt \_\_\_\_\_

Uniface (describe) 1

Grooved Ax \_\_\_\_\_

Adz \_\_\_\_\_

Drill \_\_\_\_\_

Mortar \_\_\_\_\_

Core 4

Pestle \_\_\_\_\_

Other (specify)  
chippage 17

Rubbing Stone \_\_\_\_\_

Utilized Flakes \_\_\_\_\_

Other (specify) \_\_\_\_\_

Weight \_\_\_\_\_

Bone

Shell

Fragments \_\_\_\_\_

Mollusc 4

Artifacts (specify) \_\_\_\_\_

Turtle \_\_\_\_\_

Pottery

Rim sherds \_\_\_\_\_

Body sherds \_\_\_\_\_

Clay pipe \_\_\_\_\_

Other (specify) \_\_\_\_\_

Remarks: Note presence of charcoal, fire-cracked rock, etc.

one bone fragment

WESTERN MICHIGAN UNIVERSITY  
Department of Anthropology  
Artifact Count Record

Site Sink Lake KBS-77-23/10 AE 158

Classifier Patti Mettler

Square Surface Collection

Today's Date 5/31/77

Level or  
Feature \_\_\_\_\_

Date Material  
Collected 5/25/77

Chipped Stone

Ground Stone

Biface (describe) \_\_\_\_\_

Celt \_\_\_\_\_

Uniface (describe) \_\_\_\_\_

Grooved Ax \_\_\_\_\_

Drill \_\_\_\_\_

Adz \_\_\_\_\_

Core \_\_\_\_\_

Mortar \_\_\_\_\_

Other (specify) 4  
chippage \_\_\_\_\_

Pestle \_\_\_\_\_

Rubbing Stone \_\_\_\_\_

Utilized Flakes \_\_\_\_\_

Other (specify) \_\_\_\_\_

Weight \_\_\_\_\_

Bone

Shell

Fragments 2 \_\_\_\_\_

Mollusc 5 \_\_\_\_\_

Artifacts (specify) \_\_\_\_\_

Turtle \_\_\_\_\_

Pottery

Rim sherds \_\_\_\_\_

Body sherds \_\_\_\_\_

Clay pipe \_\_\_\_\_

Other (specify) \_\_\_\_\_

Remarks: Note presence of charcoal, fire-cracked rock, etc.

WESTERN MICHIGAN UNIVERSITY  
Department of Anthropology  
Artifact Count Record

Site Hiscock KBS-77-24/20 AE 159

Classifier Joyce Tressler

Square Surface Collection

Today's Date 6/16/77

Level or  
Feature \_\_\_\_\_

Date Material  
Collected 5/26/77

Chipped Stone

Biface (describe) \_\_\_\_\_

Uniface (describe) 1  
thumbnail scraper

Drill \_\_\_\_\_

Core \_\_\_\_\_

Other (specify) 14  
chippage

Utilized Flakes 1

Weight \_\_\_\_\_

Bone

Fragments \_\_\_\_\_

Artifacts (specify) \_\_\_\_\_

Pottery

Rim sherds \_\_\_\_\_

Clay pipe \_\_\_\_\_

Other (specify) \_\_\_\_\_

Ground Stone

Celt \_\_\_\_\_

Grooved Ax \_\_\_\_\_

Adz \_\_\_\_\_

Mortar \_\_\_\_\_

Pestle \_\_\_\_\_

Rubbing Stone \_\_\_\_\_

Other (specify) \_\_\_\_\_

Shell

Mollusc \_\_\_\_\_

Turtle \_\_\_\_\_

Body sherds 1

Remarks: Note presence of charcoal, fire-cracked rock, etc.

WESTERN MICHIGAN UNIVERSITY  
Department of Anthropology  
Artifact Count Record

Site Eding Site KBS-77-25/20 AE 160

Classifier Patti Mettler

Square Surface Collection

Today's Date 5/31/77

Level or  
Feature \_\_\_\_\_

Date Material  
Collected 5/27/77

Chipped Stone

Ground Stone

Biface (describe) \_\_\_\_\_

Celt \_\_\_\_\_

Uniface (describe) \_\_\_\_\_

Grooved Ax \_\_\_\_\_

Drill \_\_\_\_\_

Adz \_\_\_\_\_

Core \_\_\_\_\_

Mortar \_\_\_\_\_

Other (specify) 33  
chippage

Pestle \_\_\_\_\_

Utilized Flakes \_\_\_\_\_

Rubbing Stone \_\_\_\_\_

Weight \_\_\_\_\_

Other (specify) \_\_\_\_\_

Bone

Shell

Fragments 2

Mollusc 2

Artifacts (specify) \_\_\_\_\_

Turtle \_\_\_\_\_

Pottery

Rim sherds \_\_\_\_\_

Body sherds \_\_\_\_\_

Clay pipe \_\_\_\_\_

Other (specify) \_\_\_\_\_

Remarks: Note presence of charcoal, fire-cracked rock, etc.

3 pieces fire cracked rock  
1 piece charcoal



WESTERN MICHIGAN UNIVERSITY  
Department of Anthropology  
Artifact Count Record

Site Jasper KBS-77-26/20 AE 161

Classifier Jon Leader

Square Surface Collection

Today's Date 5/31/77

Level or  
Feature \_\_\_\_\_

Date Material  
Collected 5/27/77

Chipped Stone

Ground Stone

Biface (describe) 1

Celt \_\_\_\_\_

Uniface (describe) \_\_\_\_\_

Grooved Ax \_\_\_\_\_

Drill \_\_\_\_\_

Adz \_\_\_\_\_

Core \_\_\_\_\_

Mortar \_\_\_\_\_

Other (specify) 13  
chippage

Pestle \_\_\_\_\_

Rubbing Stone \_\_\_\_\_

Utilized Flakes \_\_\_\_\_

Other (specify) \_\_\_\_\_

Weight \_\_\_\_\_

Bone

Shell

Fragments \_\_\_\_\_

Mollusc \_\_\_\_\_

Artifacts (specify) \_\_\_\_\_

Turtle \_\_\_\_\_

Pottery

Rim sherds \_\_\_\_\_

Body sherds \_\_\_\_\_

Clay pipe \_\_\_\_\_

Other (specify) \_\_\_\_\_

Remarks: Note presence of charcoal, fire-cracked rock, etc.

3 pieces fire cracked rock  
1 piece of fused glass

WESTERN MICHIGAN UNIVERSITY  
Department of Anthropology  
Artifact Count Record

Site Loli-Pup KBS-77-27/20 AE 162

Classifier Patti Mettler

Square Surface Collection

Today's Date 5/31/77

Level or  
Feature \_\_\_\_\_

Date Material  
Collected 5/27/77

Chipped Stone

Ground Stone

Biface (describe) \_\_\_\_\_

Celt \_\_\_\_\_

Uniface (describe) \_\_\_\_\_

Grooved Ax \_\_\_\_\_

Drill \_\_\_\_\_

Adz \_\_\_\_\_

Core \_\_\_\_\_

Mortar \_\_\_\_\_

Other (specify) 17  
chippage \_\_\_\_\_

Pestle \_\_\_\_\_

Rubbing Stone \_\_\_\_\_

Utilized Flakes \_\_\_\_\_

Other (specify) \_\_\_\_\_

Weight \_\_\_\_\_

Bone

Shell

Fragments \_\_\_\_\_

Mollusc \_\_\_\_\_

Artifacts (specify) \_\_\_\_\_

Turtle \_\_\_\_\_

Pottery

Rim sherds \_\_\_\_\_

Body sherds \_\_\_\_\_

Clay pipe \_\_\_\_\_

Other (specify) \_\_\_\_\_

Remarks: Note presence of charcoal, fire-cracked rock, etc.

WESTERN MICHIGAN UNIVERSITY  
Department of Anthropology  
Artifact Count Record

Site Hamilton (Big Ridge)  
KBS-77-28 /20 AE 163

Classifier Sroda

Square Surface Collection

Today's Date 6/6/77

Level or  
Feature \_\_\_\_\_

Date Material  
Collected 6/1/77

Chipped Stone

Biface (describe) 4  
projectile points 2  
knives 2  
Uniface (describe) 1  
  
Drill \_\_\_\_\_  
Core \_\_\_\_\_  
quartzite flakes - 2  
Other (specify) chert detritis - 34  
36  
Utilized Flakes \_\_\_\_\_  
Weight \_\_\_\_\_

Ground Stone

Celt \_\_\_\_\_  
Grooved Ax \_\_\_\_\_  
Adz \_\_\_\_\_  
Mortar \_\_\_\_\_  
Pestle \_\_\_\_\_  
Rubbing Stone \_\_\_\_\_  
Other (specify) \_\_\_\_\_

Bone

Fragments (long) 1  
Artifacts (specify) \_\_\_\_\_

Shell

Mollusc \_\_\_\_\_  
Turtle \_\_\_\_\_

Pottery

Rim sherds \_\_\_\_\_  
Clay pipe \_\_\_\_\_  
Other (specify) Historic 2

Body sherds \_\_\_\_\_

Remarks: Note presence of charcoal, fire-cracked rock, etc.

1 fire-cracked rock

WESTERN MICHIGAN UNIVERSITY  
Department of Anthropology  
Artifact Count Record

Site Kempker KRS-77-29/20 AE 164

Classifier Sroda

Square Surface Collection

Today's Date 6/6/77

Level or  
Feature \_\_\_\_\_

Date Material  
Collected ?

Chipped Stone

Ground Stone

Biface (describe) 1  
projectile point

Celt \_\_\_\_\_

Uniface (describe) \_\_\_\_\_

Grooved Ax \_\_\_\_\_

Drill \_\_\_\_\_

Adz \_\_\_\_\_

Core \_\_\_\_\_

Mortar \_\_\_\_\_

Other (specify) chert detritis 23

Pestle \_\_\_\_\_

Rubbing Stone \_\_\_\_\_

Utilized Flakes \_\_\_\_\_

Other (specify) \_\_\_\_\_

Weight \_\_\_\_\_

Bone

Shell

Fragments \_\_\_\_\_

Mollusc \_\_\_\_\_

Artifacts (specify) \_\_\_\_\_

Turtle \_\_\_\_\_

Pottery

Rim sherds \_\_\_\_\_

Body sherds \_\_\_\_\_

Clay pipe \_\_\_\_\_

Other (specify) \_\_\_\_\_

Remarks: Note presence of charcoal, fire-cracked rock, etc.

2 fire-cracked rocks

WESTERN MICHIGAN UNIVERSITY  
Department of Anthropology  
Artifact Count Record

Site Mud Ridge KBS-77-30 /20 AE 165

Classifier Joyce Tressler

Square Surface Collection

Today's Date 6/6/77

Level or  
Feature \_\_\_\_\_

Date Material  
Collected 6/1/77

Chipped Stone

Ground Stone

Biface (describe) \_\_\_\_\_

Celt \_\_\_\_\_

Uniface (describe) \_\_\_\_\_

Grooved Ax \_\_\_\_\_

Drill \_\_\_\_\_

Adz \_\_\_\_\_

Core \_\_\_\_\_

Mortar \_\_\_\_\_

Other (specify) Flakes - 13  
Chips - 31

44

Pestle \_\_\_\_\_

Rubbing Stone 1

Utilized Flakes \_\_\_\_\_

Other (specify) \_\_\_\_\_

Weight \_\_\_\_\_

Bone

Shell

Fragments 1

Mollusc \_\_\_\_\_

Artifacts (specify) \_\_\_\_\_

Turtle \_\_\_\_\_

Pottery

Rim sherds \_\_\_\_\_

Body sherds \_\_\_\_\_

Clay pipe \_\_\_\_\_

Other (specify) \_\_\_\_\_

Remarks: Note presence of charcoal, fire-cracked rock, etc.

1 fire-cracked rock

WESTERN MICHIGAN UNIVERSITY  
Department of Anthropology  
Artifact Count Record

Site Julius KBS-77-31/20 AE 166

Classifier Sroda

Square Surface Collection

Today's Date 6/6/77

Level or  
Feature \_\_\_\_\_

Date Material 6/1/77  
Collected \_\_\_\_\_

Chipped Stone

Ground Stone

Biface (describe) 1  
projectile point

Celt \_\_\_\_\_

Uniface (describe) \_\_\_\_\_

Grooved Ax \_\_\_\_\_

Adz \_\_\_\_\_

Drill \_\_\_\_\_

Mortar \_\_\_\_\_

Core 2

Pestle \_\_\_\_\_

Other (specify) chert  
detritis

Rubbing Stone \_\_\_\_\_

Other (specify) \_\_\_\_\_

Utilized Flakes \_\_\_\_\_

Weight \_\_\_\_\_

Bone

Shell

Fragments \_\_\_\_\_

Mollusc \_\_\_\_\_

Artifacts (specify) \_\_\_\_\_

Turtle \_\_\_\_\_

Pottery

Rim sherds \_\_\_\_\_

Body sherds \_\_\_\_\_

Clay pipe \_\_\_\_\_

Other (specify) \_\_\_\_\_

Remarks: Note presence of charcoal, fire-cracked rock, etc.

1 fire-cracked rock

WESTERN MICHIGAN UNIVERSITY  
Department of Anthropology  
Artifact Count Record

Sand Ridge "A"  
Site KBS-77-32 /20 AE 167

Classifier Joyce Tressler

Square Surface Collection

Today's Date 6/6/77

Level or  
Feature \_\_\_\_\_

Date Material 6/1/77  
Collected \_\_\_\_\_

Chipped Stone

Ground Stone

Biface (describe) 1

base of point

Celt \_\_\_\_\_

Grooved Ax \_\_\_\_\_

Uniface (describe) \_\_\_\_\_

Adz \_\_\_\_\_

Drill \_\_\_\_\_

Mortar \_\_\_\_\_

Core \_\_\_\_\_

Pestle \_\_\_\_\_

Other (specify) flake 2

Rubbing Stone \_\_\_\_\_

Utilized Flakes \_\_\_\_\_

Other (specify) \_\_\_\_\_

Weight \_\_\_\_\_

Bone

Shell

Fragments \_\_\_\_\_

Mollusc 1

Artifacts (specify) \_\_\_\_\_

Turtle \_\_\_\_\_

Pottery

Rim sherds \_\_\_\_\_

Body sherds \_\_\_\_\_

Clay pipe \_\_\_\_\_

Other (specify) \_\_\_\_\_

Remarks: Note presence of charcoal, fire-cracked rock, etc.

WESTERN MICHIGAN UNIVERSITY  
Department of Anthropology  
Artifact Count Record

Site Sandy Ridge "B"  
KBS-77-33 /20 AE 168

Classifier Joyce Tressler

Square Surface Collection

Today's Date 6-6-77

Level or  
Feature \_\_\_\_\_

Date Material  
Collected 6-2-77

Chipped Stone

Ground Stone

Biface (describe) broken point 1

Celt \_\_\_\_\_

Uniface (describe) \_\_\_\_\_

Grooved Ax \_\_\_\_\_

Drill \_\_\_\_\_

Adz \_\_\_\_\_

Core \_\_\_\_\_

Mortar \_\_\_\_\_

Other (specify) \_\_\_\_\_

Pestle \_\_\_\_\_

Utilized Flakes \_\_\_\_\_

Rubbing Stone \_\_\_\_\_

Weight \_\_\_\_\_

Other (specify) \_\_\_\_\_

Bone

Shell

Fragments long bone 1

Mollusc \_\_\_\_\_

Artifacts (specify) \_\_\_\_\_

Turtle \_\_\_\_\_

Pottery

Rim sherds \_\_\_\_\_

Body sherds \_\_\_\_\_

Clay pipe \_\_\_\_\_

Other (specify) \_\_\_\_\_

Remarks: Note presence of charcoal, fire-cracked rock, etc.

1 piece wood, partially burnt  
1 fire-cracked rock



WESTERN MICHIGAN UNIVERSITY  
Department of Anthropology  
Artifact Count Record

Site Spring Brook KBS-77-34 /20 AE 169 Classifier Sroda

Square Surface Collection Today's Date 6-6-77

Level or  
Feature \_\_\_\_\_ Date Material  
Collected ?

Chipped Stone

Ground Stone

Biface (describe) 1  
projectile point

Celt \_\_\_\_\_

Uniface (describe) \_\_\_\_\_

Grooved Ax \_\_\_\_\_

Drill \_\_\_\_\_

Adz \_\_\_\_\_

Core \_\_\_\_\_

Mortar \_\_\_\_\_

Other (specify) chert detritis 3

Pestle \_\_\_\_\_

Rubbing Stone \_\_\_\_\_

Utilized Flakes \_\_\_\_\_

Other (specify) \_\_\_\_\_

Weight \_\_\_\_\_

Bone

Shell

Fragments long 1

Mollusc 1

Artifacts (specify) \_\_\_\_\_

Turtle \_\_\_\_\_

Pottery

Rim sherds \_\_\_\_\_

Body sherds \_\_\_\_\_

Clay pipe \_\_\_\_\_

Other (specify) Historic 3

Remarks: Note presence of charcoal, fire-cracked rock, etc.

WESTERN MICHIGAN UNIVERSITY  
Department of Anthropology  
Artifact Count Record

Site Tributary "A" KBS-77-35 /20 AE 170 Classifier Joyce Tressler

Square Surface Collection Today's Date 6/6/77

Level or Feature \_\_\_\_\_ Date Material Collected 6/2/77

Chipped Stone

Biface (describe) \_\_\_\_\_

Uniface (describe) \_\_\_\_\_

Drill \_\_\_\_\_

Core \_\_\_\_\_

Other (specify) Flakes 11

Utilized Flakes i

Weight \_\_\_\_\_

Ground Stone

Celt \_\_\_\_\_

Grooved Ax \_\_\_\_\_

Adz \_\_\_\_\_

Mortar \_\_\_\_\_

Pestle \_\_\_\_\_

Rubbing Stone \_\_\_\_\_

Other (specify) \_\_\_\_\_

Bone

Fragments \_\_\_\_\_

Artifacts (specify) \_\_\_\_\_

Shell

Mollusc \_\_\_\_\_

Turtle \_\_\_\_\_

Pottery

Rim sherds \_\_\_\_\_

Clay pipe \_\_\_\_\_

Other (specify) \_\_\_\_\_

Body sherds \_\_\_\_\_

Remarks: Note presence of charcoal, fire-cracked rock, etc.

WESTERN MICHIGAN UNIVERSITY  
Department of Anthropology  
Artifact Count Record

Site Tributary "B" KBS-77-36/20 AE 171

Classifier Joyce Tressler

Square Surface Collection

Today's Date 6/6/77

Level or  
Feature \_\_\_\_\_

Date Material  
Collected 6/2/77

Chipped Stone

Biface (describe) \_\_\_\_\_

Uniface (describe) \_\_\_\_\_

Drill \_\_\_\_\_

Core \_\_\_\_\_

Other (specify) flakes - 5  
chips - 3 8

Utilized Flakes \_\_\_\_\_

Weight \_\_\_\_\_

Bone

Fragments \_\_\_\_\_

Artifacts (specify) \_\_\_\_\_

Pottery

Rim sherds \_\_\_\_\_

Clay pipe \_\_\_\_\_

Other (specify) \_\_\_\_\_

Ground Stone

Celt \_\_\_\_\_

Grooved Ax \_\_\_\_\_

Adz \_\_\_\_\_

Mortar \_\_\_\_\_

Pestle \_\_\_\_\_

Rubbing Stone \_\_\_\_\_

Other (specify) \_\_\_\_\_

Shell

Mollusc \_\_\_\_\_

Turtle \_\_\_\_\_

Body sherds \_\_\_\_\_

Remarks: Note presence of charcoal, fire-cracked rock, etc.

WESTERN MICHIGAN UNIVERSITY  
Department of Anthropology  
Artifact Count Record

Site Berens Point KBS-77-37 /20 AE 172

Classifier Joyce Tressler

Square Surface Collection

Today's Date 6/6/77

Level or  
Feature \_\_\_\_\_

Date Material  
Collected 6/2/77

Chipped Stone

Biface (describe) scraper? 1

Uniface (describe) \_\_\_\_\_

Drill \_\_\_\_\_

Core \_\_\_\_\_

Other (specify) flake 1

Utilized Flakes 1

Weight \_\_\_\_\_

Bone

Fragments 1

Artifacts (specify) \_\_\_\_\_

Pottery

Rim sherds \_\_\_\_\_

Clay pipe \_\_\_\_\_

Other (specify) \_\_\_\_\_

Ground Stone

Celt \_\_\_\_\_

Grooved Ax \_\_\_\_\_

Adz \_\_\_\_\_

Mortar \_\_\_\_\_

Pestle \_\_\_\_\_

Rubbing Stone \_\_\_\_\_

Other (specify) \_\_\_\_\_

Shell

Mollusc \_\_\_\_\_

Turtle \_\_\_\_\_

Body sherds \_\_\_\_\_

Remarks: Note presence of charcoal, fire-cracked rock, etc.

WESTERN MICHIGAN UNIVERSITY  
Department of Anthropology  
Artifact Count Record

Site Klingenburg KBS-77-38 /20 AE 173 Classifier Sroda

Square Surface Collection Today's Date 6/6/77

Level or Feature \_\_\_\_\_ Date Material Collected 6/2/77

Chipped Stone

Biface (describe) \_\_\_\_\_

Uniface (describe) \_\_\_\_\_

Drill \_\_\_\_\_

Core \_\_\_\_\_

Other (specify) chert 7  
detritis

Utilized Flakes \_\_\_\_\_

Weight \_\_\_\_\_

Bone

Fragments 8

Artifacts (specify) \_\_\_\_\_

Pottery

Rim sherds \_\_\_\_\_

Clay pipe \_\_\_\_\_

Other (specify) \_\_\_\_\_

Ground Stone

Celt \_\_\_\_\_

Grooved Ax \_\_\_\_\_

Adz \_\_\_\_\_

Mortar \_\_\_\_\_

Pestle \_\_\_\_\_

Rubbing Stone \_\_\_\_\_

Other (specify) \_\_\_\_\_

Shell

Mollusc \_\_\_\_\_

Turtle \_\_\_\_\_

Remarks: Note presence of charcoal, fire-cracked rock, etc.

1 fire-cracked rock

WESTERN MICHIGAN UNIVERSITY  
Department of Anthropology  
Artifact Count Record

Site Schotten KBS-77-39 / 20 AE 174

Classifier Joyce Tressler

Square Surface Collection

Today's Date 6/6/77

Level or  
Feature \_\_\_\_\_

Date Material  
Collected 6/2/77

Chipped Stone

Ground Stone

Biface (describe) \_\_\_\_\_

Celt \_\_\_\_\_

Uniface (describe) point? 1

Grooved Ax \_\_\_\_\_

Drill \_\_\_\_\_

Adz \_\_\_\_\_

Core \_\_\_\_\_

Mortar \_\_\_\_\_

Other (specify) chippage -4  
flake - 1 5

Pestle \_\_\_\_\_

Rubbing Stone \_\_\_\_\_

Utilized Flakes \_\_\_\_\_

Other (specify) \_\_\_\_\_

Weight \_\_\_\_\_

Bone

Shell

Fragments \_\_\_\_\_

Mollusc \_\_\_\_\_

Artifacts (specify) \_\_\_\_\_

Turtle \_\_\_\_\_

Pottery

Rim sherds \_\_\_\_\_

Body sherds \_\_\_\_\_

Clay pipe \_\_\_\_\_

Other (specify) \_\_\_\_\_

Remarks: Note presence of charcoal, fire-cracked rock, etc.

WESTERN MICHIGAN UNIVERSITY  
Department of Anthropology  
Artifact Count Record

Site Emerson KBS-77-40 /20 AE 175

Classifier Sroda

Square Surface Collection

Today's Date 6/6/77

Level or  
Feature \_\_\_\_\_

Date Material  
Collected 6/2/77

Chipped Stone

Ground Stone

Biface (describe) 1  
projectile point frag.

Celt \_\_\_\_\_

Uniface (describe) \_\_\_\_\_

Grooved Ax \_\_\_\_\_

Drill \_\_\_\_\_

Adz \_\_\_\_\_

Core \_\_\_\_\_

Mortar \_\_\_\_\_

Other (specify) chert detritis 3

Pestle \_\_\_\_\_

Rubbing Stone \_\_\_\_\_

Utilized Flakes \_\_\_\_\_

Other (specify) \_\_\_\_\_

Weight \_\_\_\_\_

Bone

Shell

Fragments \_\_\_\_\_

Mollusc \_\_\_\_\_

Artifacts (specify) \_\_\_\_\_

Turtle \_\_\_\_\_

Pottery

Rim sherds \_\_\_\_\_

Body sherds \_\_\_\_\_

Clay pipe \_\_\_\_\_

Other (specify) \_\_\_\_\_

Remarks: Note presence of charcoal, fire-cracked rock, etc.

WESTERN MICHIGAN UNIVERSITY  
Department of Anthropology  
Artifact Count Record

Site Rigterink KBS-77-41 /20 AE-176

Classifier Luis Uribe

Square Surface Survey

Today's Date 6/16/77

Level or  
Feature \_\_\_\_\_

Date Material  
Collected 6/7/77

Chipped Stone

Ground Stone

Biface (describe) Point 1

Celt \_\_\_\_\_

Uniface (describe) \_\_\_\_\_

Grooved Ax \_\_\_\_\_

Drill \_\_\_\_\_

Adz \_\_\_\_\_

Core \_\_\_\_\_

Mortar \_\_\_\_\_

Other (specify) Unutilized flakes 5

Pestle \_\_\_\_\_

Rubbing Stone \_\_\_\_\_

Utilized Flakes \_\_\_\_\_

Other (specify) \_\_\_\_\_

Weight \_\_\_\_\_

Bone

Shell

Fragments \_\_\_\_\_

Mollusc \_\_\_\_\_

Artifacts (specify) \_\_\_\_\_

Turtle \_\_\_\_\_

Pottery

Rim sherds \_\_\_\_\_

Body sherds \_\_\_\_\_

Clay pipe \_\_\_\_\_

Other (specify) \_\_\_\_\_

Remarks: Note presence of charcoal, fire-cracked rock, etc.



WESTERN MICHIGAN UNIVERSITY  
Department of Anthropology  
Artifact Count Record

Site Albers KBS-77-42/20 AE 177

Classifier Don Weston

Square Surface Collection

Today's Date 6/7/77

Level or  
Feature \_\_\_\_\_

Date Material  
Collected 6/7/77

Chipped Stone

Ground Stone

Biface (describe) 1  
thumbnail scraper

Celt \_\_\_\_\_

Uniface (describe) \_\_\_\_\_

Grooved Ax \_\_\_\_\_

Adz \_\_\_\_\_

Drill \_\_\_\_\_

Mortar \_\_\_\_\_

Core \_\_\_\_\_

Pestle \_\_\_\_\_

Other (specify) 2  
blocky flakes

Rubbing Stone \_\_\_\_\_

Other (specify) \_\_\_\_\_

Utilized Flakes \_\_\_\_\_

Weight \_\_\_\_\_

Bone

Shell

Fragments \_\_\_\_\_

Mollusc \_\_\_\_\_

Artifacts (specify) \_\_\_\_\_

Turtle \_\_\_\_\_

Pottery

Rim sherds \_\_\_\_\_

Body sherds \_\_\_\_\_

Clay pipe \_\_\_\_\_

Other (specify) \_\_\_\_\_

Remarks: Note presence of charcoal, fire-cracked rock, etc.

WESTERN MICHIGAN UNIVERSITY  
Department of Anthropology  
Artifact Count Record

Site C & O Blowout KBS-77-43 /20 AE 178

Classifier Joyce Tressler

Square Surface Collection

Today's Date 6/16/77

Level or  
Feature \_\_\_\_\_

Date Material  
Collected 6/7/77

Chipped Stone

Biface (describe) \_\_\_\_\_

Uniface (describe) \_\_\_\_\_

Drill \_\_\_\_\_

Core \_\_\_\_\_

Other (specify) Chippage 11

Utilized Flakes \_\_\_\_\_

Weight \_\_\_\_\_

Ground Stone

Celt \_\_\_\_\_

Grooved Ax \_\_\_\_\_

Adz \_\_\_\_\_

Mortar \_\_\_\_\_

Pestle \_\_\_\_\_

Rubbing Stone \_\_\_\_\_

Other (specify) \_\_\_\_\_

Bone

Fragments \_\_\_\_\_

Artifacts (specify) \_\_\_\_\_

Shell

Mollusc \_\_\_\_\_

Turtle \_\_\_\_\_

1

Pottery

Rim sherds \_\_\_\_\_

Clay pipe \_\_\_\_\_

Other (specify) \_\_\_\_\_

Body sherds \_\_\_\_\_

Remarks: Note presence of charcoal, fire-cracked rock, etc.

5 pieces historic ceramics

WESTERN MICHIGAN UNIVERSITY  
Department of Anthropology  
Artifact Count Record

Site Palmer Bayou KBS-77-44 /20 AE 179 Classifier Kelcey Dodds

Square Surface Collection Today's Date 6/8/77

Level or  
Feature \_\_\_\_\_ Date Material  
Collected 6/7/77

Chipped Stone

Ground Stone

Biface (describe) \_\_\_\_\_

Celt \_\_\_\_\_

Uniface (describe) \_\_\_\_\_

Grooved Ax \_\_\_\_\_

Drill \_\_\_\_\_

Adz \_\_\_\_\_

Core \_\_\_\_\_

Mortar \_\_\_\_\_

Other (specify) chert 4

Pestle \_\_\_\_\_

Rubbing Stone \_\_\_\_\_

Utilized Flakes 8

Other (specify) \_\_\_\_\_

Weight unutilized flakes 3

Bone

Shell

Fragments \_\_\_\_\_

Mollusc \_\_\_\_\_

Artifacts (specify) \_\_\_\_\_

Turtle \_\_\_\_\_

Pottery

Rim sherds \_\_\_\_\_

Body sherds \_\_\_\_\_

Clay pipe \_\_\_\_\_

Other (specify) \_\_\_\_\_

Remarks: Note presence of charcoal, fire-cracked rock, etc.

WESTERN MICHIGAN UNIVERSITY  
Department of Anthropology  
Artifact Count Record

Site Nevenzel KBS-77-45 /20 AE 180

Classifier Kelcey Dodds

Square Surface Collection

Today's Date 6/8/ 77

Level or  
Feature \_\_\_\_\_

Date Material  
Collected 6/7/77

Chipped Stone

Ground Stone

Biface (describe) \_\_\_\_\_

Celt \_\_\_\_\_

Uniface (describe) \_\_\_\_\_

Grooved Ax \_\_\_\_\_

Drill \_\_\_\_\_

Adz \_\_\_\_\_

Core \_\_\_\_\_

Mortar \_\_\_\_\_

Other (specify) chert 10

Pestle \_\_\_\_\_

Rubbing Stone \_\_\_\_\_

Utilized Flakes 5

Other (specify) \_\_\_\_\_

~~Weight~~ unutilized flakes 21

Bone

Shell

Fragments \_\_\_\_\_

Mollusc \_\_\_\_\_

Artifacts (specify) \_\_\_\_\_

Turtle \_\_\_\_\_

Pottery

Rim sherds \_\_\_\_\_

Body sherds \_\_\_\_\_

Clay pipe \_\_\_\_\_

Other (specify) \_\_\_\_\_

Remarks: Note presence of charcoal, fire-cracked rock, etc.

WESTERN MICHIGAN UNIVERSITY  
Department of Anthropology  
Artifact Count Record

Site Van Voord KBS-77-46 /20 AE 181

Classifier Kelcey Dodds

Square Surface Collection

Today's Date 6/8/77

Level or  
Feature \_\_\_\_\_

Date Material  
Collected 6/7/77

Chipped Stone

Biface (describe) purpleish, 1  
broken  
point

Uniface (describe) \_\_\_\_\_

Drill \_\_\_\_\_

Core \_\_\_\_\_

Other (specify) \_\_\_\_\_

Utilized Flakes \_\_\_\_\_

Weight \_\_\_\_\_

Bone

Fragments \_\_\_\_\_

Artifacts (specify) \_\_\_\_\_

Pottery

Rim sherds \_\_\_\_\_

Clay pipe \_\_\_\_\_

Other (specify) \_\_\_\_\_

Ground Stone

Celt \_\_\_\_\_

Grooved Ax \_\_\_\_\_

Adz \_\_\_\_\_

Mortar \_\_\_\_\_

Pestle \_\_\_\_\_

Rubbing Stone \_\_\_\_\_

Other (specify) \_\_\_\_\_

Shell

Mollusc \_\_\_\_\_

Turtle \_\_\_\_\_

Remarks: Note presence of charcoal, fire-cracked rock, etc.

WESTERN MICHIGAN UNIVERSITY  
Department of Anthropology  
Artifact Count Record

Site Towers KBS-77-47 /20 AE 182

Classifier Joyce Tressler

Square Surface Collection

Today's Date 6/16/77

Level or  
Feature \_\_\_\_\_

Date Material  
Collected ?

Chipped Stone

Ground Stone

Biface (describe) 1

Celt \_\_\_\_\_

Uniface (describe) \_\_\_\_\_

Grooved Ax \_\_\_\_\_

Drill \_\_\_\_\_

Adz \_\_\_\_\_

Core \_\_\_\_\_

Mortar \_\_\_\_\_

Other (specify) \_\_\_\_\_

Pestle \_\_\_\_\_

Utilized Flakes \_\_\_\_\_

Rubbing Stone \_\_\_\_\_

Weight \_\_\_\_\_

Other (specify) \_\_\_\_\_

Bone

Shell

Fragments \_\_\_\_\_

Mollusc \_\_\_\_\_

Artifacts (specify) \_\_\_\_\_

Turtle \_\_\_\_\_

Pottery

Rim sherds \_\_\_\_\_

Body sherds \_\_\_\_\_

Clay pipe \_\_\_\_\_

Other (specify) \_\_\_\_\_

Remarks: Note presence of charcoal, fire-cracked rock, etc.

WESTERN MICHIGAN UNIVERSITY  
Department of Anthropology  
Artifact Count Record

Site Jerome KBS-77-48 /20 AE 183

Classifier Jon Leader

Square Surface Collection

Today's Date 6/16/77

Level or  
Feature \_\_\_\_\_

Date Material  
Collected 6/8/77

Chipped Stone

Biface (describe) \_\_\_\_\_

Uniface (describe) \_\_\_\_\_

Drill \_\_\_\_\_

Core \_\_\_\_\_

Other (specify) chippage 6

Utilized Flakes \_\_\_\_\_

Weight \_\_\_\_\_

Bone

Fragments 1

Artifacts (specify) \_\_\_\_\_

Pottery

Rim sherds \_\_\_\_\_

Clay pipe \_\_\_\_\_

Other (specify) \_\_\_\_\_

Ground Stone

Celt \_\_\_\_\_

Grooved Ax \_\_\_\_\_

Adz \_\_\_\_\_

Mortar \_\_\_\_\_

Pestle \_\_\_\_\_

Rubbing Stone \_\_\_\_\_

Other (specify) \_\_\_\_\_

Shell

Mollusc 1

Turtle \_\_\_\_\_

Remarks: Note presence of charcoal, fire-cracked rock, etc.

2 pieces fire-cracked rock

WESTERN MICHIGAN UNIVERSITY  
Department of Anthropology  
Artifact Count Record

Site Schaap KBS-77-49 /20 AE 184

Classifier Jon Leader

Square Surface Collection

Today's Date 6/16/77

Level or  
Feature \_\_\_\_\_

Date Material  
Collected 6/8/77

Chipped Stone

Biface (describe) \_\_\_\_\_

Uniface (describe) 1

Drill \_\_\_\_\_

Core \_\_\_\_\_

Other (specify) 1  
Decortication flake

Utilized Flakes 1

Weight \_\_\_\_\_

Bone

Fragments 1

Artifacts (specify) \_\_\_\_\_

Pottery

Rim sherds \_\_\_\_\_

Clay pipe \_\_\_\_\_

Other (specify) \_\_\_\_\_

Ground Stone

Celt \_\_\_\_\_

Grooved Ax \_\_\_\_\_

Adz \_\_\_\_\_

Mortar \_\_\_\_\_

Pestle \_\_\_\_\_

Rubbing Stone \_\_\_\_\_

Other (specify) 1  
Pecked stone

Shell

Mollusc \_\_\_\_\_

Turtle \_\_\_\_\_

Body sherds \_\_\_\_\_

Remarks: Note presence of charcoal, fire-cracked rock, etc.



WESTERN MICHIGAN UNIVERSITY  
Department of Anthropology  
Artifact Count Record

Site Schaap Firepits KBS-77-50/20 AE 185

Classifier Don Weston

Square Surface Collection

Today's Date 6/10/77

Level or  
Feature \_\_\_\_\_

Date Material 6/10/77  
Collected \_\_\_\_\_

Chipped Stone

Biface (describe) \_\_\_\_\_

Uniface (describe) \_\_\_\_\_

Drill \_\_\_\_\_

Core \_\_\_\_\_

Other (specify) \_\_\_\_\_

☐ Utilized Flakes \_\_\_\_\_

Weight \_\_\_\_\_

Bone

Fragments \_\_\_\_\_

Artifacts (specify) \_\_\_\_\_

Pottery

Rim sherds \_\_\_\_\_

Clay pipe \_\_\_\_\_

Other (specify) \_\_\_\_\_

Ground Stone

Celt \_\_\_\_\_

Grooved Ax \_\_\_\_\_

Adz \_\_\_\_\_

Mortar \_\_\_\_\_

Pestle \_\_\_\_\_

Rubbing Stone \_\_\_\_\_

Other (specify) \_\_\_\_\_

Shell

Mollusc \_\_\_\_\_

Turtle \_\_\_\_\_

Body sherds \_\_\_\_\_

Remarks: Note presence of charcoal, fire-cracked rock, etc.

Numerous fire-cracked rock on surface not collected

WESTERN MICHIGAN UNIVERSITY  
Department of Anthropology  
Artifact Count Record

Site Schaap Mound KBS-77-51/20 AE 186

Classifier Don Weston

Square Surface Collection

Today's Date 6/18/77

Level or  
Feature \_\_\_\_\_

Date Material  
Collected 6/18/77

Chipped Stone

Ground Stone

Biface (describe) \_\_\_\_\_

Celt \_\_\_\_\_

Uniface (describe) \_\_\_\_\_

Grooved Ax \_\_\_\_\_

Drill \_\_\_\_\_

Adz \_\_\_\_\_

Core \_\_\_\_\_

Mortar \_\_\_\_\_

Other (specify) \_\_\_\_\_

Pestle \_\_\_\_\_

Rubbing Stone \_\_\_\_\_

Utilized Flakes \_\_\_\_\_

Other (specify) \_\_\_\_\_

Weight \_\_\_\_\_

Bone

Shell

Fragments \_\_\_\_\_

Mollusc \_\_\_\_\_

Artifacts (specify) \_\_\_\_\_

Turtle \_\_\_\_\_

Pottery

Rim sherds \_\_\_\_\_

Body sherds \_\_\_\_\_

Clay pipe \_\_\_\_\_

Other (specify) \_\_\_\_\_

Remarks: Note presence of charcoal, fire-cracked rock, etc.

No surface collection made - mound in woods

WESTERN MICHIGAN UNIVERSITY  
Department of Anthropology  
Artifact Count Record

Site Jerry KBS-77-52 /20 AE 187

Classifier J. Tressler

Square Surface Collection

Today's Date 6/16/77

Level or  
Feature \_\_\_\_\_

Date Material  
Collected 6/10/77

Chipped Stone

Ground Stone

Biface (describe) \_\_\_\_\_

Celt \_\_\_\_\_

Uniface (describe) \_\_\_\_\_

Grooved Ax \_\_\_\_\_

Drill \_\_\_\_\_

Adz \_\_\_\_\_

Core \_\_\_\_\_

Mortar \_\_\_\_\_

Other (specify) Chippage 95

Pestle \_\_\_\_\_

Utilized Flakes \_\_\_\_\_

Rubbing Stone \_\_\_\_\_

Weight \_\_\_\_\_

Other (specify) \_\_\_\_\_

Bone

Shell

Fragments 2

Mollusc 2

Artifacts (specify) \_\_\_\_\_

Turtle \_\_\_\_\_

Pottery

Rim sherds \_\_\_\_\_

Body sherds \_\_\_\_\_

Clay pipe \_\_\_\_\_

Other (specify) \_\_\_\_\_

Remarks: Note presence of charcoal, fire-cracked rock, etc.

Historic -- 2 porcelain, 1 button, 1 piece glass

2 fire-cracked rocks

2 pieces wood

WESTERN MICHIGAN UNIVERSITY  
Department of Anthropology  
Artifact Count Record

Site Austin . KBS-77-53 /20 AE 188

Classifier Joyce Tressler

Square Surface Collection

Today's Date 6/16/77

Level or  
Feature \_\_\_\_\_

Date Material  
Collected 6/9/77

Chipped Stone

Ground Stone

Biface (describe) \_\_\_\_\_

Celt \_\_\_\_\_

Uniface (describe) \_\_\_\_\_

Grooved Ax \_\_\_\_\_

Adz \_\_\_\_\_

Drill \_\_\_\_\_

Mortar \_\_\_\_\_

Core \_\_\_\_\_

Pestle \_\_\_\_\_

Other (specify) Chippage 7

Rubbing Stone \_\_\_\_\_

Other (specify) \_\_\_\_\_

Utilized Flakes \_\_\_\_\_

Weight \_\_\_\_\_

Bone

Shell

Fragments 1

Mollusc \_\_\_\_\_

Artifacts (specify) \_\_\_\_\_

Turtle \_\_\_\_\_

Pottery

Rim sherds \_\_\_\_\_

Body sherds \_\_\_\_\_

Clay pipe \_\_\_\_\_

Other (specify) \_\_\_\_\_

Remarks: Note presence of charcoal, fire-cracked rock, etc.

Fire-cracked rock - 1

Historic Ceramics - 1

Wood - 1

WESTERN MICHIGAN UNIVERSITY  
Department of Anthropology  
Artifact Count Record

Site Lundy Pointe KBS-77-54 /20 AE 189

Classifier Jon Leader

Square Surface Collection

Today's Date 6/16/77

Level or  
Feature \_\_\_\_\_

Date Material  
Collected 6/9/77

Chipped Stone

Ground Stone

Biface (describe) \_\_\_\_\_

Celt \_\_\_\_\_

Uniface (describe) \_\_\_\_\_

Grooved Ax \_\_\_\_\_

Drill \_\_\_\_\_

Adz \_\_\_\_\_

Core \_\_\_\_\_

Mortar \_\_\_\_\_

Other (specify) Chippage 13

Pestle \_\_\_\_\_

Utilized Flakes 1

Rubbing Stone \_\_\_\_\_

Weight \_\_\_\_\_

Other (specify) \_\_\_\_\_

Bone

Shell

Fragments \_\_\_\_\_

Mollusc \_\_\_\_\_

Artifacts (specify) \_\_\_\_\_

Turtle \_\_\_\_\_

Pottery

Rim sherds \_\_\_\_\_

Body sherds \_\_\_\_\_

Clay pipe \_\_\_\_\_

Other (specify) \_\_\_\_\_

Remarks: Note presence of charcoal, fire-cracked rock, etc.

1 piece fire-cracked rock

WESTERN MICHIGAN UNIVERSITY  
Department of Anthropology  
Artifact Count Record

Site High Point KBS-77-55 /20 AE 190

Classifier J. Tressler

Square Surface Collection

Today's Date 6/16/77

Level or  
Feature \_\_\_\_\_

Date Material  
Collected 6/10/77

Chipped Stone

Biface (describe) scraper 1

Uniface (describe) scraper 1

Drill \_\_\_\_\_

Core \_\_\_\_\_

Other (specify) chippage 5

Utilized Flakes \_\_\_\_\_

Weight \_\_\_\_\_

Bone

Fragments \_\_\_\_\_

Artifacts (specify) \_\_\_\_\_

Pottery

Rim sherds \_\_\_\_\_

Clay pipe \_\_\_\_\_

Other (specify) \_\_\_\_\_

Ground Stone

Celt \_\_\_\_\_

Grooved Ax \_\_\_\_\_

Adz \_\_\_\_\_

Mortar \_\_\_\_\_

Pestle \_\_\_\_\_

Rubbing Stone \_\_\_\_\_

Other (specify) \_\_\_\_\_

Shell

Mollusc \_\_\_\_\_

Turtle \_\_\_\_\_

Body sherds \_\_\_\_\_

Remarks: Note presence of charcoal, fire-cracked rock, etc.

WESTERN MICHIGAN UNIVERSITY  
Department of Anthropology  
Artifact Count Record

Site The Lohman Site KBS-77-56 /20 AE 191 Classifier Jon Leader

Square Surface Collection Today's Date 6/16/77

Level or  
Feature \_\_\_\_\_ Date Material  
Collected 6/13/77

Chipped Stone

Biface (describe) 1  
projectile point

Uniface (describe) 1  
scraper

Drill \_\_\_\_\_

Core 1

Other (specify) \_\_\_\_\_

Utilized Flakes \_\_\_\_\_

Weight \_\_\_\_\_

Bone

Fragments \_\_\_\_\_

Artifacts (specify) \_\_\_\_\_

Pottery

Rim sherds \_\_\_\_\_

Clay pipe \_\_\_\_\_

Other (specify) \_\_\_\_\_

Ground Stone

Celt \_\_\_\_\_

Grooved Ax \_\_\_\_\_

Adz \_\_\_\_\_

Mortar \_\_\_\_\_

Pestle \_\_\_\_\_

Rubbing Stone \_\_\_\_\_

Other (specify) \_\_\_\_\_

Shell

Mollusc \_\_\_\_\_

Turtle \_\_\_\_\_

Body sherds \_\_\_\_\_

Remarks: Note presence of charcoal, fire-cracked rock, etc.

1 piece fire-cracked rock

WESTERN MICHIGAN UNIVERSITY  
Department of Anthropology  
Artifact Count Record

Site Indian Shores KBS-77-57 /20 AE 192

Classifier Jon Leader

Square Surface Survey

Today's Date 6/16/77

Level or  
Feature \_\_\_\_\_

Date Material  
Collected \_\_\_\_\_

Chipped Stone

Ground Stone

Biface (describe) \_\_\_\_\_

Celt \_\_\_\_\_

Uniface (describe) 2 \_\_\_\_\_

Grooved Ax \_\_\_\_\_

Adz \_\_\_\_\_

Drill \_\_\_\_\_

Mortar \_\_\_\_\_

Core \_\_\_\_\_

Pestle \_\_\_\_\_

Other (specify) \_\_\_\_\_

Rubbing Stone \_\_\_\_\_

Utilized Flakes \_\_\_\_\_

Other (specify) \_\_\_\_\_

Weight \_\_\_\_\_

Bone

Shell

Fragments \_\_\_\_\_

Mollusc \_\_\_\_\_

Artifacts (specify) \_\_\_\_\_

Turtle \_\_\_\_\_

Pottery

Rim sherds \_\_\_\_\_

Body sherds \_\_\_\_\_

Clay pipe \_\_\_\_\_

Other (specify) \_\_\_\_\_

Remarks: Note presence of charcoal, fire-cracked rock, etc.

2 pieces fire-cracked rock



WESTERN MICHIGAN UNIVERSITY  
Department of Anthropology  
Artifact Count Record

Site Pine Point KBS-77-58 /20 AE 193

Classifier Joyce Tressler

Square Surface Collection

Today's Date 6/16/77

Level or  
Feature \_\_\_\_\_

Date Material  
Collected ?

Chipped Stone

Biface (describe) \_\_\_\_\_

Uniface (describe) \_\_\_\_\_

Drill \_\_\_\_\_

Core \_\_\_\_\_

Other (specify) Chippage 5

Utilized Flakes \_\_\_\_\_

Weight \_\_\_\_\_

Ground Stone

Celt \_\_\_\_\_

Grooved Ax \_\_\_\_\_

Adz \_\_\_\_\_

Mortar \_\_\_\_\_

Pestle \_\_\_\_\_

Rubbing Stone \_\_\_\_\_

Other (specify) \_\_\_\_\_

Bone

Fragments \_\_\_\_\_

Artifacts (specify) \_\_\_\_\_

Shell

Mollusc \_\_\_\_\_

Turtle \_\_\_\_\_

Pottery

Rim sherds \_\_\_\_\_

Clay pipe \_\_\_\_\_

Other (specify) \_\_\_\_\_

Body sherds \_\_\_\_\_

Remarks: Note presence of charcoal, fire-cracked rock, etc.

WESTERN MICHIGAN UNIVERSITY  
Department of Anthropology  
Artifact Count Record

Site Swan Creek, Campsite #6  
KBS-77-59 /20 AE 195

Classifier Joyce Tressler

Square Surface Collection

Today's Date 6/16/77

Level or  
Feature \_\_\_\_\_

Date Material  
Collected ?

Chipped Stone

Biface (describe) \_\_\_\_\_

Uniface (describe) \_\_\_\_\_

Drill \_\_\_\_\_

Core \_\_\_\_\_

Other (specify) Chippage 3

Utilized Flakes 1

Weight \_\_\_\_\_

Bone

Fragments \_\_\_\_\_

Artifacts (specify) \_\_\_\_\_

Pottery

Rim sherds \_\_\_\_\_

Clay pipe \_\_\_\_\_

Other (specify) \_\_\_\_\_

Ground Stone

Celt \_\_\_\_\_

Grooved Ax \_\_\_\_\_

Adz \_\_\_\_\_

Mortar \_\_\_\_\_

Pestle \_\_\_\_\_

Rubbing Stone \_\_\_\_\_

Other (specify) \_\_\_\_\_

Shell

Mollusc \_\_\_\_\_

Turtle \_\_\_\_\_

Body sherds \_\_\_\_\_

Remarks: Note presence of charcoal, fire-cracked rock, etc.

1 fire-cracked rock

1 piece historic ceramics

WESTERN MICHIGAN UNIVERSITY  
Department of Anthropology  
Artifact Count Record

Site Elam KBS-77-60 /20 AE 195

Classifier Joyce Tressler

Square Surface Collection

Today's Date 6/16/77

Level or  
Feature \_\_\_\_\_

Date Material  
Collected 6/14/77

Chipped Stone

Biface (describe) tool fragment 1

Uniface (describe) \_\_\_\_\_

Drill \_\_\_\_\_

Core \_\_\_\_\_

Other (specify) chippage 11

Utilized Flakes \_\_\_\_\_

Weight \_\_\_\_\_

Bone

Fragments \_\_\_\_\_

Artifacts (specify) \_\_\_\_\_

Pottery

Rim sherds 1

Clay pipe \_\_\_\_\_

Other (specify) \_\_\_\_\_

Ground Stone

Celt \_\_\_\_\_

Grooved Ax \_\_\_\_\_

Adz \_\_\_\_\_

Mortar \_\_\_\_\_

Pestle \_\_\_\_\_

Rubbing Stone Hammerstone 1

Other (specify) \_\_\_\_\_

Shell

Mollusc \_\_\_\_\_

Turtle \_\_\_\_\_

Body sherds 6

Remarks: Note presence of charcoal, fire-cracked rock, etc.

1 fire-cracked rock

Level or Feature	Date Material Collected
	6/15/77

## Ground Stone

Celt

Grooved Ax

Adz

Mortar

Pestle

Rubbing Stone

Other (specify) \_\_\_\_\_

## Shell

Mollusc

Turtle

Rim sherds

Body sherds

Other (specify) \_\_\_\_\_

Remarks: Note presence of charcoal, fire-cracked rock, etc.

WESTERN MICHIGAN UNIVERSITY  
Department of Anthropology  
Artifact Count Record

Site Millgrove KBS-77-62/20 AE 197

Classifier Don Weston

Square Surface Collection

Today's Date 6/15/77

Level or  
Feature \_\_\_\_\_

Date Material  
Collected 6/15/77

Chipped Stone

Ground Stone

Biface (describe) \_\_\_\_\_

Celt \_\_\_\_\_

Uniface (describe) \_\_\_\_\_

Grooved Ax \_\_\_\_\_

Drill \_\_\_\_\_

Adz \_\_\_\_\_

Core \_\_\_\_\_

Mortar \_\_\_\_\_

Other (specify) \_\_\_\_\_

Pestle \_\_\_\_\_

Rubbing Stone \_\_\_\_\_

Utilized Flakes \_\_\_\_\_

Other (specify) \_\_\_\_\_

Weight \_\_\_\_\_

Bone

Shell

Fragments \_\_\_\_\_

Mollusc \_\_\_\_\_

Artifacts (specify) \_\_\_\_\_

Turtle \_\_\_\_\_

Pottery

Rim sherds \_\_\_\_\_

Body sherds \_\_\_\_\_

Clay pipe \_\_\_\_\_

Other (specify) \_\_\_\_\_

Remarks: Note presence of charcoal, fire-cracked rock, etc.

Surface collection in possession of land owner - Clarence Hiscock  
Photographed 6/15/77