



Western Michigan University
ScholarWorks at WMU

Legacy Scout Tickets from Pure Oil Company

8-20-2021

MGRRE_PureOilScoutTickets_Meyer-Troost Comm_1_21139128800000

MGRRE

Western Michigan University

Follow this and additional works at: <https://scholarworks.wmich.edu/pure>



Part of the Geology Commons

WMU ScholarWorks Citation

MGRRE, "MGRRE_PureOilScoutTickets_Meyer-Troost Comm_1_21139128800000" (2021). *Legacy Scout Tickets from Pure Oil Company*. 9180.

<https://scholarworks.wmich.edu/pure/9180>

This Document is brought to you for free and open access via ScholarWorks at WMU. It has been accepted for inclusion in Legacy Scout Tickets from Pure Oil Company by an authorized administrator of ScholarWorks at WMU. See the National Digital Catalogue - Science Base Catalogue for more collections submitted by MGRRE.



MGRRE_PureOilScoutTickets_Meyer-Troost Comm_1_21139128800000

API 21139128800000

Permit Number 12880

Lease Name Meyer-Troost Comm

Well Number 1

County Ottawa

Township 05N

Range 14W

Section 12

2021 DEQ or Pure co_name TRI County Development Company

Pure Number 550

Latitude 42.83505

Longitude -85.91293

WELL REPORT - OUTSIDE OPERATIONS

SERIAL NO. 550

STATE Michigan PS&K Ottawa CO.

OPERATOR Tri-County Development Co.

FARM Meyer-Troost Comm. WELL NO. 1

TWP. Zeeland S. 12 T. 5N R. 14W

LOC. C SE NW

WILDCAT FIELD FIELD NAME

MAP NO. CO-ORD. ELEV.

STATUS Plugged and Abandoned 10-30-48.

Total Depth 990'

NORTH

DATE 11-17-48 SCOUT H. J. G.

**THE PURE OIL COMPANY
LOCATION REPORT**

Date December 31, 1946

A.F.E. No. Meyer-Troost Comm.
Meyer-Troost Comm.

Division Mich. Producing District _____ Lease _____

Acres _____ Lease No. 12 Elevation 550 Well No. 1 (Serial No. 550)

Quadrangle C SE NW C SW NW Sec. 12 Twp. 5 N Rge. 14 W DIST. Zeeland Twp. Zeeland

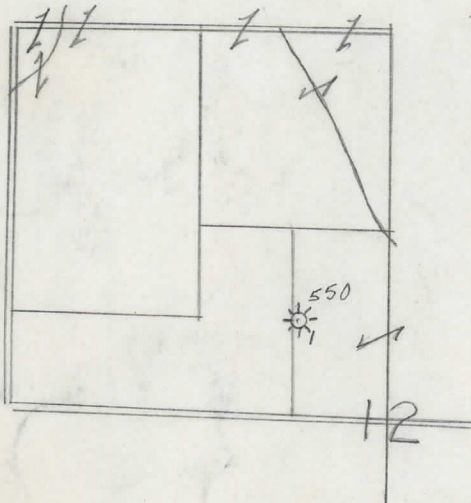
Survey _____ County Ottawa State Michigan

Operator Tri-County Dev. Co. Map Zeeland Township, Ottawa County

<u>666</u>	<u>660</u>	Feet from North Line of Lease
<u>652</u>	<u>652</u>	" " East " "
<u>660</u>	<u>660</u>	" " South " "
_____	_____	" " West " "
<u>652</u>	<u>652</u>	Feet from North Line of Section
<u>660</u>	<u>660</u>	" " East " " <u>1/4</u>
_____	_____	" " South " "
_____	_____	" " West " "

LEGEND

- ☀ Gas Well
- Oil Well
- ☀ Gas - Distillate Well
- or ○ Dry Hole
- Dry Showing Oil
- Location
- ☀ Dry Showing Gas
- ⊗ Abandoned Location
- ☀ or ☀ Abandoned Gas Well
- or ● Abandoned Oil Well
- or ○ Input Well



Remarks: 1.P. - 15,000 G.F. Scale _____

T. D 990'

Submitted by CB Civil Engineer

Approved by _____ Division Manager

Approved by _____ Vice-President - General Manager