



Western Michigan University
ScholarWorks at WMU

25 Year Club

Western Michigan University

1996

1996 University Employee Service Recognition Program

Western Michigan University

Follow this and additional works at: <https://scholarworks.wmich.edu/twenty-five-year-club>



Part of the Higher Education Commons

WMU ScholarWorks Citation

Western Michigan University, "1996 University Employee Service Recognition Program" (1996). *25 Year Club*. 24.

<https://scholarworks.wmich.edu/twenty-five-year-club/24>

This Program is brought to you for free and open access by the Western Michigan University at ScholarWorks at WMU. It has been accepted for inclusion in 25 Year Club by an authorized administrator of ScholarWorks at WMU. For more information, please contact wmu-scholarworks@wmich.edu.



1996
*University
Employee Service
Recognition Program*



WESTERN MICHIGAN UNIVERSITY

A WORLD OF DIFFERENCE

*1996
University
Employee Service
Recognition Program*



WESTERN MICHIGAN UNIVERSITY

A WORLD OF DIFFERENCE

Diether H. Haenicke
President



Kalamazoo, Michigan 49008-5134
616 387-2351
Fax: 616 387-2355

WESTERN MICHIGAN UNIVERSITY

December 3, 1996

Dear Colleagues:

It is my pleasure to join the rest of the Western Michigan University community in recognizing the valuable contributions made by the faculty and staff who have committed their careers to Western. Those of you with many years of service have shared significantly in building this University and establishing its fine history. Many of you have served through calm and storm, growth and decline, good times and bad times. You have earned our respect and our thanks.

I appreciate your commitment and dedication, and I trust that you will continue your efforts to build toward our common goal of excellence and recognition for this fine educational institution.

Sincerely,

A handwritten signature in dark ink, appearing to read "Diether H.", written in a cursive style.

Diether H. Haenicke
President





WESTERN MICHIGAN UNIVERSITY

December 3, 1996

Dear Faculty and Staff:

I am very pleased to extend my personal best wishes to those employees whose names and faces appear in the 1996 University Employee Service Recognition Program booklet. This booklet is printed to honor you and to recognize the significant service anniversaries you are celebrating this year.

It is with special pride that I congratulate new members of the 25 Year Club. Thank you, to each of our 1996 inductees, for your dedication and commitment as evidenced by your 25 years of service to Western Michigan University. The 25 Year Club is the pinnacle of Western's recognition program. Membership is offered to all regular status University faculty, administrators, and service staff who have 25 years or more of continuous service. Twenty-five Year Club members are invited to an annual banquet in their honor. New inductees receive a 25-year service pin and a framed certificate, and they may choose from a selection of commemorative gifts.

Each month, employees celebrating ten, fifteen, twenty, thirty, thirty-five, or more years of active service are recognized with a letter of appreciation, certificate, and service pin. We also want to share the names of those individuals with the entire University; you will find them listed in this booklet. Western Michigan University considers it a privilege to publicly recognize those of you who have shown this career dedication by your long history of employment service. We are very conscious of your contributions and your commitment to excellence.

To all of you, congratulations—and thank you.

Sincerely,

A handwritten signature in cursive script that reads "Anne Thompson".

Anne E. Thompson, Director
Compensation and Employee Relations

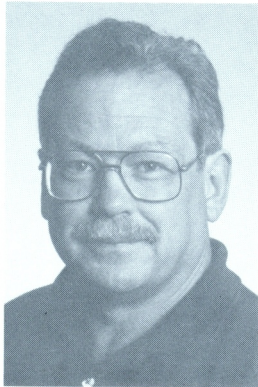


25 Year Club

New Inductees



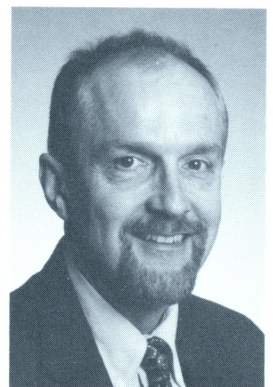
Atkins, Michael B.
Professor
Industrial and Manufacturing
Engineering
1971



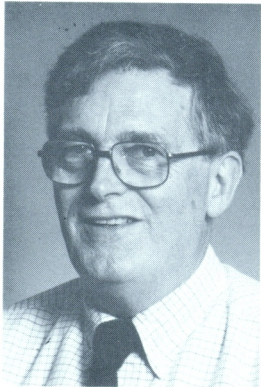
Berger, Steven T.
Aviation Mechanic
Aviation Sciences
1971



Buckner, Regina E.
Director
Operational Services
University Libraries
1971



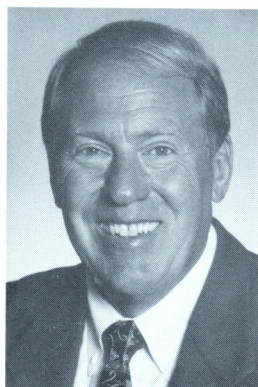
Clark, Michael J.
Associate Professor
Speech Pathology and
Audiology
1971



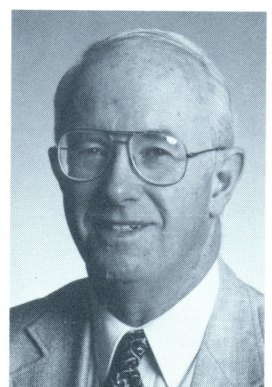
Cooney, Seamus A.
Professor
English
1971



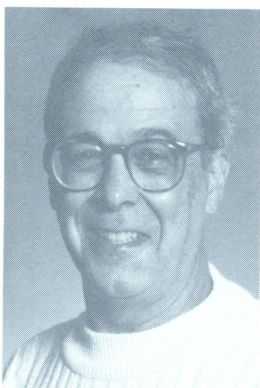
Datta-Sandhu, Suhashni
Associate Professor
Political Science
1971



Dommert, Douglas H.
Chief Pharmacist
Sindecuse Health Center
1971



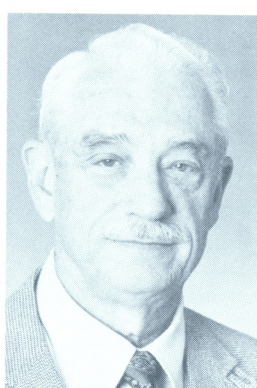
Felkel, Robert W.
Professor
Foreign Languages and
Literatures
1971



Ferreira, James M.
Professor
History
1971



Gauper, Stephanie A.
Professor
English
1971



Griffin, Robert J.
Professor
Foreign Languages and
Literatures
1971



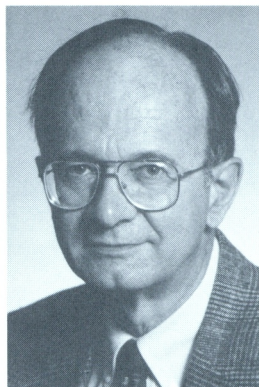
Hains, Maryellen
Associate Professor
English
1971



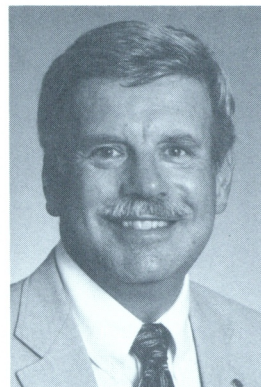
Halvas, Earl E.
Assistant Professor
Business Information Systems
1971



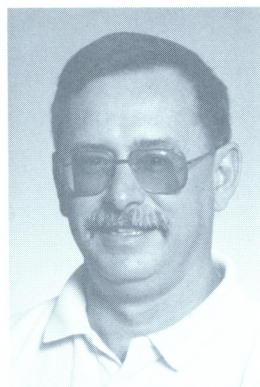
Kremer, Susan S.
Administrative Assistant II
Office of Vice President for
Business and Finance
1971



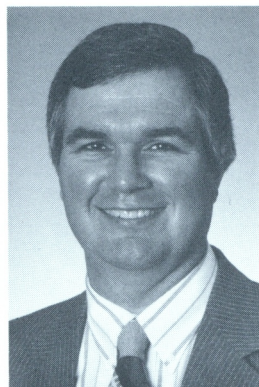
Mason, John L.
Associate Professor
Electrical and Computer
Engineering
1971



McKee, David H.
Associate Professor
Waldo Library
1971



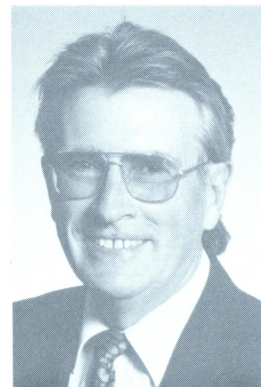
Odehnal, Joseph J.
Supervisor
Plant-B/E Maintenance
1970



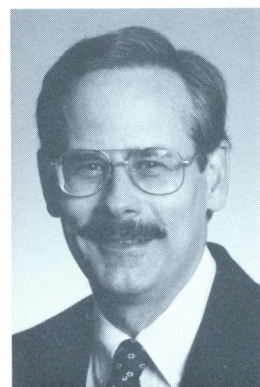
Pfau, Thomas K.
Chemistry Lab Assistant
Chemistry
1971



Satterfield, John D.
Assistant Manager
Plant-B/E Maintenance
1971



Stoltman, Joseph P.
Professor
Geography
1971



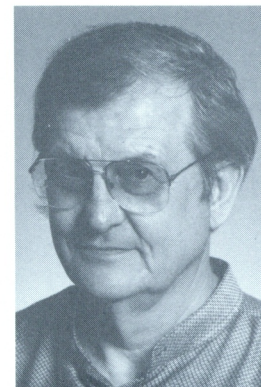
Wait, Robert F.
Associate Professor
Sociology
1971



West, S. Gwen
Secretary III
Comparative Religion
1971



Zumburs, Edgar J.
Graphics Technician
Plant-Administrative Services
1971



Zupko, Ramon
Professor
Music
1971

Photographs were not available for the
following employees with 25 years of service:

Bowsher, Robert G., Jr.
Custodian
Plant-Building Services
1971

Harrison, Susan K.
Coordinator, Fast Cataloging
Waldo Library
1971

Lassiter, Robert R.
Refrigerator Repairperson I
Plant-B/E Maintenance
1971

Markle, Gerald E.
Professor
Sociology
1971

25 Year Club

Members

Abdul-Mutakallim, Umar F.	Plant-Building Services	1969
Alavi, Yousef	Mathematics and Statistics	1958
Apotheker, Wesley	Plant-B/E Maintenance	1969
Appel, William C.	Music	1965
Atwell, Richard P.	Fetzer Center	1969
Bach, Shirley	Philosophy	1961
Bailey, Thomas C.	Ombudsman	1970
Barr, Dorothea I.	Political Science	1967
Bartholomew, Kenneth D.	Dining Services	1967
Bartley, Lynwood H.	Communication	1963
Bate, Harold L.	Speech Pathology and Audiology	1964
Bate, Sherry K.	College of Fine Arts	1970
Beam, Robert M.	Vice President for Business and Finance	1965
Beatty, John W.	Intercollegiate Athletics	1969
Benne, Max E.	Family and Consumer Sciences	1969
Berndt, Donald C.	Chemistry	1962
Bero, James L.	Plant-L/G Maintenance	1969
Betz, Robert L.	Counselor Education and Counseling Psychology	1963
Beuving, Leonard J.	Biological Sciences	1970
Blefko, Robert L.	Mathematics and Statistics	1968
Bloemsma, Jerry L.	WMU Bookstore	1964
Blowers, Doug O.	Plant-B/E Maintenance	1970
Boodt, Paula J.	Admissions and Orientation	1969
Boothroyd, Gregory W.	University Counseling/Testing	1970
Bosco, James J.	Education and Professional Development	1965
Britten, Edward L.	Plant-L/G Maintenance	1968
Buckley, Joseph T.	Mathematics and Statistics	1970
Buckner, Michael J.	Waldo Library	1968
Bullard, Josephine J.	Henry/Hoekje/Bigelow Dining Services	1970
Burns, James W.	Education and Professional Development	1968
Burpo, Bobby D.	Printing Services	1960
Carlson, Lewis H.	History	1968
Carlson, Norman E.	English	1963
Carney, John M.	Art	1966
Carr, John S.	WMU Bookstore	1965
Caruso, Phillip P.	Economics	1967
Cha, Ellen S.	Waldo Library	1966
Chapel, Joe R.	Education and Professional Development	1965
Chapman, Kay M.	External Affairs and Development	1970
Chartrand, Gary T.	Mathematics and Statistics	1964
Chase, Allen R.	Henry/Hoekje/Bigelow Dining Services	1965
Chase, Lyn J.	Waldo Library	1963
Cheatum, Billye A.	Health, Physical Education and Recreation	1967

Clark, Thomas W.	Plant-L/G Maintenance	1966
Comer, Charles D.	Health, Physical Education and Recreation	1968
Cooley, John R.	English	1968
Cornish, Wendy L.	Dance	1967
Cottrell, June S.	Theatre	1966
Cowden, David J.	Educational Leadership	1969
Crane, Loren D.	Communication	1965
Crowell, Ronald A.	Education and Professional Development	1966
Culp, Jack N.	Plant-Utilities	1970
Curtis-Smith, Curtis	Music	1968
Dahlberg, Kenneth A.	Political Science	1966
Darling, Dennis E.	Paper and Printing Science and Engineering	1967
Darling, Marvin L.	Sindecuse Health Center	1965
Davidson, Clifford O.	Medieval Institute	1965
Davis, Ronald W.	History	1966
Day, Tom L.	Printing Services	1965
Dean, James R.	Dining Services	1967
Decker, Fred A.	Intercollegiate Athletics	1968
Decker, Jeffrey W.	Plant-L/G Maintenance	1970
DeLuca, Joseph V.	Art	1966
Demetrakopoulos, George H.	College of Arts and Sciences	1965
de Peaux, Richard	Art	1969
DeRyke, Doralee N.	Haworth College of Business	1964
Dickason, David G.	International Affairs	1966
Dieker, Richard J.	Communication	1966
Diget, David K.	Health, Physical Education and Recreation	1970
Dilworth, John B.	Philosophy	1968
Donnelly, Charles G. "Bud"	Student Judicial Affairs	1963
Dooley, Howard J.	International Affairs	1970
Doubleday, Carl W.	Music	1968
Douma, Rollin G.	Graduate College	1970
Dunkley, Lynda L.	Plant-L/G Maintenance	1967
Earhart, H. Bryon	Comparative Religion	1966
Ede, David A.	Comparative Religion	1970
Edwards, Adrian E.	Finance and Commercial Law	1964
Eenigenburg, Paul J.	Mathematics and Statistics	1969
Eisenberg, Robert C.	Biological Sciences	1967
Elder, E. Rozanne	History	1968
Ellin, Joseph S.	Philosophy	1962
Erickson, Robert L.	Speech Pathology and Audiology	1963
Evert, Mark J.	Miller Auditorium	1970
Falk, Arthur E.	Philosophy	1964
Falk, Nancy E.	Comparative Religion	1966
Farris, Howard E.	Psychology	1966
Ficsor, Gyula	Biological Sciences	1967
Fisk, F. Gregory	Science Studies	1969
Flegel, Jon O.	Miller Auditorium	1968
Flickinger, Sharon M.	Continuing Education	1970
Forsleff, Louise S.	Community Health Services	1962

Fuss, Jerry F.	Accounts Payable	1969
Gardiner, Jeffrey B.	Foreign Languages and Literatures	1970
Gardner, Wayland D.	Economics	1964
Garland, William	Anthropology	1962
Gianakaris, Constantine J.	English	1966
Goes, L. John	Physical Plant	1970
Gossman, Thomas L.	Finance and Commercial Law	1970
Grace, John D.	Geology	1969
Green, Sue H.	Bernhard Center	1968
Gregory, Ross	History	1966
Griggs, Russell P.	Plant-L/G Maintenance	1958
Groh, Jolene V.	International Student Services	1967
Grotzinger, Laurel A.	Waldo Library	1964
Guminski, Louis R.	Printing Services	1964
Haight, Bruce M.	History	1970
Hamelink, Jerry H.	Mechanical and Aeronautical Engineering	1968
Hamelink, Richard A.	Printing Services	1956
Haner, Robert E.	Plant-B/E Maintenance	1969
Hannafor, Alonzo E.	College of Education	1970
Hardie, Gerald	Physics	1965
Hargreave, David	Science Studies	1969
Harring, L. Richard	Education and Professional Development	1968
Hartness, Howard E.	Plant-Building Services	1967
Havira, Barbara S.	History	1969
Havira, Robert D.	Geology	1970
Hawkins, Irvin R.	Public Safety	1968
Healy, Helen Jean	Waldo Library	1965
Herron, Philip H.	Public Safety	1970
Higgins, Robert A.	Printing Services	1969
Hinkel, Robert C.	English	1968
Hixson, Edward L.	Plant-B/E Maintenance	1970
Hobbs, George W.	Health, Physical Education and Recreation	1965
Hoff, Richard M.	Printing Services	1968
Honsberger, Dean K.	University Budgets	1969
Horn, Helen M.	Office of Provost and V.P. for Academic Affairs	1968
Houdek, John T.	History	1963
Howell, James A.	Chemistry	1964
Hsieh, Philip P.	Mathematics and Statistics	1964
Huitema, Bradley E.	Psychology	1968
Humiston, Robert G.	Music	1964
Inselberg, Edgar	Biological Sciences	1966
Isaak, Alan C.	Political Science	1966
Jamison, Frank R.	Video Distribution	1967
Johnston, Arnie	English	1966
Jones, Darrell G.	Business Information Systems	1962
Joyce, Richard E.	Communication	1970
Kanamuell, Joseph M.	Chemistry	1966
Kapoor, Shashichand F.	Mathematics and Statistics	1967
Kaul, R. Dean	Physics	1967

Keaveny, Richard J.	Art	1968
Keenan, J. Michael	Management	1968
Kelemen, Joseph A.	Electrical and Computer Engineering	1966
Kent, Neil	Psychology	1965
King, Donald	Art	1966
Kirklin, James D.	Technical Services	1960
Kohrman, George R.	University Computing Services	1968
Kotecki, Robert G.	Education and Professional Development	1962
Krawutschke, Peter W.	Foreign Languages and Literatures	1967
Laaksonen, Albert W.	Off-Campus Life	1967
Laing, Robert A.	Mathematics and Statistics	1970
Lard, Darlene	Mathematics and Statistics	1968
Lawson, E. Thomas	Comparative Religion	1961
Loeffler, Erika	Anthropology	1968
Lyon, David O.	College of Arts and Sciences	1963
Macleod, Garrard D.	WMUK	1959
MacNellis, Paul	Plant-L/G Maintenance	1968
MacQueen, C. Bruce	University Counseling/Testing	1966
Maier, Paul L.	History	1960
Malott, Richard W.	Psychology	1966
Marks, Sue E.	Valley #3 Dining Service	1969
Martin, Darwin R.	Plant-B/E Maintenance	1967
Martin, James D.	Public Safety	1970
Martin, Patricia M.	Sociology	1969
McAnaw, Richard L.	Political Science	1964
McCamman, Tim A.	Plant-L/G Maintenance	1968
McCarty, F. William	Finance and Commercial Law	1970
McCarville, Michael E.	Chemistry	1968
Mergen, Paul	Art	1965
Meyer, Ruth Ann	Health, Physical Education and Recreation	1965
Michael, John L.	Psychology	1967
Micklin, Philip P.	Geography	1969
Miller, Diann J.	University Counseling/Testing	1968
Miller, John	Health, Physical Education and Recreation	1963
Montz, Paul	Plant-L/G Maintenance	1968
Morehouse, Gerald L.	Logistical Services-Freight/Postal/Delivery	1970
Morris, David A.	Admissions and Orientation	1965
Morris, William C.	Accountancy	1961
Murphy, John M.	English	1962
Nelson, J. Donald	Computer Science	1970
Neu, Mariel	Art	1968
Newell, Gale E.	Accountancy	1968
Nowak, Gerard T.	University Counseling/Testing	1970
Oas, Donna B.	Speech Pathology and Audiology	1966
Oppliger, Larry D.	Science Studies	1963
Orlofsky, Fred C.	Health, Physical Education and Recreation	1966
Page-Robin, Ellen	Community Health Services	1966
Pagel, Thomas F.	Communication	1970
Papesh, Joyce E.	University Budgets	1964

Petro, John W.	Mathematics and Statistics	1961
Petropoulos, Theodore J.	Bernhard Center	1969
Pippen, Richard	Biological Sciences	1963
Poel, Robert H.	Science Studies	1970
Pollack, Kenneth J.	Plant-L/G Maintenance	1970
Porter, Dale H.	History	1970
Porter, Tamara L.	University Budgets	1969
Pritchard, Michael S.	Philosophy	1968
Quandt, Eldor C.	Geography	1967
Randt, Edward W., Jr.	Plant-B/E Maintenance	1969
Raup, Henry A.	Geography	1960
Reid, Kenneth E.	Social Work	1968
Renstrom, Peter G.	Political Science	1969
Rey, Doris A.	Reading Center	1965
Rhodes, Curtis	Art	1966
Ricci, Robert J.	Music	1968
Rice, David W.	Plant-B/E Maintenance	1966
Riley, James	Mathematics and Statistics	1960
Ritchie, William A.	Political Science	1964
Rizzolo, Louis	Art	1964
Robbert, Paul	Art	1957
Robeck, George	Communication	1968
Roberts, Keith	Plant-Building Services	1969
Roberts, Lester A.	Fetzer Center	1969
Robertson, Malcolm H.	Psychology	1961
Roekle, Philip S.	Plant-General Services	1969
Rogers, Chester B.	Political Science	1966
Rolls, Linda S.	Waldo Library	1968
Rozelle, David L.	Accountancy	1970
Ryder, Becky L.	Economics	1966
Sabel, Anthony C.	Auxiliary Enterprises	1965
Sackett, Ronald	Aviation Sciences	1966
Schaper, James T.	Auxiliary Enterprises	1970
Schippers, Nelson P.	Plant-B/E Maintenance	1965
Schmitt, Peter J.	History	1965
Schulz, Frederick G.	Campus Facility Development	1970
Scott, Herbert S.	English	1968
Scott, Shirley Clay	English	1970
Seegers, Frederick	University Computing Services	1969
Seelig, Karen	Speech Pathology and Audiology	1967
Seiler, Thomas	English	1970
Shamu, Robert E.	Physics	1967
Sharma, Visho	Science Studies	1967
Shaw, John F.	Intercollegiate Athletics	1970
Sheldon, David	Music	1966
Sichel, Werner	Economics	1960
Siebert, Rudolf J.	Comparative Religion	1965
Sievers, Gerald L.	Mathematics and Statistics	1967
Sill, Thomas	Communication	1967

Slocum, Donald E.	Plant-B/E Maintenance	1965
Small, Thomas E.	English	1966
Smidchens, Uldis	Educational Leadership	1968
Smith, Carol Payne	Education and Professional Development	1964
Smith, Herbert L.	Sociology	1963
Sonicksen, Patricia L.	Customer Account Services	1970
Sonnad, Subhash R.	Sociology	1965
Soule, Raymond C.	Plant-B/E Maintenance	1970
Spaniolo, Charles V.	University Counseling/Testing	1965
Sprick, Robert W.	Residence Hall Facilities	1965
Steinhaus, Ralph K.	Chemistry	1968
Stephenson, Diane L.	Biological Sciences	1965
Stillwell, Janet E.	College of Fine Arts	1967
Stillwell, Lyda J.	Theatre	1966
Stoken, Terry R.	Plant-B/E Maintenance	1965
Stoline, Michael R.	Mathematics and Statistics	1967
Straw, W. Thomas	Geology	1968
Strayer, Stuart O.	Public Safety	1970
Stroupe, John H.	English	1965
Sukovich, Joan	Plant-Administrative Services	1966
Sundick, Robert I.	Anthropology	1969
Swanson, Curtis N.	Aviation Sciences	1968
Syndergaard, Larry E.	English	1968
Tarver, George, Jr.	Plant-B/E Maintenance	1965
Thomas, Darrell B.	Family and Consumer Sciences	1968
Timmer, Suzanne M.	College of Education	1970
Tyler, Larry L.	Sociology	1970
Ulrich, Roger E.	Psychology	1965
VandeMaele, Joyce	External Affairs and Development	1968
VanDePolder, James	Industrial and Manufacturing Engineering	1966
Vander Kooi, Lambert R.	Electrical and Computer Engineering	1970
Van Hoeven, Shirley A.	Communication	1970
Wagenfeld, Morton O.	Sociology	1966
Walker, Lewis	Sociology	1964
Washington, Earl M.	Black Americana Studies	1970
Weaver, Constance S.	English	1965
Weber, Michael A.	Payroll	1966
Weessies, Marvin J.	Blind Rehabilitation	1970
Welke, William	Accountancy	1967
Whaley, Robert L.	Music	1966
White, Arthur T.	Mathematics and Statistics	1969
Wilhite, Lindsey	Foreign Languages and Literatures	1965
Williams, Lawrence A.	College of Engineering	1968
Winter, Ronald J.	Health, Physical Education and Recreation	1969
Wolf, Franklin K.	Industrial and Manufacturing Engineering	1970
Wolf, Phyllis M.	Computer Science	1967
Woodworth, Shirley C.	Communication	1963
Yang, Kung-Wei	Mathematics and Statistics	1966
Yeckley, Kay I.	Art	1967
Zabik, Roger M.	Health, Physical Education and Recreation	1967
Ziring, Lawrence	Political Science	1967

25 Year Club

Retirees

Abolins, Aina	Continuing Education	1957
Ackerson, Henrietta	President's Office	1959
Allen, Ralph W.	Plant-B/E Maintenance	1964
Anderson, Robert H.	Chemistry	1957
Argyropoulos, Triantafilos D.	Art	1964
Asher, E. Jack	Institutional Research	1954
Bailey, Frederick S.	Education and Professional Development	1958
Bailey, Keith D.	Education and Professional Development	1955
Baker, Helen F.	Food Service	1959
Beech, Beatrice H.	Waldo Library	1967
Beech, George T.	History	1960
Behm, Harley	Computing and Communication Services	1967
Belleville, Gary L.	Student Employment Referral Services	1967
Berman, Laurence H.	Testing and Evaluation Services	1967
Bickle, Esther E.	Graduate College	1966
Bishop, P. Glen	Division of Media Services	1953
Blackburn, Doris J.	Residence Hall Custodial	1959
Booker, Gene S.	Management	1960
Borr, Earl L.	Education and Professional Development	1957
Boughner, Robert E.	Industrial Engineering	1967
Boven, Donald E.	Health, Physical Education and Recreation	1953
Boyle, Dennis	Registrar	1965
Brawer, Milton J.	Sociology	1960
Breed, Sterling L.	Counseling Center	1956
Breisach, Ernst A.	History	1957
Bren, Anna	Data Processing/SCT	1959
Brewer, Richard D.	Biological Sciences	1959
Brigham, Kent W.	Interior Design	1967
Brinn, Chauncey J.	Vice President for Administrative Affairs	1968
Brown, Alan S.	History	1955
Brown, Donald J.	Chemistry	1960
Brown, Russell W.	Music	1951
Bruce, Phillip L.	Engineering Technology	1963
Brunhumer, Walter J.	History	1957
Burke, John T.	Accountancy	1962
Burke, Richard T.	Vice President, Regional Education and Economic Development	1964
Burnham, Phyllis B.	Archives	1962
Byle, Arvon D.	Paper and Printing Sciences and Engineering	1963
Cain, Mary A.	Education and Professional Development	1961
Callan, Edward T.	English	1957
Carlson, Bernadine P.	English	1953

Carlson, Janice L.	Henry/Hoekje/Bigelow Dining Services	1968
Carlson, William A.	Counselor Education and Counseling Psychology	1966
Carr, Thomas J.	Operations	1962
Castel, Albert E.	History	1960
Chambers, Bill M.	Health, Physical Education and Recreation	1960
Chapin, Franklin R.	Plant-B/E Maintenance	1968
Clark, Samuel I.	Honors College	1948
Clarke, A. Bruce	Provost/Vice President for Academic Affairs and Mathematics and Statistics	1966
Clysdale, Patrick	Health, Physical Education and Recreation	1958
Cole, Roger L.	Foreign Languages and Literatures	1959
Combs, William W.	English	1962
Cooke, Dean W.	Chemistry	1966
Copps, John A.	Economics	1959
Cordier, Mary H.	Education and Professional Development	1964
Cordier, Sherwood S.	History	1956
Corner, Eddie	Plant-B/E Maintenance	1968
Coyne, Thomas E.	Vice President for Student Affairs	1962
Cram, Wayne L.	Plant-Building Services	1968
Cummings, John W.	Engineering Technology	1962
Dales, George G.	Health, Physical Education and Recreation	1953
Dannenberg, Raymond A.	Marketing	1956
David, Beverly "Penny"	Theatre	1967
Davidson, Audrey J.	Music	1965
Davis, Charles A.	Electrical Engineering	1967
DeHollander, James A.	Plant-B/E Maintenance	1966
Denenfeld, Philip S.	Academic Affairs	1956
Derby, Stanley K.	Physics	1955
Ebert, Frances H.	Health, Physical Education and Recreation	1963
Ebling, Benjamin	Languages and Linguistics	1965
Eichenlaub, Val L.	Geography	1962
Eisenbach, Joseph J.	Special Education	1961
Ellinger, Herbert E.	Transportation Technology	1944
Elsasser, Edward O.	History	1955
Embertson, Richard E.	Marketing	1956
Engelke, Hans	Waldo Library	1961
Engels, Carl J.	College of General Studies, Science Area	1953
Engemann, Joseph G.	Biological Sciences	1960
Engstrom, Robert H.	Art	1959
Erhart, Rainer R.	Geography	1965
Feirer, John L.	Engineering Technology	1940
Fenton, Mary Frances	College of Education	1963
Flaspohler, Ronald J.	General Studies	1965
Flowers, Delores D.	Speech Pathology and Audiology	1956
Fox, William S.	Social Science	1959
France, June G.	Education and Professional Development	1957
Frey, Jack J.	Music	1951
Friedel, Jean E.	Health, Physical Education and Recreation	1960
Friedman, Stephen B.	Biological Sciences	1966

Gabier, Russell L.	Alumni Affairs and Development	1958
Galligan, Edward L.	English	1958
Garland, Barbara C.	International Student Services	1968
Garland, Elizabeth B.	Anthropology	1964
George, Dorothy I.	Financial Aid	1959
Gill, Raymond T.	Operational Service	1960
Gioia, Anthony A.	Mathematics and Statistics	1966
Glancy, Donald L.	Printing Services	1962
Goldfarb, Clare R.	English	1960
Goldfarb, Russell M.	English	1960
Grandstaff, Russell J.	Theatre	1965
Griggs, J. W.	Athletics	1962
Grimm, Gordon D.	Public Safety	1963
Grinwis, Gordon J.	Art	1961
Gromek, Elizabeth J.	Plant-Building Services	1967
Groulx, Roy W.	Industrial Engineering	1957
Gründler, Otto	Medieval Institute	1961
Hahn, Robert J.	History	1961
Hahnenberg, Willard J.	Music	1957
Hall, Rex E.	Engineering Technology	1961
Hamner, H. Nicholas	History	1956
Hardie, Nita H.	General Studies	1964
Hardie, Thomas C.	Music	1957
Harmon, Robert E.	Chemistry	1961
Harris, Rosa B.	Plant-Building Services	1966
Hartenstein, Fred V	Management	1959
Hartman, Beatrice	Communication Arts and Sciences	1955
Havens, Gail A.	Consumer Resources and Technology	1968
Hawks, Graham P.	History	1960
Haynes, William O.	Consumer Resources and Technology	1959
Heim, Marilyn Y.	Music	1965
Heinecke, Iris T.	Plant-Building Services	1966
Heinig, Edward J.	Education and Professional Development	1963
Heinig, Ruth M.	Communication	1964
Helgesen, Charles R.	Communication	1955
Heller, Charles F.	Geography	1961
Hendriksen, Daniel P.	Languages and Linguistics	1966
Hoikka, Larry C.	Aviation Sciences	1965
Holkeboer, Paul E.	Admissions	1955
Holland, Sarah R.	Davis Dining	1965
Horst, Oscar H.	Geography	1956
Horton, Owen, Jr.	Printing Services	1955
Houser, Thomas	Chemistry	1964
Howell, Buster C.	Plant-L/G Maintenance	1966
Hungerford, John G.	Operations	1955
Hutchings, Gilbert R.	Engineering Technology	1955
Iffland, Don C.	Chemistry	1956
Inselberg, Rachel M.	Education and Professional Development	1966
Jaksa, James A.	Communication	1967

Janes, Raymond	Paper and Printing Science and Engineering	1963
Jever, J. Art	Health, Physical Education and Recreation	1962
Johnson, Mamie T.	Plant-Custodial Services	1964
Jones, Donna J.	Valley 2 Dining	1960
Jones, Jack D.	Health, Physical Education and Recreation	1956
Kanzler, William H.	Education and Professional Development	1961
Karsten, David P.	Theatre	1967
Kaufman, Robert W.	Political Science	1959
Kazanowski, Fotoula	College of Arts and Sciences	1959
Kelley, Stanley W.	Employee Relations and Personnel (honorary member)	1968
Kelly, Sherry I.	University Budgets	1966
King, Dale D.	Mechanical Engineering	1957
Kirchherr, Eugene C.	Geography	1957
Kissel, Johannes A.	Foreign Languages and Literatures	1968
Kline, James E.	Paper and Printing Science and Engineering	1963
Koronakos, Chris	Psychology	1960
Kurzman, Karl	Plant-B/E Maintenance	1966
Laws, Donna	Plant-Building Services	1965
Leamy, Mary K.	Registration	1955
Lemanski, Patricia A.	Health, Physical Education and Recreation	1966
Lewis, David M.	Sociology	1962
Lielzuika, Aira	Academic Records	1960
Lindbeck, John R.	Engineering Technology	1957
Loew, Cornelius	Religion	1956
Lowe, James J.	Counseling Center	1965
Lowry, George C.	Chemistry	1968
Mann, Wayne C.	Archives	1963
Martin, John L.	Plant-L/G Maintenance	1967
Maze, Linda L.	Miller Auditorium	1967
McGinnis, Dorothy	Education and Professional Development	1941
McKeag, Dorinne	Counseling Center	1962
McNees, Betty	Davis Dining	1962
Metheany III, John	Art	1964
Miller, George S.	Education and Professional Development	1964
Miller, Paule	Languages and Linguistics	1961
Miner, Margie J.	Health, Physical Education and Recreation	1957
Morell, Gilbert W.	History	1956
Morrison, William F.	Finance and Commercial Law	1959
Motter, Vera A.	Logistical Services-Freight/Postal/Delivery	1965
Moulton, Helmi K.	Art	1960
Musser, Necia A.	Waldo Library	1962
Nadonly, James E.	Political Science	1959
Nagler, Robert	Chemistry	1956
Nantz, Don W.	College of Engineering and Applied Sciences	1952
Neill, James D.	Counseling Center	1959
Neschich, Richard	Marketing	1964
Niemi, Leo	Business Information Systems	1955
Olton, Roy	Political Science	1957
Oosterhouse, Harm	Mechanical Shop	1946

Osborne, Charles E.	Music	1957
Otteson, Conner P.	Marketing	1964
Overton, Harvey	Humanities	1955
Overton, Jean M.	Media Services	1955
Palmatier, Robert A.	Languages and Linguistics	1955
Parker, Arthur W., Jr.	Printing Services	1964
Passero, Richard N.	Geology	1966
Pattison, Dale P.	History	1963
Pelc, Ronald J.	Office of Registrar	1964
Peterson, Robert H.	Residence Hall Facilities	1965
Phillips, Claude S.	Political Science	1957
Pippen, Sally V.	Office of Dean of Students	1964
Plano, Jack C.	Political Science	1952
Powers, Dolores F.	Henry/Hoekje/Bigelow Dining Services	1965
Provancher, John R.	Waldo Library	1966
Pruis, Rodger H.	Bernhard Center	1963
Pugh, David G.	English	1955
Pulaski, Richard	Philosophy	1966
Rakloviits, Richard F.	Health, Physical Education and Recreation	1957
Rappeport, Phyllis	Music	1966
Ray, Harold L.	Health, Physical Education and Recreation	1960
Rensenhouse, Barbara J.	Art	1959
Richards, Evan L.	History	1966
Richards, Jack L.	Printing Services	1952
Rife, Rolland K.	Plant-B/E Maintenance	1966
Risher, Charles G.	Consumer Resources & Technology	1958
Rizzo, John R.	Management	1969
Robin, Helenan S.	Political Science	1963
Robin, Stanley	Sociology	1965
Robinson, Sam	Plant-Building Services	1961
Rosegrant, William R.	English	1955
Ross, Martin H.	Sociology	1966
Ross, Myron H.	Economics	1961
Rossi, Ernest E.	Political Science	1966
Rossmann, Jules	Communication	1966
Rowekamp, William	Health, Physical Education and Recreation	1957
Sadler, David F.	English	1955
Schaeberle, F. W.	Accountancy	1965
Schlosser, Merle J.	Health, Physical Education and Recreation	1957
Schmaltz, Lloyd	Geology	1959
Schumann, Donna	Biological and Biomedical Science	1959
Schwemmin, Gerald C.	Office of Vice President for Business and Finance	1966
Scott, Frank S.	Industrial Engineering	1956
Sebaly, Avis L.	College of Education	1945
Sechler, Robert E.	Mathematics and Statistics	1959
Shafer, Robert L.	English	1959
Sheppard, John D.	Accountancy	1965
Sheridan, Gregory R.	Philosophy	1965
Smith, C. Edward	Plant-General Services	1965

Smith, Jean O.	Business Information Systems	1965
Smith, Josephine	Bookstore	1962
Smith, Robert, Jr.	Financial Aid	1966
Smith, Robert Jack	Anthropology	1963
Smith, Robert L.	Communication	1964
Smith, William K.	Waldo Library	1967
Soga, Michitoshi	Physics	1968
Stenesh, Jochanan	Chemistry	1963
Stephenson, Barbara J.	Health, Physical Education and Recreation	1960
Stevens, Fred L.	Health, Physical Education and Recreation	1946
Stevens, Marie L.	Student Services	1957
Stiefel, William J.	Mechanical and Aeronautical Engineering	1964
Stillwell, Levern H.	Theatre	1965
Swinehart, Peggy J.	Upholstery Shop	1966
Swinehart, Robert G.	Upholstery Shop	1964
Szalkowski, Anne O.	English	1955
Taylor, Mary L.	Waldo Library	1951
Therkildsen, Frances	Logistical Services-Freight/Postal/Delivery	1965
Trader, Robert	Marketing	1951
Turner, Walter	Mathematics and Statistics	1963
Tydeman, James E.	Business Library	1958
Tyndall, Dean	Occupational Therapy	1955
vanWestrienen, Donna R.	Consumer Resources and Technology	1968
Vollstedt, Paul	Plant-Building Services	1962
Vorenkamp, Vernon	Printing Services	1963
Vuicich, George	Geography	1968
Warren, H. Dale	Chemistry	1963
Watson, Archie E.	Education and Professional Development	1970
Welsh, Jack H.	Public Safety	1964
Wend, Jared S.	Economics	1955
Wester, Lloyd W.	Logistical Services-Freight/Postal/Delivery	1959
Westphal, Dale	Philosophy	1962
Wetnight, Robert B.	Finance	1951
White, Beverlee A.	Counseling Center	1966
Wood, Jack S.	Biological Sciences	1963
Woodward, Charles F.	Industrial and Manufacturing Engineering	1966
Work, Joseph	Music	1963
Wyman, Robert F.	Health, Physical Education and Recreation	1964
Youngblood, Gerald H.	Food Service	1957
Zastrow, Joyce	Music	1962
Zelder, Raymond E.	Economics	1964
Zinn, David C.	Economics	1965

Service Year Rosters

*The 1996 Rosters list the names of employees
with service anniversaries between October 1,
1995, and September 30, 1996, the cutoff date.*

Forty Years of Service

Hamelink, Richard A.

Printing Services

Thirty-five Years of Service

Bach, Shirley

Philosophy

Kirklin, James D.

Technical Services

Lawson, E. Thomas

Comparative Religion

Morris, William C.

Accountancy

Petro, John W.

Mathematics and Statistics

Robertson, Malcolm H.

Psychology

Thirty Years of Service

Carney, John M.

Art

Cha, Ellen S.

Waldo Library

Chase, Allen R.

Henry/Hoekje/Bigelow Dining Service

Clark, Thomas W.

Plant-L/G Maintenance

Cottrell, June S.

Theatre

Crowell, Ronald A.

Education and Professional Development

Dahlberg, Kenneth A.

Political Science

Davis, Ronald W.

History

DeLuca, Joseph V.

Art

Dickason, David G.

International Affairs

Dieker, Richard J.

Communication

Earhart, H. Byron

Comparative Religion

Falk, Nancy E.

Comparative Religion

Farris, Howard E.

Psychology

Gianakaris, Constantine J.

English

Gregory, Ross

History

Inselberg, Edgar

Biological Sciences

Isaak, Alan C.

Political Science

Johnston, Arnie

English

Kanamuelier, Joseph M.

Chemistry

Kelemen, Joseph A.

Electrical and Computer Engineering

King, Donald

Art

MacQueen, C. Bruce

University Counseling/Testing

Malott, Richard W.

Psychology

Oas, Donna B.

Speech Pathology and Audiology

Orlofsky, Fred C.

Health, Physical Education and Recreation

Page-Robin, Ellen

Community Health Services

Rhodes, Curtis

Art

Rice, David W.

Plant-B/E Maintenance

Rogers, Chester B.

Political Science

Ryder, Becky L.

Economics

Sackett, Ronald

Aviation Sciences

Sheldon, David

Music

Small, Thomas E.

English

Sonnad, Subhash R.

Sociology

Stillwell, Lyda J.

Theatre

Tarver, George, Jr.

Plant-B/E Maintenance

VanDePolder, James
Wagenfeld, Morton O.
Weber, Michael A.
Whaley, Robert L.
Yang, Kung-Wei

Industrial and Manufacturing Engineering
Sociology
Payroll
Music
Mathematics and Statistics

Twenty Years of Service

Allen, Diana K.
Birch, Gail Otis
Blades, Eva F.
Boos, Charles A.
Breur, Willard E.
Byers, Jacalyn K.
Campbell, Thomas E.
Carver, Charon Lynn
Case-Parris, Brenda L.
DeHollander, Phyllis A.
Dekker, Janice L.
DeYoung, Ruth A.
Duke, Marilyn V.
Fawley-Zehner, Christin
Ferguson, Jane V.
Fuqua, R. Wayne
Geisler, John S.
Hannah, Susan B.
Harik, Salim E.
Hoppel, John C.
Icabone, Dona G.
Issa, Ahmad D.
Latulippe, Laura
Mader, Ruth E.
Mathews, Gary
Meyer, Ruth Ann
Palm, Keith W.
Rafferty, Mark S.
Roseboom, Debra A.
Shouse, Barbara
Sluss, Nancy K.
Sopjes, Diane A.
Stevenson, Leo J.
Stonerock, Jean A.
Teichert, Lovette J.
Trembley, Edward L.
VanderMeer, Jon H.
Vernia, Mary Ann
Witt, David A.

Plant-Building Services
Music
Plant-Building Services
University Computing Services
Logistical Services-University Stores
Logistical Services-Freight/Postal/Delivery
Plant-L/G Maintenance
Family and Consumer Sciences
Student Employment Referral Service
Logistical Services-Freight/Postal/Delivery
Community Health Services
Valley #2 Dining Service
Academic Support Programs
Valley #1 Dining Service
Social Work
Psychology
Counselor Education and Counseling Psychology
Public Affairs and Administration
Economics
Plant-Administrative Services
Special Education
Finance and Commercial Law
CELCIS
Bernhard Center Office
Social Work
Mathematics and Statistics
Plant-L/G Maintenance
Valley #3 Dining Service
Art
International Student Services
Plant-L/G Maintenance
Burnham Dining Service
Finance and Commercial Law
Intercollegiate Athletics
CELCIS
Counselor Education and Counseling Psychology
Telecommunications
Plant-Building Services
Haworth College of Business

Fifteen Years of Service

Arnold, Kirk D.	Plant-Building Services
Ashley, Joan E.	Plant-B/E Maintenance
Ballard-Reid, Bernadette	Office of the President
Barrett, Ursula	Burnham Dining Service
Boyle, Tobias J.	University Computing Services
Breymann, Gus	Continuing Education
Brumbaugh, Stephen C.	Plant-Building Services
Cotton, Lillie B.	Admissions and Orientation
Dannison, Linda L.	Family and Consumer Sciences
Eichinger, Juleen A.	Medieval Institute
Evans, Eileen B.	Office of Vice President for Research
Fitzgerald, J. Gregory	Music Library
Flickinger, David B.	Logistical Services-Freight/Postal/Delivery
Foster, Laurie	Office of the Registrar
Gordon, Jaimy	English
Gray, Lila J.	Office of Vice President for Research
Grevenstuk, Ruth J.	Plant-Building Services
Guminski, Bonnie L.	Economics
Halderson, Dean W.	Physics
Halseth, Judith H.	Social Work
Hamilton, Lewis D.	Customer Account Services
Harrison, Jane L.	Admissions and Orientation
Hayden, Bradley	English
Hemphill, Barbara J.	Occupational Therapy
Hoffman, Emily P.	Economics
Horton, Sylvia R.	Valley #3 Dining Service
Hotchkiss, Lisa K.	Residence Hall Facilities
Jackson-Ekeledo, Cynthia D.	Sindecuse Health Center
Jennings, Lasena	Continuing Education
Kapenga, John A.	Computer Science
Kawka, Bernadine A.	Sindecuse Health Center
Keils, Randall M.	Technical Services
Kelly, Terrance P.	Plant-B/E Maintenance
Lipkin, Steven N.	Communication
Marion, Marilyn K.	Office of Vice President for Business and Finance
Martin, Dorothy J.	Office of the Registrar
McCord, J. Ilene	Continuing Education
McGurn, Arthur R.	Physics
Medendorp, Judith A.	Geography
Moonert, Judy L.	Music
Nelson, Nickola W.	Speech Pathology and Audiology
Nicholson, Sharon L.	University Computing Services
Northrop, Patrick L.	Waldo Library
Noyes, Marie T.	International Affairs
Page, Willie	Plant-Building Services
Reeser, Linda	Social Work
Reist, Rick A.	Plant-L/G Maintenance
Rickard, O'Ryan	Western Herald
Rozek, Judy A.	Logistical Services-Freight/Postal/Delivery

Schley, Jacqueline M.
Schubot, Ronald
Sharma, Rameshwar P.
Sherburn, Diana L.
Sonneville, Christina S.
Stamm, Carol L.
Stanford, John S.
Stolle, Hans
Strazdas, Peter J.
Thompson, Anne E.
Veeder, Sally A.
Waligora, Leslie
Warren, Mary Ann
Watson, Margaret J.
Wertkin, Robert A.
Wiseman, James G.

Sindecuse Health Center
University Computing Services
Mechanical and Aeronautical Engineering
Human Resources
International Affairs
Office of Provost and Vice President for Academic Affairs
Physician Assistant
Geography
Plant-B/E Maintenance
Human Resources
Evaluation Center
Logistical Services-Freight/Postal/Delivery
Plant-Building Services
Education Library
Social Work
Dining Services

Ten Years of Service

Alrick, Douglas T.	University Computing Services
Anderson, Ariel L.	Education and Professional Development
Annen, Patricia	College of Education
Aravamuthan, Raja G.	Paper and Printing Science and Engineering
Asefa, Wegayehu M.	Miller Auditorium
Barnes, David A.	Geology
Barnett, Denise L.	Plant-L/G Maintenance
Benton-Ollie, Terri	Lee Honors College
Bhatt, Pradipkumar N.	Sindecuse Health Center
Black, Carol J.	Student Financial Aid
Bosch, Ruth A.	Sindecuse Health Center
Bradeen, Shirleemae L.	WMU Bookstore
Brinkley, Ellen H.	English
Brinson, Doreen A.	Human Resources
Britt, Beverly K.	Geology
Brown, Laverne	Plant-Building Services
Buczowski, Daryl E.	University Computing Services
Buell, Frances A.	Plant-L/G Maintenance
Champion, Robert D.	Plant-L/G Maintenance
Chung, Sung G.	Physics
Claussen, Lee Ann	Blind Rehabilitation
Coe, Marilyn T.	Continuing Education
Colby, Gay A.	Public Safety
Cotton, William H.	WESTOPS
DeYoung, John D.	Plant-L/G Maintenance
Disbro, John	Plant-L/G Maintenance
Doremus, Linda J.	Bernhard Center Office
Duthie-Clark, Alice M.	Cistercian Studies
Duzan, Patricia	Foreign Languages and Literatures
Eskro, George M.	Residence Hall Life
Etter-Lewis, Gwendolyn	English
Farber, Paul	Education and Professional Development
Ghods, Ebrahim M.	Telecommunications
Gilchrist, Paula S.	University Computing Services
Hartman, Delores A.	Admissions and Orientation
Hayes, Sabine I.	Henry/Hoekje/Bigelow Dining Services
Hiltbrand, John R.	Physics
James, Shashanta	Student Financial Aid
Johns, Jeffery A.	Plant-B/E Maintenance
Johnson, Patricia A.	Plant-Building Services
Jones, Linda L.	External Affairs and Development
Kaempfer, Sharon L.	Lee Honors College
Kehew, Alan	Geology
Kennedy, Kenneth F.	Finance and Commercial Law
Kierepka, Lorna K.	Industrial and Manufacturing Engineering
Kiracofe, Norman M.	University Counseling/Testing
Kirk, Judith A.	Waldo Library
Klemm, Constance L.	Medieval Institute
Knox, Linda	Minority Affairs

Kroes, Nancy
Lee, Hanjoon
Leja, James A.
Lemley, Sandy S.
Locke, Vivian L.
Lukins, Tracy A.
MacDonald, Frederick F.
McMakin, Pamela J.
Merati, Parviz
Metwalli, Ali M.
Meyer, Pamela M.
Mihalko, Daniel
Morningstar, Nannette R.
Morrisson, Jo E.
Mossman, Todd K.
Oakes, Teresa J.
Paul, Keith
Pearson, Alfred L.
Peterson, Patricia A.
Peterson, Ruth H.
Phelps, Judith K.
Pomeroy, Maralee
Pratt, Mary E.
Pyle, Jana L.
Racine, John
Reck, Robert F.
Richardson, Elizabeth
Rotgers, William E.
Running-Johnson, Cynthia
Ruttinger, Jacquelyn
Schneidenbach, Paul R.
Scott, Julie A.
Seals, Peggy A.
Serafano, John D.
Sharp, Steven J.
Shriver, Ellsworth H.
Stickan, Sally L.
Stone, Judith F.
Stowers, Terri D.
Tanner, Ralph
Tolhurst, Lois J.
Van Hoeve, Judy E.
White, Debra R.
Wick, Sara L.
Wiener, William R.
Williams, Melanie K.
Wilson, Paul T.
Wolfinbarger, Steve M.
Wolfram, Raymond
Yahr, Edith M.

University Computing Services
Marketing
Blind Rehabilitation
WESTOPS
Biological Sciences
Plant-Administrative Services
Social Work
Plant-B/E Maintenance
Mechanical and Aeronautical Engineering
Finance and Commercial Law
Health, Physical Education and Recreation
Mathematics and Statistics
University Budgets
Campus Facility Development
University Computing Services
Continuing Education
Plant-B/E Maintenance
Plant-Building Services
Continuing Education
Paper and Printing Science and Engineering
Admissions and Orientation
Henry/Hoekje/Bigelow Dining Services
Plant-L/G Maintenance
English
University Computing Services
Marketing
Martin Luther King, Jr. Program
Haworth College of Business
Foreign Languages and Literatures
Art
University Computing Services
University Computing Services
Residence Hall Facilities
Paper and Printing Science and Engineering
Plant-Building Services
Paper and Printing Science and Engineering
Residence Hall Facilities
History
Waldo Library
Industrial and Manufacturing Engineering
Waldo Library
Sindecuse Health Center
Haworth College of Business
Waldo Library
Blind Rehabilitation
Office of Provost and Vice President for Academic Affairs
Education and Professional Development
Music
Campus Facility Development
Graduate College

