



Western Michigan University
ScholarWorks at WMU

Legacy Scout Tickets from Pure Oil Company

8-20-2021

**MGRRE_PureOilScoutTickets_Lobdell-Emery
Co._1_21141008110000**

MGRRE
Western Michigan University

Follow this and additional works at: <https://scholarworks.wmich.edu/pure>



Part of the Geology Commons

WMU ScholarWorks Citation

MGRRE, "MGRRE_PureOilScoutTickets_Lobdell-Emery Co._1_21141008110000" (2021). *Legacy Scout Tickets from Pure Oil Company*. 9183.
<https://scholarworks.wmich.edu/pure/9183>

This Document is brought to you for free and open access via ScholarWorks at WMU. It has been accepted for inclusion in Legacy Scout Tickets from Pure Oil Company by an authorized administrator of ScholarWorks at WMU. See the National Digital Catalogue - Science Base Catalogue for more collections submitted by MGRRE.



MGRRE_PureOilScoutTickets_Lobdell-Emery Co._1_21141008110000

API 21141008110000

Permit Number 811

Lease Name Lobdell-Emery Co.

Well Number 1

County Presque Isle

Township 35N

Range 02E

Section 26

2021 DEQ or Pure co_name Palmer, Caude F.

Pure Number 4

Latitude 45.38061

Longitude -84.14891

CORRECTED LOCATION

THE PURE OIL COMPANY

DATE Dec. 20, 1929

LOCATION REPORT

No. 4

STATE Michigan COUNTY Presque Isle DIST. North Allis SEC. 26 TOWN 35 N RANGE 2 E
 WELL No. 1 (SERIAL No. 4) FARM Lobdell-Emerly ACRES

NAME OF STREAM OR WATERS _____ QUADRANGLE SE₄¹ - SE₄¹OPERATOR C. F. Palmer Company MAP North Allis Twp., Presque Isle County

Feet from North Line of Farm

490 " " East " " "

220 " " South " " "

" " West " " "

Feet from North Line of Section

490 " " East " " "

220 " " South " " "

" " West " " "

LEGEND

O LOCATION

① RIG

⊕ DRILLING

⊗ GAS WELL

● OIL WELL

⊙ SMALL OIL WELL

⊕ DRY HOLE

⊕ DRY SHOWING OIL

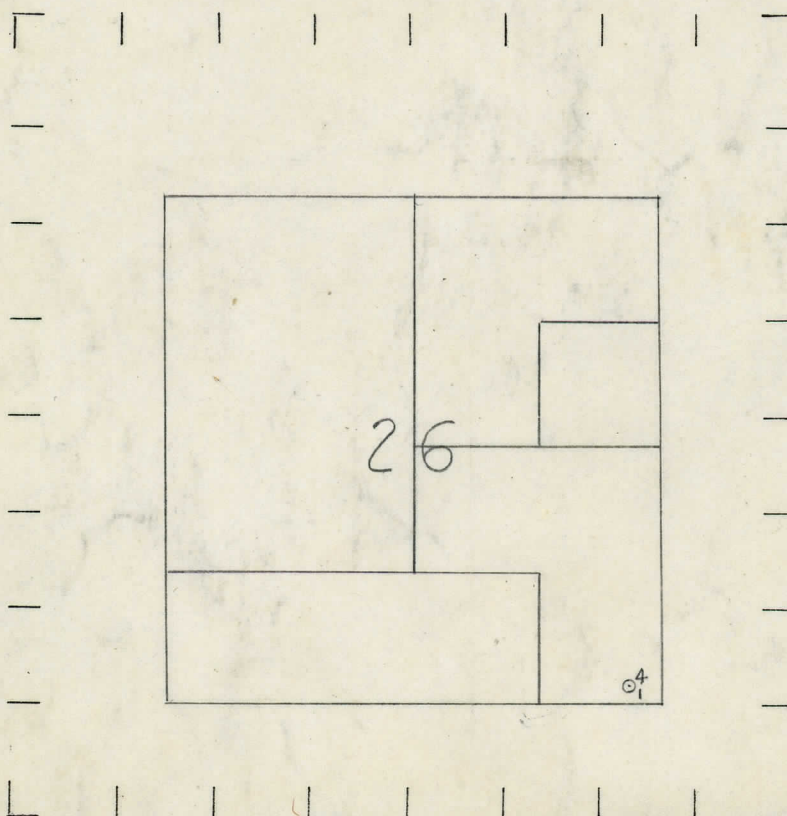
⊕ DRY SHOWING GAS

⊕ ABANDONED LOCATION

⊕ ABANDONED GAS WELL

⊕ ABANDONED OIL WELL

NOTE: Below make tracing from map, (when no map is obtainable make sketch) showing farm, center of section, this location with measurements and also wells, dry holes, or other locations in the vicinity of this location. Make copy to keep for reference and send original to Columbus office.

REMARKS: CORRECTED LOCATION

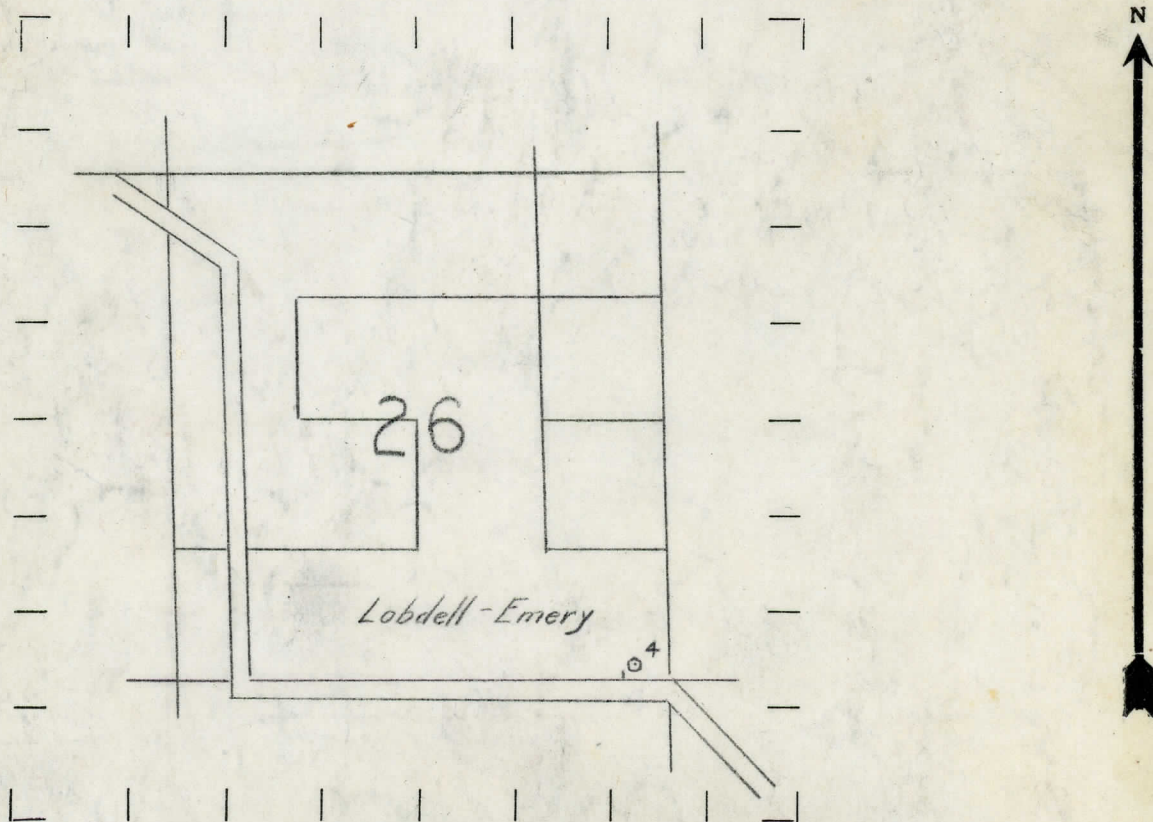
SIGNED _____

Superintendent or Foreman.

Feet from North Line of Farm
490 " " East " " "
220 " " South " " "
" " West " " "
Feet from North Line of Section
490 " " East " " "
220 " " South " " "
" " West " " "

- LEGEND**
- LOCATION
 - ① RIG
 - ⊕ DRILLING
 - ⊗ GAS WELL
 - OIL WELL
 - ⬮ SMALL OIL WELL
 - ✦ DRY HOLE
 - ✦ DRY SHOWING OIL
 - ✦ DRY SHOWING GAS
 - ⊗ ABANDONED LOCATION
 - ⊗ ABANDONED GAS WELL
 - ⬮ ABANDONED OIL WELL

NOTE: Below make tracing from map, (when no map is obtainable make sketch) showing farm, center of section, this location with measurements and also wells, dry holes, or other locations in the vicinity of this location. Make copy to keep for reference and send original to Columbus office.



REMARKS:

SIGNED

Superintendent or Foreman.

Michigan Producing DIVISION

COMPLETION RECORD

DATE Sept. 30, 1930. No. -4-

STATE Michigan COUNTY Presque Isle DIST. TWP. North Allis SEC. 36 TOWN 35 N RANGE 2 E
 WELL No. 1 (SERIAL No. 4) FARM Lebdell-Emerly ACRES _____
 NAME OF STREAM OR WATERS _____ QUADRANGLE SE - SE
 OPERATOR C.F. Palmer Co. MAP North Allis Twp., Presque Isle Co.
 LOCATION REPORT SENT IN (DATE) December 20, 1929.
 WELL STARTED (DATE) December 1929. WELL COMPLETED (DATE) August 28, 1930.

~~Oil Well~~

~~Gas Well~~

~~Dry Hole~~

~~Abandoned Well~~

CROSS OUT THREE OF THE ABOVE
WELL RECORD

DATE OF SHOT _____ NUMBER OF QUARTS _____

1st 24 HOURS PRODUCTION dry BARRELS OR FEET _____

2nd " " " " " " _____

3rd " " " " " " _____

4th " " " " " " _____

5th " " " " " " _____

SAND AND CASING

CASING SIZE	WEIGHT	CASING Feet Inches	SAND Name and Nature	TOP	BOTTOM	TOP PAY	BOTTOM PAY	SALT WATER
14"		191	Traverse	85 ?				
10"		390	Dundee	187				
8 1/2"		549	Monroe	440				
5 3/16"		1297	Sylvania	758				
			Niagra	1290				
			Salina	1403				
			Total depth	1403'				

REMARKS Show shale gas 187' oil show 245' & 740' water 602-645' good show oil & a little
gas 1310-1380'
(Log attached)