



Western Michigan University  
ScholarWorks at WMU

---

Legacy Scout Tickets from Pure Oil Company

---

8-20-2021

## MGRRE\_PureOilScoutTickets\_Clayton Township School District #3\_1\_na

MGRRE  
*Western Michigan University*

Follow this and additional works at: <https://scholarworks.wmich.edu/pure>



Part of the Geology Commons

---

### WMU ScholarWorks Citation

MGRRE, "MGRRE\_PureOilScoutTickets\_Clayton Township School District #3\_1\_na" (2021). *Legacy Scout Tickets from Pure Oil Company*. 22.

<https://scholarworks.wmich.edu/pure/22>

This Document is brought to you for free and open access via ScholarWorks at WMU. It has been accepted for inclusion in Legacy Scout Tickets from Pure Oil Company by an authorized administrator of ScholarWorks at WMU. See the National Digital Catalogue - Science Base Catalogue for more collections submitted by MGRRE.



---

## MGRRE\_PureOilScoutTickets\_Clayton Township School District #3\_1\_na

API na

Permit Number na

Lease Name Clayton Township School District #3

Well Number 1

County Arenac

Township 20N

Range 4E

Section 29

2021 DEQ or Pure co\_name unk

Pure Number 13

Latitude 44.1055341

Longitude -84.0173878

## THE PURE OIL COMPANY

DATE May 12 1928 LOCATION REPORT No. 13  
 STATE Michigan COUNTY Orenac DIST. Clayton SEC. 29 TOWN 20N RANGE 4E  
 WELL No. 1 (SERIAL No. 13) FARM Clayton Township School Dist. #3 ACRES  
 NAME OF STREAM OR WATERS \_\_\_\_\_ QUADRANGLE \_\_\_\_\_  
 OPERATOR Water Well MAP 4" = 1 mile

Feet from North Line of Farm

" " East " " "

" " South " " "

" " West " " "

Feet from North Line of Section

50 " " East " " "

1000 " " South " " "

" " West " " "

## LEGEND

O LOCATION

① RIG

⊕ DRILLING

⊗ GAS WELL

● OIL WELL

⬤ SMALL OIL WELL

⊕ DRY HOLE

⬤ DRY SHOWING OIL

⊕ DRY SHOWING GAS

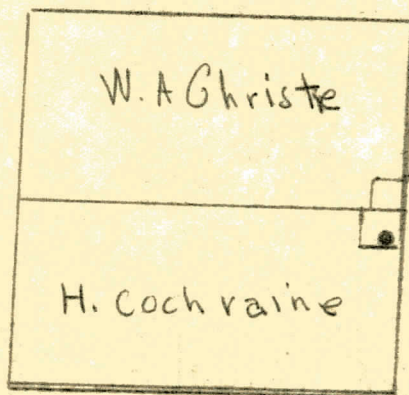
⊗ ABANDONED LOCATION

⬤ ABANDONED GAS WELL

⬤ ABANDONED OIL WELL

NOTE: Below make tracing from map (when no map is obtainable make sketch), showing farm, center of section, this location with measurements and also wells, dry holes, or other locations in the vicinity of this location. Make copy to keep for reference and send original to Columbus office.

Elevation

828

REMARKS:

SIGNED

Superintendent or Foreman.



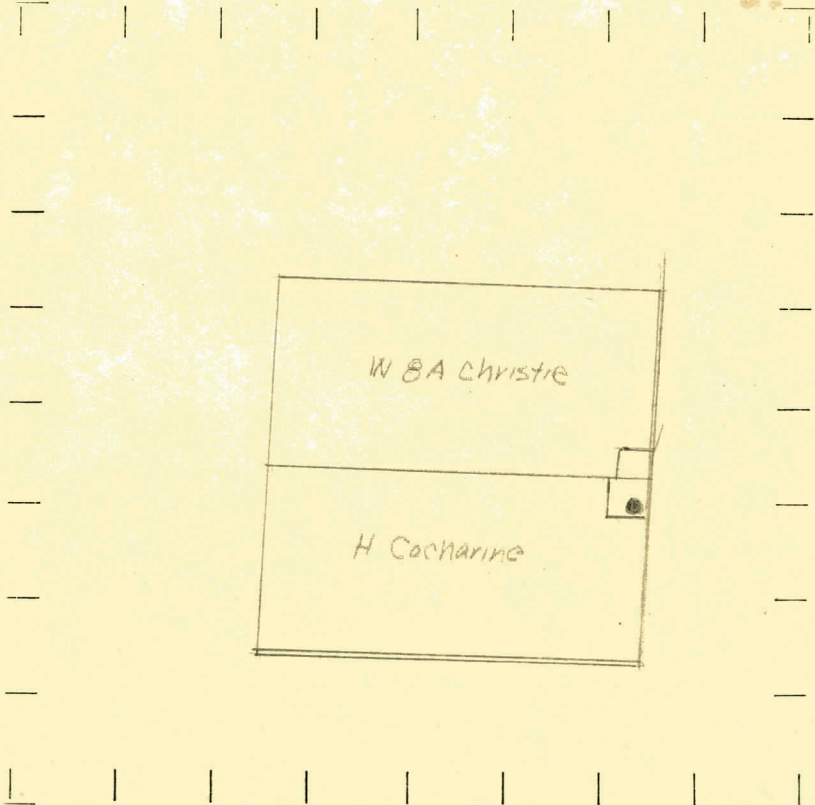
DATE \_\_\_\_\_ LOCATION REPORT No. \_\_\_\_\_  
STATE Mich COUNTY Alcona DIST. Clayton SEC. 29 TOWN T20N RANGE 4E  
WELL No. 1 (SERIAL No. 13) FARM Clayton Township School Dist 3 ACRES \_\_\_\_\_  
NAME OF STREAM OR WATERS Water well. QUADRANGLE \_\_\_\_\_  
OPERATOR \_\_\_\_\_ MAP 4" = 1 mile

Feet from North Line of Farm  
" " East " " "  
" " South " " "  
" " West " " "  
Feet from North Line of Section  
50 " " East " " "  
1000 " " South " " "  
" " West " " "

- LEGEND**
- |                  |                      |
|------------------|----------------------|
| ○ LOCATION       | ⬮ DRY HOLE           |
| ① RIG            | ⬮ DRY SHOWING OIL    |
| ⊕ DRILLING       | ⬮ DRY SHOWING GAS    |
| ⊗ GAS WELL       | ⬮ ABANDONED LOCATION |
| ● OIL WELL       | ⬮ ABANDONED GAS WELL |
| ⬮ SMALL OIL WELL | ⬮ ABANDONED OIL WELL |

NOTE: Below make tracing from map (when no map is obtainable make sketch), showing farm, center of section, this location with measurements and also wells, dry holes, or other locations in the vicinity of this location. Make copy to keep for reference and send original to Columbus office.

Elev  
828



REMARKS: Annual Report 1908 page 100

SIGNED

Superintendent or Foreman.



DATE May 12th 1928 **COMPLETION RECORD** No. 13  
STATE Michigan COUNTY Chenac DIST. Clayton SEC. 29 TOWN 20N RANGE 4E  
WELL No. 1 (SERIAL No. 13) FARM Clayton Township School Dist #3 ACRES

NAME OF STREAM OR WATERS \_\_\_\_\_ QUADRANGLE \_\_\_\_\_

OPERATOR Water Wheel MAP 4" = 1 mile

LOCATION REPORT SENT IN (DATE) May 12th 1928

WELL STARTED (DATE) \_\_\_\_\_ WELL COMPLETED (DATE) \_\_\_\_\_

## OIL WELL

~~GAS WELL~~

## DRY HOLE

ABANDONED WELL

**CROSS OUT THREE OF THE ABOVE  
WELL RECORD**

DATE OF SHOT \_\_\_\_\_ NUMBER OF QUARTS \_\_\_\_\_

1st 24 HOURS PRODUCTION				BARRELS OR FEET
2nd	"	"	"	" " "
3rd	"	"	"	" " "
4th	"	"	"	" " "
5th	"	"	"	" " "

## SAND AND CASING

[illegible]

REMARKS

**NOTE:—MAKE COPY TO KEEP FOR REFERENCE AND SEND ORIGINAL TO CHICAGO OFFICE. LIST MATERIAL CHARGEABLE TO WELL ON OTHER SIDE.**

**SIGNED**

**SUPT. OR FOREMAN**



DESCRIPTION	QUANTITY	MAKE	SIZE	MATERIAL
-------------	----------	------	------	----------

LIST OF MATERIAL CHARGEABLE TO WELL NO.

goff ~~Paul~~ Paul

Elev. 828 sec 29 Clayton Sp  
arenac Co.

Drift 286'

glacial 286 1/2 - 310 1/2

Hd Rock Co.) 310 1/2 - 318 1/2

Very soft shale 318 1/2 - 334 1/2

(mudstone?) 334 1/2 - 339 1/2