



Western Michigan University  
ScholarWorks at WMU

---

Legacy Scout Tickets from Pure Oil Company

---

8-20-2021

## MGRRE\_PureOilScoutTickets\_State (Pure core test 44)\_9\_None

MGRRE

*Western Michigan University*

Follow this and additional works at: <https://scholarworks.wmich.edu/pure>



Part of the Geology Commons

---

### WMU ScholarWorks Citation

MGRRE, "MGRRE\_PureOilScoutTickets\_State (Pure core test 44)\_9\_None" (2021). *Legacy Scout Tickets from Pure Oil Company*. 9213.

<https://scholarworks.wmich.edu/pure/9213>

This Document is brought to you for free and open access via ScholarWorks at WMU. It has been accepted for inclusion in Legacy Scout Tickets from Pure Oil Company by an authorized administrator of ScholarWorks at WMU. See the National Digital Catalogue - Science Base Catalogue for more collections submitted by MGRRE.



---

MGRRE\_PureOilScoutTickets\_State (Pure core test 44)\_9\_None

API None

Permit Number None

Lease Name State (Pure core test 44)

Well Number 9

County Roscommon

Township 23N

Range 01W

Section 27

2021 DEQ or Pure co\_name Pure Oil Company

Pure Number 32

Latitude 44.356217

Longitude -84.420511

THE PURE OIL COMPANY

LOCATION REPORT

No. 32

DATE March 21, 1939

STATE Mich COUNTY Roscommon DIST. Richfield SEC. 27 TOWN 23 N RANGE 1-W  
WELL No. 9 (SERIAL No. 32) FARM State (Pt. 99102) 2209 98 ACRES

NAME OF STREAM OR WATERS \_\_\_\_\_ QUADRANGLE SW-SW-SE.

OPERATOR Pure Oil Co. Core Test Map Richfield-Ros. Co.

\_\_\_\_\_ Feet from North Line of Farm

\_\_\_\_\_ " " East " " "

\_\_\_\_\_ " " South " " "

140 " " West " " "

\_\_\_\_\_ Feet from North Line of Section

\_\_\_\_\_ " " East " " "

260 " " South " " "

140 " " West " " 1/4

LEGEND

○ LOCATION

⊕ RIG

⊕ DRILLING

☀ GAS WELL

● OIL WELL

⊕ SMALL OIL WELL

⊕ DRY HOLE

⊕ DRY SHOWING OIL

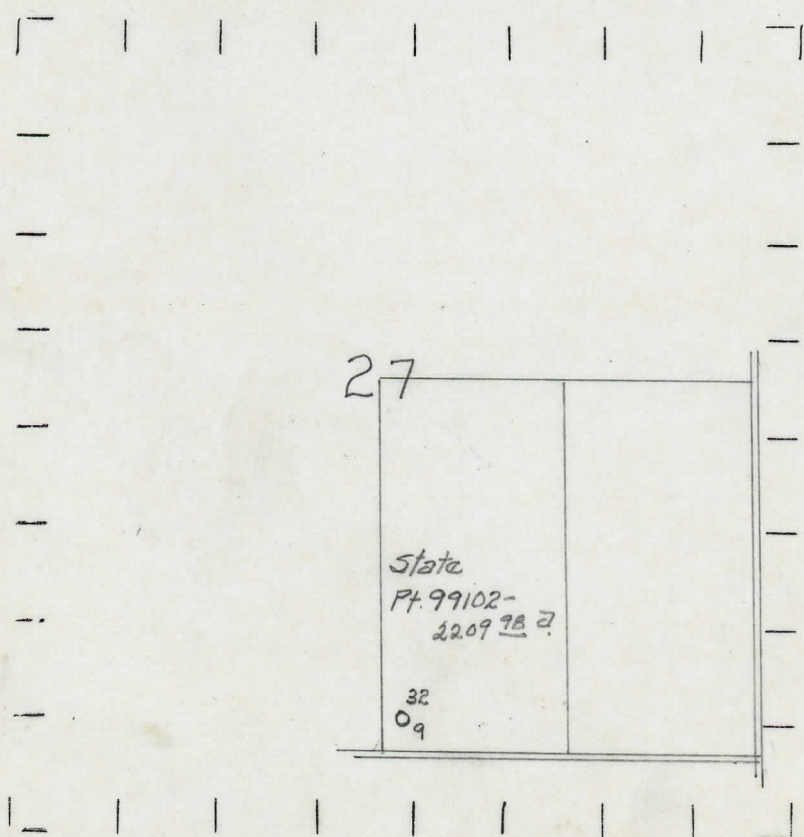
⊕ DRY SHOWING GAS

⊕ ABANDONED LOCATION

☀ ABANDONED GAS WELL

⊕ ABANDONED OIL WELL

NOTE: Below make tracing from map, (when no map is obtainable make sketch) showing farm, center of section, this location with measurements and also wells, dry holes, or other locations in the vicinity of this location.



REMARKS:

SIGNED

Superintendent or Foreman.