



Western Michigan University
ScholarWorks at WMU

Legacy Scout Tickets from Pure Oil Company

8-20-2021

MGRRE_PureOilScoutTickets_A. M. McDonell_1_na

MGRRE

Western Michigan University

Follow this and additional works at: <https://scholarworks.wmich.edu/pure>



Part of the Geology Commons

WMU ScholarWorks Citation

MGRRE, "MGRRE_PureOilScoutTickets_A. M. McDonell_1_na" (2021). *Legacy Scout Tickets from Pure Oil Company*. 23.

<https://scholarworks.wmich.edu/pure/23>

This Document is brought to you for free and open access via ScholarWorks at WMU. It has been accepted for inclusion in Legacy Scout Tickets from Pure Oil Company by an authorized administrator of ScholarWorks at WMU. See the National Digital Catalogue - Science Base Catalogue for more collections submitted by MGRRE.



MGRRE_PureOilScoutTickets_A. M. McDonell_1_na

API na

Permit Number na

Lease Name A. M. McDonell

Well Number 1

County Arenac

Township 19N

Range 5E

Section 22

2021 DEQ or Pure co_name not known

Pure Number 14

Latitude 44.0332082

Longitude -83.8568302

THE PURE OIL COMPANY

LOCATION REPORT

No. 114

DATE _____

STATE Mich COUNTY Amherst DIST. Amherst TWP. Amherst SEC. 22 TOWN 19N RANGE 5EWELL No. _____ (SERIAL No. 14) FARM A. M. McDonnell ACRES _____

NAME OF STREAM OR WATERS _____ QUADRANGLE _____

OPERATOR _____ MAP A = 1 mile

Feet from North Line of Farm

" " East " " "

" " South " " "

" " West " " "

Feet from North Line of Section

" " East " " "

" " South " " "

" " West " " "

LEGEND

O LOCATION

① RIG

⊕ DRILLING

⊗ GAS WELL

● OIL WELL

⬮ SMALL OIL WELL

⬮ DRY HOLE

⬮ DRY SHOWING OIL

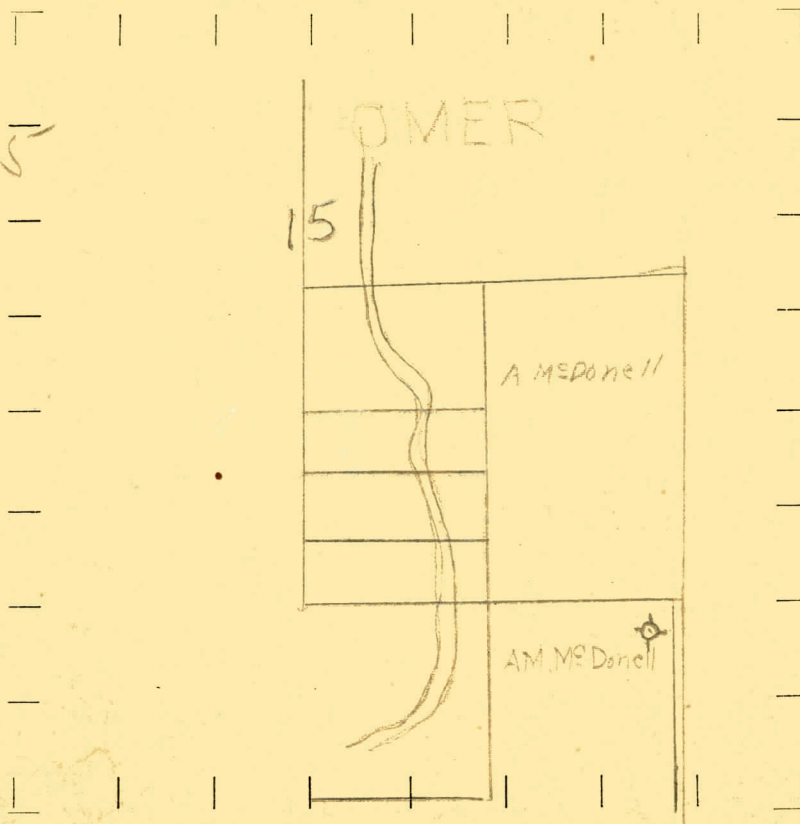
⬮ DRY SHOWING GAS

⬮ ABANDONED LOCATION

⬮ ABANDONED GAS WELL

⬮ ABANDONED OIL WELL

NOTE: Below make tracing from map (when no map is obtainable make sketch), showing farm, center of section, this location with measurements and also wells, dry holes, or other locations in the vicinity of this location. Make copy to keep for reference and send original to Columbus office.



REMARKS:

SIGNED

Superintendent or Foreman.

DATE May 2nd 1928 THE PURE OIL COMPANY
 LOCATION REPORT No. 14
 STATE Michigan COUNTY Arenac DIST. Arenac SEC. 22 TOWN 19N RANGE 5E
 PREC. U. M. M. B. Donell
 WELL No. 1 (SERIAL No. 14) FARM U. M. M. B. Donell ACRES
 NAME OF STREAM OR WATERS _____ QUADRANGLE _____
 OPERATOR Water Well MAP Arenac Sp Arenac Co

Feet from North Line of Farm

" " East " " "

" " South " " "

" " West " " "

200 Feet from North Line of Section

200 " " East " " "

" " South " " "

" " West " " "

LEGEND

○ LOCATION

① RIG

⊕ DRILLING

⊙ GAS WELL

● OIL WELL

⬮ SMALL OIL WELL

⬮ DRY HOLE

⬮ DRY SHOWING OIL

⬮ DRY SHOWING GAS

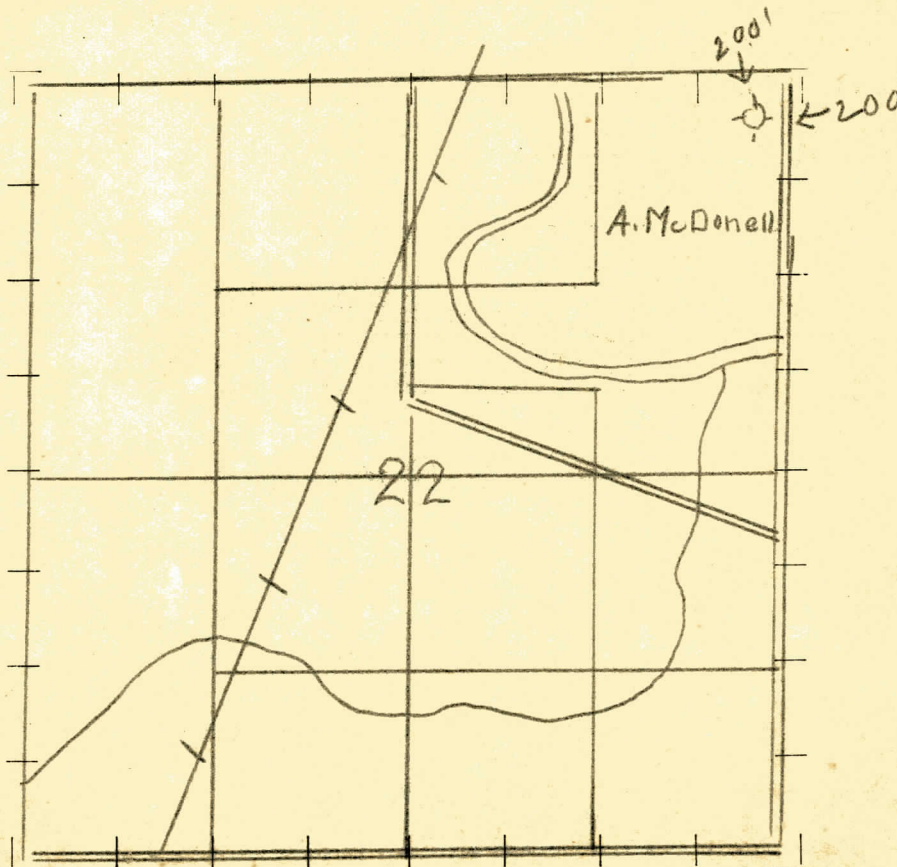
⬮ ABANDONED LOCATION

⬮ ABANDONED GAS WELL

⬮ ABANDONED OIL WELL

NOTE: Below make tracing from map (when no map is obtainable make sketch), showing farm, center of section, this location with measurements and also wells, dry holes, or other locations in the vicinity of this location. Make copy to keep for reference and send original to Columbus office.

Elevation
605



REMARKS:

SIGNED

Superintendent or Foreman.

THE PURE OIL COMPANY

THE PURE OIL COMPANY
Saginaw Michigan Special
COMPLETION REPAIR

DIVISION

COMPLETION RECORD

No. 14

DATE 11 May 21/27 1928

STATE Michigan COUNTY Alcona DIST. Alcona TWP. Alcona SEC. 22 TOWN 19N RANGE 5E

WELL No. 1 (SERIAL No. 14) FARM G. M. Mc Donell ACRES

NAME OF STREAM OR WATERS	QUADRANGLE
---------------------------------	-------------------

OPERATOR _____ MAP 4 = 1 mile

LOCATION REPORT SENT IN (DATE) May 21st 1928

WELL STARTED (DATE) _____ WELL COMPLETED (DATE) _____

GIL WELL

~~GAS-WELL~~

DRY HOFF

ABANDONED WET

**CROSS OUT THREE OF THE ABOVE
WELL RECORD**

DATE OF SHOT _____ NUMBER OF QUARTS _____

1st 24 HOURS PRODUCTION _____ BARRELS OR FEET _____

2nd " " " _____ " " "

3rd " " " " " "

4th " " "

5th " " " " " "

SAND AND CASING

[illegible]

REMARKS.

Flowing Fresh Water From White Sandstone - (MARSHAL) - 390-427

NOTE:—MAKE COPY TO KEEP FOR REFERENCE AND SEND ORIGINAL TO CHICAGO OFFICE. LIST MATERIAL CHARGEABLE TO WELL ON OTHER SIDE.

SIGNED

SUPT. OR FOREMAN