



Western Michigan University
ScholarWorks at WMU

Legacy Scout Tickets from Pure Oil Company

8-20-2021

MGRRE_PureOilScoutTickets_CLUKEY,
SARAH_1_21011031580000

MGRRE
Western Michigan University

Follow this and additional works at: <https://scholarworks.wmich.edu/pure>



Part of the Geology Commons

WMU ScholarWorks Citation

MGRRE, "MGRRE_PureOilScoutTickets_CLUKEY, SARAH_1_21011031580000" (2021). *Legacy Scout Tickets from Pure Oil Company*. 33.
<https://scholarworks.wmich.edu/pure/33>

This Document is brought to you for free and open access via ScholarWorks at WMU. It has been accepted for inclusion in Legacy Scout Tickets from Pure Oil Company by an authorized administrator of ScholarWorks at WMU. See the National Digital Catalogue - Science Base Catalogue for more collections submitted by MGRRE.



MGRRE_PureOilScoutTickets_CLUKEY, SARAH_1_21011031580000

API 21011031580000

Permit Number 3158

Lease Name CLUKEY, SARAH

Well Number 1

County Arenac

Township 20N

Range 6E

Section 8

2021 DEQ or Pure co_name DOUGLASS FRED M

Pure Number 38

Latitude 44.14327

Longitude -83.7788

DATE April 2, 1936

LOCATION REPORT

No. 38STATE MichiganCOUNTY ArenacDIST. TurnerTWP. TurnerSEC. 8TOWN 20 NRANGE 6 EWELL No. 1 (SERIAL No. 38) FARM

ACRES

NAME OF STREAM OR WATERS

QUADRANGLE SE SE SWOPERATOR Ernest Snyder, agent for Fred M. Douglas Map Turner-Arenac Turner Township, Arenac County

Feet from North Line of Farm

330 " " East " " "330 " " South " " "

" " West " " "

Feet from North Line of Section

330 " " East " 1/4 "330 " " South " " "

" " West " " "

LEGEND

○ LOCATION

① RIG

⊕ DRILLING

⊗ GAS WELL

● OIL WELL

⦿ SMALL OIL WELL

⊗ DRY HOLE

⦿ DRY SHOWING OIL

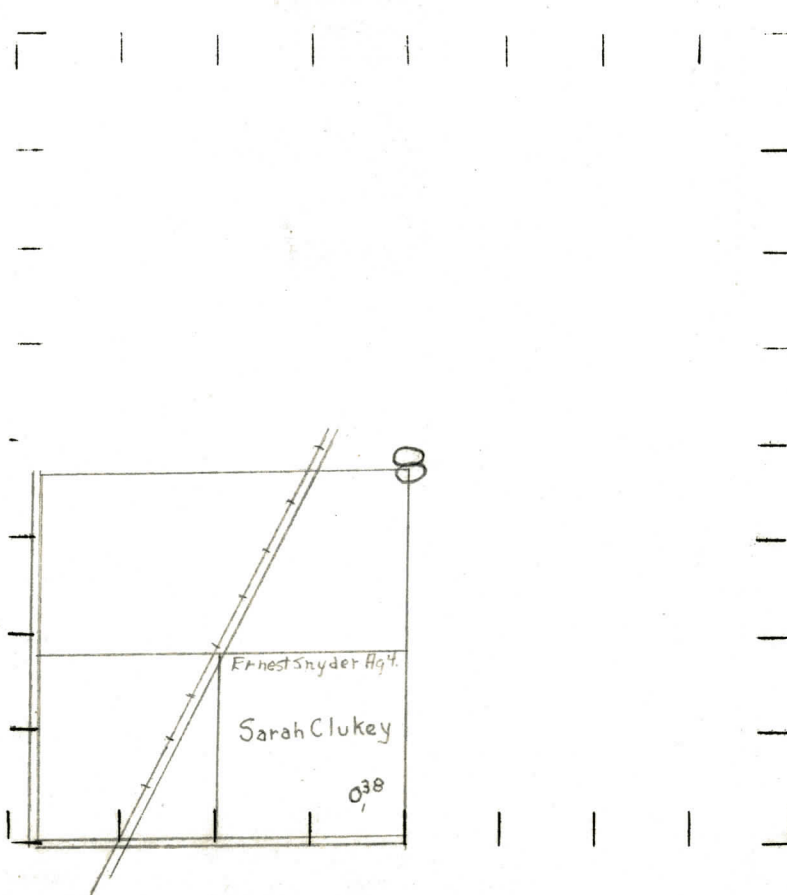
⊗ DRY SHOWING GAS

⦿ ABANDONED LOCATION

⦿ ABANDONED GAS WELL

⦿ ABANDONED OIL WELL

NOTE: Below make tracing from map, (when no map is obtainable make sketch) showing farm, center of section, this location with measurements and also wells, dry holes, or other locations in the vicinity of this location.



REMARKS:

SIGNED

Superintendent or Foreman.

