



Western Michigan University
ScholarWorks at WMU

Legacy Scout Tickets from Pure Oil Company

8-20-2021

MGRRE_PureOilScoutTickets_State of Michigan, State Roscommon_E-6_21143127980000

MGRRE

Western Michigan University

Follow this and additional works at: <https://scholarworks.wmich.edu/pure>



Part of the Geology Commons

WMU ScholarWorks Citation

MGRRE, "MGRRE_PureOilScoutTickets_State of Michigan, State Roscommon_E-6_21143127980000" (2021). *Legacy Scout Tickets from Pure Oil Company*. 9328.
<https://scholarworks.wmich.edu/pure/9328>

This Document is brought to you for free and open access via ScholarWorks at WMU. It has been accepted for inclusion in Legacy Scout Tickets from Pure Oil Company by an authorized administrator of ScholarWorks at WMU. See the National Digital Catalogue - Science Base Catalogue for more collections submitted by MGRRE.



**MGRRE_PureOilScoutTickets_State of Michigan, State
Roscommon_E-6_21143127980000**

API 21143127980000

Permit Number 12798

Lease Name State of Michigan, State Roscommon

Well Number E-6

County Roscommon

Township 21N

Range 03W

Section 28

2021 DEQ or Pure co_name Hilliard, Eugene

Pure Number 169

Latitude 44.18591

Longitude -84.68548

THE PURE OIL COMPANY LOCATION REPORT

Date November 20, 1946

A.F.E. No. _____

Division Mich. Producing District _____

State-Roscommon
State-Roscommon

Acres _____ Lease No. _____

Elevation _____ Well No. E-6 (Serial No. 169)

Quadrangle C NW Sec. 28

Twp. 21 N Rge. 3 W
Twp. Roscommon

Roscommon
Roscommon

Survey _____ County Roscommon

State Michigan

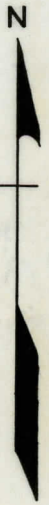
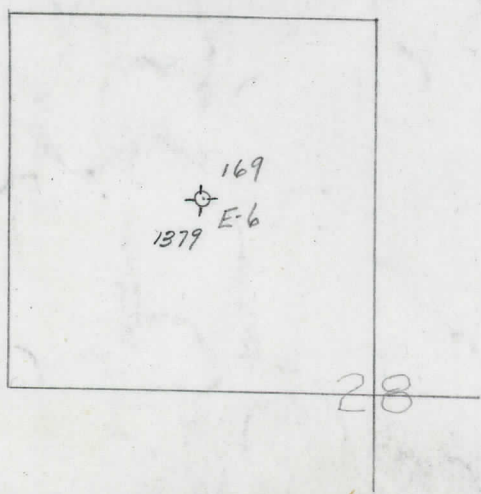
Operator Eugene Hilliard

Map Roscommon Township, Roscommon County

<u>1320</u>	<u>1320</u>	Feet from North Line of Lease
<u>1320</u>	<u>1320</u>	" " East " " "
_____	_____	" " South " " "
_____	_____	" " West " " "
_____	_____	Feet from North Line of Section
<u>1320</u>	<u>1320</u>	" " East " " "
<u>1320</u>	<u>1320</u>	" " South " " <u>1/4</u>
_____	_____	" " West " " "

LEGEND

- Gas Well
- Oil Well
- Gas - Distillate Well
- Dry Hole
- Dry Showing Oil
- Location
- Dry Showing Gas
- Abandoned Location
- Abandoned Gas Well
- Abandoned Oil Well
- Input Well



Remarks: _____ Scale _____

Submitted by CB
Civil Engineer

Approved by _____
Division Manager

Approved by _____
Vice-President - General Manager