



Western Michigan University  
ScholarWorks at WMU

---

Legacy Scout Tickets from Pure Oil Company

---

8-20-2021

**MGRRE\_PureOilScoutTickets\_Kellelhorn, H. E.\_unk\_unk**

MGRRE

*Western Michigan University*

Follow this and additional works at: <https://scholarworks.wmich.edu/pure>



Part of the Geology Commons

---

#### **WMU ScholarWorks Citation**

MGRRE, "MGRRE\_PureOilScoutTickets\_Kellelhorn, H. E.\_unk\_unk" (2021). *Legacy Scout Tickets from Pure Oil Company*. 9346.

<https://scholarworks.wmich.edu/pure/9346>

This Document is brought to you for free and open access via ScholarWorks at WMU. It has been accepted for inclusion in Legacy Scout Tickets from Pure Oil Company by an authorized administrator of ScholarWorks at WMU. See the National Digital Catalogue - Science Base Catalogue for more collections submitted by MGRRE.



---

MGRRE\_PureOilScoutTickets\_Kellelhorn, H. E.\_unk\_unk

API unk

Permit Number unk

Lease Name Kellelhorn, H. E.

Well Number unk

County Saginaw

Township 13N

Range 05E

Section 31

2021 DEQ or Pure co\_name Lowden et al

Pure Number 64

Latitude 43.4866704

Longitude -83.926145

THE PURE OIL COMPANY  
LOCATION REPORT

No. 64

DATE February 19, 1934

STATE Michigan COUNTY Saginaw DIST. TWP. Zilwaukee SEC. 31 TOWN 13 N RANGE 5 E

WELL No. (SERIAL No. 64) FARM H. E. Kellelhorn ACRES

NAME OF STREAM OR WATERS QUADRANGLE SW-NW-SW

OPERATOR Lowden et al MAP Zilwaukee Township, Saginaw County

Feet from North Line of Farm

“ “ East “ “ “

“ “ South “ “ “

“ “ West “ “ “

Feet from North Line of Section

“ “ East “ “ “

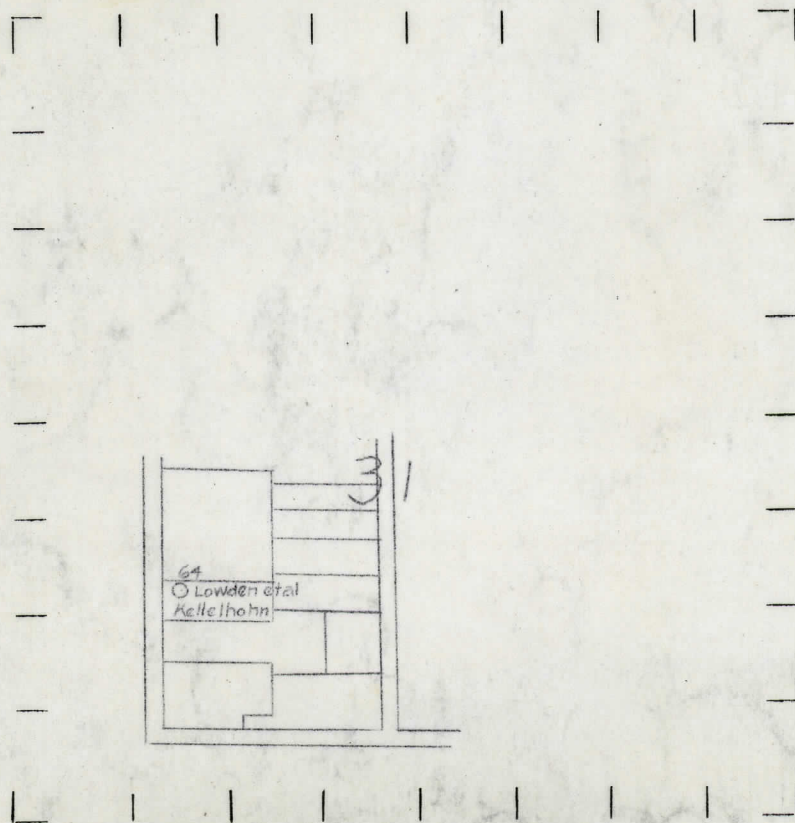
1600 “ “ South “ “ “

250 “ “ West “ “ “

LEGEND

- LOCATION
- ① RIG
- ⊕ DRILLING
- ⊛ GAS WELL
- OIL WELL
- ⬮ SMALL OIL WELL
- ⊛ DRY HOLE
- ⬮ DRY SHOWING OIL
- ⊛ DRY SHOWING GAS
- ⊛ ABANDONED LOCATION
- ⊛ ABANDONED GAS WELL
- ⬮ ABANDONED OIL WELL

NOTE: Below make tracing from map, (when no map is obtainable make sketch) showing farm, center of section, this location with measurements and also wells, dry holes, or other locations in the vicinity of this location. Make copy to keep for reference and send original to Columbus office.



REMARKS: Well started 9/1/26 - No information available.

SIGNED

*R. L. Yeager*  
Superintendent or Foreman.