



Western Michigan University
ScholarWorks at WMU

Legacy Scout Tickets from Pure Oil Company

8-20-2021

MGRRE_PureOilScoutTickets_Cuthperson_1_21145000339000

MGRRE

Western Michigan University

Follow this and additional works at: <https://scholarworks.wmich.edu/pure>



Part of the Geology Commons

WMU ScholarWorks Citation

MGRRE, "MGRRE_PureOilScoutTickets_Cuthperson_1_21145000339000" (2021). *Legacy Scout Tickets from Pure Oil Company*. 9356.

<https://scholarworks.wmich.edu/pure/9356>

This Document is brought to you for free and open access via ScholarWorks at WMU. It has been accepted for inclusion in Legacy Scout Tickets from Pure Oil Company by an authorized administrator of ScholarWorks at WMU. See the National Digital Catalogue - Science Base Catalogue for more collections submitted by MGRRE.



MGRRE_PureOilScoutTickets_Cuthperson_1_21145000339000

API 21145000339000

Permit Number 33

Lease Name Cuthperson

Well Number 1

County Saginaw

Township 12N

Range 04E

Section 11

2021 DEQ or Pure co_name Weidman, J.

Pure Number 213

Latitude 43.45096

Longitude -83.97558

THE PURE OIL COMPANY
LOCATION REPORT

Pure # 213
A.F.E. No. ~~1170~~

Date Sept. 28, 1943

Division Mich. Producing District _____ Lease J. Cuthperson

Acres _____ Lease No. _____ Elevation _____ Well No. 1 (Serial No. _____)

Quadrangle SW NW SW Sec. 11 Twp. 12 N Rge. 4 E ~~XXX~~ ~~XXX~~ Twp. Saginaw

Survey _____ County Saginaw State Michigan

Operator Lemunyen and Weideman Map Saginaw Township, Saginaw County

_____	Feet from North Line of Lease
_____	" " East " " "
<u>80</u>	" " South " " "
<u>250</u>	" " West " " "
_____	Feet from North Line of Section
_____	" " East " " "
_____	" " South " " "
_____	" " West " " "

LEGEND

- Location
- ☀ Gas Well
- Oil Well
- ☀ Gas - Distillate Well
- or ○ Dry Hole
- Dry Showing Oil
- with slash Dry Showing Gas
- with X Abandoned Location
- ☀ or ☀ with slash Abandoned Gas Well
- or ● with slash Abandoned Oil Well
- or ○ Input Well



Plugged and abandoned 7-21-43.

Scale _____

Remarks: _____

Submitted by _____ Civil Engineer Approved by _____ Division Manager

Approved by _____ Vice-President - General Manager

THE PURE OIL COMPANY
LOCATION REPORT

No.

DATE

STATE COUNTY *Sdg* DIST. *Sdg* TWP. *Sdg* SEC. *11* TOWN *12N* RANGE *4E*

WELL No. *1* (SERIAL No.) FARM *J. Cuthperson* 2.5^a ACRES

NAME OF STREAM OR WATERS *Lemunyen & Weideman* QUADRANGLE *See Geo. Sec*

OPERATOR MAP

Feet from North Line of Farm

" " East " " "

80

" " South " " "

250

" " West " " "

Feet from North Line of Section

" " East " " "

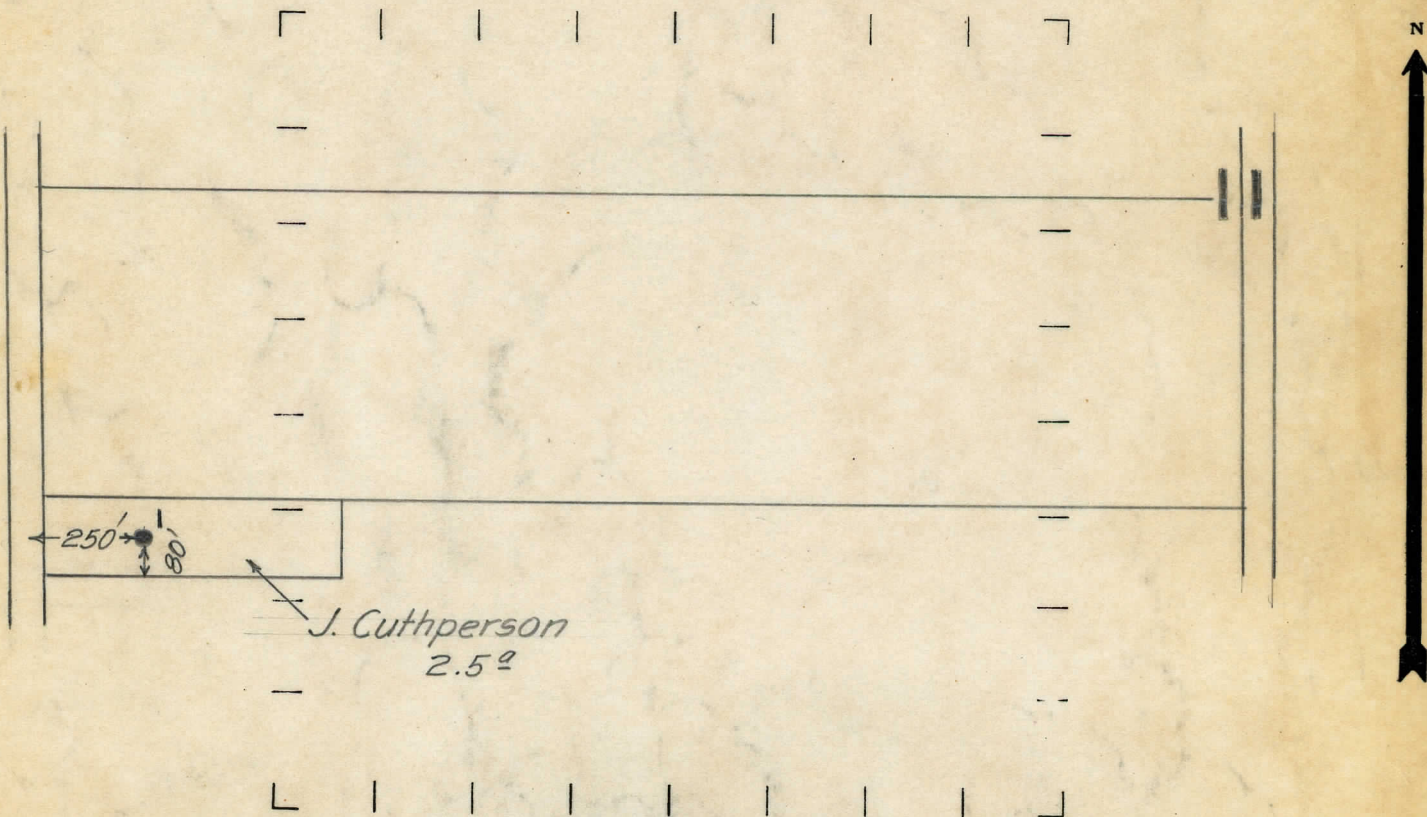
" " South " " "

" " West " " "

LEGEND

- LOCATION
- ⊕ RIG
- ⊕ DRILLING
- ☼ GAS WELL
- OIL WELL
- ⊕ SMALL OIL WELL
- ⊕ DRY HOLE
- ⊕ DRY SHOWING OIL
- ⊕ DRY SHOWING GAS
- ⊕ ABANDONED LOCATION
- ⊕ ABANDONED GAS WELL
- ⊕ ABANDONED OIL WELL

NOTE: Below make tracing from map, (when no map is obtainable make sketch) showing farm, center of section, this location with measurements and also wells, dry holes, or other locations in the vicinity of this location. Make copy to keep for reference and send original to Chicago office.



REMARKS:

.....
.....
.....

SIGNED

.....
Superintendent or Foreman.