



Western Michigan University  
ScholarWorks at WMU

---

Legacy Scout Tickets from Pure Oil Company

---

8-20-2021

## MGRRE\_PureOilScoutTickets\_Morse Getty Community\_2\_21145029810000

MGRRE  
*Western Michigan University*

Follow this and additional works at: <https://scholarworks.wmich.edu/pure>



Part of the Geology Commons

---

### WMU ScholarWorks Citation

MGRRE, "MGRRE\_PureOilScoutTickets\_Morse Getty Community\_2\_21145029810000" (2021). *Legacy Scout Tickets from Pure Oil Company*. 9436.  
<https://scholarworks.wmich.edu/pure/9436>

This Document is brought to you for free and open access via ScholarWorks at WMU. It has been accepted for inclusion in Legacy Scout Tickets from Pure Oil Company by an authorized administrator of ScholarWorks at WMU. See the National Digital Catalogue - Science Base Catalogue for more collections submitted by MGRRE.



---

**MGRRE\_PureOilScoutTickets\_Morse Getty Community\_2\_21145029810000**

API 21145029810000

Permit Number 2981

Lease Name Morse Getty Community

Well Number 2

County Saginaw

Township 10N

Range 06E

Section 20

2021 DEQ or Pure co\_name Smith Petroleum Company

Pure Number 327

Latitude 43.25293

Longitude -83.78321

## THE PURE OIL COMPANY

## LOCATION REPORT

Date November 24, 1945

A.F.E. No. \_\_\_\_\_

Division Mich. Producing District \_\_\_\_\_ Lease Morse-GettyAcres \_\_\_\_\_ Lease No. \_\_\_\_\_ Elevation \_\_\_\_\_ Well No. 2 (Serial No. 327)Quadrangle NW SW NE Sec. 20 Twp. 10 N Rge. 6 E ~~BRK~~ ~~BRK~~ Twp. Birch RunSurvey \_\_\_\_\_ County Saginaw State MichiganOperator Smith Petroleum Company Map Birch Run Township, Saginaw County

Feet from North Line of Lease

" " East " " "

" " South " " "

" " West " " "

Feet from North Line of Section

" " East " " "

" " South " " "

" " West " " "

## LEGEND

○ Location



Gas Well



Dry Showing Gas



Oil Well



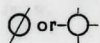
Abandoned Location



Gas - Distillate Well



Abandoned Gas Well



Dry Hole



Abandoned Oil Well



Dry Showing Oil



Input Well

Plugged and abandoned 9-17-45.

Total Depth 1545'.

N

Scale \_\_\_\_\_

Remarks: \_\_\_\_\_

Submitted by \_\_\_\_\_ Civil Engineer

Approved by \_\_\_\_\_ Division Manager

Approved by \_\_\_\_\_ Vice-President - General Manager



Date

Morse-Gatty

LOCATION REPORT  
THE BORE OIL COMPANY

V.E.E. No.

DATE 12-26-35

## LOCATION REPORT

No. 327

STATE Mich. COUNTY Saginaw DIST. Birch Run TWP. Birch Run SEC. 20 TOWN 10 N RANGE 6 E  
WELL No. 2 (SERIAL No. 327) FARM Morse-Gatty ACRES

NAME OF STREAM OR WATERS QUADRANGLE NW-SW-NE  
NW SW NE

OPERATOR Smith Petroleum Co. Map Birch Run Twp., Saginaw County  
Smith Pet. Co. Birch Run - Sag. Co.

Feet from North Line of Farm

330 330 " " East " " "

330 330 " " South " " "

330 330 " " West " " "

Feet from North Line of Section

990 990 " " East " " "

330 330 " " South " " "

330 330 " " West " " "

## LEGEND

O LOCATION

① RIG

⊕ DRILLING

☼ GAS WELL

● OIL WELL

⬮ SMALL OIL WELL

⊙ DRY HOLE

⬮ DRY SHOWING OIL

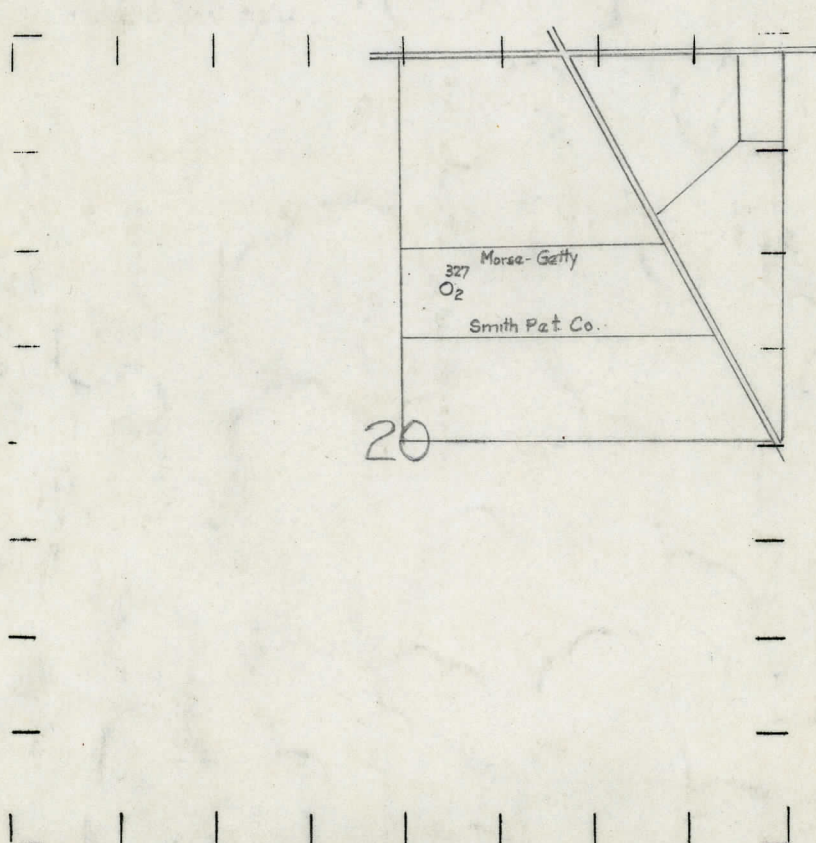
⊙ DRY SHOWING GAS

⊙ ABANDONED LOCATION

☼ ABANDONED GAS WELL

⬮ ABANDONED OIL WELL

NOTE: Below make tracing from map, (when no map is obtainable make sketch) showing farm, center of section, this location with measurements and also wells, dry holes, or other locations in the vicinity of this location.



REMARKS:

SIGNED

*R. L. Young*  
Superintendent or Foreman.



Date 1-16-36 No. 327  
State Mich. County Saginaw Dist Birch Run  
Twp. 20 Sec. 10 N Rge. 6 E  
Well No. 2 (Serial No.) 327 Farm Morse-Getty Acres           
Operator Smith Petroleum Co. by           
Information secured from Scouting Dept.  
Date well started 12-23-35 Date well completed 1-8-36 Elevation 638.1

# PRODUCTION RECORD

1st 24 hours natural 35 Bbls.

2nd 24 hours natural

Date of shot 1-9-36 No. of quarts 40 From 1526 to 1545 From to

Date of acid No. of gallons

1st 24 hours after shot  
1st 24 hours after shot Flowed 160 Bbls.

2nd 24 hours after acid

FORMATION AND CASING RECORD

[illegible][illegible]

Signed .....