



Western Michigan University  
ScholarWorks at WMU

---

Legacy Scout Tickets from Pure Oil Company

---

8-20-2021

## MGRRE\_PureOilScoutTickets\_Schwinck Packing\_3\_21145006469000

MGRRE

*Western Michigan University*

Follow this and additional works at: <https://scholarworks.wmich.edu/pure>



Part of the Geology Commons

---

### WMU ScholarWorks Citation

MGRRE, "MGRRE\_PureOilScoutTickets\_Schwinck Packing\_3\_21145006469000" (2021). *Legacy Scout Tickets from Pure Oil Company*. 9500.

<https://scholarworks.wmich.edu/pure/9500>

This Document is brought to you for free and open access via ScholarWorks at WMU. It has been accepted for inclusion in Legacy Scout Tickets from Pure Oil Company by an authorized administrator of ScholarWorks at WMU. See the National Digital Catalogue - Science Base Catalogue for more collections submitted by MGRRE.



---

**MGRRE\_PureOilScoutTickets\_Schwinck Packing\_3\_21145006469000**

API 21145006469000

Permit Number None

Lease Name Schwinck Packing

Well Number 3

County Saginaw

Township 12N

Range 04E

Section 13

2021 DEQ or Pure co\_name Schwinck, John

Pure Number N04

Latitude 43.4422013

Longitude -83.94354323

THE PURE OIL COMPANY  
LOCATION REPORT

13

No.

DATE.....

STATE..... COUNTY *Sag* DIST. *City of Sag.* TWP. SEC. TOWN RANGE

WELL No. *3* (SERIAL No. ~~278~~) *N4* FARM *Schminck Packing Co.* ACRES

NAME OF STREAM OR WATERS..... QUADRANGLE.....

OPERATOR *Schminck Oil Co.* MAP.....

..... Feet from North Line of Farm *Corp.*

*480* " " East " " "

" " South " " "

" " West " " "

..... Feet from North Line of Section

" " East " " "

" " South " " "

" " West " " "

**LEGEND**

○ LOCATION

① RIG

⊕ DRILLING

☼ GAS WELL

● OIL WELL

⦿ SMALL OIL WELL

⊖ DRY HOLE

⦿ DRY SHOWING OIL

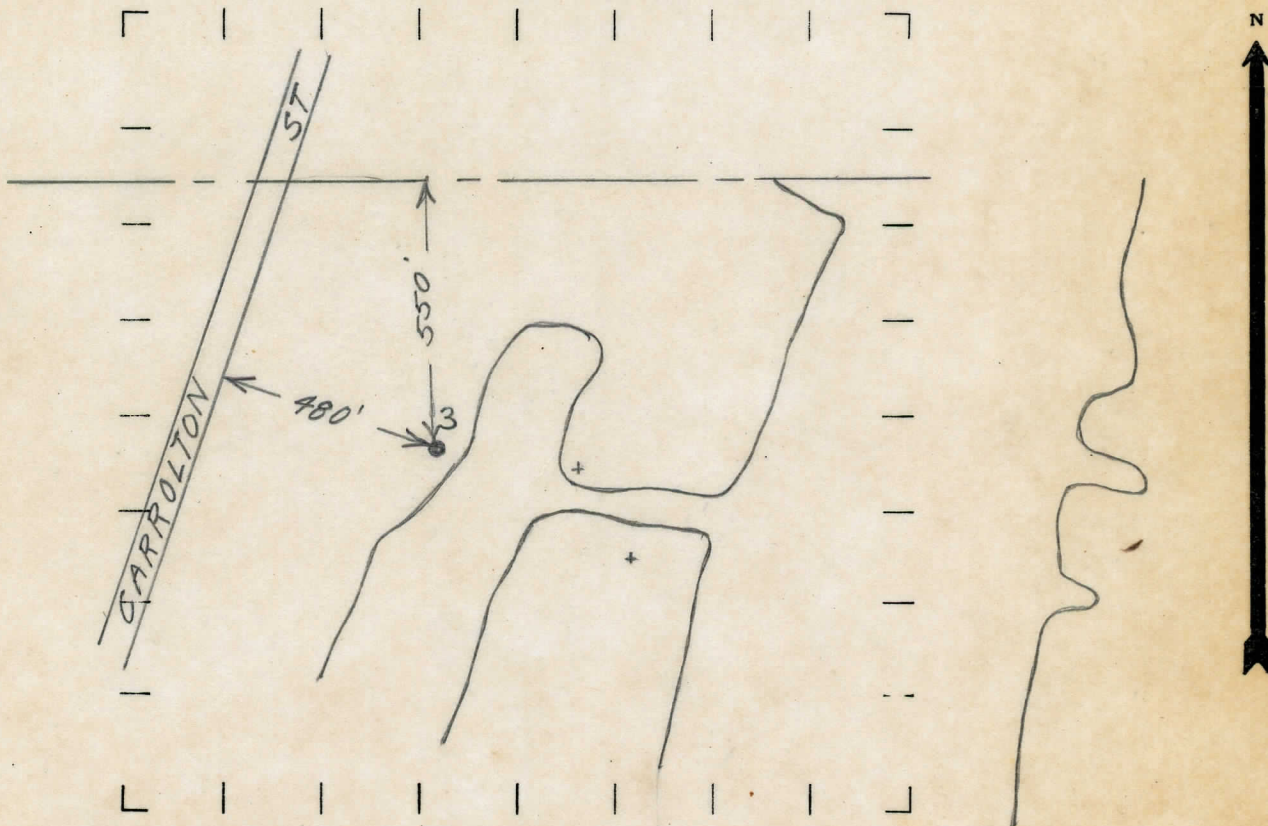
⊖ DRY SHOWING GAS

⊖ ABANDONED LOCATION

☼ ABANDONED GAS WELL

⦿ ABANDONED OIL WELL

NOTE: Below make tracing from map, (when no map is obtainable make sketch) showing farm, center of section, this location with measurements and also wells, dry holes, or other locations in the vicinity of this location. Make copy to keep for reference and send original to Chicago office.



REMARKS:

.....  
.....

SIGNED

Superintendent or Foreman.