



Western Michigan University
ScholarWorks at WMU

Legacy Scout Tickets from Pure Oil Company

8-20-2021

MGRRE_PureOilScoutTickets_Ace Park_2_21145000079000

MGRRE

Western Michigan University

Follow this and additional works at: <https://scholarworks.wmich.edu/pure>



Part of the Geology Commons

WMU ScholarWorks Citation

MGRRE, "MGRRE_PureOilScoutTickets_Ace Park_2_21145000079000" (2021). *Legacy Scout Tickets from Pure Oil Company*. 9512.

<https://scholarworks.wmich.edu/pure/9512>

This Document is brought to you for free and open access via ScholarWorks at WMU. It has been accepted for inclusion in Legacy Scout Tickets from Pure Oil Company by an authorized administrator of ScholarWorks at WMU. See the National Digital Catalogue - Science Base Catalogue for more collections submitted by MGRRE.



MGRRE_PureOilScoutTickets_Ace Park_2_21145000079000

API 21145000079000

Permit Number None

Lease Name Ace Park

Well Number 2

County Saginaw

Township 12N

Range 04E

Section 13

2021 DEQ or Pure co_name Fordney Petroleum Company, Midway Tool Company

Pure Number N16

Latitude 43.43703055

Longitude -83.94498045

THE PURE OIL COMPANY
LOCATION REPORT

No.

DATE

STATE 3 COUNTY Sag DIST. City of Sag. TWP. Acc Ball Park SEC. _____ TOWN _____ RANGE _____

WELL No. _____ (SERIAL No. N/16) FARM _____ ACRES _____

NAME OF STREAM OR WATERS _____ QUADRANGLE _____

OPERATOR Fordney Pet. Co. MAP _____

80 Feet from North Line of Farm Davenport St.

“ “ East “ “ “

“ “ South “ “ “

80 “ “ West “ “ “ Mary St Ext.

Feet from North Line of Section

“ “ East “ “ “

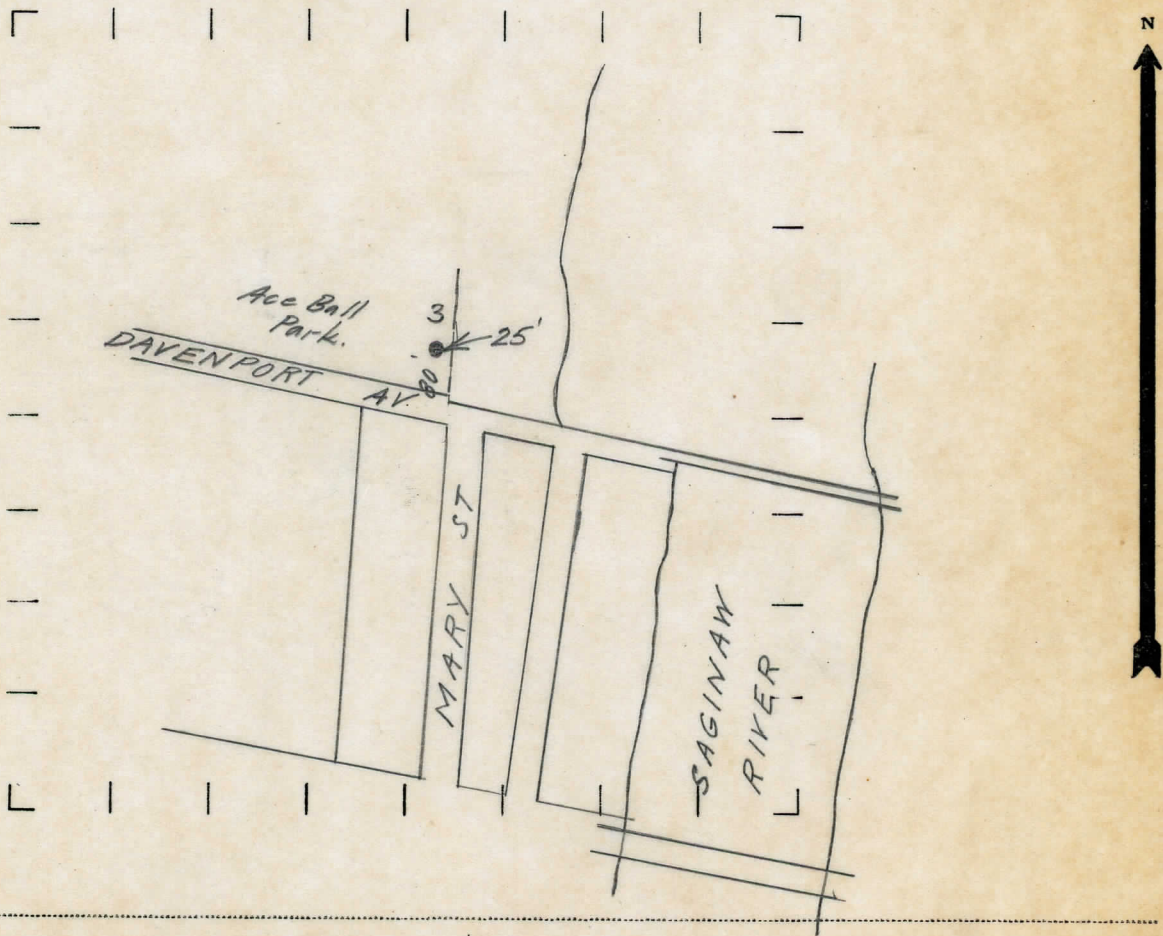
“ “ South “ “ “

“ “ West “ “ “

LEGEND

- LOCATION
- ⊙ RIG
- ⊕ DRILLING
- ⊗ GAS WELL
- OIL WELL
- ⊖ SMALL OIL WELL
- ⊛ DRY HOLE
- ◆ DRY SHOWING OIL
- ⊗ DRY SHOWING GAS
- ⊖ ABANDONED LOCATION
- ⊗ ABANDONED GAS WELL
- ⊖ ABANDONED OIL WELL

NOTE: Below make tracing from map, (when no map is obtainable make sketch) showing farm, center of section, this location with measurements and also wells, dry holes, or other locations in the vicinity of this location. Make copy to keep for reference and send original to Chicago office.



REMARKS: 206615.

SIGNED

Superintendent or Foreman.