



Western Michigan University  
ScholarWorks at WMU

---

Legacy Scout Tickets from Pure Oil Company

---

8-20-2021

**MGRRE\_PureOilScoutTickets\_Greencorn,  
Matilda\_1\_21145002539000**

MGRRE

*Western Michigan University*

Follow this and additional works at: <https://scholarworks.wmich.edu/pure>



Part of the Geology Commons

---

#### WMU ScholarWorks Citation

MGRRE, "MGRRE\_PureOilScoutTickets\_Greencorn, Matilda\_1\_21145002539000" (2021). *Legacy Scout Tickets from Pure Oil Company*. 9513.

<https://scholarworks.wmich.edu/pure/9513>

This Document is brought to you for free and open access via ScholarWorks at WMU. It has been accepted for inclusion in Legacy Scout Tickets from Pure Oil Company by an authorized administrator of ScholarWorks at WMU. See the National Digital Catalogue - Science Base Catalogue for more collections submitted by MGRRE.



---

**MGRRE\_PureOilScoutTickets\_Greencorn, Matilda\_1\_21145002539000**

API 21145002539000

Permit Number None

Lease Name Greencorn, Matilda

Well Number 1

County Saginaw

Township 12N

Range 04E

Section 14

2021 DEQ or Pure co\_name Fordney Petroleum Company

Pure Number N17

Latitude 43.43652

Longitude -83.9655

THE PURE OIL COMPANY  
LOCATION REPORT

No.

DATE.....

STATE.....COUNTY *Sag* DIST. *City of Sag.* SEC.....TOWN.....RANGE.....

WELL No. ....(SERIAL No. *N17*) FARM.....PREC. *Greenhorn* ACRES.....

NAME OF STREAM OR WATERS.....QUADRANGLE.....

OPERATOR *Fordney Pet. Co.* MAP.....

.....Feet from North Line of Farm

*60* " " East " " " *Reed St*  
*Bond St*

" " South " " "

" " West " " "

.....Feet from North Line of Section

" " East " " "

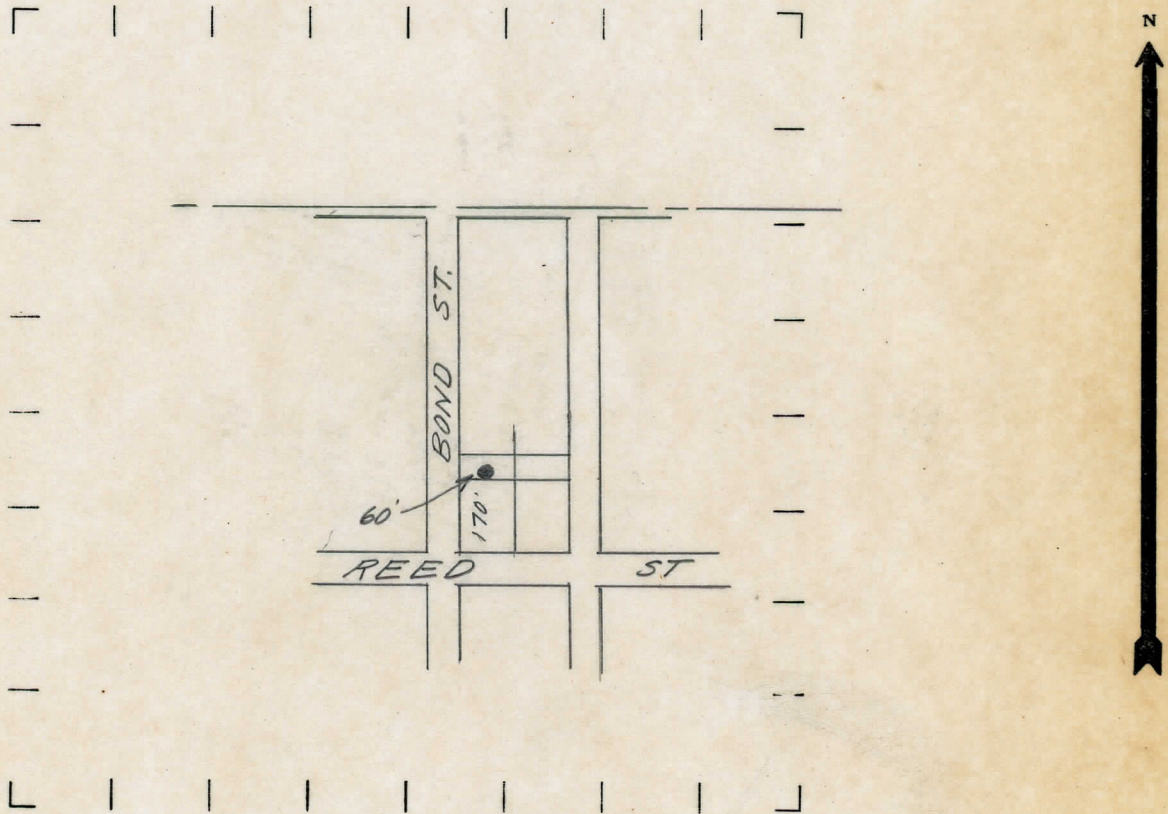
" " South " " "

" " West " " "

LEGEND

- LOCATION
- ① RIG
- ⊕ DRILLING
- ⊙ GAS WELL
- OIL WELL
- ⊙ SMALL OIL WELL
- ⊙ DRY HOLE
- ⊙ DRY SHOWING OIL
- ⊙ DRY SHOWING GAS
- ⊙ ABANDONED LOCATION
- ⊙ ABANDONED GAS WELL
- ⊙ ABANDONED OIL WELL

NOTE: Below make tracing from map, (when no map is obtainable make sketch) showing farm, center of section, this location with measurements and also wells, dry holes, or other locations in the vicinity of this location. Make copy to keep for reference and send original to Chicago office.



REMARKS:

.....  
.....  
.....

SIGNED

.....  
Superintendent or Foreman.