



Western Michigan University  
ScholarWorks at WMU

---

Legacy Scout Tickets from Pure Oil Company

---

8-20-2021

**MGRRE\_PureOilScoutTickets\_Spatz, John\_5\_21145000939000**

MGRRE

*Western Michigan University*

Follow this and additional works at: <https://scholarworks.wmich.edu/pure>



Part of the Geology Commons

---

#### **WMU ScholarWorks Citation**

MGRRE, "MGRRE\_PureOilScoutTickets\_Spatz, John\_5\_21145000939000" (2021). *Legacy Scout Tickets from Pure Oil Company*. 9518.

<https://scholarworks.wmich.edu/pure/9518>

This Document is brought to you for free and open access via ScholarWorks at WMU. It has been accepted for inclusion in Legacy Scout Tickets from Pure Oil Company by an authorized administrator of ScholarWorks at WMU. See the National Digital Catalogue - Science Base Catalogue for more collections submitted by MGRRE.



---

**MGRRE\_PureOilScoutTickets\_Spatz, John\_5\_21145000939000**

API 21145000939000

Permit Number None

Lease Name Spatz, John

Well Number 5

County Saginaw

Township 12N

Range 04E

Section 14

2021 DEQ or Pure co\_name Superior Oil Company

Pure Number N22

Latitude 43.4437185

Longitude -83.9655964

THE PURE OIL COMPANY  
LOCATION REPORT

No.

DATE .....

STATE ..... COUNTY *Say* DIST. *City of Say* TWP. *14* SEC. .... TOWN ..... RANGE .....

WELL No. *5* (SERIAL No. *N22*) FARM *Spatz* ACRES .....

NAME OF STREAM OR WATERS ..... QUADRANGLE .....

OPERATOR *Superior Oil Co.* MAP .....

*70'* Feet from North Line of Farm *Reed St.*

“ “ East “ “ “

“ “ South “ “ “

*240'* “ “ West “ “ “ *Oakley St.*

Feet from North Line of Section

“ “ East “ “ “

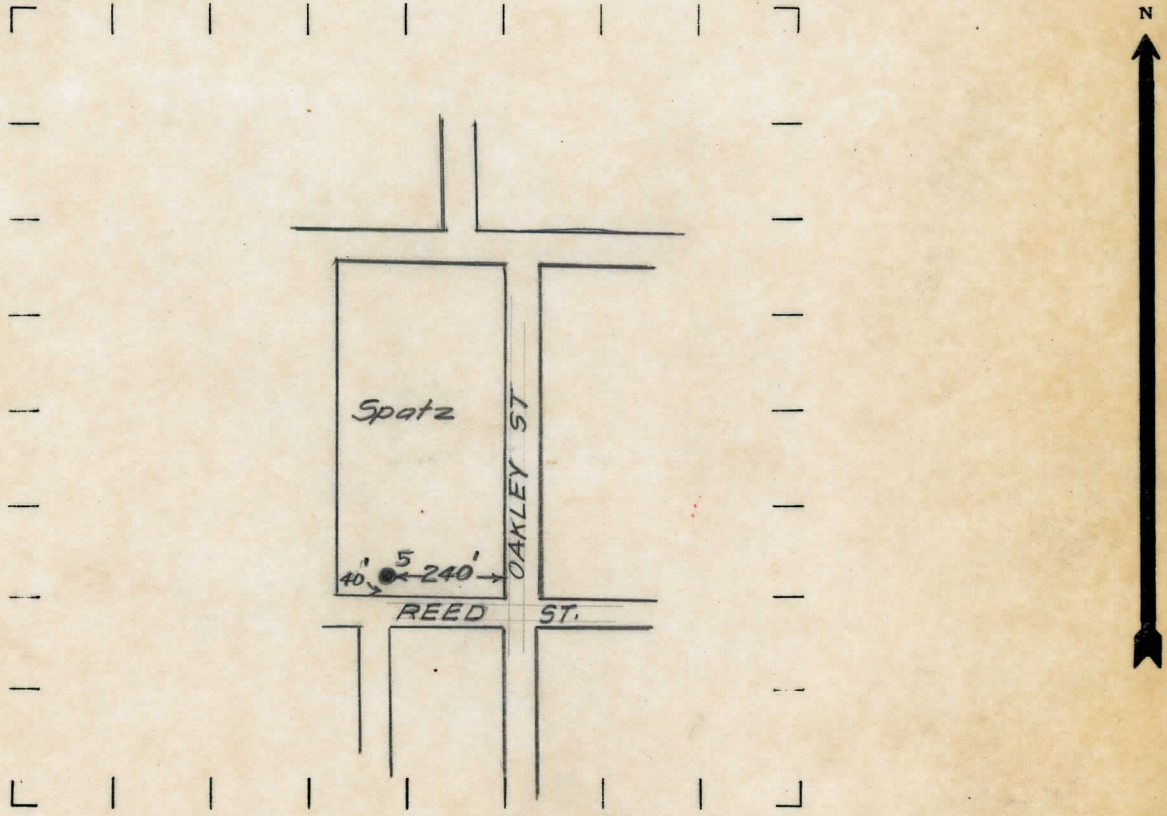
“ “ South “ “ “

“ “ West “ “ “

**LEGEND**

- LOCATION
- ① RIG
- ⊕ DRILLING
- ☼ GAS WELL
- OIL WELL
- ⦿ SMALL OIL WELL
- ⊖ DRY HOLE
- ⦿ DRY SHOWING OIL
- ⊖ DRY SHOWING GAS
- ⦿ ABANDONED LOCATION
- ☼ ABANDONED GAS WELL
- ⦿ ABANDONED OIL WELL

NOTE: Below make tracing from map, (when no map is obtainable make sketch) showing farm, center of section, this location with measurements and also wells, dry holes, or other locations in the vicinity of this location. Make copy to keep for reference and send original to Chicago office.



REMARKS:

.....  
.....  
.....

SIGNED

Superintendent or Foreman.