



Western Michigan University
ScholarWorks at WMU

Legacy Scout Tickets from Pure Oil Company

8-20-2021

MGRRE_PureOilScoutTickets_Brechtelsbauer, J. Conrad (Saginaw Prospecting No. 59)_6_21145002039000

MGRRE

Western Michigan University

Follow this and additional works at: <https://scholarworks.wmich.edu/pure>



Part of the Geology Commons

WMU ScholarWorks Citation

MGRRE, "MGRRE_PureOilScoutTickets_Brechtelsbauer, J. Conrad (Saginaw Prospecting No. 59)_6_21145002039000" (2021). *Legacy Scout Tickets from Pure Oil Company*. 9520.
<https://scholarworks.wmich.edu/pure/9520>

This Document is brought to you for free and open access via ScholarWorks at WMU. It has been accepted for inclusion in Legacy Scout Tickets from Pure Oil Company by an authorized administrator of ScholarWorks at WMU. See the National Digital Catalogue - Science Base Catalogue for more collections submitted by MGRRE.



MGRRE_PureOilScoutTickets_Brechtelsbauer, J. Conrad (Saginaw Prospecting No. 59)_6_21145002039000

API 21145002039000

Permit Number None

Lease Name Brechtelsbauer, J. Conrad (Saginaw Prospecting No. 59)

Well Number 6

County Saginaw

Township 12N

Range 04E

Section 13

2021 DEQ or Pure co_name Saginaw Prospecting Company

Pure Number N24

Latitude 43.4436898

Longitude -83.945946

THE PURE OIL COMPANY
LOCATION REPORT

No.

DATE

STATE COUNTY *Sag.* DIST. *Sag.* SEC. *13* TOWN RANGE

WELL No. *S.P. # 59* (SERIAL No. *N24*) FARM *Bretlesbauer* ACRES

NAME OF STREAM OR WATERS QUADRANGLE

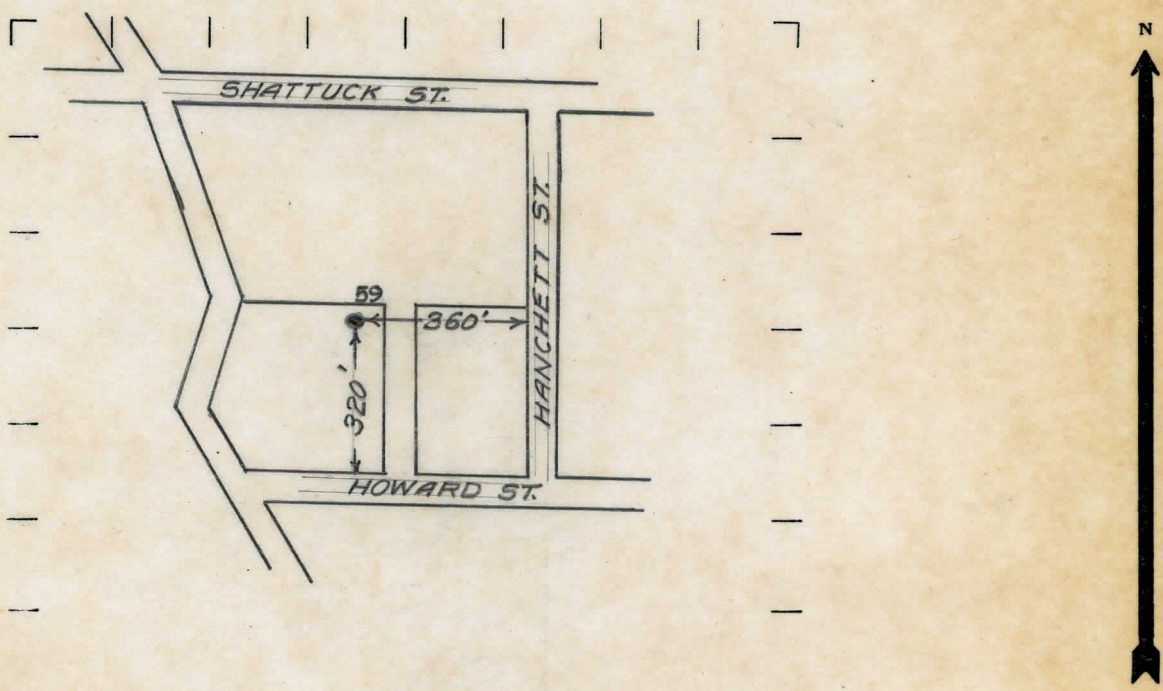
OPERATOR *Sag Pros Co.* MAP

320' Feet from North Line of Farm *Howard St.*
 " " East " " "
 " " South " " "
360 " " West " " *Hanchett St.*
 Feet from North Line of Section
 " " East " " "
 " " South " " "
 " " West " " "

LEGEND

- LOCATION
- ⊙ RIG
- ⊕ DRILLING
- ⊗ GAS WELL
- OIL WELL
- ⊙ SMALL OIL WELL
- ⊕ DRY HOLE
- ⊗ DRY SHOWING OIL
- ⊗ DRY SHOWING GAS
- ⊙ ABANDONED LOCATION
- ⊗ ABANDONED GAS WELL
- ⊙ ABANDONED OIL WELL

NOTE: Below make tracing from map, (when no map is obtainable make sketch) showing farm, center of section, this location with measurements and also wells, dry holes, or other locations in the vicinity of this location. Make copy to keep for reference and send original to Chicago office.



Berea 1821-1839

REMARKS:

T. of B. 1821
10 bbls.

SIGNED

Superintendent or Foreman.