



Western Michigan University
ScholarWorks at WMU

Legacy Scout Tickets from Pure Oil Company

8-20-2021

MGRRE_PureOilScoutTickets_Northmore Subdivision (Saginaw Prospecting No. 54)_5_21145006589000

MGRRE

Western Michigan University

Follow this and additional works at: <https://scholarworks.wmich.edu/pure>



Part of the Geology Commons

WMU ScholarWorks Citation

MGRRE, "MGRRE_PureOilScoutTickets_Northmore Subdivision (Saginaw Prospecting No. 54)_5_21145006589000" (2021). *Legacy Scout Tickets from Pure Oil Company*. 9525.
<https://scholarworks.wmich.edu/pure/9525>

This Document is brought to you for free and open access via ScholarWorks at WMU. It has been accepted for inclusion in Legacy Scout Tickets from Pure Oil Company by an authorized administrator of ScholarWorks at WMU. See the National Digital Catalogue - Science Base Catalogue for more collections submitted by MGRRE.



MGRRE_PureOilScoutTickets_Northmore Subdivision (Saginaw Prospecting No. 54)_5_21145006589000

API 21145006589000

Permit Number None

Lease Name Northmore Subdivision (Saginaw Prospecting No. 54)

Well Number 5

County Saginaw

Township 12N

Range 04E

Section 14

2021 DEQ or Pure co_name Saginaw Prospecting Company

Pure Number N29

Latitude 43.43864695

Longitude -83.9606842

THE PURE OIL COMPANY
LOCATION REPORT

No.

DATE.....

STATE..... COUNTY *Sag.* DIST. *City of Saginaw* TWP. *14* SEC. TOWN RANGE

WELL No. (SERIAL No. *N29*) FARM *Northmoor* ACRES

NAME OF STREAM OR WATERS QUADRANGLE

OPERATOR *Sag. Pros. Co.* MAP

Feet from North Line of Farm

120' " " East " " "
30' " " South " " *Louise St.*
" " West " " *Lewis St.*

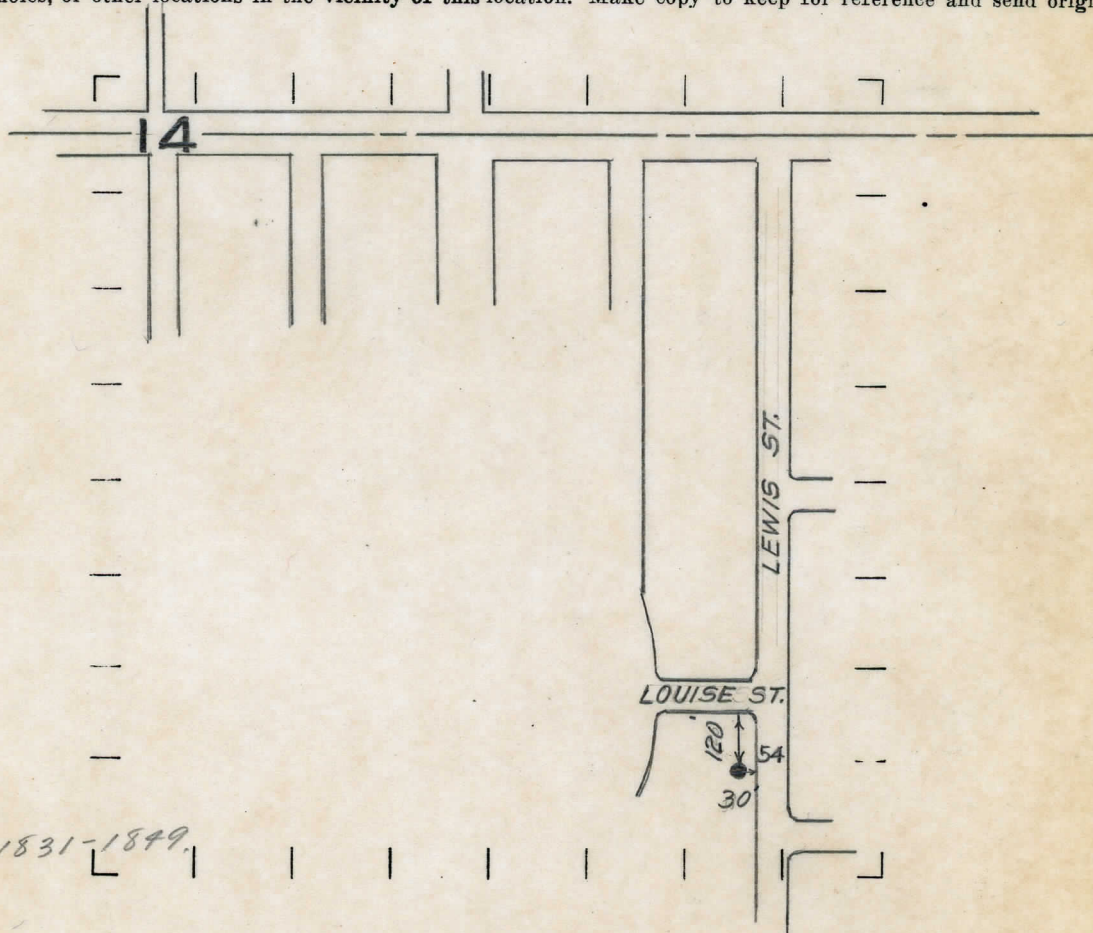
Feet from North Line of Section

" " East " " "
" " South " " "
" " West " " "

LEGEND

- LOCATION
- ⊙ BIG
- ⊕ DRILLING
- ⊗ GAS WELL
- OIL WELL
- ⊖ SMALL OIL WELL
- ◇ DRY HOLE
- ◆ DRY SHOWING OIL
- ⊗ DRY SHOWING GAS
- ⊖ ABANDONED LOCATION
- ⊗ ABANDONED GAS WELL
- ⊖ ABANDONED OIL WELL

NOTE: Below make tracing from map, (when no map is obtainable make sketch) showing farm, center of section, this location with measurements and also wells, dry holes, or other locations in the vicinity of this location. Make copy to keep for reference and send original to Chicago office.



Berea 1831-1849.

REMARKS:

T of B. 1831'
25 bbls.

SIGNED

Superintendent or Foreman.