



Western Michigan University  
ScholarWorks at WMU

---

Legacy Scout Tickets from Pure Oil Company

---

8-20-2021

## MGRRE\_PureOilScoutTickets\_Eddy Estate (Saginaw Prospecting No. 67)\_6\_21145000599000

MGRRE

*Western Michigan University*

Follow this and additional works at: <https://scholarworks.wmich.edu/pure>



Part of the Geology Commons

---

### WMU ScholarWorks Citation

MGRRE, "MGRRE\_PureOilScoutTickets\_Eddy Estate (Saginaw Prospecting No. 67)\_6\_21145000599000" (2021). *Legacy Scout Tickets from Pure Oil Company*. 9530.

<https://scholarworks.wmich.edu/pure/9530>

This Document is brought to you for free and open access via ScholarWorks at WMU. It has been accepted for inclusion in Legacy Scout Tickets from Pure Oil Company by an authorized administrator of ScholarWorks at WMU. See the National Digital Catalogue - Science Base Catalogue for more collections submitted by MGRRE.



---

**MGRRE\_PureOilScoutTickets\_Eddy Estate (Saginaw Prospecting No. 67)\_6\_21145000599000**

API 21145000599000

Permit Number None

Lease Name Eddy Estate (Saginaw Prospecting No. 67)

Well Number 6

County Saginaw

Township 12N

Range 04E

Section 24

2021 DEQ or Pure co\_name Yost Energy, Incorporated

Pure Number N34

Latitude 43.43599192

Longitude -83.94177927

THE PURE OIL COMPANY  
LOCATION REPORT

No.

DATE .....

STATE SP 67 COUNTY Sag DIST. City of Sag TWP. \_\_\_\_\_ SEC. \_\_\_\_\_ TOWN \_\_\_\_\_ RANGE \_\_\_\_\_  
 WELL No. \_\_\_\_\_ (SERIAL No. N34) FARM \_\_\_\_\_ ACRES \_\_\_\_\_  
 NAME OF STREAM OR WATERS \_\_\_\_\_ QUADRANGLE \_\_\_\_\_  
 OPERATOR Sag Pros Co. MAP \_\_\_\_\_

Feet from North Line of Farm

80 " " East " " " Davenport Av.  
 15 " " South " " " River  
 " " West " " "

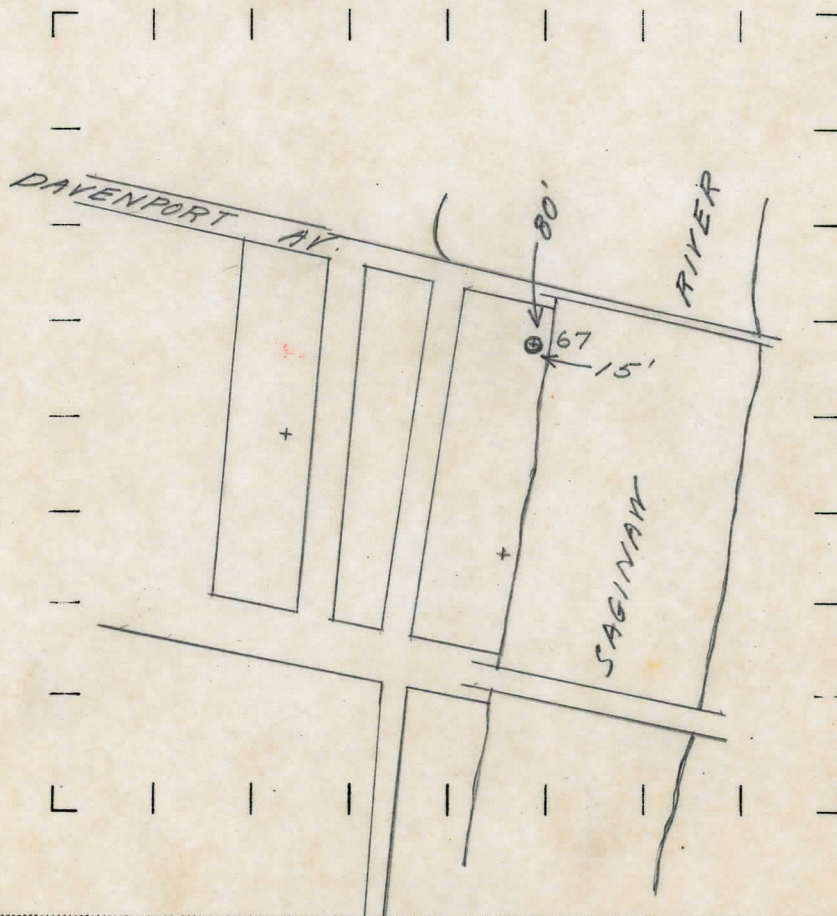
Feet from North Line of Section

" " East " " "  
 " " South " " "  
 " " West " " "

**LEGEND**

- LOCATION
- ⊕ DRY HOLE
- ① RIG
- ⊕ DRY SHOWING OIL
- ⊕ DRILLING
- ⊕ DRY SHOWING GAS
- ⊕ GAS WELL
- ⊕ ABANDONED LOCATION
- OIL WELL
- ⊕ ABANDONED GAS WELL
- ⊕ SMALL OIL WELL
- ⊕ ABANDONED OIL WELL

NOTE: Below make tracing from map, (when no map is obtainable make sketch) showing farm, center of section, this location with measurements and also wells, dry holes, or other locations in the vicinity of this location. Make copy to keep for reference and send original to Chicago office.



REMARKS:

.....  
 .....

SIGNED

Superintendent or Foreman.