

College of Health and Human Services

Items of Academic Interest

On March 12 and 13, the WMU College of Health and Human Services, the Holistic Health Care Program (HOL) and Sangha Yoga of Kalamazoo hosted Awakening the True Power of Yoga, SUN, MOON & FIRE, workshop sessions presented by Rod Stryker, the founder of ParaYoga® and widely considered one of the country's leading yoga and meditation teachers.



Rod Stryker

The event was sold out, with 120 people in attendance from all over the U.S. Stryker focused on practices, both physical and spiritual, that help an individual to become more calm and clear and reduce the physical and mental effects of stress, depression and anxiety. **Jennifer Langeland**, faculty specialist with HOL, represented WMU in the project.

Dr. Yvette Hyter, associate professor in the Speech Pathology and Audiology Department, and **Dr. W.F. Santiago-Valles**, associate professor of African Studies, received notification that their Cultural Connections: Causes of Globalization and Consequences on Systems study abroad project, in collaboration with Cheikh Anta Diop University in Senegal for 2012, has been approved by the Haenicke Institute for Global Education.



Dr. Yvette Hyter

Faculty and Staff Accolades

Michele Anderson, Ph.D., research associate and project coordinator with the Interdisciplinary Health Sciences Ph.D. Program, presented a poster at the International Neuropsychology Society's 39th Annual Conference in Boston, February 3-5, 2011. The presentation, Verbal Memory and Language Assessment, was based on her dissertation research. Also, Dr. Anderson and occupational therapy associate professor **Diane Dirette**, Ph.D., received Faculty Scholars Award funding and in-kind support from the HayGroup, the vendor for the Kolb Learning Style Inventory, for an interdisciplinary research project studying the effectiveness of memory strategies that are taught versus those that are self-generated.

Dr. Ann Chapleau, assistant professor in the WMU Occupational Therapy Department, co-authored an article that has been published in The Professional Case Management Journal, March 2011, Volume 16, Issue 2, Page 71-79. The article is entitled "Occupational Therapy Consultation for

Continued on next page

Table of Contents

College of Arts and Sciences	8
College of Aviation	9
College of Education and Human Development.	4
College of Engineering and Applied Sciences.	14
College of Fine Arts	7
College of Health and Human Services.	1
Extended University Programs	6

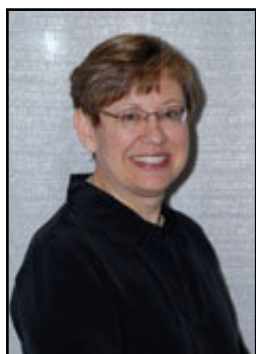
Graduate College	3
Haworth College of Business	13
Lee Honors College	6
Office of Institutional Effectiveness	10
The Evaluation Center	16
University Libraries	11

Case Managers in Community Mental Health." OT Professor **Debra Lindstrom Hazel**, Ph.D., is the first recipient of the American Occupational Therapy Foundation (AOTF)/Patterson Foundation award for Community Volunteerism. This award recognizes outstanding community volunteerism that meets the needs of disadvantaged individuals who would otherwise not be able to benefit from occupational therapy services.



Dr. Debra Lindstrom Hazel

Dr. Lindstrom Hazel's work with HomeFit was viewed by the selection committee as one of the applications best reflecting the overall purpose of the award. She will be recognized for her work and presented with a certificate and a check for \$1,000 to help defray expenses at the Annual American Occupational Therapy Association (AOTA) Conference and Exposition to be held in Philadelphia, Pennsylvania on April 16, 2011.



Sandra Glista

Sandra Glista, master faculty specialist of the Speech Pathology and Audiology Department was awarded a Support for Faculty Scholars Award (SFSa) for her collaborative work involving the Aphasia Communication Enhancement Program offered through the Charles Van Riper Language and Speech Clinic. The SFSa exists to advance the research mission of the University. It supports creative activities and research that may not lead to external funding, but that enhances and sustains the scholarly

reputation of WMU. Ms. Glista will attend the Adler Aphasia Center Consortium Meeting as an invited participant and develop national efforts supporting implementation and dissemination of group social-communication programs for individuals with aphasia, a language disorder resulting from stroke.



John P. Mellein

On April 8, **John P. Mellein**, an instructor at the School of Social Work (SSWK), will co-facilitate a presentation with **Carl Lewis** from WMU's Career and Student Employment Services on the topic of "How to Help Yourself in the Job Search Process" at the National Association of Social Workers (NASW) Michigan Chapter's annual conference in Dearborn, Michigan. Mellein also coordinated the SSWK's ninth annual trip to Lansing,

Michigan for Legislative Education and Advocacy Day (LEAD)

on March 17. Through this event, sponsored by the NASW Michigan Chapter, students learned how a bill becomes law, received tips on advocacy, and attended informative and relevant social work-related workshops. For the past three years, between 40 and 45 SSWK students have attended LEAD.

Mary Ann Stark, Ph.D., associate professor in the WMU Bronson School of Nursing, was recently named the Volunteer Co-chair for the National Research Advisory Panel of the Association of Women's Health Obstetric and Neonatal Nurses, a nonprofit membership organization that promotes the health of women and newborns.

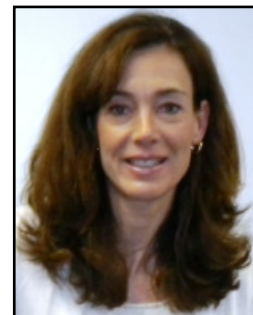


Dr. Mary Ann Stark

Student and Alumni Accolades

Audiology doctoral student **Tim Needham** was awarded a Graduate Student Research Grant in the amount of \$1,500 to support research as part of his audiology doctoral project.

CHHS alumna **Jennifer Brady-Johnson**, '95 and her colleague Adrienne Crook have received one of four of the 2011 From Excellent to Exceptional Grants by the Wayzata Public Schools Education Foundation in Wayzata, Minnesota. The curriculum based projects in the area of special education and literacy were chosen from ten projects that were submitted to the foundation for consideration. Ms. Brady-Johnson will receive more than \$8,000 to help fund her project named The Sensory Approach to Learning. The project will allow the professional development and training of five district staff in specific sensory strategies for use in three pilot classrooms. The sensory techniques will facilitate intervention support with learning disabilities, behavioral and emotional problems, and other developmental issues. The goal of the project is to better equip general education teachers in the classrooms.



Jennifer Brady-Johnson

Speech pathology and audiology student **Allyson Doyle** recently received an Undergraduate Research Excellence Award. The award provides students with opportunities for hands-on research or creative ideas experience with faculty members from the various colleges. Allyson is also the recipient of the Presidential Scholar Award for the Department of Speech Pathology and Audiology. The Presidential Scholar Award is WMU's highest honor presented to an undergraduate.

Elizabeth Brand, graduate of the WMU Bronson School of Nursing (BSON) and current Interdisciplinary Health Sciences doctoral student **Cathy Kothari**, co-authored an article that has been published in The Journal of Perinatal Education, winter 2011, Volume 20, Number 1, Page 36-44. The article is entitled "Factors Related to Breastfeeding Discontinuation between Hospital Discharge and Two Weeks Postpartum".

Dr. Mary Ann Stark, BSON associate professor co-authored and served as the faculty advisor on the project. The article discusses the challenges of breastfeeding and possible reasons why women do not continue to breastfeed after leaving the hospital.

WMU alumna **Lindsay (Bowman) Van Elk '09**, who is a current graduate student at the University of Iowa, was awarded the Ogdahl graduate scholarship in the amount of \$1000.

Graduate College

Items of Academic Interest

The Graduate Center for Research and Retention at WMU invites all graduate students to attend a working session on an Overview of SAS. This helpful workshop is designed to review and reinforce your prior learning and is not intended to supplement a formal course in introductory statistics. It will demystify the process, cultivate confidence, generate enthusiasm and inspire students to complete their research.

Mr. Lincoln Jiang, Doctoral Student, WMU Department of Statistics, and Doctoral Associate, Graduate Center for Research and Retention, will conduct the workshop, which will be held on Wednesday, March 23 from 9 a.m. to 12 p.m. in the Computer Laboratory, Room 1416 of the College of Health and Human Services. Students will gain familiarity with SAS language, acquire an introduction to basic SAS procedures, learn about data input, management, and transformation in SAS, as well as conduct basis analysis in SAS, including descriptive statistics, T-Tests, ANOVA, Regression, etc. For additional information call **Dr. Marianne Di Pierro**, Director, Graduate Center for Research and Retention, at (269) 387-8249.

Student and Alumni Accolades

Graduate Student Research and Travel Grants for January and February 2011 have been announced and the winners come from a wide variety of disciplines. Those who received research grants of up to \$1,000 are **Carol Beaver**, Biological Sciences; **Kazuhiro Iwamoto**, Biological Sciences; **Ashley McKinney**, Biological Sciences, and **Christopher Walmsley**, Psychology. **Ali Eshketi**, Electrical and Computer Engineering; **Jacob Job**, Biological Sciences; and **Timothy Needham**, Chemistry, received an interdisciplinary grant of up to \$1,500. **Kalan McPherson**, Chemistry, also received a supplemental international travel grant of up to \$600 funded

by the Graduate Student Advisory Committee. Those awarded Travel Grants of up to \$700 include **Dania Alsaïd**, Paper Engineering, Chemical Engineering, and Imaging; **Patrick Birkholz**, Biological Sciences; **Traci Brimhall**, English; **Steven Schultze**, Geography; **Emily Simms**, Geography; **Shino Toma**, Chemistry; and **Fehme Utkan**, Industrial and Manufacturing Engineering. **Michael Devivo**, Educational Leadership, Research, and Technology; **Heather Highhouse**, Counselor Education and Counseling Psychology, **Adam Pasen**, English; and **Bethany Warnaar**, Counselor Education and Counseling Psychology also were awarded a supplemental international travel grant of up to \$600 funded by the Graduate Student Advisory Council. We send our sincere congratulations to the winners whose outstanding academic work resulted in them being awarded these prestigious prizes.

Upcoming Events

Dr. Miguel Roig, Professor of Psychology at St. John's University in New York, has carried out research with his students in the area of academic dishonesty with an emphasis on student plagiarism. That work led him to investigate the problem of plagiarism, as well as other unethical writing practices, in scholarly and scientific writing. His current research interests also include the general area of authorship and related issues that fall within the scope of responsible research conduct. He will be on campus on Wednesday, March 16 speaking at the Fetzer Center. From 10 a.m. to 11 a.m. he will speak on "The Culture of Plagiarism: Lying, Cheating, and Stealing in Academe." From 12:45 p.m. to 3 p.m. he will speak on "Responsible Conduct of Research: Contextual Dimensions for Faculty and Graduate Students." Immediately following this lecture/discussion will be a debriefing from 3 to 3:30 p.m. Students and researchers will review definitions and cases of major forms of research misconduct with an emphasis on plagiarism and other authorship-related issues. They will also review other practices that constitute serious deviations from commonly accepted research practice and identify the consequences of research misconduct. Students and researchers will also identify "best practices" in the conduct of scientific and scholarly research. Dr. Roig's visit to WMU is presented by the Graduate Center for Research and Retention; for more questions please contact **Dr. Marianne Di Pierro**, Director, Graduate Center for Research and Retention at (269) 387-8249.

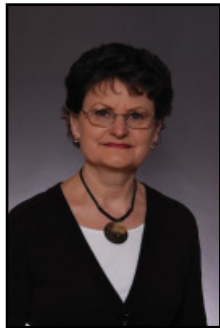
Graduate students interested in learning a step-by-step process for writing professional documents such as memos, reports, articles, white papers and email will benefit from attending "Professional Writing for Graduate Students." Conducted by Jan Andersen, owner and president of Beyond Words, Inc., a Midwest Consulting Group Affiliate, the workshop will also teach simple techniques for adding power and clarity to professional writing. Students will discover a proven process for breaking through "writer's block," as well as editing and proofreading tips and techniques. Ms. Andersen

Continued on next page

will also teach six tricks of the trade used by professional writers and editors. "Professional Writing for Graduate Students" will be held on Thursday, March 24 from 9 to 11 a.m. at the Fetzer Center on Western's campus.

College of Education and Human Development

Items of Academic Interest



Emerita Marlene Breu

Marlene Breu, professor emerita from the Department of Family and Consumer Sciences, and her co-author, Dr. Ronald Marchese of the University of Minnesota at Duluth, announce the publication of their book, *Splendor & Pageantry: Textile Treasures from the Armenian*

Orthodox Churches of Istanbul. Their ground-breaking study resulted in presentation of historical artifacts never before published. The book contains over 170 plates of textiles in the church collections, some of which are still used for the Divine Liturgy and others for display in the Patriarchal museum collection. Substantial dialogue about the objects' context within the social, cultural, political and economic parameters within which they were produced is also given. The book provides a brief historical background, inscriptions found on the objects, discussion of iconographies of the objects and description of their techniques of production. A reference catalogue provides detailed information on each piece included in the book. The book will be an excellent reference for art historians, textile historians, Armenian scholars, religious historians and others interested in minority populations within the Ottoman Empire. Dr. Breu's work was funded in part by the Faculty Research and Creative Activities Support Fund, Diether H. Haenicke Center for International Studies and the Eulalia Toms Fund for Family and Consumer Sciences. The books are available at amazon.com and Barnes & Noble.

Students enrolled in FCS 3300, Entrepreneurship in the Department of Family and Consumer Sciences, are working on a USDA sponsored project to explore entrepreneurial opportunities in rural communities. Course instructor **Dr. Barbara Frazier** is currently a principal investigator on a 3 year USDA Agricultural and Food Research Institute project to investigate community factors that lead to entrepreneurial success in rural areas. A key focus of the project is to discover ways that rural communities can attract and retain younger residents. As part of the project,

students are working with community economic development representatives and business leaders in Hastings, Michigan during the spring 2011 semester to learn what it takes to be successful as a rural entrepreneur. Students visited Hastings in January to learn more about the community, and completed team interviews with local entrepreneurs. Student teams are conducting extensive research and analysis of the community,

and presented their findings and recommendations to the Hastings business community on March 8. Presentations included students' recommendations on how to make the downtown business district more attractive to younger consumers. During the second half of the semester,

student teams will develop business plans for potential businesses that can attract new markets to the community later in the semester, and present to the Hastings community. The course project is scheduled to be widely disseminated via the eXtension.org website later this year.



Students presented findings to the Hastings business community

Faculty and Staff Accolades



Dr. Amos Aduroja

On March 6, **Dr. Amos Aduroja**, associate professor of Health Education in Health, Physical Education and Recreation, received a national award in Washington, DC from the Coalition of National Health Education Organizations. The award is titled the "2011 CNHEO Health Education Advocate Achievement Award" for exemplary leadership and dedication to health education advocacy. The coalition is a combination of the primary national professional health

education organizations: American School Health Association, American Association of Health Education, American College Health Association, American Public Health Association, Directors of Health Promotion and Education, Eta Sigma Gamma, Society for Public Health Education, Society of State Directors of Health, Physical Education and Recreation.

Professors **Debra Berkey** and **Kathy Conway** accompanied several intern teachers from the Department of Health,



Pictured is the group in the state capitol building in Lansing

Continued on next page

Physical Education and Recreation to Legislative Advocacy Day conducted by The Comprehensive School Health Coordinators' Association, Michigan Fitness Foundation, and Michigan Association for Health, Physical Education, Recreation, and Dance on February 16, 2011 in Lansing. Working with professionals from across the state, students had the opportunity to speak directly to Michigan legislators about current issues that impact the delivery of health and physical education in Michigan school districts.



WMU Students and Faculty Visit Social Entrepreneurs in New Orleans

Professors **Louann Bierlein Palmer**, Department of Educational Leadership, Research and Technology and **Timothy Palmer**, Department of Management, lead a group of 16 WMU business students to New Orleans for an alternative spring break. They met with top community leaders and conducted interviews with 15 different social entrepreneurs working to recreate the educational and social systems in the city. Service work was conducted for a school in the Lower 9th Ward, and video profiles of the various entrepreneurs are being developed for placement on the Social Entrepreneurs of New Orleans' (SENO) website. And of course, there was some time to play (and eat), including Mardi Gras parades, a swamp tour, seafood gumbo, crawfish, beignets, pralines, and king cake. More info on our blog at: <http://mgmt4000.blogspot.com>.



Dr. Gary Miron

Dr. Gary Miron, Professor in Evaluation, Measurement, and Research in the Department of Educational Leadership, Research and Technology has been invited to provide three lectures/presentations on school reforms during the month of March. March 7, the Michigan Education Summit in Novi, Michigan, March 15, the Forum for the Future of Public Education in Chicago, Illinois, and March 25 he delivered a policy briefing for legislators in Detroit, Michigan.



Drs. Brylinsky and Berkey with volunteers and participants at the unified basketball tournament

The students and faculty of the HPER Department helped to make the 2011 Unified Basketball & Bowling Tournament a success. This year, nearly 200 Special Olympics athletes and partners from the Kalamazoo area participated in the Unified Basketball and Bowling Tournaments held on March 12th. Unified Sports® is a registered program of Special Olympics that combines approximately equal numbers of athletes with and without intellectual disability on sports teams for training and competition. All Unified Sports® players, both athletes and special partners, are of similar age and matched sport skill ability. Kalamazoo County Area 16 Special Olympics would like to thank the WMU, especially Phi Epsilon Kappa, **Drs. Deb Berkey** and **Linda Law**, emerita, for their continued contributions to making Unified Sports programs possible for our athletes.



Interior Design graduating seniors Amanda VanDoornik, Andrea Smith, Sarah Bombard, Ashley McCullough, Allison Muir and Melissa Sauter showcased their work at their "Sprout" reception.

Student and Alumni Accolades

Thank you to everyone who came out and showed support to six of the graduating Interior Design Seniors during their 'Sprout' reception Friday, February 11th. The show displayed work that the seniors have completed while in the Interior Design Program over the last four years. It was a great experience for the student designers to see the amount of growth that has taken place throughout their time in the program here at Western Michigan University.

Western Michigan University's international honors society, Kappa Delta Pi, Beta Iota chapter, was recently featured on the national Kappa Delta Pi website in the "Chapters out Front" section. This section of the site showcases the exceptional activities and accomplishments of a chapter and its members. Kappa Delta Pi at WMU hosts numerous events throughout the year and are dedicated to giving back to the community. For more information, visit <http://www.kdp.org/recognition/>.

Marjorie Stone was named a Presidential Scholar in Teaching, Learning and Educational Studies. She knows a lot about children because



Marjorie Stone

Continued on next page

she has three of her own. She received a bachelor's degree in Biology from Aquinas College in 1985. She worked in research and development for 19 years for The Upjohn Company/Pfizer but when her department was eliminated, she decided to pursue a second career in teaching. Margie has been very successful in her studies at WMU with a 3.95 GPA. She hopes to secure a job teaching science at the middle or high school level in the Kalamazoo/Portage area while pursuing a master's degree. Margie enjoys volunteering at her children's school and hopes to be involved in the Girls on the Run/Girls on Track programs in Kalamazoo.

The members of Phi Epsilon Kappa Epsilon, Alpha Chapter held their spring initiation on Sunday, February 13th in the Student Recreation Center. Phi Epsilon Kappa Fraternity (PEK) is a national honorary fraternity that was founded on April 12, 1913 at the Normal College of the American Gymnastic Union in Indianapolis, Indiana. The local chapter at Western Michigan University initiated its first pledge class to the Epsilon Alpha Chapter on January 11, 1998.



Pictured is Dr. Debra S. Berkey, Health, Physical Education and Recreation professor and Midwest District Representative with PEK with members and initiates.



Tiffany K. Lee

Counselor Education doctoral student **Tiffany K. Lee** has been named one of the two recipients of a 2011 International Association of Addictions and Offender Counselors (IAAOC) Graduate Student Scholarship, which will be presented at the annual IAAOC Breakfast at the American Counseling Association Convention in New Orleans on March 26, 2011.

Assessment of Student Learning

June Gothberg, a doctoral student in Evaluation, Measurement, & Research has prepared two publications and made two professional presentations in the last few months:

Publications:

National Secondary Technical Assistance Center (2011). Transition Leaders Sustainability Toolkit. Western Michigan University, Gothberg, J.E., **Coyle, J.L.**, & **Kohler, P.D.** (U.S. Department of Education, Office of Special Education Programs)

National Secondary Technical Assistance Center (2010). Facilitator Preparation Manual. Western Michigan University, **Bowerman, R.L.**, Kohler, P.D., Coyle, J.L., Gothberg, J.E., & **Shadrick, I.D.**

Presentations:

Gothberg, J.E. & **Wirth, M.** (2011, February). Building a culture of sustainability through program evaluation and improvement.

Keynote presented at Colorado Cadres, Centennial & Thornton, CO Gothberg, J.E. & Coyle, J.L. (2010, November 30). Evaluating the impact of your efforts to improve secondary transition education and services. Webinar presented for the National Secondary Transition Technical Assistance Center. Gothberg has also been appointed to the Family Hope Foundation Board of Directors and re-approved as the Co-Chair for the Disabilities and Other Vulnerable Populations TIG at the American Evaluation Association.

Extended University Programs

Upcoming Events

Join the WMU Lifelong Learning Academy on a bus trip to the Grand Rapids Public Museum to tour the "Bodies Revealed" Exhibit on Friday, April 15. The bus will depart at 9:45 a.m. from the former K-Mart parking lot (Stadium Dr at Drake Rd) and return at approximately 4 p.m. The cost is \$50 per person, which includes the bus transportation and exhibit admission. The trip will be facilitated by Peggy Strong,

lecturer in art, and discussion will be lead by William Venema, M.D., a retired pediatrician. From the museum website: This will be a phenomenal exhibit tour about the amazing and complex machine we call the human body. More than a dozen full human body specimens and hundreds of organs are respectfully displayed to tell the story of the miraculous systems at work within each of us. With a reverent, academic approach, this display allows people of all ages to more closely observe the skeletal, muscular, nervous, digestive, respiratory, reproductive and circulatory systems, and to absorb information normally reserved only for medical professionals. For more information about the exhibit, visit the museum website at www.grmuseum.org/node/3726. Download the registration form at www.wmich.edu/offcampus/lifelong/.

Lee Honors College

Items of Academic Interest

The Lee Honors College has successfully initiated a new invitation process for current WMU students. At the end of each semester, any student who qualifies, and will be attending WMU for at least three more semesters, will receive an e-mail message from our academic advisors inviting them to join the honors college. Following the fall 2010 semester, 227 students accepted our invitation. This new process is also helping us reach the goals set forth in our diversity plan - of the students who recently joined, 5 percent are African American, 5 percent are international students, and 10 percent are Hispanic.

Our Lyceum Lecture Series continues this semester in the Lee Honors College lounge each Wednesday from noon to 1 p.m. We are pleased to announce the following speakers during April: **Dr. Jim Butterfield**, Political Science: "Russia and Non-Russians at Home and the 'Near Abroad'" (April 6); **Dr. Kenneth Steuer**, History: "The Relevance of the League of Nations in the 21st Century" (April 13); **Dr. Mary Lagerwey**, WMU Bronson School of Nursing: "Demystifying the HSIRB" (April 20). Previous speakers this semester have included **Dr. Thomas Kostrzewa**, Haenicke Institute: "Thorn in the Dragon's Claw: The Nobel Prize and China's Angry Reaction"; **Scott Friesner**, Lee Honors College: "Living with Music: Jazz and Blues as a Philosophy of Life"; **Dr. Michael Famiano**, Physics: "String Theory with Ants and Paper"; **Bob Wood**: "The Death of Jimmie Lee Jackson and the Selma March of 1965"; **Nichole Perk**, CEAS: "Having Sense Today: Friendly Reminders for Personal Success"; **Paul Sizer**, Gwen Frostic School of Art: "Comics: Words + Pictures = Everything"; **Drs. Sharon Carlson and Susan Steuer**, University Libraries: "Monks, Murder and Lacy Underthings: Treasures from the WMU Libraries"; and **Dr. Lofty Durham**, Theatre: "Fake Centaurs, Flying Angels, Explosive Effects, and other Commonplaces of the Medieval Theatre." We invite you to join us for the remaining sessions. Lunch is available for purchase (\$3), or you may brown bag your own.



The choreographer Larry Keigwin rehearsing with Ashley Brown and Matt Baker (BFA, 2008).

Steve Zegree, respectively, jazz students performed before audiences, receiving standing ovations in the famed Allen Hall.

Julie Sanford (BA, 1998) won the grand prize in a national juried art competition sponsored by Lark Books and Rio Grande Jewelry Supply. Jewelers and crafters were challenged to create an original piece of jewelry using the same nine basic materials, plus one wild card option. Sanford won for her piece called "Fireflies and Moon Shadows." She utilized all nine parts of the kit and added two Lite-Brite pegs from what she calls "a favorite childhood toy." Sanford said the nostalgic necklace features a multi-layered moonlit landscape beyond a copper-framed screen. The pendant is suspended by stick-like tube links, fireflies and framed screen links, with an integrated leather cord.

Dance alumnus **Matt Baker** (BFA, 2008) is working with choreographer Larry Keigwin who was featured in the New York Times. While at Western Michigan University, he was cast in numerous "Great Works" dances such as Dark Elegies by Antony Tudor and Strict Love by Doug Varone. Matt was awarded the Dalton Exceptional Dance Major Scholarship and the Wendy L. Cornish Endowed Scholarship for excellence in dance performance, choreography and overall leadership.

Upcoming Events

The Academically Talented Youth Program at WMU's Lee Honors College is happy to announce that it will again offer summer programs. Designed for students in the middle grades, we are pleased to offer the following options again this year: Web Page Design, Graphic Novels, Pinhole Photography, and a Poetry Workshop. New this year is Ceramic Face Jugs, where students will study, design, and create their own jugs while exploring different clay hand building techniques. Also new is our chess camp. ATYP Summer programs are half-day classes which run for one week and cost \$100 per week. Space is limited, so students are encouraged to enroll early. For more detailed information on the summer programs, instructors, schedule, and a downloadable registration form, please visit www.wmich.edu/honors/atyp and click on the Register Now link under Summer Programs. You can also e-mail the ATYP office at atyp-info@wmich.edu or call (269) 387-3230.

College of Fine Arts

Student and Alumni Accolades

The WMU Jazz Orchestra and The Gold Company were the featured ensembles at the New York City Jazz at Lincoln Center on Sunday, March 6. Under the direction of **Scott Cowan** and

Ryan Crawley (BFA, 2010) has been selected to exhibit his art work at the Lansing Art Gallery's "City Streets Exhibition." The exhibition Kick-off and Community Celebration will be May 19.

Upcoming Events

The annual Frostic School of Art Student Exhibition will run from April 7 through April 21 in the Monroe-Brown Gallery in the Richmond Center for Visual Arts. An exhibition featuring the work of retiring faculty member **Richard Keaveny** will run from April 28 through June 24 in the Monroe-Brown Gallery.

The School of Music presents:

April 16

- Event: Choral Showcase featuring the University Chorale, Cantus Femina, and Collegiate Singers
- Location: First United Methodist Church, Kalamazoo
- Time: 4 p.m.

April 17

- Event: 52nd Annual Concerto Concert, featuring the University Symphony Orchestra and Concerto Competition winners **Pieter Crathorne** (piano), **Samantha London** (piano), and **Melissa Taddie** (violin)
- Location: Miller Auditorium
- Time: 3 p.m.

Continued on next page

April 18

- Event: 32nd Annual Music Therapy Clinic Concert
- Location: Dalton Center Recital Hall
- Time: 7 p.m.

Enjoy two shows for the price of one at the University Theatre! Double bills of sidesplitting one-acts share the stage and multiply the laughs. The Real Inspector Hound playfully skewers Agatha Christie mysteries and theatre critics, while Black Comedy gleefully exposes characters fumbling in the dark in this slapstick farce. April 14 - 23, Williams Theatre (for ticket information and show times visit www.wmich.edu/theatre).

College of Arts and Sciences

Items of Academic Interest

The first Southwest Michigan Brain Bee was held in February at Western Michigan University and hosted by the Department of Biological Sciences. The day's events included lunch with high school students from four area schools, teachers, WMU faculty, and graduate students. Visitors toured the psychology lab, discussed research posters in Haenicke Hall, and took part in an Electroencephalogram (EEG) in two physical states: relaxed with eyes closed, and while on Facebook (active brain). They also worked on dissecting a brain. The winner was Hanna Larcinese (Paw Paw High School) and our runner-up was Madeline Price (Portage Northern High School). The winner receives a \$500 travel award from the Michigan Chapter of the Society for Neuroscience, to travel to the National Brain Bee in Baltimore, Maryland.

Fort St. Joseph Archaeological Project won the first ever Archaeological Institute of America (AIA) Excavation Outreach Contest, which had participants from six archaeological excavation programs across the country. The winner was determined by votes cast online at the AIA website. The Fort St. Joseph project received 3,456 votes over the course of the week-long voting period, ahead of entries from Belize, Italy, Spain, Florida and South Carolina. The Fort St. Joseph dig is located at a former mission, garrison and trading post complex occupied from 1691 to 1781 by the French and British. The project has focused on community outreach since excavation began in 2002. About 10,000 people have visited the archaeological field school since 2006. The annual open house this summer drew more than 1,500 visitors. For more information about the project, visit www.wmich.edu/fortstjoseph or www.supportthefort.net.



FSJ Field School

Dr. Steve Lipkin, School of Communication, has published a new book, "Docudrama Performs the Past: Arenas of Argument in Films Based on True Stories." Newcastle upon Tyne: Cambridge Scholars Publishing, 2011.

Faculty and Staff Accolades

Nancy Eimers, Department of English, fourth poetry collection *Oz* has been published by Carnegie-Mellon University Press (Jan. 2011).

Richard Katrovas, Department of English, essays have appeared recently in *Ekleksographia*, *Connotations*, and *Mid-American Review*. His *Scorpio Rising: Selected Poems* will appear in Carnegie Mellon University Press in February. He will give readings from this book in February at Stetson University, University of California-Riverside, San Diego State University, University of Southern California, and Loyola-Marymount University.

An award-winning book by Western Michigan University's **Jaimy Gordon** has just been named a finalist for the 2011 PEN/Faulkner Award for Fiction, the largest peer-juried fiction prize in the nation. "Lord of Misrule," which captured the National Book Award for fiction last fall, is among five finalists for the award. The winner will be announced March 15, and all five finalists will be honored Saturday, May 7, at the Folger Shakespeare Library in Washington, D.C. The winner of the 31st annual PEN/Faulkner Award will receive \$15,000. The other four finalists will each receive \$5,000.

Faculty member **Melinda Koelling**, assistant professor of mathematics, has been awarded a \$5000 grant from the Michigan Space Grant Consortium in support of her project, *Mathematical Models of Several Neurons Near a Microelectrode Array*. Project dates are May, 2010, to April, 2011. The Consortium grants program is administered by NASA. Its grants support research on space-related science and technology.

Student and Alumni Accolades

The WMU chapter of Sigma Tau Delta is once again among the very small number of chapters invited to participate in the Outstanding Chapter Exhibition at the 2011 Sigma Tau Delta International convention. This is the chapter's third such invitation in only five years of



Dr. Steve Lipkin



Nancy Eimers

Continued on next page

existence. According to the invitation letter, "The Alpha Nu Pi Chapter at Western Michigan University has been identified as one of the most active, vital chapters in the country." A contingent of WMU students will head to the convention in Pittsburgh in late March. The spring 2011 English Studies Conference will be held at WMU on Saturday, April 9, from noon to 5 p.m.



Mikala Hansen

A Western Michigan University graduate student has won a coveted award for playwriting from the Kennedy Center and will take part in two intensive, resident playwriting workshops. **Mikala Hansen**, a master's student studying playwriting and a graduate assistant in the Department of English, has won the Kennedy Center: The National Association of Partners of American Theatre Annual Playwriting Excellence Award for her full-length play, "Viking-American." Hansen will

spend a week at the Kennedy Center in Washington, D.C., and a week at the University of Nevada in Las Vegas as part of an intensive program in writing for stage and screen.

French major **Rebecca Frandsen** has won a study abroad scholarship from Pi Delta Phi, the national French Honor Society. The nationally competitive award will cover Frandsen's tuition, homestay, and some transportation costs for a six-week session in Aix-en-Provence, France this summer. Ms. Frandsen, who has a minor in English, is planning to become a French teacher after she graduates next year.

Congratulations to the following Mallinson Institute for Science Education graduate students who recently made presentations at the annual meeting of the Michigan Science Teachers' Association: **Tamara Coleman** and **Cathy Northcutt**, Active Learning of the Nature of Science Benchmarks Using the History of Science; **Janice Fulford**, Rivers on Fire: Icebergs Melting, Teaching the Nature of Science; and **William Mamudi**, Should We Keep Teaching Bohr Model? -The Historical Approach of Teaching Atomic Model. In other Mallinson news: from February 13-18, 2011, the Advancing the Science of Limnology and Oceanography (ASLO) conference was held in San Juan, Puerto Rico. Over 1700 scientists from around the world attended to present research relating to the theme 'Limnology and Oceanography in a Changing World.' The ASLO conference brought together an international group of freshwater and marine scientists to meet the challenge of global change, exploring diversity and connections across the range of aquatic systems impacted by humans. The ASLO Aquatic Sciences Meeting is a widely recognized venue for scientific exchange across all aquatic disciplines; however, the area of aquatic science education research is only beginning to emerge at ASLO.

Kate Rowbotham, graduate student, attended this year's ASLO conference to present a poster titled 'Student Conceptions of Eutrophication and Biogeochemical Cycling in a Field-Based Undergraduate Course' in the 'Student Engagement in Education and Public Outreach' poster session. During her poster presentation, Rowbotham had numerous conversations with attendees from around the world, most of whom were very interested in her research from a practical standpoint and wanted to talk about how to improve their own courses or create new field-based courses in which their students could conduct authentic field research, much like the students in the course Kate examined.

Upcoming Events

April 6

- Event: Economics Lecture
- Title: "China in 2049," presented by **Dr. Zhiwu Chen**
- Location: 2028 Brown Hall
- Time: 3 p.m.

April 7

- Event: The Gwen Frostic Reading Series
- Presented by **Jerome Rothenberg**
- Co-sponsored by Kalamazoo College
- Location: K College Chapel
- Time: 7 p.m.
- Event: Religion and Film Series
- Title: "The Last Train Home," presented by **Guo Jue**, Professor of Comparative Religion
- Location: 2028 Brown Hall
- Time: 7 - 9:30 p.m.

April 14

- Event: English Scholarly Speaker Series
- Title: "Open Secrets: Everyday Magic in Early Modern England," presented by **Stephen Orgel**
- Location: 242 Bernhard Center
- Time: 7 p.m.
- Event: Religion and Film Series
- Title: "Into the Wild," presented by **Sean Butler**, Graduate Student of Comparative Religion
- Location: 2028 Brown Hall
- Time: 7 - 9:30 p.m.

College of Aviation

Items of Academic Interest

Graduates of Western Michigan University's flight science program will enjoy the benefits of having the inside track to jobs with three regional airlines, thanks to a new agreement signed this month by Pinnacle Airlines Corp. and

Continued on next page

WMU's College of Aviation. The college and airline inked an agreement that will launch a Professional Pilot Direct Hire Program that will put WMU grads among the first in line for pilot positions without having to go through the traditional recruiting and interview process. The agreement, effective immediately, will mean that WMU flight alumni, who meet the company requirements, will be placed on a list of approved new hire candidates for first officer positions that open up with Pinnacle, Mesaba Airlines and Colgan Air. **Dean Powell** says the agreement can significantly reduce the number of post-license flying that most commercial pilots have to accrue before they are hired as commercial first officers. "Most significant", he says, "is the fact that WMU students who qualify can be hired without having to go through the recruitment and interview process". Pinnacle's assessment of the quality of WMU's training means students do not have to accrue the additional total and multi-engine flight hours that are typically required before they are eligible for first officer seats. "Pinnacle is telling us they consider our grads among the best pilot prospects in the industry," Powell says. "Being a successful WMU flight alum is the quality indicator they are looking for as they build their future work force." Colgan is a regional airline also headquartered in Memphis. Colgan Air operates as Continental Connection, United Express and US Airways Express. Launched in 1991, Colgan offers more than 350 daily flights to 53 cities in 15 states and Canada.



Going through the pre-flight checklist



Mary Ann Eiff (left) and Gail Rouscher (right)

As the College of Aviation continues to lead the world of collegiate aviation and career demand continues to expand, students within the program were treated to an "I Love WMU Aviation" week February 14 - 19. The campaign involved a variety of events designed to demonstrate pride in the University and its highly ranked College of Aviation. Students, faculty and staff were sent daily points of pride celebrating aviation and the many benefits of studying at WMU. Because a happy Bronco is a full Bronco, the week began with a cookout. The smell of hamburgers wafted throughout the campus, bringing in hordes of hungry students. Following the cookout, students were treated to heart shaped cookies the following two days. For those students who showed their Bronco pride and wore WMU and/or CoA apparel, "I Love WMU Aviation" buttons were handed out. The culmination of the week centered around two events: an alumni speaker and a Bronco basketball game. On Friday, distinguished alumni **Sean Eggesfield** returned to campus and presented to over 40 current students. Eggesfield, a 2000 graduate of the WMU College of Aviation and former Bronco football player, currently works as a pilot for Southwest Airlines. Sharing his story with current students, he detailed his journey upon

graduating from WMU to Southwest. Outlining the benefits of training at WMU, he explained in detail how the program helped him achieve his goals. Finally, the college demonstrated its support of all things Brown and Gold by visiting University Arena to watch the Broncos defeat the Illinois State Redbirds. **Mitchell Wert** excelled at the Meijer challenge while **William Doe** showed everyone how it is done during the Coke shootout. Not to be outdone, **David Kinney** won tickets from DirectAir: an

aviation student winning airline tickets? It was just meant to be!

Faculty and Staff Accolades

At the 22nd Annual Women in Aviation International Convention, **Gail Rouscher**, faculty member in the College of Aviation, was awarded the **Mary Ann Eiff** Teacher of the Year Award through the Association for Women in Aviation Maintenance. Named after first-year recipient Mary Ann Eiff, the goal of this award is to honor the aircraft maintenance teacher who has inspired others. This individual can be a woman or a man. It is someone who supports and respects women students and their potential role in the future of aviation technology.

Office of Institutional Effectiveness

Items of Academic Interest

According to the 2010 NSSE survey, what percent of seniors typically come to class without completing readings or assignments? The answer is located at the end of this article. The Higher Learning Commission has begun the process of revising its criteria. For more information, visit ncahl.org. **Brynne Belinger** and **Sharon Carlson** will present a session titled "Curating Self-Study Evidence and Increasing Access: Leveraging the Library" at the 2011 HLC Annual Meeting in Chicago, April 8-12, 2011. The presentation describes how WMU's electronic resource room for the comprehensive accreditation visit was developed, constructed, maintained, and used. Major topics include WMU's decision to use CONTENTdm as the resource room platform, workflow leading up to the visit, and the team's use of the tool. WMU's electronic resource room was a keyword-searchable database containing

Continued on next page

1,499 individual, electronically submitted files categorized according to HLC's criteria and core components. CONTENTdm provided secure remote access to the review team for viewing documents before and after the visit; allowed resource room administrators to track use; and reduced monetary and environmental cost without sacrificing the integrity and robustness of WMU's data collection. Since University Libraries already licensed CONTENTdm, no new products were purchased, and collaboration among University units increased. **Eileen Evans** delivered the keynote address at the East Central Writing Centers Association (ECWCA) 2011 Conference on March 3, 2011. The conference, "Centering Assessment: Roles, Relationships, Respect, Resistance," was organized by **Kim Ballard**, director of the Writing Center, also served as a regional conference for the International Writing Centers Association Conference. Evans' address, "Lessons Learned: Reflections on the Future," set the stage for the first assessment-focused writing center conference. Answer to NSSE 2010 question 1g: 26% of seniors often or very often came to class without completing readings or assignments. Additional items of interest may be found at http://www.wmich.edu/poapa/assessment/inst_assess.html.

University Libraries

Items of Academic Interest

In these times of dwindling budgets and limited new acquisitions to library collections, state public universities have been meeting to devise plans for sharing of resources in a cost-effective manner. In these early discussions Library Associate Deans **Barbara Cockrell** & **Scott Garrison**



Dr. Barbara Cockrell consults spirit of Mark Twain on number of copies of his classics needed to satisfy users in State Academic Libraries.

participated in a February 24 meeting between representatives from selected Michigan academic libraries, the Midwest Collaborative for Library Services (MCLS) consortium and Sustainable Collection Services (SCS) consultants to discuss possibilities for a state-wide, shared approach to retention of print monographs. It is hoped that this will lead to better informed, collaborative

efforts to responsibly manage and downsize existing print collections so that library space may be freed up for other uses while preserving long-term state-wide access to existing titles and identifying rare and unique materials for special preservation considerations.

In the February issue of "PRISM," Professor **Brad Dennis** was featured as an embedded librarian in a graduate course of **Dr. Kelaher-Young**, Department of Education and Human Development. Dennis has also served as an embedded



Knightly largesse underscores Sir Brad's campus personae.

librarian and co-instructor for **Dr. Yuanlong Liu's** online HPER 6900 Research Methods course in the summer of 2010. Through this partnership and Online Education Office (formerly ATIS) they were able to video tape a library research lecture. Dennis then created a rubric and evaluated student literature reviews. The literature reviews became part of the students' final research proposals. The librarian participated in the class discussion online and answered students' questions. "It was very exciting because I could visually track whether students were learning how to retrieve, evaluate, and integrate relevant journal articles into their literature review. These are critical steps in the information literacy process and I could see the impact of my instruction in the learning process." The class was available through the e-learning system and both plan to duplicate this collaborative partnership again in summer I of 2011. Yet, another collaborative partnership yielded

impressive results. Because of inclement weather, a planned library research class was cancelled for **Dr. Luchara Wallace's** SPED 4800 class. Wallace asked that "the class" be recorded so she could make it available to her class through her iTunesU site. Media Technology Specialist **John Mackenzie** was able to oblige the team, and he recorded a library research session using Mediasite technology. He provided a link from Dennis' recorded session to Wallace's class site. Innovative and collaborative efforts in mastery of course content and technology benefit our students. For consulting with Dennis, please contact: brad.dennis@wmich.edu or drop by the Education Library in the lower level of "Old Sangren."

The WMU Legacy Collections Facility Team held a Townhall Meeting March 8 in the Fetzer Center. University Libraries, Facilities Management, and the architectural firm SHW Group conducted the 2-hour gathering attended by 90 members of the campus and Kalamazoo communities. At issue was a new building to meet urgent space needs of University Libraries: WMU University Archives, Regional History Collections, and the main and branch libraries. **Dean Reish** indicated, "The new structure will bring together archival materials that are housed in three different university

Continued on next page



WMU Legacy Collections Facility: Entrance/Lobby View Exterior

locations. A reading room with popular reference resources, a multi-form class space, staff offices, and exhibit space will afford sorely needed space for our teaching, research archives. A part of the facility will consist of high bay, high density, mobile storage where materials from Waldo Library and the branch units will be readily available through advanced retrieval means." The Archives and Regional History Collections provide primary resources for a large variety of disciplines. These collections serve high-school students in Michigan History courses; undergraduates in the Public History Program; graduate students seeking original materials for theses and dissertations; faculty exploring written and visual artifacts unique to southwest Michigan; and the general public tracing their genealogies. Noting the symbiotic nature of such a new facility, Reish said, "We are planning a community center where researchers from the campus and Kalamazoo will meet and generate new knowledge through the discovery of connections to the past. This will be a vital portal linking the University and its resources to the world beyond." The 32,000-square-foot facility will be located on the Oakland Campus or in the vicinity of Schneider Hall. Grants funds, foundation support, and individual private donors will be sought as possible investors in this learning enterprise that will advance WMU academically through continued use of its legacy collections.

Faculty and Staff Accolades



Dr. Susan Steuer and Grad Student Ben Wright check out a textual reference.

Dr. Susan Steuer, Head of Special Collections and collection liaison for medieval studies, was an invited speaker at a recent Center for Research Libraries webinar entitled "Medieval Resources at CLR." Other panelists included Paul Saenger (George A. Poole III Curator of Rare Books and Collection Development Librarian

at the Newberry Library), Mary Wilkes (Member Liaison and Outreach Services Director at CRL), Jane Marie Pinzino (Humanities Research Librarian at Florida State University) and Danielle Forster (Special Collections and Humanities Liaison at the University of Victoria Libraries). The panel was designed to encourage collaborative collecting among member libraries in the field of Medieval Studies and elicit discussion about the best ways to serve members in this field. The Center for Research Libraries (CRL) is an international consortium of over 250 university, college, and independent research libraries. CLR collections provide students, faculty, and other researchers liberal access to these rich source materials to support major research projects, the production of scholarly monographs and studies, dissertations, and graduate and advanced undergraduate seminars.

Dean Reish was named an Extraordinary Leader for his work as campus chair of the WMU United Way Campaign. WMU exceeded its campaign goal of \$275,000 by 5% and moved up in total dollar amount from 6th to 5th place in



Reish as Biker for United Way with Rinker as Leader of the WMU Harley Pack

Kalamazoo County, just behind Borgess Health, and passing in front of PNC. WMU also figured in the "Top 10 Number of Leadership Givers" in Greater Kalamazoo; that is, the total number of employees contributing \$1000 or more to the campaign. Finally, WMU exceeded its contributions to United Way in 2009 by more than \$21,000. Thus, the University was among the "Top 10 Total Contribution Increase Over 2009," finding itself in 3rd position behind the Bronson Healthcare Group by less than \$900 and ahead of the Eaton Corporation. Reish thanked the entire WMU community for its "care

power" at the March Faculty Senate Meeting. "In these tough economic times," he remarked, "it is a fabulous sign of the generosity of University employees who care so much for the less fortunate in Kalamazoo County."

Student and Alumni Accolades

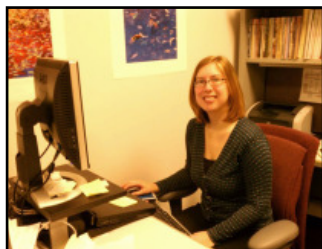
University Libraries is proud that four of its student employees have been invited to join the WMU Chapter of Phi Beta Kappa. They are: **Natasha Allen** (Systems); **Tara Bell** (Operational Services); **Adrienne Neubert** (Archives); and **Caitlin Rozich** (Cataloging). Hats off to these fine students!

They not only succeed academically, but also contribute great service through their work ethic to University Libraries and WMU library users.



Floor Plan: WMU Legacy Collections Facility

In keeping with the 2010 Academic affairs Strategic Plan and the implementation of an assessment tool for "Information Literacy," University Libraries is in the process of administering Project SAILS (Standardized Assessment of Information Literacy Skills) to test to up to 300 total WMU freshmen and seniors. This proctored assessment is being used to measure students' skills in the following skills areas: developing a research strategy, selecting finding tools, searching using finding tool features, retrieving sources, evaluating sources, documenting sources, and understanding economic, legal, and social Issues. The libraries will use the results of the assessment to develop targeted information literacy curricula for students across the disciplines. Faculties are encouraged to ask their freshmen and senior students to participate in the assessment. Students who complete the test will be entered into a drawing to win prizes, including an iPad, an iPod Touch, or a gift card to the University Bookstore. Interested faculty and students should contact Professor **Dianna Sachs**, Instructional Services Librarian, to schedule a time to take the test. Email: dianna.sachs@wmich.edu or Call: (269) 387-5182.



Prof. Dianna Sachs peruses Information Literacy assessment instrument.

Haworth College of Business

Items of Academic Interest

As part of the 20th anniversary of the dedication of Schneider Hall and the naming of the Haworth College of Business, the College unveiled a glass photograph in memory of G. W. Haworth, founder, Haworth Inc. The College is named after the Haworth family and Haworth Inc., a global leader in the design and manufacture of office furniture and organic workspaces. Together, the family and company contributed \$5 million to WMU in 1989.

Faculty and Staff Accolades

Presentations:

Curkovic, S. (March, 2011). The New Economy and Supply Chain Management, 8th Annual Midwest Supply Chain



Dr. Sime Curkovic

Management Conference on "The New Economy and Supply Chain Management," in March.

Dr. Christina Stamper, professor of management, has been unanimously approved for appointment to the Diversity and Inclusion Theme Committee of the Academy of Management. The Diversity and Inclusion Theme Committee is charged with helping to ensure that the academy fully supports and leverages the scholarly contributions of its diverse members and contributes to their professional development.

Publications:

Hawker, N. (2011). "Automotive Aftermarkets: A Case Study in Systems Competition." (Accepted for publication in the spring 2011 issue of Antitrust Bulletin.)

Rea, A. (2011). Security in Virtual Worlds, 3D Webs, and Immersive Environments: Models for Development, Interaction, and Management. IGI Global Publishers, Hershey, Pennsylvania.



Dr. Christina Stamper



Dr. Norman Hawker



Dr. Alan Rea

Student and Alumni Accolades

Congratulations to students **Devon Sanborn, Jason Gaylor** and **Douglas Coffman**, who presented a case study titled "2011 - The Year of Integration/A Social Marketing Solution for Jay's Fresh Markets," at the Annual National Grocers Association Convention in Las Vegas, Nevada. "I want to tell you how proud I am of our school, our professors and most of all our students," says **Marv Imus**, team mentor, WMU alumnus and FMK Industry Advisory Board member. "It was an honor to be involved with the students in the case competition. Their presentation was extremely impressive and I enjoyed their enthusiasm, hard work, and their attitude throughout the time we worked together. They represented WMU with the quality of respect, intelligence and maturity."



Pictured at the unveiling are from left Richard G. Haworth, chairman emeritus, Haworth Inc.; Joseph Blaszczyk, sales and business marketing major; Dr. Kay Palan, dean, Haworth College of Business; Dr. John M. Dunn, WMU president and Janette Gabel-Goes, faculty specialist.

WMU's International Telecommunication Education and Research Association team was selected as one of the four finalists to compete in the ITERA National Case Study Competition during the ITERA Conference on Friday, April 8, 2011. Team members include **George Sesi**, TIM major, **Hugo Martinez Rodriguez**, TIM major, and **Travis Ross**, CIS major. **Dr. Pairin Katerattanakul** is the team's advisor. The finalists are: Ball State University, James Madison University,

Continued on next page

Murray State University and Western Michigan University. In addition, the paper authored by **Tharyn Taylor**, TIM major, was accepted for presentation and entered into the Student Paper Competition.

Over 60 students from William Ward's Internet Marketing and Retail Management classes at the Haworth College of Business partnered with the Michigan State University Alumni Association for a live video streaming and Twitter chat with several digital and social thought leaders attending the South by Southwest (SXSW) conference in mid-March. **John Hill**, director, Alumni Career Services and **Tim Bograkovs**, Alumni team member at Michigan State University, and a team from MSUAA, attended the event. They are bringing the SXSW back to Michigan and reminding the world that Michigan is a place of innovation and energy," says Ward. SXSW is the annual music, film and interactive conference and festival held in Austin, Texas. The event attracts the smartest minds and has become the venue for innovative companies to launch new products and gain early traction and buzz.

Upcoming Events

Friday, June 10 and Saturday, June 11 - Fifth Facing East Facing West conference - a multidisciplinary conference on North America's relations with Asian countries held at the Fetzer Center. For more information visit: www.wmich.edu/business/fefwconference/.

Grand Rapids MBA Alumni and Graduation Celebration Wednesday, April 27 6 - 7:30 p.m. - 2333 Beltline, Grand Rapids Alumni will meet **Dr. Kay Palan**, dean, Haworth College of Business and **Dr. Dawn Gaymer**, associate provost - EUP, and take time to network and plan future Grand Rapids alumni events.

Mark your calendar for the last two speakers in the 2010-2011 Keystone Community Bank Breakfast Series:

- Friday, April 29 - Greg Ayers, Discover Kalamazoo
- Friday, May 27 - Ron Kitchens, Southwest Michigan

First RSVP to **Shawna Cassada** at shawna.cassada@wmich.edu or by calling 269.387.6059.

College of Engineering and Applied Sciences

Items of Academic Interest

The Department of Civil and Construction Engineering (CCE) conducted a two-day national workshop on Finite Element Basics & Refined Bridge Structural Analysis for 10 bridge engineers and consultants at the state and county level. **Dr. Upul Attanayake**, CCE assistant professor, **Dr. Yufeng Hu**, CCE assistant professor, and **Dr. Haluk Aktan**, CCE chair and professor, directed the event held at the Parkview Campus computer center on March 2 and 3. The purpose of the workshop was to train bridge engineers on fundamentals of finite element analysis and provide the opportunity for hands on experience to gain knowledge in analyzing complex bridge structural systems. This is the fifth workshop

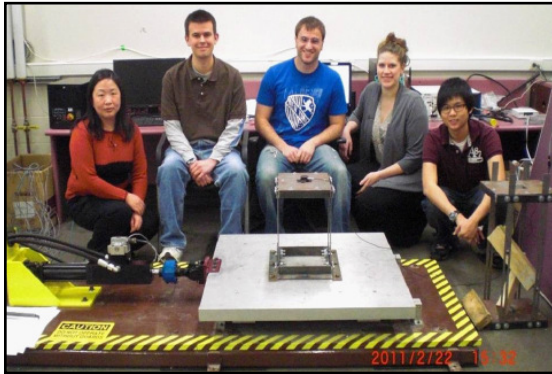


Finite Element Basics & Refined Bridge Structural Analysis Workshop Group

conducted as a joint outreach activity of the department and the Center for Structural Durability to help professional engineers fulfill their continuing education requirements. The workshop was co-sponsored by the Michigan's Local Technical Assistance Program (LTAP), National Association of County Engineers (NACE), American Council of Engineering Companies (ACEC) of Michigan, and Western Michigan University (WMU). Several people assisted in coordinating and organizing the workshop. Tim Colling from Michigan's LTAP was instrumental in the distribution of workshop information throughout the U.S. **Abdul Mohammed**, **Cem Mansiz**, and **Duy Nguyen** WMU graduate students, provided technical support for the workshop participants who needed help with software that was used for bridge modeling and analysis. **Alp Servi**, WMU graduate student, helped with other activities related to the workshop. **Nancy Landsberger**, CCE office coordinator, and **Estella Burdick**, CCE office assistant, contributed to numerous tasks related to the workshop. **Dr. Karlis Kaugars**, Director of I.T. and Facilities was instrumental in managing the computer facilities without any interruption to the activities.

Dr. Xiaoyun Shao is an assistant professor in the Department of Civil and Construction Engineering and the founder of the Laboratory of Earthquake and Structural Simulation at WMU. Dr. Shao, together with John W. van de Lindt (University of Alabama), Mikhail Gershfeld (California State Polytechnic University), Michael Symans (Rensselaer Polytechnic Institute), and Weichiang Pang (Clemson University) performed the work that obtained a \$1,236,000

Continued on next page



Members of Laboratory of Earthquake and Structural Simulation (LESS). From left to right: Dr. Xiaoyun Shao, Griffin Enyart, Kevin Phillips, Chelsea Griffith and Chee Kian Teng

National Science Foundation grant on August 28, 2010. This will fund the Network for Earthquake Engineering Simulation Research (NEESR) project that aims to make wood frame buildings safer from earthquake damage. As early as 1970, the structural engineering and building safety community recognized that a large number of two, three and even some four-story wood frame buildings, designed with the first floor used for parking or commercial space, were built with deficiencies, referred to as a "soft story." Thus, many older multi-story, wood frame buildings (built prior to 1970s) are susceptible to collapse at the first story during earthquakes. Most counties recognize this as a disaster preparedness problem and are actively developing various ordinances and mitigation plans to address this threat. The NEESR project will (1) enable seismic retrofit of soft-story, wood frame buildings based on performance, (2) experimentally validate recently proposed concepts for retrofit of soft-story, wood frame buildings, and (3) provide a fundamental understanding of the way wood frame buildings collapse through a systematic experimental program consisting of three major test types at two NEESR facilities. Upon completion, the project will (1) improve the fundamental understanding of collapse mechanisms in wood frame buildings; (2) improve seismic numerical modeling including collapse modeling of wood frame buildings; (3) provide a performance-based approach and guidelines for retrofit of soft-story, wood frame buildings using seismic protection devices, and (4) enable a more accurate calculation of the margin against collapse for design code development.

Faculty and Staff Accolades

Dr. John Patten was invited to serve as one of the hosts at a Business Review roundtable forum on the "new economy". At the event held here in Kalamazoo, he was asked to offer his definition of the "new economy". His response



Dr. John Patten

was, "Engineering in general -- and manufacturing in particular -- in the New Economy may be summed up simply as doing more with less. Examples include: Higher productivity resulting in more output (product) with fewer workers; multitasking: Employees being assigned multiple job responsibilities (maybe a result of leaning out an enterprise or a reduction in workforce or an expansion in operations); Lean and Green components: In my particular area of interest, green manufacturing, emphasis is placed on getting the same or more output (e.g. product) using less resources, or using the resources more efficiently/effectively -- less material, less energy (gas, electricity, etc.), less water, and with a reduced environmental footprint (i.e. less pollution, less landfill, etc.); education: In WMU's manufacturing engineering program, the new economy includes online (hybrid) web-based courses and hybrid technology (combinations including two way synchronous audio-video for distance education)." Dr. John Patten is the director of the Green Manufacturing Initiative, and director of the Manufacturing Research Center at Western Michigan University.

Student and Alumni Accolades



Left to right: Steven Kumar Srivastava, Sean Derrick, Gov. Rick Snyder, and Gerry Anderson, President and CEO of DTE Energy

Perennial BioEnergy, led by **Steven Kumar Srivastava** and assisted by **Sean Derrick**, College of Engineering and Applied Sciences graduate students, finished fourth and received \$7,000 at the 2011 Clean Energy Prize (CEP) competition on February 18th at the University of Michigan Alumni Center. The CEP, sponsored by DTE Energy and the University of Michigan, is a third-year annual student-based competition designed to engage the next generation of leaders in developing clean energy

solutions. Perennial BioEnergy LLC is creating a pennycress seed grower's cooperative to develop a reliable and affordable bio-oil supply for the biodiesel industry. USDA research has proven pennycress to be a viable non-food winter oilseed, which can be integrated with summer cash crops such as corn and soybeans. Steven and Sean are Masters Students in the Industrial & Manufacturing Engineering department majoring in Manufacturing Engineering. Both students work in the Green Manufacturing Initiative under the direction of **Dr. John Patten** P.E., Chairman of Manufacturing Engineering. Both students completed their undergraduate studies at Western Michigan University. Sean is expected to graduate in August 2011 and Steven in spring 2012.

Seven College of Engineering and Applied Sciences students received scholarship awards during the 2011 Engineers Week Dinner event. Four students received scholarships from the Eaton Corporation: **Mitchell Zajac, Rochelle Gillette, Jacob Hill, and Adeel Khan.** Fariba Nasiri received a scholarship from the, Institute of Electrical and Electronics Engineers, (IEEE) West Michigan section. **Casy Kick** received a scholarship from The Materials Information Society, (ASMI). **Cody Boyne**

received a scholarship from the Society for Plastic Engineers, (SPE). Cody Boyne is an Industrial and Manufacturing Engineering undergraduate student majoring in Engineering Management Technology. Fariba Nasiri is an Electrical and Computer Engineering graduate student majoring in Electrical Engineering. Rochelle Gillette is a Paper and Chemical Engineering undergraduate student majoring in Chemical Engineering, Life Science. Jacob Hill is an Industrial and Manufacturing Engineering undergraduate student majoring in Industrial and Entrepreneurial Engineering. Adeel Khan is an Industrial and Manufacturing Engineering graduate student majoring in Engineering Management. Casy Kick is a Paper, Chemical, and Imaging Engineering undergraduate student majoring in Chemical Engineering and Energy Management. Mitchell Zajac is a Mechanical and Aeronautical Engineering undergraduate student majoring in Mechanical Engineering.



Scholarship Award Recipients. Left to right: Jacob Hill, Cody Boyne, Mitchell Zajac, Adeel Khan, Casy Kick, and Rochelle Gillette (Fariba Nasiri not pictured)

in order to produce a more efficient catalyst than the one used commercially. Part of the research will focus on producing a catalyst with a smaller bandgap that can react more easily with excitation of the visible light and to reduce the reaction time of this catalyst to clean the environment where it acts. Also, this research is looking for the involvement of other students in the engineering field.

Upcoming Events

The forty-eighth Senior Engineering Design Conference is planned for Tuesday, April 19th, 2011 from 8:00am to 4:00pm at the College of Engineering and Applied Sciences on the Parkview Campus of Western

Michigan University (times to be announced later). The College of Engineering and Applied Sciences sponsors the conference to showcase the work of its graduating seniors, who are required to complete a capstone project that puts into practice what they have learned. Many of the projects are sponsored by business and industry. The conference is free and open to the public. You are welcome to attend all or part of the day's events. Reservations are not necessary. The College of Engineering and Applied Sciences sponsors the conference to showcase the work of its graduating seniors, who are required to complete a capstone project that puts into practice what they have learned. For Additional Information please visit: <http://www.wmich.edu/engineer/pdf/SEDP%2048%20%20Spring%202011.pdf>

The Evaluation Center

Faculty and Staff Accolades

The Evaluation Center's Assistant Director, **Dr. Lori Wingate**, recently took on the principal investigator role for EvaluATE, the National Science Foundation-funded evaluation resource center for its Advanced Technological Education Program. After leading the center for two and a half years, **Dr. Arlen Gullickson** is now co-PI for the two million dollar NSF grant. EvaluATE's mission is to strengthen the ATE program's evaluation knowledge base and expand the use of exemplary evaluation practices. Its main services/activities include bimonthly webinars, a quarterly newsletter, Listserv, community of practice, annual survey of ATE grantees, occasional workshops, and website featuring a digital resource library. EvaluATE's webinars are free and open to all who are interested in learning more about evaluation in the STEM education context. You can find out more at www.evaluate.org.



Left to Right: Alejandro Carrasco and Francisco Yapor

Alejandro Carrasco and Francisco Yapor were selected as recipients of the Office of the Vice President for Research Undergraduate Research Excellence Award for spring 2011. Alejandro and Francisco

are students from the Dominican Republic who are on a scholarship here at Western Michigan University. Francisco is studying Aeronautical Engineering and Alejandro is studying Mechanical Engineering. They are conducting their research with their mentor **Dr. Pnina Ari-Gur**, on Titania Catalyst. Their project, "Synthesis and Characterization of Photocatalyst for Environmental Clean Up", earned them the award. The project focuses on giving students the opportunity to get involved in the topic of environmental problems. Students will participate actively to find the best ways to optimize the ratio of Anatase and Rutile and also to find the finest particle size and shape

Upcoming Events

The Evaluation Center's April Evaluation Café events will feature current and former interdisciplinary evaluation doctoral students. On April 5, **Drs. Amy Gullickson, Margaret Richardson, and Anne Cullen** will present "If only I'd known: Help in Navigating the Dissertation Process." On April 12, Lee Balcolm will lead a discussion of revisions to the Program Evaluation Standards. **Diane Rogers** and **Mohammed Alyami** will present "Evaluation, Community Collaboration, and Race: Lessons Learned from a Multicultural Project" on April 19, wrapping up the spring 2011 Evaluation Café series. All presentations begin at noon and take place at The Evaluation Center, 4405 Ellsworth Hall. Bring your lunch or enjoy the free pizza. For more information see www.wmich.edu/evalctr/evaluation-cafe.

Prism

Newsletter

Editor-in-Chief:

Dr. Timothy Greene

Editors:

Amy Routhier
Megan Anderson

Production:

Nicole Battista

Accredited by The Higher Learning Commission and a member of the North Central Association.

www.ncahigherlearningcommission.org

1(800) 621-7440