



Western Michigan University
ScholarWorks at WMU

Legacy Scout Tickets from Pure Oil Company

8-20-2021

**MGRRE_PureOilScoutTickets_Fisher, Ernest
C._5_21145001759000**

MGRRE
Western Michigan University

Follow this and additional works at: <https://scholarworks.wmich.edu/pure>



Part of the Geology Commons

WMU ScholarWorks Citation

MGRRE, "MGRRE_PureOilScoutTickets_Fisher, Ernest C._5_21145001759000" (2021). *Legacy Scout Tickets from Pure Oil Company*. 9533.
<https://scholarworks.wmich.edu/pure/9533>

This Document is brought to you for free and open access via ScholarWorks at WMU. It has been accepted for inclusion in Legacy Scout Tickets from Pure Oil Company by an authorized administrator of ScholarWorks at WMU. See the National Digital Catalogue - Science Base Catalogue for more collections submitted by MGRRE.



MGRRE_PureOilScoutTickets_Fisher, Ernest C._5_21145001759000

API 21145001759000

Permit Number None

Lease Name Fisher, Ernest C.

Well Number 5

County Saginaw

Township 12N

Range 04E

Section 10

2021 DEQ or Pure co_name Ohio Fuel Supply Company

Pure Number N37

Latitude 43.458182

Longitude -83.9854659

THE PURE OIL COMPANY
LOCATION REPORT

FISHER 5
No.

DATE

STATE COUNTY *Sag* DIST. *Sag* TWP. *Sag* SEC. *11 11* TOWN RANGE

WELL No. *5 5* (SERIAL No. *2137 N37*) FARM *E. Fisher* QUADRANGLE *E. Fisher* RANGE *209* ACRES

NAME OF STREAM OR WATERS QUADRANGLE

OPERATOR *Ohio Fuel* MAP

..... Feet from North Line of Farm

200

250 " " East " " "

" " South " " "

" " West " " "

..... Feet from North Line of Section

" " East " " "

" " South " " "

" " West " " "

LEGEND

○ LOCATION

⊙ DRY HOLE

⊕ RIG

⊕ DRY SHOWING OIL

⊕ DRILLING

⊕ DRY SHOWING GAS

⊕ GAS WELL

⊕ ABANDONED LOCATION

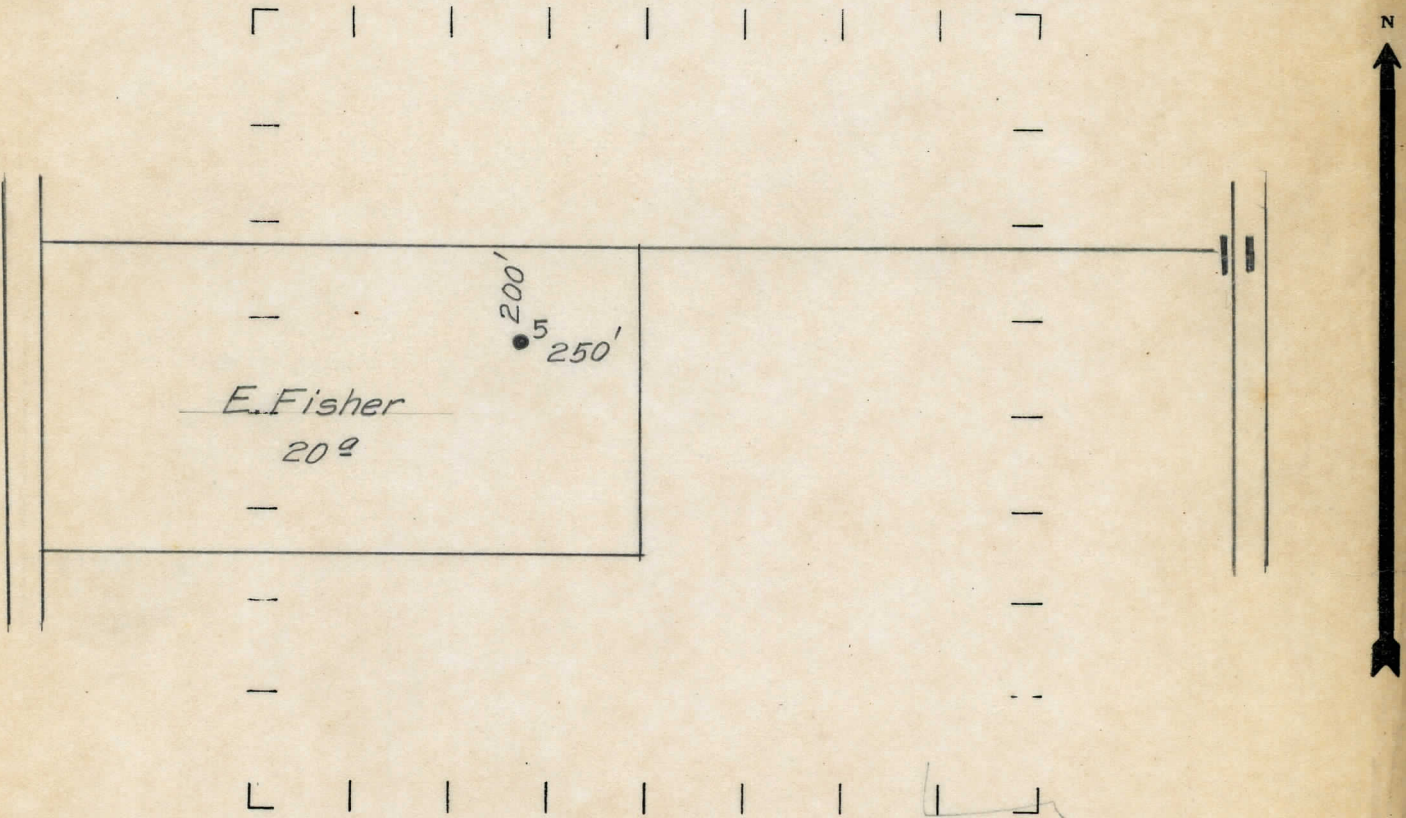
● OIL WELL

⊕ ABANDONED GAS WELL

⊕ SMALL OIL WELL

⊕ ABANDONED OIL WELL

NOTE: Below make tracing from map, (when no map is obtainable make sketch) showing farm, center of section, this location with measurements and also wells, dry holes, or other locations in the vicinity of this location. Make copy to keep for reference and send original to Chicago office.



REMARKS:

.....
.....
.....

T. of B. 1832'

SIGNED

.....
Superintendent or Foreman.