



Western Michigan University
ScholarWorks at WMU

Legacy Scout Tickets from Pure Oil Company

8-20-2021

MGRRE_PureOilScoutTickets_Fisher, Ernest_6_21145001769000

MGRRE

Western Michigan University

Follow this and additional works at: <https://scholarworks.wmich.edu/pure>



Part of the Geology Commons

WMU ScholarWorks Citation

MGRRE, "MGRRE_PureOilScoutTickets_Fisher, Ernest_6_21145001769000" (2021). *Legacy Scout Tickets from Pure Oil Company*. 9534.

<https://scholarworks.wmich.edu/pure/9534>

This Document is brought to you for free and open access via ScholarWorks at WMU. It has been accepted for inclusion in Legacy Scout Tickets from Pure Oil Company by an authorized administrator of ScholarWorks at WMU. See the National Digital Catalogue - Science Base Catalogue for more collections submitted by MGRRE.



MGRRE_PureOilScoutTickets_Fisher, Ernest_6_21145001769000

API 21145001769000

Permit Number None

Lease Name Fisher, Ernest

Well Number 6

County Saginaw

Township 12N

Range 04E

2021 DEQ or Pure co_name Ohio Fuel Supply Company

Pure Number N38

Latitude 43.4368695

Longitude -83.9941229

THE PURE OIL COMPANY
LOCATION REPORT

FISHER 6
No. 20^a

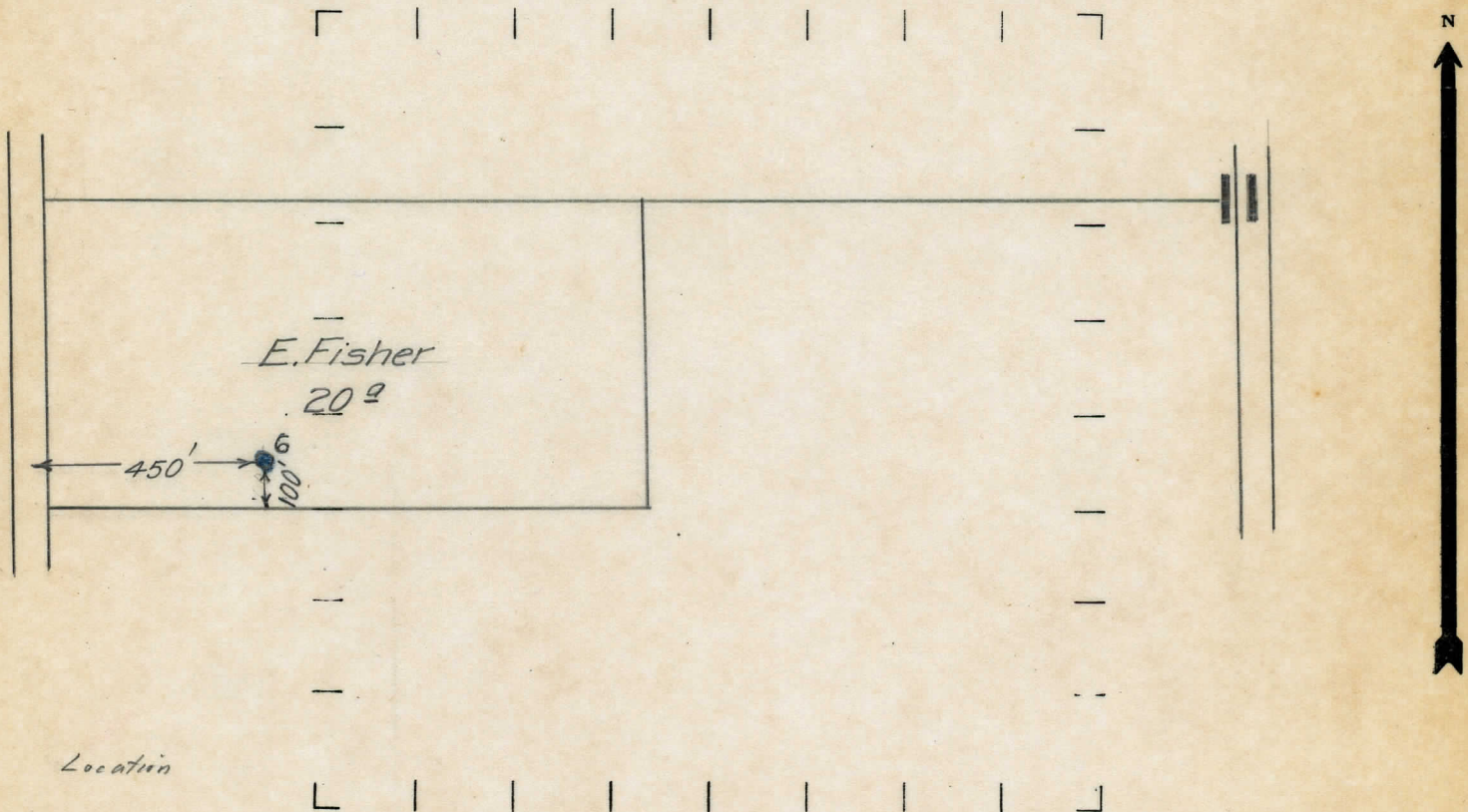
DATE _____
STATE _____ COUNTY *Sag.* DIST. *Sag.* TWP. _____ SEC. _____ TOWN _____ RANGE _____
WELL No. *6* (SERIAL No. *2125*) FARM *N38 E. Fisher* ACRES *20^a*
NAME OF STREAM OR WATERS _____ QUADRANGLE _____
OPERATOR *Ohio Fuel* MAP _____

Feet from North Line of Farm
_____ " " East " " "
100 " " South " " "
450 " " West " " "
Feet from North Line of Section
_____ " " East " " "
_____ " " South " " "
_____ " " West " " "

LEGEND

- LOCATION
- ⊕ RIG
- ⊕ DRILLING
- ☀ GAS WELL
- OIL WELL
- ⊕ SMALL OIL WELL
- ⊕ DRY HOLE
- ⊕ DRY SHOWING OIL
- ☀ DRY SHOWING GAS
- ⊕ ABANDONED LOCATION
- ☀ ABANDONED GAS WELL
- ⊕ ABANDONED OIL WELL

NOTE: Below make tracing from map, (when no map is obtainable make sketch) showing farm, center of section, this location with measurements and also wells, dry holes, or other locations in the vicinity of this location. Make copy to keep for reference and send original to Chicago office.



REMARKS:

SIGNED

Superintendent or Foreman.