



Western Michigan University
ScholarWorks at WMU

Legacy Scout Tickets from Pure Oil Company

8-20-2021

MGRRE_PureOilScoutTickets_Boehner, Martin (Saginaw Prospecting No. 68)_1_21145004729000

MGRRE

Western Michigan University

Follow this and additional works at: <https://scholarworks.wmich.edu/pure>



Part of the Geology Commons

WMU ScholarWorks Citation

MGRRE, "MGRRE_PureOilScoutTickets_Boehner, Martin (Saginaw Prospecting No. 68)_1_21145004729000" (2021). *Legacy Scout Tickets from Pure Oil Company*. 9538. <https://scholarworks.wmich.edu/pure/9538>

This Document is brought to you for free and open access via ScholarWorks at WMU. It has been accepted for inclusion in Legacy Scout Tickets from Pure Oil Company by an authorized administrator of ScholarWorks at WMU. See the National Digital Catalogue - Science Base Catalogue for more collections submitted by MGRRE.



MGRRE_PureOilScoutTickets_Boehner, Martin (Saginaw Prospecting No. 68)_1_21145004729000

API 21145004729000

Permit Number None

Lease Name Boehner, Martin (Saginaw Prospecting No. 68)

Well Number 1

County Saginaw

Township 12N

Range 04E

Section 11

2021 DEQ or Pure co_name Smith and Martin

Pure Number N42

Latitude 43.44848922

Longitude -83.97465356

THE PURE OIL COMPANY
LOCATION REPORT

No.

DATE

STATE S.P. 68 COUNTY Sag DIST. Sag TWP. 14 SEC. _____ TOWN _____ RANGE _____

WELL No. _____ (SERIAL No. N42) FARM _____ ACRES 19

NAME OF STREAM OR WATERS _____ QUADRANGLE _____

OPERATOR Sag Pros. Co. MAP _____

Feet from North Line of Farm

200

" " East " " "

175

" " South " " "

" " West " " "

Feet from North Line of Section

" " East " " "

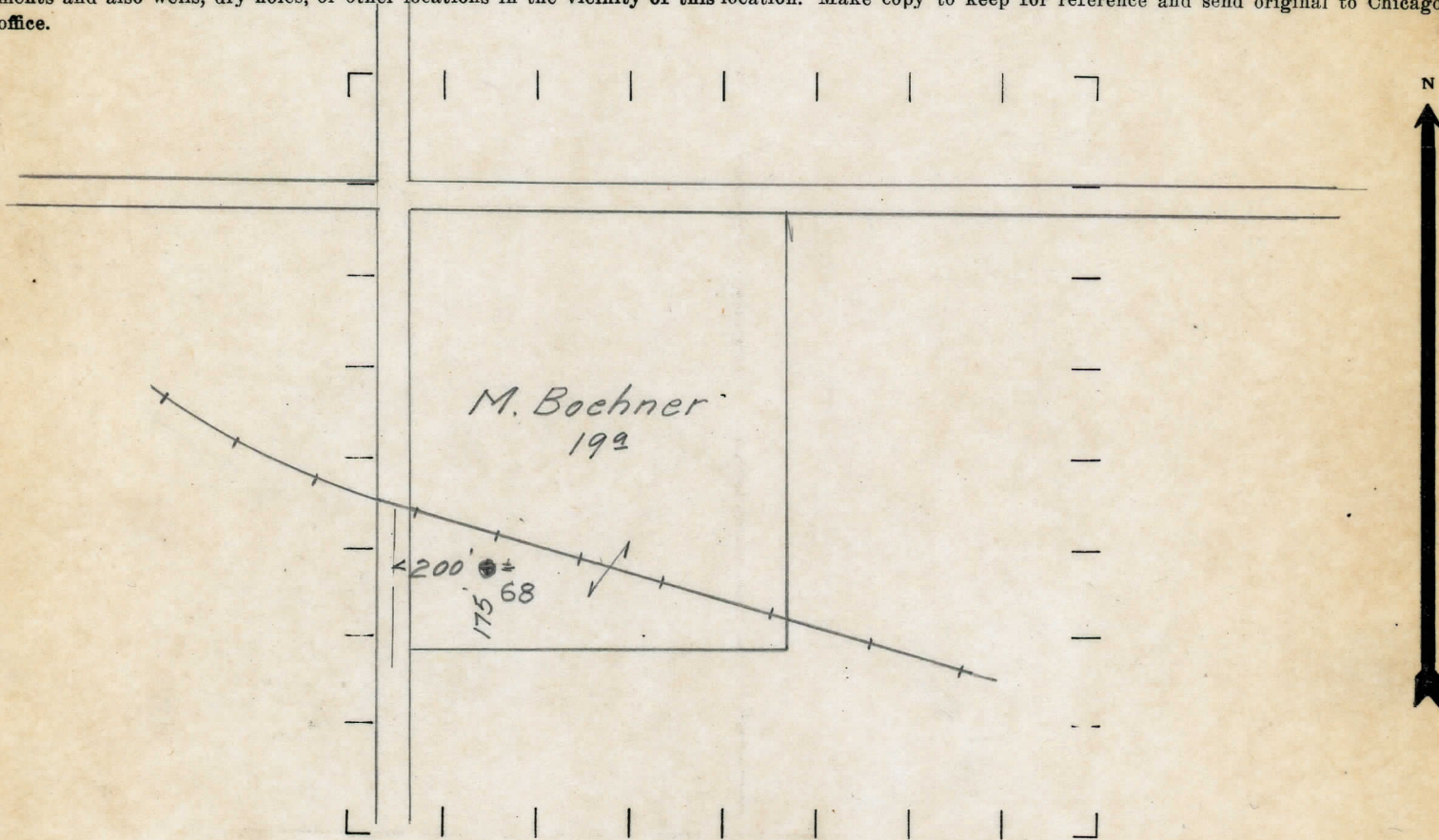
" " South " " "

" " West " " "

LEGEND

- LOCATION
- ⊕ RIG
- ⊕ DRILLING
- ☼ GAS WELL
- OIL WELL
- ⊕ SMALL OIL WELL
- ⊕ DRY HOLE
- ⊕ DRY SHOWING OIL
- ☼ DRY SHOWING GAS
- ⊕ ABANDONED LOCATION
- ☼ ABANDONED GAS WELL
- ⊕ ABANDONED OIL WELL

NOTE: Below make tracing from map, (when no map is obtainable make sketch) showing farm, center of section, this location with measurements and also wells, dry holes, or other locations in the vicinity of this location. Make copy to keep for reference and send original to Chicago office.



REMARKS:

Berea 30 bbls. 1828-1846

SIGNED

Superintendent or Foreman.