



Western Michigan University  
ScholarWorks at WMU

---

Legacy Scout Tickets from Pure Oil Company

---

8-20-2021

## MGRRE\_PureOilScoutTickets\_Boehner, Adam (Saginaw Prospecting No. 65)\_1\_21145002089000

MGRRE

*Western Michigan University*

Follow this and additional works at: <https://scholarworks.wmich.edu/pure>



Part of the Geology Commons

---

### WMU ScholarWorks Citation

MGRRE, "MGRRE\_PureOilScoutTickets\_Boehner, Adam (Saginaw Prospecting No. 65)\_1\_21145002089000" (2021). *Legacy Scout Tickets from Pure Oil Company*. 9548. <https://scholarworks.wmich.edu/pure/9548>

This Document is brought to you for free and open access via ScholarWorks at WMU. It has been accepted for inclusion in Legacy Scout Tickets from Pure Oil Company by an authorized administrator of ScholarWorks at WMU. See the National Digital Catalogue - Science Base Catalogue for more collections submitted by MGRRE.



---

**MGRRE\_PureOilScoutTickets\_Boehner, Adam (Saginaw Prospecting No. 65)\_1\_21145002089000**

API 21145002089000

Permit Number None

Lease Name Boehner, Adam (Saginaw Prospecting No. 65)

Well Number 1

County Saginaw

Township 12N

Range 04E

Section 14

2021 DEQ or Pure co\_name Saginaw Prospecting Company

Pure Number N55

Latitude 43.44378

Longitude -83.97551

THE PURE OIL COMPANY  
LOCATION REPORT

No.

DATE .....

STATE ..... COUNTY *Sag* DIST. *Sag* TWP. *Sag* SEC. ..... TOWN ..... RANGE *30<sup>2</sup>*

WELL No. *SP 65* (SERIAL No. *N55*) FARM *A. Boehmer* ACRES

NAME OF STREAM OR WATERS ..... QUADRANGLE .....

OPERATOR *Sag. Prospecting Co.* MAP .....

..... Feet from North Line of Farm

*200* " " East " " "

" " South " " "

" " West " " "

..... Feet from North Line of Section

" " East " " "

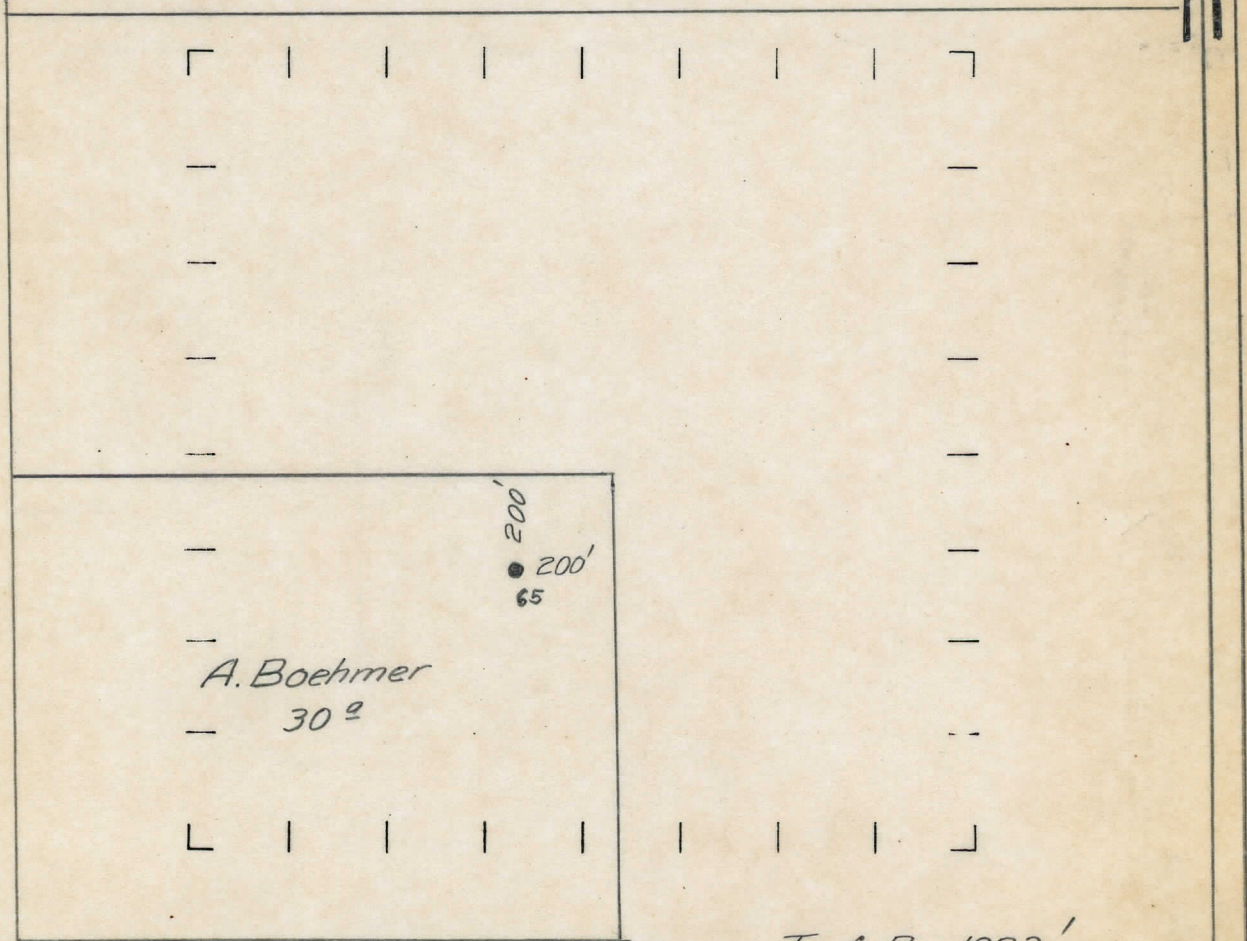
" " South " " "

" " West " " "

**LEGEND**

- LOCATION
- ① RIG
- ⊕ DRILLING
- ☼ GAS WELL
- OIL WELL
- ⦿ SMALL OIL WELL
- ⊖ DRY HOLE
- ◆ DRY SHOWING OIL
- ⊗ DRY SHOWING GAS
- ⊙ ABANDONED LOCATION
- ☼ ABANDONED GAS WELL
- ⦿ ABANDONED OIL WELL

NOTE: Below make tracing from map, (when no map is obtainable make sketch) showing farm, center of section, this location with measurements and also wells, dry holes, or other locations in the vicinity of this location. Make copy to keep for reference and send original to Chicago office.



REMARKS:

*Berea 1823-1841 15 bbls.*

*T. of B. 1823'*

SIGNED

Superintendent or Foreman.