



Western Michigan University  
ScholarWorks at WMU

---

Legacy Scout Tickets from Pure Oil Company

---

8-20-2021

**MGRRE\_PureOilScoutTickets\_Stelzriede,  
John\_3\_21145006449000**

MGRRE

*Western Michigan University*

Follow this and additional works at: <https://scholarworks.wmich.edu/pure>



Part of the Geology Commons

---

#### **WMU ScholarWorks Citation**

MGRRE, "MGRRE\_PureOilScoutTickets\_Stelzriede, John\_3\_21145006449000" (2021). *Legacy Scout Tickets from Pure Oil Company*. 9550.

<https://scholarworks.wmich.edu/pure/9550>

This Document is brought to you for free and open access via ScholarWorks at WMU. It has been accepted for inclusion in Legacy Scout Tickets from Pure Oil Company by an authorized administrator of ScholarWorks at WMU. See the National Digital Catalogue - Science Base Catalogue for more collections submitted by MGRRE.



---

**MGRRE\_PureOilScoutTickets\_Stelzriede, John\_3\_21145006449000**

API 21145006449000

Permit Number None

Lease Name Stelzriede, John

Well Number 3

County Saginaw

Township 12N

Range 04E

Section 11

2021 DEQ or Pure co\_name Sun Oil Company

Pure Number N57

Latitude 43.4581312

Longitude -83.9657404

THE PURE OIL COMPANY  
LOCATION REPORT

No.

DATE .....

STATE 3 COUNTY Sag DIST. Sag TWP. 11 SEC. 11 TOWN 11 RANGE 11  
WELL No. 3 (SERIAL No. N57) FARM J. Steltzriede ACRES 90

NAME OF STREAM OR WATERS Sun Oil Co. QUADRANGLE .....

OPERATOR Sun Oil Co. MAP .....

..... Feet from North Line of Farm

..... " " East " " "

200

..... " " South " " "

750

..... " " West " " "

..... Feet from North Line of Section

..... " " East " " "

..... " " South " " "

..... " " West " " "

**LEGEND**

○ LOCATION

⊗ DRY HOLE

① RIG

⊕ DRY SHOWING OIL

⊕ DRILLING

⊗ DRY SHOWING GAS

⊗ GAS WELL

⊗ ABANDONED LOCATION

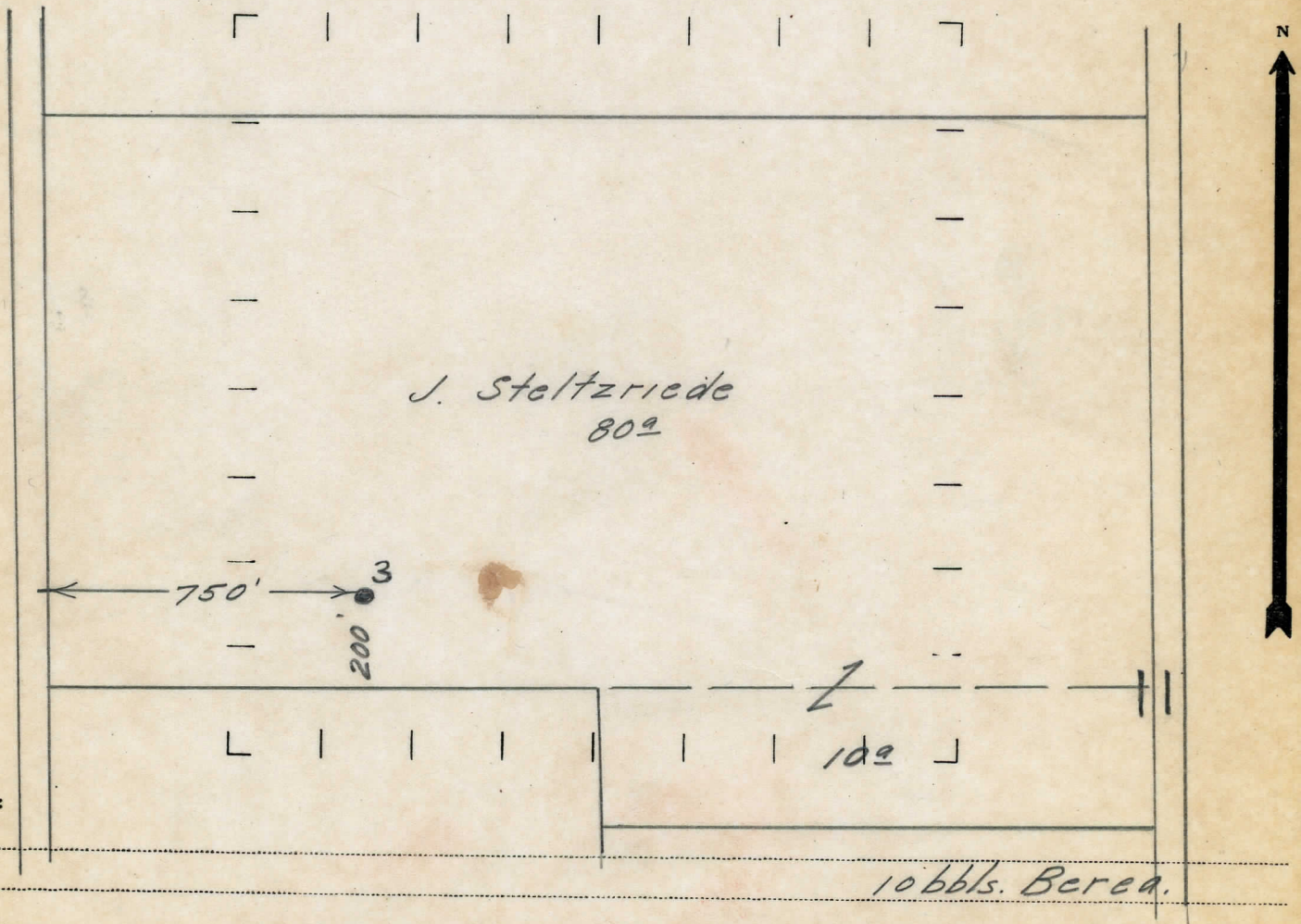
● OIL WELL

⊗ ABANDONED GAS WELL

⊕ SMALL OIL WELL

⊗ ABANDONED OIL WELL

NOTE: Below make tracing from map, (when no map is obtainable make sketch) showing farm, center of section, this location with measurements and also wells, dry holes, or other locations in the vicinity of this location. Make copy to keep for reference and send original to Chicago office.



REMARKS:

SIGNED

Superintendent or Foreman.