



Office of Faculty Development Extended University Programs Office of Information Technology

"Potentially transformative," is the way Dr. James Gilchrist, chief information officer, describes the University's transition to a new software program for online instruction and web support of courses, with greatly expanded capabilities for both instructors and students. The new system continues under the name Elearning and offers a variety of improved features in an intuitive, customizable interface.

- more sophisticated spreadsheet-style grade book
- subscription services for discussions
- webinar and interactive engagement platform called LiveRoom
- better integration of third-party tools.

"Instead of online learning being primarily a matter of how to adapt our teaching to the limitations of the system, the flexibility and capabilities of the new Elearning will allow us to expand and improve our teaching with new modes of interactive learning," says David Loberg Code, professor of music and member of

the selection committee for the new system. The new system will be rolled out in three phases beginning this month and continuing through spring semester 2012. Phase I will roll out fully online courses for summer II session. Phase II will consist of migrating 100 courses and training the faculty who instruct them for fall semester implementation and feedback. Phase III will consist of migrating the remainder of the courses for spring semester implementation. By spring semester, students will be able to access the new Elearning through GOWMU, and the old system will be taken offline. Beginning with spring semester, all instructors will submit their midterm and final grades through Elearning instead of through the current Banner interface. Significant personnel resources are focused on the successful migration of currently used courses, education and support of instructors and ongoing support of instructors and students. Implementation and support of transition is a collaborative effort involving Extended University Programs and the offices of Faculty Development and Information Technology.

Table of Contents

College of Arts and Sciences	20
College of Education and Human Development.	6
College of Engineering and Applied Sciences.	17
College of Health and Human Services.	2
Lee Honors College	14
Graduate College.	9

Evaluation Center.	9
Extended University Programs	2
Haenicke Institute for Global Education	22
Haworth College of Business	11
Office of Institutional Equity	15
University Libraries	16

Extended University Programs

Student and Alumni Accolades

Patti Dillard, a graduate student in the MSW program, has been selected as the 2011 GRAHEN (Grand Rapids Area Higher Education Network) Outstanding Adult Learner from WMU-Grand Rapids. The OAL award is presented students who exemplify the ability to successfully juggle their career, school, family and community responsibilities. She was presented with a cash award and certificate at a reception at GRCC on April 20. Patti was nominated for this honor by **Mary Ellen Sartoris**, Grand Rapids Field Coordinator. Patti will be completing her master's degree in Social Work in June 2011. She has a cumulative GPA of 3.89. Patti epitomizes



Left to right: Jean Hibbard, Student Services Coordinator for WMU-Grand Rapids; Patti Dillard, 2011 GRAHEN Outstanding Adult Learner; Mary Ellen Sartoris, Social Work Field Coordinator for WMU-Grand Rapids.

the adult learner, returning to earn her graduate degree as a mother of three adult children and a grandmother. But she is more than just a non-traditional student. Patti traveled to Africa to work in an orphanage with over a thousand children suffering from neglect and disease. She led a group to China to run a camp for children of missionaries. Patti has been active in the Grand Rapids community working with the mentally ill homeless. She is regarded as a natural leader by her teachers and as a caring volunteer by her church. Her pastor says, "...Patti's unwavering desire to help people and her devotion to those in need exemplifies the best of what we want to see in people." GRAHEN is a nonprofit consortium composed of 13 local institutions of higher education that have degree-granting programs for adults. The mission of GRAHEN is to create an awareness

of lifelong learning opportunities for adults at colleges and universities in the Greater Grand Rapids area. These schools work collaboratively to promote lifelong learning in the West Michigan area, foster discussion of issues in higher education, and encourage employers to support professional development of their employees through educational fairs.

College of Health and Human Services

Items of Academic Interest

Students in the WMU Occupational Therapy Master's Program at the Graduate Center - Downtown in Grand Rapids have been developing valuable connections with the residents at the Lincoln Square Retirement Living complex on the northwest side of Grand Rapids. They have met regularly with residents and fostered a trusting personal and professional rapport with them, working with Debbie Hoyt, Life Enrichment Coordinator there. Students participated in several activities which supported their professional development while benefitting the elders with whom they worked. They interviewed residents to learn their life stories, practiced the use of therapeutic screening tools--including a safety screening of individual apartments--and hosted



Disney World, here we come!

a health fair that inspired residents to challenge each other for improved strength. The culminating event for the class was a "Vacation Paradise Excursion" presented to residents the morning of Wednesday, April 20, 2011. Students displayed attractive posters representing travel destinations, points of interest and itineraries. Key to the presentations were adaptive techniques that could

Continued on next page

actually make the trip possible for those with a variety of potentially limiting conditions. According to organizing faculty member **Lynn Martinelli**, "The students demonstrated sincere caring and concern in all of these encounters. They took full advantage of this experiential learning and opened doors for the elders to express themselves and experience new possibilities."

Faculty and Staff Accolades



Dr. Sharie Falan

WMU Bronson School of Nursing (BSON) Assistant Professor **Dr. Sharie Falan** and Haworth College of Business (HCoB) Professor **Dr. Bernard Han** co-authored the following article: Falan, S. and Han, B. (2011). Moving towards efficient, safe, and meaningful healthcare: issues for automation. *International Journal of Electronic Healthcare (IJEH)*, Vol. 6, No. 1, 76-93. Falan and Han also presented Integrating

Health Care and IT Education: An Interdisciplinary Project at the 4th Annual Scholarship of Teaching and Learning Conference at the WMU Fetzer Center on May 20 and Integrating health care education through an interdisciplinary project - An innovative pedagogy that promotes active learning with the business community at the 2011 Merit Member Conference in Ann Arbor, Mich. on May 18.



John P. Mellein

John P. Mellein, a WMU School of Social Work (SSWK) alumnus and a professor with SSWK since 1999, will be retiring at the end of Summer II 2010-11. John joined the faculty after 27 years of employment with the Kalamazoo Consultation Center, where he served as executive director for the last 12 years of his employment. The agency provided outpatient mental health counseling services

and was one of the most sought after placement sites for clinical interns majoring in social work, psychology and counseling psychology. At WMU, John taught courses in both the B.S.W. and M.S.W. programs. For the past 12 years, he served as a faculty liaison for graduate and undergraduate students placed in agency settings throughout Southwest Michigan, and was interim field education coordinator during the 2005-06 academic year. In addition to his teaching responsibilities, he assisted SSWK's director for many years, developing and

implementing several administrative projects. John's commitment to community involvement continued throughout his professional life and will go on after his retirement. He plans to remain connected with SSWK. To continue his legacy of service and scholarship there, he has established a permanent endowment that will provide an annual scholarship to a B.S.W. student.



Dr. Carla Chase

Carla Chase, Ph.D., associate professor in the WMU Occupational Therapy program is co-editor of *Occupational Therapy and Home Modification: Promoting Safety and Supporting Participation*, a book and series of continuing education opportunities. The publication is the culmination of many years of Dr. Chase's work as an entrepreneur and researcher in the field of home modifications and universal design.



Dr. Ann Chapleau

Ann Chapleau, Ph.D., assistant professor in the Occupational Therapy Department, presented the poster *Joining Accreditation Council for Occupational Therapy Education Standards and the Centennial Vision Through Innovative Community-Based Coursework at The American Occupational Therapy Association's 91st Annual Conference and Expo*, April 14-17, 2011 in Philadelphia.

In May 2011, the WMU School of Social Work (SSWK) received the 2011 Ann Shafer Community Service Award from S.A.F.E. Place, a domestic violence shelter and information center in Battle Creek, Mich. The Award is given annually to an individual or organization that has significantly impacted the issue of domestic violence; the social work program was recognized for the contributions of the internship program over many years. SSWK Director **Dr. Linwood Cousins** accepted the award on the school's behalf at the organization's SAFE at Home Celebrity Server Dinner and Auction on May 6. The award honors the late Ann Shafer, a community advocate and Calhoun County Commissioner. Shafer founded the Battle Creek Chapter of the National Organization for Women and served on the S.A.F.E. Place Board of Directors from the organization's inception until her death in January 1991.

Student and Alumni Accolades

Since her high school years in Bangor, Michigan, **Linda Rzoska** has been creating artwork, whether for her own personal expression or for commercial and business purposes. She earned her bachelor's degree in art from WMU in 1976 and continued her education



Artwork by Linda Rzoska

with graduate courses at Western and a master's degree focused on arts management and curriculum development from Aquinas College in 2005. Through her recent work, this alumna strives to communicate the soul or spirit of a place she has witnessed, and to express a living relationship between humans and the landscape. An exhibit of this work will be on display until June 30 in the second floor gallery of the WMU College of Health and Human Services. A reception, which is free and open to the public, will take place on Wednesday, June 8 from 4 to 6 p.m. in the gallery. In 2000 Rzoska joined the faculty of Kalamazoo Valley Community College, where she is chair of the Center for New Media's Art and New Media Program. She has received a number of awards for her illustration and fine art, notably two International Awards of Excellence from the Society for Technical Communications. Her artwork has been selected for numerous juried shows and is represented in many private collections. She has been an artist in residence at the Burren College of Art in Ireland, and her most recent solo exhibits were in It Skildershuis Atelier in Leeuwarden, The Netherlands and The Burren College of Art, Ireland. The exhibit can be viewed from 8 a.m. to 9 p.m. Monday through Thursday and 8 a.m. to 5 p.m. Friday and Saturday. For more information, contact **Gay Walker** at 269/387-3839 or gay.walker@wmich.edu.

WMU Bronson School of Nursing RN to BSN student **Dawn Johnston** is a full-time flight nurse for West Michigan Air Care and is mounting a legislative effort aimed at methamphetamine production. "I'm fed up with transporting people who burn themselves up in meth labs," Johnston says. "The cost to our local governments, healthcare resources and to the children affected because of meth lab activity is very troubling, and labs are even blowing up in motels and apartment buildings, threatening the public. It's time we did something about it." Johnston is pushing legislation that would make pseudoephedrine a prescription drug, just as it was before 1976. "It's the only effective means of combating the problem," she states. She is in the process of completing a report on the human and financial impact of meth labs in Michigan. After she's finished she will contact Michigan legislators across the state to educate them about the need to pass a pseudoephedrine prescription drug law. Through her contacts with law enforcement, Johnston has already found a legislative ally--former St. Joseph County sheriff and current state Rep. Matt Lori. Lori is drafting legislation that targets a total of 15 drugs used to make meth, including pseudoephedrine. The drugs would still be available by prescription. Johnston knows she has an uphill battle because she's fighting well-funded and well-connected drug companies that want to keep pseudoephedrine an over-the-counter drug. "It will be a tough fight, but there's a lot of support now," she says. "Law enforcement and healthcare professionals know they could shrink meth labs by July if the bill passes. And the law would put millions back into our state budget, making heroes of a lot of legislators." For more information, visit [Michigan Meth Lab Elimination Act on Facebook](#).



Dawn Johnston

Occupational therapy students **Jessica Diekema** and **Kristen Droste** were named the 2011 Marion R. Spear Outstanding Occupational Therapy Student Award recipients. Alumna **Marion R. Spear** founded the WMU OT program, one of the first five such programs in the nation, in 1922. Ms. Spear also served as the program's director and chair for many years, and the occupational therapy clinic at the WMU Unified Clinics is named in her honor.

Upcoming Events



On Tuesday June 14, 2011 the WMU Center for Gerontology will hold a reception to announce the establishment of the Center and to recognize the Founding Faculty Fellows: **Carla Chase, Ed.D., Patricia Fuehr, FNP-BC, Debra Lindstrom-Hazel, Ph.D., Maureen Mickus, Ph.D., Sandra Glista, M.S., Carol Sundberg, Ph.D., and Donna Weinreich, Ph.D.** The reception will take place from 4-6 p.m. in Room 4010 of the College of Health and Human Services. A brief program at 5 p.m. will include remarks by WMU President **John M. Dunn**, Provost **Tim Greene** and Dean **Earlie M. Washington**. Those who plan to attend should phone at (269) 387-9600 or email gerontology-info@wmich.edu by June 8, 2011. For more information, visit <http://www.wmich.edu/hhs/centers/gerontology/index.html>.

College of Aviation

Items of Academic Interest

The National Association of Flight Instructors (NAFI) executive director, Jason Blair, is back in Oklahoma City this week to work with the FAA's Office of Airman Testing to discuss that division's work to refine airman knowledge tests. NAFI has teamed up with AOPA and a group of educators from Embry-Riddle Aeronautical University, Liberty University, the Professional Aviation Board of Certification, and Western Michigan University to look at some of the processes that the FAA uses to develop and implement those tests; our goal is to understand this process better and help develop guidelines and materials that allow instructors to appropriately train their students who are preparing for these tests. We continue to work diligently on this issue because it affects every student we work with. The FAA is a good partner to the flight-training community, and it

shares the common goal of providing good-quality tests that efficiently evaluate the knowledge pertinent to the certificates our pilot-applicants are pursuing.

On May 11th students from Washington Writers' Academy received a visit from the College of Aviation. The college brought to the school an aircraft which was retrofitted for display by aviation maintenance students. The plane was brought to the school on a trailer, and set up in front of the play ground. Each student from preschool through 5th grade got the opportunity to sit in the cockpit. Students learned about the different parts of the plane, what the flight instruments tell you, and how the four forces of flight work together to make a plane fly. In preparation for their field trip to the College of Aviation 4th, graders received a special presentation and practiced making paper airplanes. The staff from the college hopes that the plane not only introduces aviation to students, but also helps them see the importance of learning math and science in school.



WWA students with the mobile aircraft created by aviation maintenance students.

Student and Alumni Accolades

Western Michigan University's precision flight team, the Sky Broncos, took off from its Battle Creek, Mich., home field May 13 to head for Ohio State University to compete in the May 16-21 National Intercollegiate Flying Association's championship competition. A team of 11 Sky Broncos will be among some 300 students from 30 colleges and universities around the nation vying for top honors at the 2011 NIFA Safety and Flight Evaluation Conference--known as SAFECON. The event will be held at the Ohio State University Airport in Columbus, Ohio. The WMU team is a perennial favorite in national competition. The Sky Broncos have placed among the top three in 16 of the past 19 years. They won the national championship twice during that time--in 1998 and 2002. Teams qualify for the national event by winning or placing second in one of the 11 NIFA regional competitions held each academic year. **Steve Tkachuk,**

Continued on next page

aviation specialist on the flight staff of WMU's College of Aviation, is sharing head coach responsibilities with **Ryan Seiler**, also an aviation specialist with the college. The pair will travel with the team to Columbus. Tkachuk says the team is dedicating its work at nationals this year to a former Sky Bronco, U.S. Air Force Capt. **Jeffery Haney**, who was killed in November when his F-22 Raptor went down in the Alaskan mountains during a training mission. Haney was a former team captain of the Sky Broncos and helped lead them to a national championship in 2002. Haney's name has been painted on the side of the Cessna 150 that he flew in the 2002 competition, and it will be flown by several current team members during this year's competition in Columbus.



Cessna at WMU College of Aviation.

College of Education and Human Development

Items of Academic Interest

WMU Board of Trustees approved the creation of an event management minor in the Department of Health, Physical Education and Recreation. The minor utilizes University expertise and responds to both growth in professional opportunities and increased student interest in the subject.

WMU's new hybrid online master's degree program in Special (Adapted) Physical Education has accepted 27 students who have the opportunity to earn a free master's degree, with tuition and textbooks covered by a federal grant. The initiative, announced in January, is supported by a \$1.18 million grant from the U.S. Department of Education. The work is directed by **Dr. Jiabei Zhang**, professor of adapted physical education, coordinated by **Dr. James Lewis**, associate professor of recreation and technology, and assisted by **Mrs. Munselle Pientka**, office coordinator of the Department

of Health, Physical Education and Recreation. In addition to tuition and textbooks, the grant provides an on-campus adapted physical education lab staffed by two graduate assistants. Also involved in the project are **Dr. Yuanlong Liu**, professor of measurement and evaluation, who will assess the effort, and WMU President **Dr. John M. Dunn**, professor of adapted physical education, who has served as a consultant on the grant. An additional 11 graduate students will be recruited to begin the program in fall 2012. Those interested in the program should contact Dr. Jiabei Zhang at ZHANGJ@wmich.edu or (269) 387-2949.

A dozen students headed to WMU are among recipients of the highly competitive W.K. Kellogg Foundation's Woodrow Wilson Michigan Teaching Fellowships announced in a ceremony in Gov. Rick Snyder's office at the Capitol. WMU is one of six Michigan universities invited to recruit both recent college graduates and those seeking a different career for three-year fellowships designed to attract promising educators with strong backgrounds in science, technology, engineering and mathematics--known as STEM disciplines. Fellows receive \$30,000 to pursue a customized master's degree program that prepares them to teach in high-need urban or rural secondary schools in seven local districts across the state. The inaugural class of WKKF-WW Michigan Teaching Fellows who will study at WMU includes newly minted college graduates from colleges across Michigan as well as veteran science professionals who earned their degrees around the nation and as long ago as 1979. The Battle Creek, Mich.-based W.K. Kellogg Foundation launched the statewide fellowship program in 2009 with \$18 million in support. Sterling Speirn, president and CEO of the Kellogg Foundation, joined Gov. Rick Snyder and the Woodrow Wilson National Fellowship Foundation President Arthur Levine in announcing the inaugural class of fellows. The fellows were selected from a highly competitive pool of 1,500 applicants hailing from a variety of experiences and former careers in math- and science-related fields.

Faculty and Staff Accolades

Brian Horvitz (ELRT) will be presenting a paper June 29, 2011 at ED-MEDIA 2011--World Conference on Educational Multimedia, Hypermedia & Telecommunications to be held in Lisbon, Portugal. He is presenting on behalf of his co-authors **Andrea Beach** (ELRT) and **Mary L. Anderson** (CECP). Their paper is titled "The Transition to Online Teaching: Examining Faculty Motivators, Demotivators and Self-Efficacy". Travel to this conference will be possible, in part, through an award from the Diether H. Haenicke Institute for Global Education's International Education Faculty Development Fund. Funding has also been provided by the College of Education and Human Development Travel Fund and the Department of Educational Leadership, Research & Technology Travel Fund.



Dr. Brian Horvitz



Dr. Andrea Beach

Counselor Education and Counseling Psychology Professor **Gary H. Bischof**, Counseling Psychology doctoral student **Mark Barajas**, and Marriage, Couple & Family Counseling master's students **Bethany Warnaar** and **Harkiran "Nina" Dhaliwal** recently had an article published in the Michigan Family Review. Thematic Analysis of the Experiences of Wives Who Stay with Husbands who Transition Male-to-Female is a qualitative analysis of the experiences of the wives of 14 male-to-female transsexuals appearing in Virginia Erhardt's 2007 book, *Head over Heels: Wives Who Stay with Cross-Dressers and Transsexuals*.



Dr. Gary Miron

Between July 2010 and March 2011, **Dr. Gary Miron** served as an adviser for a project that investigated irregularities in student assessment data in 5 states. The work involved a systematic review of data that focused on precipitous gains or drops in mean student performance coupled with

irregular increases or decreases in student erasures that involved wrong-to-right changes in answers. The findings from the District of Columbia garnered the most attention because they coincided with the tenure of Chancellor of Public Schools, Michelle Rhee, who was giving teachers \$8,000 and administrators \$10,000 for demonstrating large gains. Dr. Miron's involvement in this project was highlighted in a front-cover story in *USA Today* as well as in a 10-minute interview he provided to MSNBC in early April.

For the last two years, students at WMU have been participating in academic service learning through a program organized by the Division of Multicultural Affairs and funded by a grant from the Michigan Campus Compact. Teacher candidates in the Secondary Education Program working with **Drs. Allison Kelaher-Young** and **Jeffrey Jones**, and Spanish students working with **Dr. Michael Millar**, are engaged in local schools and community organizations to provide academic and social support to K-12 students. This opportunity allows Western students to make important connections between course concepts and youth experience, and an evaluation is identifying positive outcomes for both Western and area K-12 students. **Dr. Erika Carr** and **Diana Hernandez**, the Associate Director and Director of the Division of Multicultural Affairs, are assisted by a number of graduate students and community practitioners in implementing this program, including **Ashley King, Derek Andree, Walter Malone, Tania Echavarria, Lori Mercedes, and Angelita Aguilar-Nivala**. This working group recently presented this service program at the annual Governor's Education Summit in Lansing.

Student and Alumni Accolades

A statewide organization presented community service awards to five Western Michigan University students during the 15th annual Outstanding Student Service Awards ceremony April 9 at the Kellogg Hotel and Conference Center in East Lansing, Mich. The awards were presented by the Michigan Campus Compact, a coalition of 38 colleges and universities from around the state. The recognition ceremony honored Michigan college students who have demonstrated outstanding dedication to community service during their college years. WMU students who received awards were:

- **Angela Bowman**, a sophomore from Taylor, Mich., studying social work.
- **Natalie Graetzel**, a senior from Brighton, Mich., studying art.

Continued on next page

- **Marida Little**, a sophomore from Detroit studying social work.
- **Kathleen Paauwe**, a senior from Mattawan, Mich., studying family studies.
- **Janell Raisanen**, a junior from Waterford, Mich., studying accountancy.

Paauwe and Raisanen received the Commitment to Service Award, which recognizes two students per MCC member campus for either the breadth or the depth of their community involvement. Only 45 students of the 350 honored this year received this award. The remaining three students received the Heart and Soul Award, which recognizes students for time, effort and personal commitment to their communities through service.

Counselor Education and Counseling Psychology faculty and students presented at the Michigan Association for Marriage and Family Therapy annual conference in Lansing in mid-April. **Bradly Hinman**, doctoral student in Counselor Education, conducted a workshop on "Interventions to Treat and Reduce Internet Pornography's Impact on Adolescents." Presenting posters were master's students **April Oglesby** and **Anna Proulx**: Considerations for Treating PTSD in African-American Families," and Counseling Psychology doctoral student **Brian Doane** and faculty member **Dr. Gary Bischof**: "Handling Secrets in Couple Therapy."

Aoi Yamanaka, master's student in Higher Education Student Affairs Leadership, is the 2010-11 recipient of the Paul and Phyllis Griffeth Endowed Scholarship for Outstanding Promise as a Student Affairs Professional. **Sara Morales**, a Higher Education Student Affairs Leadership masters student and full-time hall director at Michigan State University (MSU), received the MSU Department of Residence Life Director of the Year for 2010-2011.



WMU alumnus Richard Njus

A longtime educator, author and Western Michigan University graduate returned to his alma mater Tuesday, April 19, to talk about his book, which is gleaned from his more than three decades in the education field. As part of the College of Education and Human Development's Distinguished Speaker Series, Njus held a reception and book signing following his presentation in the Fetzer Center lobby. Njus, an elementary school principal for more than 30 years, wrote the book "Touching Hearts, Educating Minds," which is described as a "story of a

school with soul and determination." In an era of widespread standardized testing of students, grading of schools and government mandates placed on educators, the book shares what truly can make a difference. "Touching Hearts, Educating Minds" shows that it's not tests, curriculum and mandates, but the culture of a school in which those are played out that most deeply impacts a child's learning. During his long career as an educator, Njus has challenged his colleagues to dream and go beyond the expectations of the educational establishment and schooling-as-usual mindset. He taught second and sixth grade before taking his first job as principal in 1979, going on to serve as principal of four elementary schools, two of which he opened. Njus earned bachelor's and master's degrees in educational leadership at WMU and has shared his deep passion for creating learning environments that touch the lives of students as a motivational speaker and national trainer for school volunteerism. He has led seminars on personality profiles and consulted and conducted professional development programs on leadership and culture development in schools. He has also worked with the U.S. China Center at Michigan State University in the creation of a school in Beijing, China. More information about Njus is available at richardnjus.com.

Alumna **Stacy Reed** was awarded "Special Education Teacher of the Year" in St. Joseph County. She is currently a special education teacher for Mendon Middle and High Schools. She wants to thank the Department of Special Education and Literacy Studies because "this (award) is a direct reflection of the education I received at WMU."

Assessment of Student Learning



2011 Recipients of the State Farm Scholarships

The State Farm Foundation made it possible to provide financial assistance to thirty students in the College of Education and Human Development. Some of these students completed their internships in Spring 2011 and the remainder of the awardees will intern this Fall. Awards, valued at \$1,000 each, were made based upon the following criteria:

Continued on next page

- commitment to pursue a career in public education
- experience in urban settings and/or schools struggling to meet AYP (Adequate Yearly Progress)
- financial need
- preparation to teach in core academic subject areas
- special circumstances impacting the applicant
- scholarship

A reception was held on Wednesday, April 13 in Lansing to honor recipients of the State Farm Foundation Intern Teaching Scholarship as well as State Farm for its gift to the College. Legislators from the hometowns of recipients attended this event, hosted by WMU's Development Office. In addition, staff and faculty members of the College of Education and Human Development, student's family members, mentor teachers, and University Coordinators were also present at this ceremony.

The Evaluation Center

Items of Academic Interest

For the seventh consecutive year, Heifer Project International has contracted with The Evaluation Center to evaluate its poverty reduction projects around the world. WMU faculty and students will travel to Albania, Nepal, and Uganda to collect data on Heifer's impact on the lives of project recipients and their communities. The project is led by **Dr. Chris Coryn**, Principal Investigator, and Co-Principal Investigators **Drs. Michael Scriven** and **Thomaz Chianca**, who were at the Center on May 11-12 to train those going into the field for this project. In 2008, Dr. Coryn replaced Dr. Scriven as the director of WMU's Interdisciplinary Ph.D. in Evaluation (IDPE). Dr. Chianca, who was among the first cohort of IDPE graduates, is an international evaluation consultant and a dental surgeon at the Universidade Federal do Rio de Janeiro where he teaches research methods for graduate students.



Chris Coryn, Daniel Stufflebeam, James Sanders, Michael Scriven, and Thomas Chianca. Drs. Coryn, Scriven, and Chianca are leading a team evaluating Heifer Project International projects in three countries this summer.

Graduate College

Items of Academic Interest

The Graduate Center for Research and Retention will feature **Lincoln Jiang**, doctoral student in Statistics and Doctoral Associate with the Graduate Center for Research and Retention conducting an Overview of SPSS Workshop on Thursday, May 19 from 6 to 9 p.m. The workshop will take place in the Computer Laboratory in Room C-224 of the Parkview Campus. This workshop is designed to demystify the process, cultivate confidence, generate enthusiasm, and inspire attendees to finish their research. Students will learn to create a simple data set for analysis, enter different types of data into "SPSS" for analysis and explore options for displaying and analyzing the data set. For more information please call Dr. Marianne Di Pierro, Director, Graduate Center for Research and Retention at 269-387-8249.

Mr. Lincoln Jiang, doctoral student with the department of Statistics and Doctoral Associate at the Graduate Center for Research and Retention, will present an Overview of Statistical Concepts Workshop on Thursday, May 12, 2011. The workshop will take place from 6 to 9 p.m. in the Computer Laboratory, Room C-224, Parkview Campus. Please visit the online tutorial available at the Graduate College website at <http://www.wmich.edu/grad/> to prepare for the workshop. Lincoln will go over the following statistical concepts: Basic Terms; Collecting Data; Frequency Table; Measures of Central Tendency and Variation; The Normal Curve, Z Score and Confidence Interval; Correlation; Linear Regression; Hypothesis Testing; T-Test; One Way Analysis of Variance; Chi-Square Test and Presentation of Data. If you have any questions, please call **Dr. Marianne Di Pierro**, Director, Graduate Center for Research and Retention at 269-387-8249.

Julien Kouame, Ph.D. student in the Evaluation, Measurement, and Research program and Doctoral Associate at the Graduate Center for Research and Retention will be conducting a Research Data Management Workshop on Tuesday, May 24 from 2 to 4 p.m. in Putney Lecture Hall at the WMU Fetzer Center. The aim of this workshop is to provide researchers with the knowledge required to optimize database performance and to ensure quality of results. Students will learn how to create a solid foundation for the research database, as well as data management techniques and tools. Mr. Kouame will also teach free and easy ways to protect research data.

Faculty and Staff Accolades

"Personalizing Academic Misconduct: An Approach for the Graduate Classroom," an article written by **Dr. Marianne Di Pierro**, will be published this month by the Journal of Faculty Development. The paper explores the overt nature of the impact of plagiarism and discusses strategies that professors can impart to graduate students to inform them about ethical obligations to the research process.

Student and Alumni Accolades

The Graduate College is proud to announce the Spring 2011 winners of the Gwen Frostic Doctoral Fellowships and Patricia L. Thompson Dissertation Awards. Funding for the Frostic Fellowships originates in an endowment generously made by the late poet, artist, and naturalist Gwen Frostic, Western Michigan University Class of 1929. Gwen Frostic Doctoral Fellowships are highly competitive awards that range from \$2,000 to \$4,000; only a limited number of fellowships are available. This year's awardees are **Reem El Asaleh**, Paper Engineering, Chemical Engineering, and Imaging; **Stephanie Evergreen**, Interdisciplinary Evaluation; **Melanie Kintz**, Political Science; and **Tova Samuels**, Chemistry. The Patricia L. Thompson Dissertation Awards are made possible by a gift from **Dr. Donald Thompson**, former vice president for research and dean of the Graduate College. The awards are to assist doctoral students with expenses associated with the dissertation. Financial need is not a consideration. Patricia Lee Thompson Dissertation Awards ranging from \$2,000 to \$3,000 have been given to **Michelle Barger**, Geosciences, and **Daniel Kueh**, Biological Sciences.

The Graduate College is proud to announce the winners of the March-April Graduate Student Research Grants. The Graduate Student Research Fund was established to support graduate students engaged in independent scholarly research, scientific inquiry, inventive technology, and original artistic activity. The fund is intended to help students pay extraordinary or unusual costs incurred in research projects. The grants fund up to \$1,000 toward these extraordinary costs. The current recipients are **Amanda Austin**, Psychology; **Justin De Sousa**, Health, Physical Education, and Recreation; **Catherine Gayman**, Psychology; ***Patrick Harris**, History; **Megan Luchies**, Geography; **Mary Peet**, Psychology; **Andrea Blanka Szell**, Geography; ***David Terry**, History; **Thomas Veldman**, Geography, and **Elizabeth Younker**, Speech Pathology and Audiology. Students with a star by their name also received a

supplemental international travel grant of up to \$600 funded by the Graduate Student Advisory Committee.

The Graduate College is proud to announce the winners of the March-April Graduate Student Travel grants. The Graduate Student Travel Fund was established to support graduate student travel to meetings or events sponsored by professional organizations for the purpose of reporting the results of research, exhibiting or performing creative works, or otherwise disseminating results of their scholarly activity. The current recipients, each of whom receive up to \$700, are **Hassan Al-Momani**, English; **Sai Guruva Reddy Avuthu**, Electrical and Computer Engineering; ***Asma Ayyad**, Physics; ***Joshua Bench**, Counselor Education and Counseling Psychology; **Yusuf Bilgic**, Statistics; **Hemant Bohra**, Paper Engineering, Chemical Engineering, and Imaging; **Kevin Douglass**, Chemistry; **Reem El Asaleh**, Paper Engineering, Chemical Engineering, and Imaging; **Angela Garrison**, Counselor Education and Counseling Psychology; **Theresa Green**, Interdisciplinary Health Sciences; **Jesse Hysell**, History; ***Darshika Keerthisinghe**, Physics; **Petra Kohler**, Biological Sciences; **Marisha Lecea**, Political Science; ***Lyudmyla Pustelnyk**, Communication; **Katherine Rowbotham**, Biological Sciences/Science Education; **Raymond Sheets, Jr.**, Counselor Education and Counseling Psychology; **Natalie Truba**, Psychology; **Jessica Urschel**, Psychology; **John-Mary Vianney**, Biological Sciences; ***Lydia Walker**, Comparative Religion; ***Samanthi Wickramarachchi**, Physics; and **Jiangang Xia**, Educational Leadership, Research, and Technology. Students with a star by their name also received a supplemental international travel grant of up to \$600 funded by the Graduate Student Advisory Committee.

Upcoming Events

The four major research universities in the state of Michigan have established the Michigan AGEP Alliance (MAA) to advance under-represented minority students in the fields of science, technology, engineering and mathematics (STEM) as they pursue graduate degrees. This alliance includes the graduate schools at the University of Michigan, Michigan State University, Wayne State University, and Western Michigan University. There is another Michigan AGEP Alliance (CUNY-MAA) that seeks to advance underrepresented minority students in the social, behavioral and economic sciences. Each of these universities operate both individually and collectively to provide a wide-ranging

Continued on next page

spectrum of programs to encourage the persistence of underrepresented graduate students, including workshops, lectures and mentoring opportunities. In May 2011 Western Michigan University will host the MAA Dissertation Writing Retreat. It was developed to help students progress through the difficult stages of the dissertation writing process toward completion. This is a multi-day commitment to focus on the dissertation: students will write from 9 a.m. to 11 p.m. each day. The Dissertation Writing Retreat activities focus on places where students typically have problems: conceptualizing a topic, developing a pre-proposal, writing a literature review, writing a proposal, analyzing data, writing the last chapter, and editing. This year the retreat will take place from May 23 to 26 at Kellogg Biological Station and Conference Center, with **Dr. Wendy Carter-Veale**, dissertation coach and founder of HigherEd Consulting L.L.C., mentoring students from all four MAA universities. From Western Michigan University **LaTasha Chaffin**, **Ladel Lewis**, **Stephanie Means**, and **Oscar Neal** will participate. In addition, there will be three students from Michigan State University, six students from University of Michigan, and three students from Wayne State University.

Haworth College of Business

Items of Academic Interest

Dr. Andrew Targowski, professor of BIS, received a letter from the Office of the Vice President of the United States in response to the vice president's receipt of the "Sustaining the Business of Health Care in America" conference proceedings. Vice President Joseph Biden, Jr. acknowledged the efforts put forth to "address the issues of our time." A copy of the letter will be displayed the College display case.



Dean Kay Palan welcomes advisors as part of the first annual Community College Partner Day in May.

The College recently hosted the first annual Community College Partner Day. Twelve advisors attended, representing seven different community colleges from the surrounding area. The advisors engaged in a discussion of the transfer process with WMU and Haworth College of Business administrators and staff who have responsibility for the recruiting, advising and admissions functions. Participants learned of the many students who have won awards in national and international competitions, including students who began their studies at community colleges. These awards highlighted the niche programs that distinguish WMU's Haworth College of Business from other business schools around the state. The guests appreciated the College's in-house Career Center and left with customized transfer guides, which will soon be available on the web.

The human resource management faculty is pleased to learn that the Society for Human Resource Management has renewed WMU's Bachelor of Business Administration in Human Resource Management. The program fully aligns with curriculum guidelines first established in 2004. The SHRM letter stated, "Thank you again for being an example to other universities that teach HR through your strong HR curriculum in the BBA program."

The human resource management faculty is pleased to learn that the Society for Human Resource Management has renewed WMU's Bachelor of Business Administration in Human Resource Management. The program fully aligns with curriculum guidelines first established in 2004.

Faculty and Staff Accolades

Presentations

- **Dr. Chris Korth**, professor of finance, was the keynote speaker at an international banking conference in Kerala, India in February. The title of his talk was "The International Banking Crisis and its Impact upon American Banks."

Media

- **Dr. Chris Korth**, professor of finance, was interviewed by Michael Arney, a newscaster with Westwood One's Metro Radio Networks on the possible impact of the Japanese earthquake catastrophe upon the United States.

Publications

- **Flanagan, D. J., O'Shaughnessy, K.C. and Palmer, T. B.** (2011). Re-Assessing the Relationship between the Fortune Reputation Data and Financial Performance: Overwhelming Influence or Just a Part of the Puzzle? Corporate Reputation Review. Vol. 14, Issue 1, pp: 3-14.



Dr. Satish Deshpande

Dr. Satish Deshpande, professor of management, has seen results of his study on job satisfaction of surgeons cropping up on such media outlets as Fox News Latino, International Business Times, Hispanically Speaking News and even international publications. The study was first reported in the Annals of Surgery and analyzed data for 762 U.S. surgeons in 2008 on factors that influenced their job

satisfaction. Quality of care, time spent with patients and the threat of malpractice were the three major practice-related factors that impacted career satisfaction of surgeons. In fact, time spent with patients was highly correlated with quality care and threat of malpractice lawsuits. Also among its findings, Deshpande's research suggests surgeons whose patients are predominantly Latino tend to be less happy with their jobs than their peers and that the difference may have to do with language and cultural barriers. There was no similar pattern seen when it came to black or Asian patients. The study also underscored a need for more minorities and women in the field of surgery. However, Deshpande, the study's lead researcher, cautioned, "You need to be careful interpreting that finding." Another possibility influencing the career satisfaction of doctors who treat more Hispanic patients is the high number of patients without insurance, making money an issue. But, because

researchers were analyzing past survey results, they could not ask respondents for more detail. Deshpande adds that job satisfaction was generally high among surgeons who said they had access to translation services for patients who spoke a different language. "So we think most of it has to do with language and cultural issues," Deshpande says.

Student and Alumni Accolades

Haworth College of Business graduates attended a reception hosted by the College prior to spring commencement ceremony.



Second from left is graduate Sorina Dodu, from Moldova, with her family members, Dr. Donald Gribbin, chair, Department of Accountancy, and Dr. Kay Palan, dean.

HR students compete in regional and campus competitions Students in the Human Resources program were busy preparing for and participating in external and internal competitions during the spring semester. A WMU human resources team participated in the Regional HR Games competition in Chicago in April. The students applied their HR knowledge through participation in a case study competition by arriving at and presenting realistic solutions to case studies. Jeopardy-style matches tests students HR knowledge Six teams competed in a campus HR Games competition in April. During the Jeopardy-style matches, student teams were tested on knowledge of the human resource field. SHRM receives Superior Merit Award The WMU student chapter of SHRM was recently awarded the 2010-2011 Superior Merit Award designation - the highest rating a student chapter can earn.



Participating in the Regional HR Games from left are team members Abbee Miller, Ashley Elder, Ashley Heckman, Dr. Satish Deshpande, team advisor, Nicole Drew, Tracy Masserant and Patricia Smith.



WMU Human Resource students participated in an internal HR Games in April. From left Abbee Miller and Ashley Heckman, first place team members, Dr. Dan Farrell, HR program director, Andrea Foster, Target and Ashlee Elder and Nicole Drew, second place team members.

Three MBA teams from the MGMT 6140 Business Venturing class, taught by **Dr. K. C. O'Shaughnessy**, professor of management, and assisted by **Dr. Dan Farrell**, professor of management, presented their business plan concepts to Grand Rapids-based dmStrategists, a professional services firm. The company specializes in technology solutions for leading edge companies and organizations whose core business strategies are guided by the principles of corporate social responsibility. The company approached WMU requesting assistance through student input. In addition to economic performance, the company works to improve the environmental, social, cultural and diversity impact of businesses.



MBA students present concepts to dmStrategists representatives

Three student teams competed in the WMU-Target Case Competition which concluded with final presentations in mid-April. Judged by Target executives **Alison Stephen**, district team leader, and **Rick Miller**, store team leader, right, the members of the first place team **Jason Gaylor**, **Doug Coffman** and **Devon Sanborn** were awarded a scholarship. The scholarship funds were awarded to the Career Center director, **Linda Ickes**, in response to a grant proposal and the student teams were coached by **Phil Straniero**, executive-in-residence with the Food & CPG Marketing program, and **Dr. Duke Leingpibul**, assistant professor of marketing. To compete, the Food and Consumer Packaged Goods Marketing students conducted a SWOT analyses, researched technology trends in the food industry and identified innovative technology-based solutions. Their final presentations offered recommendations to Target executives on better ways Target stores can use technology to innovate their food marketing strategies.



From left at the WUM-Target Case Competition are Alison Stephen, Target, with students Jason Gaylor, Doug Coffman and Devon Sanborn and Rick Miller, Target.

A team of five WMU students placed fourth overall in a national marketing competition. Team members **Kara Hensley** of Woodhaven, Mich.; **John Hebert** of Portage, Mich.; **River Karaba** of Dewitt, Mich.; **Kristina Kelly** of Portage, Mich.; and **Adam Parz** of Lakeside, Mich., competed against 26 student teams from universities across the nation in the EdVenture Partners American Petroleum Institute National Case Study Competition in late April. As part of the competition, the teams were challenged to consider and answer a number of analytical questions regarding a client's brand positioning, a communication strategy or any other current strategic situation as identified by the sponsoring client. The team achieved 91 out of a possible 100 points, placing higher than teams from Wayne State University, Northwood University, University of Illinois at Chicago, University of Texas at Arlington and San Diego State University. WMU has participated in the EdVenture Partners National Case Study Competition for the past

Continued on next page

eight years, placing in the top 10 nationally each year. The team, "Radio Active," developed an integrated marketing communication campaign for the American Petroleum Institute with the goal of educating 18-25 year olds about national energy issues. The team developed a campaign using a variety of non-traditional consumer touch points and carried the tagline "It's o.k. to be crude." **Dr. JoAnn Atkin**, associate professor of marketing and advisor to the team, uses the competition as the capstone project in the MKTG 4810 Integrated Marketing Communications Campaigns class for students majoring in advertising and promotion.



The WMU EdVenture team members from left are River Karaba, Adam Parz, John Hebert, Kristina Kelly and Kara Hensley.

Upcoming Events

Mon., August 22 - WMU Marketing Scramble Heritage Glen Golf Club 11:45 a.m. to 1 p.m. - Registration/Lunch 1 p.m. - Shotgun start 5:30 to 7 p.m. - Dinner/Awards Four Person Scramble Cost: \$65/player, \$260/foursome Hole Sponsorships: \$200 - Contact: **John Weitzel** at 269.387.5532 or visit the Marketing Scramble website at: www.wmich.edu/business/marketingscramble/register.php

Fri., June 10 and Sat., June 11 - Fifth Facing East Facing West conference - The Facing East- Facing West Conference: A multidisciplinary conference on North America's relations with Asian countries, will be held at the Fetzer Center. Keynote speakers include Kenneth Davis-President, Vehicle group, Eaton and Kunirori Matsuda, Consul General of the Consulate General of Japan in Detroit. For more information, visit: www.wmich.edu/business/fefwconference/

Business Research Class The MI-SBTDC presents the class, "Fundamentals of Business Research," on Tue., June 7, from 6:30-8:30 p.m. at the Portage District Library, 300 Library Lane, Portage, Mich. Discover resources available

that can help you make informed decisions about your business' future. The Kalamazoo Public Library will share how to use its business collection to locate market research information. Learn how to determine your target market, estimate the size and locate your competition along with other information that will impact your business. Pre-registration is required. Please register on-line at www.misbtdc.org/southwestmichigan. Cost: Free Learn to Write a Business Plan The MII-SBTDC presents the class, "Fundamentals of Writing a Business Plan," on Thur., June 23, from 6 to 9 p.m. in room 3110, Schneider Hall. Creating a business plan helps you set goals, determine the resources needed to carry out your plan and foresee problems. A comprehensive business plan will determine if your business product or service is feasible. This three-hour course, taught by a MI-SBTDC business consultant, will discuss each section of a business plan: Company overview, operations, marketing, sales, financials and executive summary. Pre-registration is required. Please register on-line at www.misbtdc.org/southwestmichigan. Cost: \$30 Succession Planning The MI-SBTDC presents the class, "Succession Planning for the Small Business Owner," on Tue., June 28, from 6 to 9 p.m. in 3110, Schneider Hall. The workshop provides an overview of how businesses can increase value through the development of a succession plan. Key topics include plan components, successor identification and skills development as well as plan implementation and communication guidelines. Pre-registration is required. Please register online at www.misbtdc.org/southwestmichigan. Cost: \$30

Lee Honors College

Student and Alumni Accolades

On April 29, 2011, 83 seniors who completed the rigorous graduation requirements of the Lee Honors College (LHC) were honored by faculty, family and friends at the traditional LHC Graduate Recognition Ceremony in Shaw Theatre. LHC spring graduates were asked to select the person or persons who have been an inspiration during their undergraduate experience to present their LHC honor cords. Family members, best friends and favorite faculty were honored to perform the often teary-eyed cord presentations as every graduate shared the significance of their "corder" with the audience. The LHC graduation cords are a double cord intertwined with blue and red - colors that are distinguishable from the golden honor cord

Continued on next page

awarded by WMU for achieving Cum Laude, Magna Cum Laude, and Summa Cum Laude. Ninety percent of the LHC spring graduates wore both sets of cords during commencement. **Dr. Margaret Merrion**, dean of the College of Fine Arts, **Jessica Bigley**, LHC academic advisor, **Sarah Hagen**, LHC advising graduate assistant and **Maxwell Koopsen**, president of the Honors Student Association also assisted in the cording ceremony. LHC junior and Medallion Scholar **Charlotte Munn-Wood** led the program as emcee. Provost **Dr. Timothy Greene** introduced spring 2011 Faculty Fellows **Dr. Katherine Joslin**, professor of English, **Dr. Jerry Krueze**, professor of accountancy, **Dr. Gunther M. Hega**, associate professor of political science and spring 2011 Distinguished Service Award recipient **Steve Booher**, orientation coordinator for the First Year Experience program. Graduating seniors **Evan Snyder**, **Brenna Halpin** and **Robert Hjelmstad** provided classical music during the program.



Dr. Merrion listens as LHC graduate Chelsea Thorpe introduces her mother, Marcia Thorpe for her cording.

Upcoming Events

For students entering grades 6-9, the Academically Talented Youth Program (ATYP) at WMU's Lee Honors College is offering several weeks of summer programs including:

Students Entering Grades 6-9

- Web Page Design
- Chess

Students Entering Grades 7-9

- Graphic Novels
- Pinhole Photography
- Ceramic Face Jugs
- Poetry

New this year is the Ceramic Face Jugs workshop where students will study, design and create their own jugs while exploring different clay hand building techniques. Chess is also a new addition to the ATYP

summer program. World chess competitor and Michigan Chess Association Hall of Fame member Stan Beckwith will teach chess in a fun-filled environment for both the casual and competitive player. The ATYP summer program offers one week half-day classes for \$100 per week. Space is limited and students are encouraged to enroll before June 1. For more detailed information on the summer programs, instructors, schedule, and a downloadable registration form, please visit <http://www.wmich.edu/honors/atyp/> and click on the Register Now link under summer programs. You can also email the ATYP office at atyp-info@wmich.edu or call (269) 387-3230.

Office of Institutional Equity

Items of Academic Interest

According to the 2010 NSSE survey, what percent of freshmen participated in a community-based project (e.g. service learning) as part of a regular course? The answer is located at the end of this article. This spring, the Higher Learning Commission notified WMU of the results of last October's comprehensive evaluation visit. WMU has been granted accreditation for another 10 years. The next comprehensive evaluation will occur in 2020-21. WMU's Higher Learning Commission mandated focused visit on planning is scheduled for Monday and Tuesday, March 19 and 20, 2012. In March, the Commission rolled out its alpha version of proposed revisions to the Criteria for Accreditation. Regional forums from July through September will be conducted to discuss the suggested revisions. More information about the revised criteria and the forums, as well as an online feedback survey can be found at <http://www.ncahlc.org/>. HLC's new accreditation model, Pathways, which was announced in 2009, has launched its third pioneer cohort this spring. The full transition into the Pathways model will begin fall of 2012 for all PEAQ institutions, like WMU. According to the schedule, WMU will be among those to transition fall of 2012 and will begin in year two of Pathways' 10-year accreditation cycle. Answer to NSSE 2010 question 1k: 44% of freshmen responded that they participated to some extent in a community-based project (e.g. service learning) as part of a regular course. Additional items of interest may be found at <http://www.wmich.edu/poapa/assessment/inst-assess.html>.

University Libraries

Items of Academic Interest

University Libraries hosts visiting scholars (Medieval Studies Congress), dignitaries (Canadian Consul), alumni at class reunions, and friends and family of Western Michigan University (most recently Mrs. Linda Dunn). Currently, prospective-student tours stop in the Upjohn Rotunda of Waldo Library. Groups of First-Year Experience students visit a number of designated units, such as Special Collections and Rare Books and Central Reference. Guests may choose a general walk-through, a tour of the art collections, or specific areas such as the Digitization Center, Government Documents, University Archives, or Science Reference Databases. University Libraries warmly greeted Mrs. Dunn the last week of April. While she often visits Waldo Library, she had never explored areas not open to the general public. These are behind-the-scenes areas for the preparation of the hardcopy or electronic book, musical score, video, or database. Technical Services and the Digitization Center were two such units. In the former Mrs. Dunn rediscovered the rows of card catalogs of yore, used today as a failsafe file for all library collections. The host-team guided Mrs. Dunn to the new WMU Authors' Corner on the first floor. In April/May we have been featuring the foreign-language translations of the WMU preeminent scholar, **Dr. Paul L. Maier**. After 50 years of teaching at WMU and the publication of over 4 million items, History Professor Maier, leaves formal academe but not research, writing, and speaking. Having a personal interest in the visual arts, Mrs. Dunn spent time admiring examples of art adorning the walls from the permanent collections of the University. Among these are the American Indian artifacts collected by former WMU President **Dwight D. Waldo** on the first floor, the large paper maché wall sculpture by Stephen Hansen in the back stairwell, and



Mrs. Linda Dunn Discovers the Card Catalog in Technical Services.

the pair of paintings by Louis Blanco focusing on women reading. These paintings are examples from the art collection purchased by University Libraries. Mrs. Dunn was impressed with the order and cleanliness of the building, an achievement for the custodial staff during exam week when up to 700 students stay in the library until after midnight. Serving as a public portal to campus activities University Libraries has received great support of the facilities area. A post-tour coffee followed a tour of special collections including the vault where the rarest of bookish treasures are kept. In the debriefing we had the opportunity to inform Mrs. Dunn about the general operations, services, and collections of the university-wide library system. We talked about the proposed WMU Legacy Collections Facility and showed her the initial rendering of the future building. Contract **Mrs. Kathy Gerow**, Administrative Offices, for information about library tours: kathy.gerow@wmich.edu.



Mr. Ernesto Montes of "Treasured Library," Dallas TX, shows a facsimile of a "Book of Hours" to a potential customer in the Meader Rare Book Room, Waldo Library.

"Manuscripta aesculea: A Selection of Medieval and Renaissance Manuscripts from The Ohio State University Rare Books & Manuscripts Library" was hosted by Special Collections and Rare Books at WMU Libraries during the 46th International Congress on Medieval Studies. At the 2010 Congress medieval manuscripts co-purchased by mid-west universities such as WMU, Minnesota, and Notre Dame, with the Newberry Library, Chicago, were on display for participants at that meeting. Support for the exhibition was graciously provided by the Friends of WMU Libraries.

Faculty and Staff Accolades



Detail of Stephen Hansen's Wall Sculpture: "The West Sinks Slowly Into The Sunbelt"

Associate Professor **Michele Behr**, Off-Campus Librarian, was elected to a four-year term on the Board of the Portage District Library. She will lend her expertise and enthusiasm for acquiring information to the citizens of Portage wherein she resides. A strong board, politically active, is a requirement in these hard economic times when tax dollars are diverted away from public libraries throughout Michigan and captured for the support of other crucial community needs. Hats off Michele!



Dr. Susan Steuer, Head, Special Collections and Rare Books

"Digital Resources for Cistercian Studies at Western Michigan University" by **Sheila Bair** (Head of Cataloging) and **Susan Steuer** (Head of Special Collections) has been published in the most recent volume of Cistercian Studies Quarterly (46:2, 221-226). The article highlights the Cistercian liturgical resources which have been digitized by WMU Libraries. These can be accessed at <http://www.wmich.edu/library/digi/collections/liturgy/>.

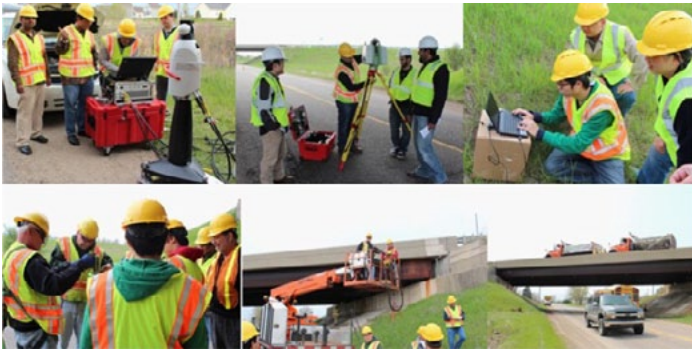
WMU has enjoyed a long and intellectually rewarding relationship with Cistercian scholars in the United States and abroad.

College of Engineering and Applied Sciences

Items of Academic Interest

The Department of Civil and Construction Engineering (CCE) researchers conducted a load testing of a bridge in Holland, MI as a part of a Michigan DOT funded project titled High skew link slab bridge system with deck sliding over backwall or backwall sliding over abutments. As the PI of the project **Dr. Haluk Aktan**, Professor and Chair of CCE, led the research team while **Dr. Upul Attanayake**, CCE assistant professor, coordinated and supervised the entire operation. "Knowing structural behavior of the high skew bridge under known loads is vital to calibrate analysis models and to develop durable design details," Attanayake said. Unique feature of this work was the integration of multiple modern technologies (Laser Tracker, Laser Scanner, and Wireless Sensor Network) to monitor bridge behavior. These technologies shorten the duration of monitoring bridge geometry, deformations, and dynamics compared to traditional technologies; thus minimizes the inconvenience to travelers while collecting quantifiable data for evaluating structures and planning other operations to assure safety and durability of infrastructure. A research group led by **Dr. Pingbo Tang** documented the bridge geometries and deformations using a laser scanner while **Dr. Xiaoyun Shao's** group recorded bridge vibrations under ambient traffic. During the whole load test procedure, coordinated data collection activities using different sensing technologies enable comparative and integrated analysis that will provide a comprehensive understanding of the bridge behavior. MDOT Fennville garage staff helped with traffic control and bridge loading operations. **Dr. Yufeng Hu** and several graduate students, **Abdul Wahed Mohammed**, **Alp Servi**, **Cem Mansiz**, **Duy Nguyen**, **Chee Kian Teng**, **Omar Kannan**, **Wadea Sindi**, and **Fahd Alaswad** contributed in various capacities.

Continued on next page

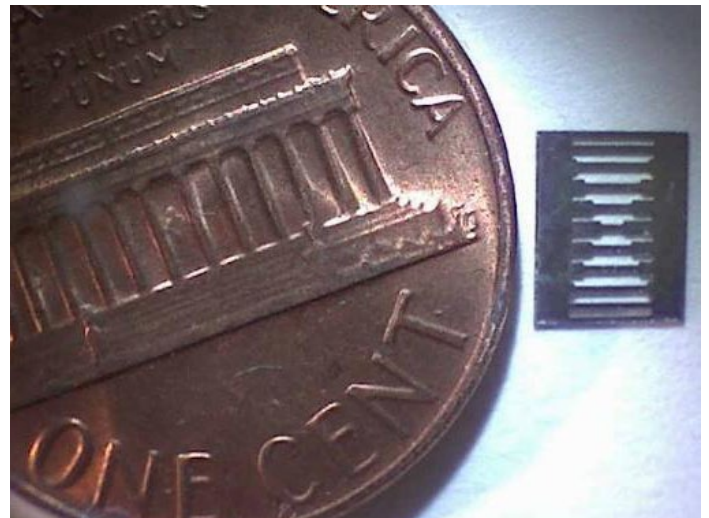


CEAS researchers testing Holland bridge for safety and durability.

"Today technology is much advanced and a bridge can be built offsite and be moved to its final location within couple hours reducing months of delays to several hours" **Dr. Attanayake** stated after coming back from Utah where he was able to get the first-hand experience of moving a bridge with self-propelled modular transporters (SPMTs). "It was one of the greatest moments in my life when I had the opportunity to witness the entire operation of moving the 354-foot, 3.8 million-pound Sam White Bridge, which is the longest two-span bridge ever moved in the Western Hemisphere, using SPMTs," he said. Utah DOT started closing the freeway, I-15, traffic in both directions on Saturday March 26 at about 9:30 p.m. and started moving the bridge at 11 p.m. The contractors were able to complete the bridge move by 4 a.m. and then opened the freeway on Sunday March 27 around 7 a.m. The experience and the contacts with Federal Highway Administration officials, DOT officials, engineers, and contractors is vital at the time the CCE researchers are working on a Michigan DOT funded project to develop short-and long-term plans for Michigan to implement such technologies. Dr. Attanayake acknowledges UDOT officials and staff, contractors, and officials from agencies such as FHWA who provided access to the bridge sites, workshops/meetings, and other events to get a wealth of information and knowledge on the latest technologies in Bridge Engineering. Further, he applauds UDOT's efforts with their outreach activities to educate the public with all the activities and allowing them to witness these great marvels of engineering to appreciate what contributions engineers can make to provide a safe and uninterrupted commute.

Condition Based Maintenance (CBM) has been the key aspect of keeping a system/component ready for use with optimal maintenance at significantly lower costs, whether it is for army use or commercial applications. Though commercial airplanes and helicopters, already follow CBM methodology, it is not used much in ground

vehicles. A team of researchers from the College of Engineering and Applied Sciences at Western Michigan University have been working on a CBM project that involves the structural and oil health monitoring for dual purpose vehicles. They have developed a new fatigue sensor that can be used for structural health monitoring in any application ranging from ground to air vehicles to bridges and turbines. It is a dedicated sensor with specifically designed strips and slots, that provides a change in resistance with increasing fatigue damage. One of the unique features of this sensor is that it monitors the fatigue damage and crack growth, even when placed away from a critical location. In terms of oil health monitoring, a new prototype sensor (Measurement Specialties, CA) is used to monitor the temperature, density, viscosity and dielectric constant. The variation of these properties over a period of use and their correlation provides accurate timing for oil changes rather than following a fixed periodic schedule, and is expected to significantly save in operational costs. Each sensor has a custom-developed wireless interface making an ad hoc deployment and data collection easier. These sensors were demonstrated on a dual-purpose vehicle at the Tank-Automotive Research Development and Engineering Center (TARDEC) site in Warren, MI recently. This research has been funded by a congressional earmark for the Center for Advanced Vehicle Design and Simulation (CAVIDS) and the sensors are developed for initial use in army vehicles in collaboration with TARDEC.



Student and Alumni Accolades

Western Michigan University's Student Institute of Transportation Engineers (ITE) Chapter, earned a 2nd place finish in the second annual ITE Great Lakes District Collegiate Traffic Bowl. The competition was a Jeopardy style tournament held on April 14th during the Great Lakes District Regional ITE conference in Columbus, OH. The Western Michigan team was comprised of Civil and Construction Engineering students **Chelsea Griffith, Corey Vincent, John Sendor** and **Omar Kanaan**. The faculty advisor was by **Dr. Jun-Seok Oh**. The competition was held in front of an audience comprised of ITE professional members, most notably Mr. Robert Wunderlich ITE International President, and Michigan, Indiana, and Ohio DOT directors. The ITE chapter team was well received and impressed the audience. Furthermore, their participation at the conference provided invaluable networking opportunities for the students, undergraduate and graduate alike. They were very proud to represent the preparedness and professionalism of WMU's engineering student body.



L-R: Corey Vincent, Chelsea Griffith, and John Sendor. Omar Kanaan not pictured.

The Formula Society of Automotive Engineers team devoted numerous hours above and beyond the regular class and study time, to design and build the FSAE Formula car named FX-11. The team that consists of freshman to graduate students, also did all of their own fundraising for the project. They received no academic credit for their efforts only the satisfaction at the end result and the desire to compete in one of the most prestigious annual collegiate automotive design events held. Several parents, faculty, staff, alumni, and students attended the unveiling where there were many comments on how great the car looked and the crowd was impressed by the fact that in testing, it showed that it is the fastest and best performing FSAE formula car yet. The FX-11 has pneumatic shifting that is a first this year, which takes time off shifting and makes for a smoother shifting function. WMU's SAE chapter took their newly

completed Formula car to the 2011 Formula SAE Series competition that was held at MIS May 11-14. The event was expected to attract more than 140 collegiate engineering teams and some 2,000 students. The results of the competition are not yet available to report.



Above back, L-R: Nick Loederman, Enesto Matos, David Hopwood, Matt Paiva, & Zach Tuyls. Front L-R: Devin Talcott, Jeremiah MacIntock, Alan Heinecke, Mike Nienhuis, & Kevin Thompson.

During the spring semester alone it took over 500 hrs each for **Cody Kammeraad** and **Alexander Buist** to design, build, and test WMU's first working hybrid hydrogen fuel cell power-trained vehicle. Starting with just the rolling chassis, they had to learn to use new software, weld, wire, and basically perform numerous processes that go into building a vehicle from the ground up. Alex and Cody presented their project at the CEAS Senior Design conference in April. Their faculty advisor was **Dr. Bade Shrestha**. Hydrogen fuel cells are an alternative energy source that could reduce the reliance on fossil fuels. Cody and Alex explained that a fuel cell consists of an anode, cathode, and a membrane (electrolyte). When hydrogen atoms enter the anode an electrochemical reaction occurs which separates the electrons from the hydrogen ions. The electrons are used to charge the batteries or provide current to the motor and when the ions reach the cathode it reacts with the oxygen in the air and produce water. The batteries used were out of a Toyota Prius that consisted of 28 modules that were separated into 4 packs with 7 modules and had a nominal voltage of 50.4 volts for each pack and when connected they obtained a capacity of 26 Ah. The hydrogen fuel cell used is a Ballard Nexa PEM power module capable of producing 1200 watts of output power. Using DC to DC converters a constant voltage output of 51 volts was achieved, when connected to the 4 battery packs and motor controller it provides power to the motor and/or charges the batteries. The vehicle can run with batteries only, fuel cell only, or with both. Alex and Cody hope that their power-train design is

Continued on next page

implemented into an SAE formula car in the near future for hybrid division competition.



L to R: Alexander Buist and Cody Kammeraad with the Hybrid Hydrogen Fuel Cell Power-Train vehicle they designed and built.

Five members of the Delta Michigan Chapter of Tau Alpha Pi, the national honor society for engineering technology, were inducted into the society at a formal ceremony on April 22, 2011. **Dr. Alamgir Choudhury** and **Dr. Sam Ramrattan**, faculty advisers for Tau Alpha Pi and faculty members in the Department of Industrial and Manufacturing Engineering (IME), introduced the new members: **Cody R. Boyne**, president; **Jian He**, vice president; **Nicholas Dixon**, secretary; **Michael E. Biro**; and **Brian Shea**. The formal ceremony was held in Bernhard Center and was attended by the **Dr. Paul Engelmann**, IME department chair; **Dr. Anthony Vizzini**, dean of College of Engineering and Applied Sciences; and several IME faculty members. The ceremony included a ritual of oath, awarding of certificates, and a dinner for all those in attendance. The Delta Michigan Chapter of Tau Alpha Pi was founded at Western Michigan University in 1993. The society recognizes the top 5% of an institutions student body. The purpose of the society is to recognize and inspire scholarly excellence, fine character traits, and leadership qualities. The society rewards selected scholars for past achievements and accomplishments, while encouraging a lifetime of commitment to learning and scholarship. Currently there are over 95 chapters of the society nationally.



Tau Alpha Pi advisers and inductees at a formal ceremony held last month. From left are Dr. Alamgir Choudhury, faculty adviser; Nicholas Dixon, secretary, Brian Shea; Jian He, vice president; Michael E. Biro; Cody R. Boyne, president; and Dr. Sam Ramrattan, adviser

Upcoming Events

Video Game Design Summer Camp, Build Your Own Video Game Week 1: August 1 - 5, Week 2: August 8 - 12
For the camp brochure visit: <http://www.wmich.edu/engineer/pdf/SummerCampVideoGame.pdf>

Summer Camp 2011, Design and Manufacturing. How Things are designed and made, July 11 - 15, 2011.
For the camp brochure visit: <http://www.wmich.edu/ime/camp/summercamp-brochure2011.pdf>

College of Arts and Sciences

Faculty and Staff Accolades

Priscilla Lambert, associate professor of political science, and her collaborator Druscilla Scribner (University of Wisconsin - Oshkosh), were named recipients of the 2011 Carrie Chapman Catt Prize for their research project on "Gender and Constitutions: A Politics of Difference vs. Equality." The prize is awarded by the Carrie Chapman Catt Center for Women and Politics at Iowa State University. The annual competition is designed to encourage and reward scholars embarking on significant research in the area of women and politics. Numerous proposals from a variety of academic disciplines are received each year. Proposals are blind-reviewed by a faculty committee. Lambert and Scribner have undertaken a cross-national analysis of 100 countries on the provisions and enforcement of gender equity in national constitutions. In addition, they are performing in-depth analyses of 15 countries in five world regions as well as close qualitative analyses of

Continued on next page

six key countries in southern Africa and South America. Their research is funded by a grant from the National Science Foundation. Professor Lambert is the third Catt Prize recipient from WMU's Department of Political Science. Professor Aparna Thomas of Cornell College won the award in 2003 while a doctoral student at WMU. Professor **Kevin Corder** won the award in 1999.



Sherine O'Bare, associate professor of Chemistry has been recognized by the Division of Materials Research (DMR) of the National Science Foundation. The Foundation recognizes faculty members who have demonstrated a combination of transformative research accomplishments and outstanding contributions toward mentoring and broadening participation of women, underrepresented minorities and/or people with disabilities. This recognition, called the American Competitiveness and Innovation (ACI) Fellowship, is based on recommendations from DMR Program Directors. ACI Fellows receive a monetary supplement to their current grants plus a two-year extension to a grant "for special creativity."

Student and Alumni Accolades

Three Western Michigan University students won a national case study competition for the second consecutive year, and WMU received the 2011 Program Excellence award for its Telecommunications and Information Management Program. Competing against teams of graduate students, the WMU contingent competed in the International Telecommunications Education and Research Association National Case Study Competition. The final round of the competition and public presentations were held during ITERA's ninth annual Conference on Telecommunications and Information Technology April 8-10 in Indianapolis. This is the second year in a row that WMU has won the case study award. In the final round this year, WMU faced teams from Ball State University, James Madison University and Murray State University. Team members include: **George Sesi**, a telecommunications and information technology (TIM) major; **Travis Ross**, a communication information systems major; **Hugo Martinez Rodriguez**, a TIM major, from Santiago,

Dominican Republic; **Dr. Pairin Katerattanakul**, associate professor of business information systems. **Tharyn Taylor**, a TIM major, presented a research paper at the conference. In addition to WMU students winning top honors, the University's TIM Program received a Program of Excellence Award for undergraduate education in the field of information technology management. The program is offered through the Department of Business Information Systems in the Haworth College of Business and the School of Communication in the College of Arts and Sciences. It is co-directed by **Dr. Pairin Katerattanakul**, associate professor of business information systems, and **Dr. Rick Gershon**, professor of communication.

The Ethics Center is pleased to announce the undergraduates who have been selected to represent WMU next fall in the Upper Midwest Regional qualifier for the APPE Ethics Bowl National Championship. Team members include **Kevin Barton**, a senior majoring in Film, Video & Media Studies in the School of Communication; and **Matilda Shaw**, a junior majoring in Food and Consumer Package Goods, who is on the School of Communication's forensics team. The other team members are **Emma Giffels**, a sophomore majoring in Biomedical Sciences, and **Joseph D. Walsh III**, a senior double majoring in Mathematics and Philosophy. Both Giffels and Walsh are Lee Honors College students.

The Graduate College at Western Michigan University awarded its Graduate Student Research and Travel Grants for up to \$1,000 to:

Amanda Austin	Psychology
Catherine Gayman	Psychology
* Patrick Harris	History
Megan Luchies	Geography
Mary Peet	Psychology
Andrea Blanka Szell	Geography
* David Terry	History
Thomas Veldman	Geography

Travel Grants (up to \$700)

Hassan Al-Momani	English
* Asma Ayyad	Physics
Yusuf Bilgic	Statistics
Kevin Douglass	Chemistry
Theresa Green	Interdisciplinary Health Sciences
Jesse Hysell	History
* Darshika Keerthisinghe	Physics

Continued on next page

Petra Kohler
Marisha Lecea
* **Lyudmyla Pustelnyk**
Katherine Rowbotham

Natalie Truba
Jessica Urschel
John-Mary Vianney

* **Lydia Walker**

* **Samanthi Wickramarachchi**

* *also awarded a supplemental international travel grant of up to \$600 funded by the Graduate Student Advisory Committee*

Biological Sciences
Political Science
Communication
Biological Sciences/
Science Education
Psychology
Psychology
Biological Sciences
Comparative Religion
Physics

Items of Academic Interest



MS Geosciences graduate student Andrew MacLeod is helping out the Core Kids with a "rocks have holes" demonstration at the Kalamazoo Gem and Mineral Show.

The Department of Geosciences' Core Kids program recently held a hands-on expo for elementary-school-age children at the Kalamazoo Gem and Mineral Show at the Kalamazoo County Fairgrounds. Faculty and graduate students of the department set up stations displaying: hand samples of rocks; a "rocks have holes" station with "natural resources" materials and posters; and a "sands of the world" (viewing sands through microscopes) and "sands, beaches and coastlines" (why geologists study sand and how - sieving to analyze grain size) activities. The event played host to more than 1000 students throughout the day.

Haenicke Institute for Global Education

Faculty and Staff Accolades

Thirty three WMU faculty recently received awards from the International Education Faculty Development Fund to support overseas travel for research or to attend international conferences to present research. More than \$20,000 was awarded in the spring 2011 semester from the IEFDF, which is funded jointly by the Office of the Provost and the Haenicke Institute for Global Education.

IEFDF grants are awarded twice each year; application deadlines for each academic year are November 1 and April 1 for travel and projects that occur within the following 12 months. The maximum award is \$1,200 and cannot exceed 50 percent of the total project budget.

Visit the Haenicke Institute website for more information and the application: <http://international.wmich.edu/content/view/1485/99>

RECIPIENT LIST

Professor: Department/College: Destination

Heather Addison: Communication: Greece

Betsy Aller: Engineering: Canada

Robert Anemone: Anthropology: England

Onur Arugaslan: Finance and Commercial Law: Spain

Upul Attanayake: Engineering: Sri Lanka

Blair Balden: Aviation: Germany

Lori Brown: Aviation: Hong Kong

John Cameron: PCI: Germany

Alamgir Choudhury: Engineering: Canada

Liang Dong: Engineering: China

Olivia Gabor-Pierce: Foreign Languages: Switzerland

Richard Gershon: Communication: Spain

Esther Gray: Education: Germany

Chanseng He: Geography: France

Tricia Hennessy: Art: Switzerland

John Holtzman: Anthropology: Sweden

Brian Horvitz: Education: Portugal

Andrew Kline: Engineering: Canada

Renata Knific: Music: China

Continued on next page

Tom Knific: Music: China

Stephen Malcolm: Biological Sciences: Tanzania

Lisa Minnick: English: United Kingdom

Natalio Ohanna: Spanish: Portugal and France

Kathleen Propp: Communication: Greece

Carl Ratner: Music: Germany & Czech Republic

Silvia Rossbach: Biological Sciences: Germany

Bade Shrestha: Engineering: United Kingdom

Vivan Steemers: Foreign Languages: France

Gwen Tarbox: English: Belgium

Patricia Villalobos: Art: El Salvador

Kristina Wirtz: Anthropology: Norway

Devrim Yaman: Finance & Commercial Law: Spain

Quji Zhu: Mathematics: Canada

Prism Newsletter

Editor-in-Chief:

Dr. Timothy Greene

Editors:

Amy Routhier
Megan Anderson
Katelyn Callahan

Production:

Sandy Wachowski, Husky Graphics

Accredited by The Higher Learning Commission
and a member of the North Central Association.

www.ncahigherlearningcommission.org

1(800) 621-7440