



Western Michigan University
ScholarWorks at WMU

Legacy Scout Tickets from Pure Oil Company

8-20-2021

**MGRRE_PureOilScoutTickets_Stelzriede,
John_5_21145006389000**

MGRRE
Western Michigan University

Follow this and additional works at: <https://scholarworks.wmich.edu/pure>



Part of the Geology Commons

WMU ScholarWorks Citation

MGRRE, "MGRRE_PureOilScoutTickets_Stelzriede, John_5_21145006389000" (2021). *Legacy Scout Tickets from Pure Oil Company*. 9551.
<https://scholarworks.wmich.edu/pure/9551>

This Document is brought to you for free and open access via ScholarWorks at WMU. It has been accepted for inclusion in Legacy Scout Tickets from Pure Oil Company by an authorized administrator of ScholarWorks at WMU. See the National Digital Catalogue - Science Base Catalogue for more collections submitted by MGRRE.



MGRRE_PureOilScoutTickets_Stelzriede, John_5_21145006389000

API 21145006389000

Permit Number None

Lease Name Stelzriede, John

Well Number 5

County Saginaw

Township 12N

Range 04E

Section 11

2021 DEQ or Pure co_name Sun Oil Company

Pure Number N58

Latitude 43.4581312

Longitude -83.9657404

THE PURE OIL COMPANY
LOCATION REPORT

No.

DATE

STATE COUNTY *Sag* DIST. *Sag* TWP. SEC. TOWN RANGE
 PREC. *J. Steltzriede*

WELL No. *5* (SERIAL No. *N58*) FARM ACRES *90*

NAME OF STREAM OR WATERS QUADRANGLE

OPERATOR *Sun Oil Co.* MAP

..... Feet from North Line of Farm

..... " " East " " "

200

..... " " South " " "

1200

..... " " West " " "

..... Feet from North Line of Section

..... " " East " " "

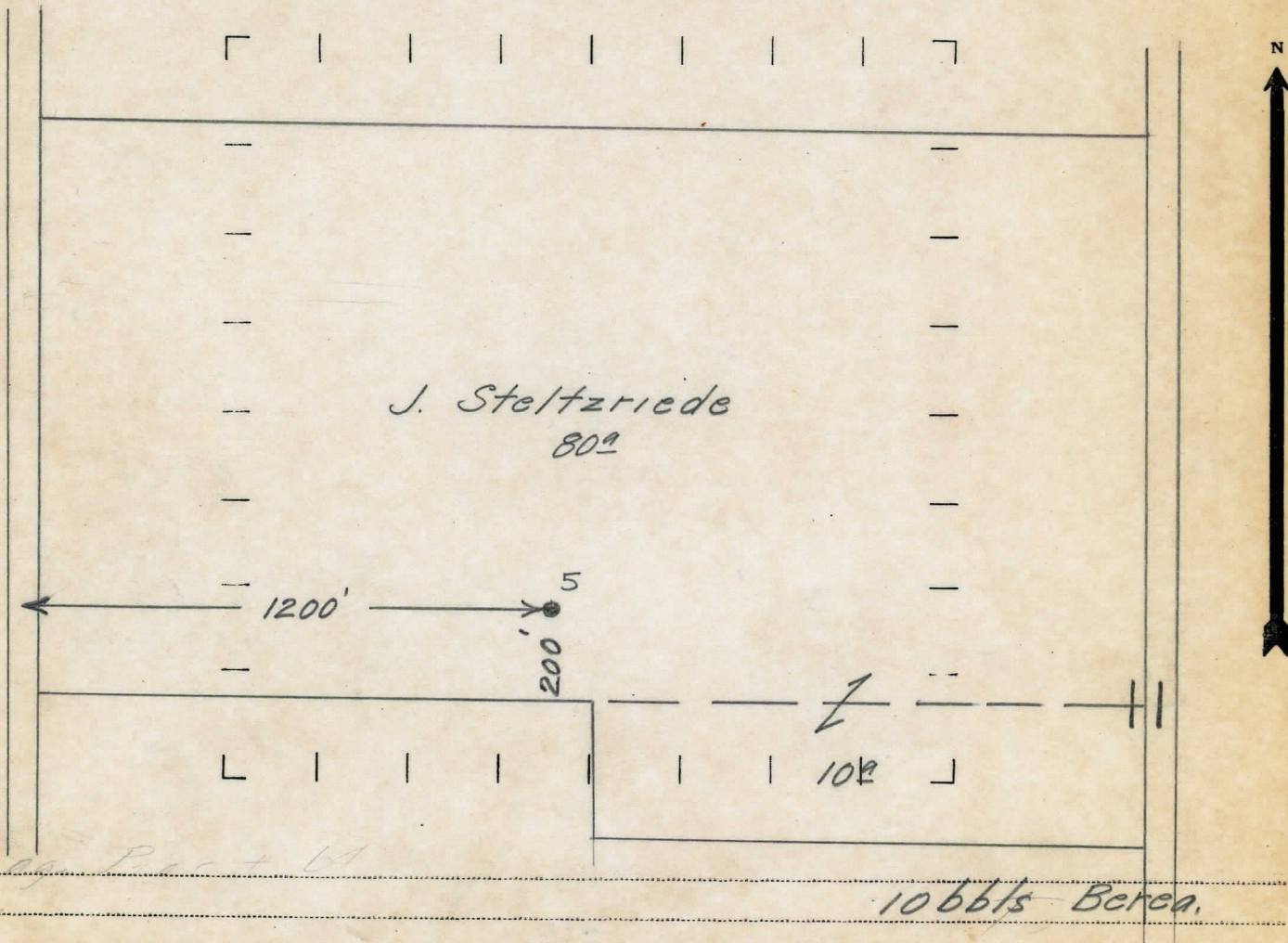
..... " " South " " "

..... " " West " " "

LEGEND

- LOCATION
- ⊙ RIG
- ⊕ DRILLING
- ⊗ GAS WELL
- OIL WELL
- ⊖ SMALL OIL WELL
- ⊗ DRY HOLE
- ⊕ DRY SHOWING OIL
- ⊗ DRY SHOWING GAS
- ⊖ ABANDONED LOCATION
- ⊗ ABANDONED GAS WELL
- ⊖ ABANDONED OIL WELL

NOTE: Below make tracing from map, (when no map is obtainable make sketch) showing farm, center of section, this location with measurements and also wells, dry holes, or other locations in the vicinity of this location. Make copy to keep for reference and send original to Chicago office.



REMARKS:

see page 64

10 bbls Berea.

SIGNED

Superintendent or Foreman.