



Western Michigan University
ScholarWorks at WMU

Legacy Scout Tickets from Pure Oil Company

8-20-2021

MGRRE_PureOilScoutTickets_Seymore_1_21145000559000

MGRRE

Western Michigan University

Follow this and additional works at: <https://scholarworks.wmich.edu/pure>



Part of the Geology Commons

WMU ScholarWorks Citation

MGRRE, "MGRRE_PureOilScoutTickets_Seymore_1_21145000559000" (2021). *Legacy Scout Tickets from Pure Oil Company*. 9561.

<https://scholarworks.wmich.edu/pure/9561>

This Document is brought to you for free and open access via ScholarWorks at WMU. It has been accepted for inclusion in Legacy Scout Tickets from Pure Oil Company by an authorized administrator of ScholarWorks at WMU. See the National Digital Catalogue - Science Base Catalogue for more collections submitted by MGRRE.



MGRRE_PureOilScoutTickets_Seymore_1_21145000559000

API 21145000559000

Permit Number None

Lease Name Seymore

Well Number 1

County Saginaw

Township 12N

Range 04E

Section 14

2021 DEQ or Pure co_name G and H Producers

Pure Number N68

Latitude 43.4405983

Longitude -83.9580101

THE PURE OIL COMPANY
LOCATION REPORT

No.

DATE

STATE COUNTY *Sag* DIST. *City of Sag* TWP. SEC. TOWN RANGE

WELL No. (SERIAL No. *N68*) FARM ACRES

NAME OF STREAM OR WATERS QUADRANGLE

OPERATOR *Fordney Pet Co.* MAP

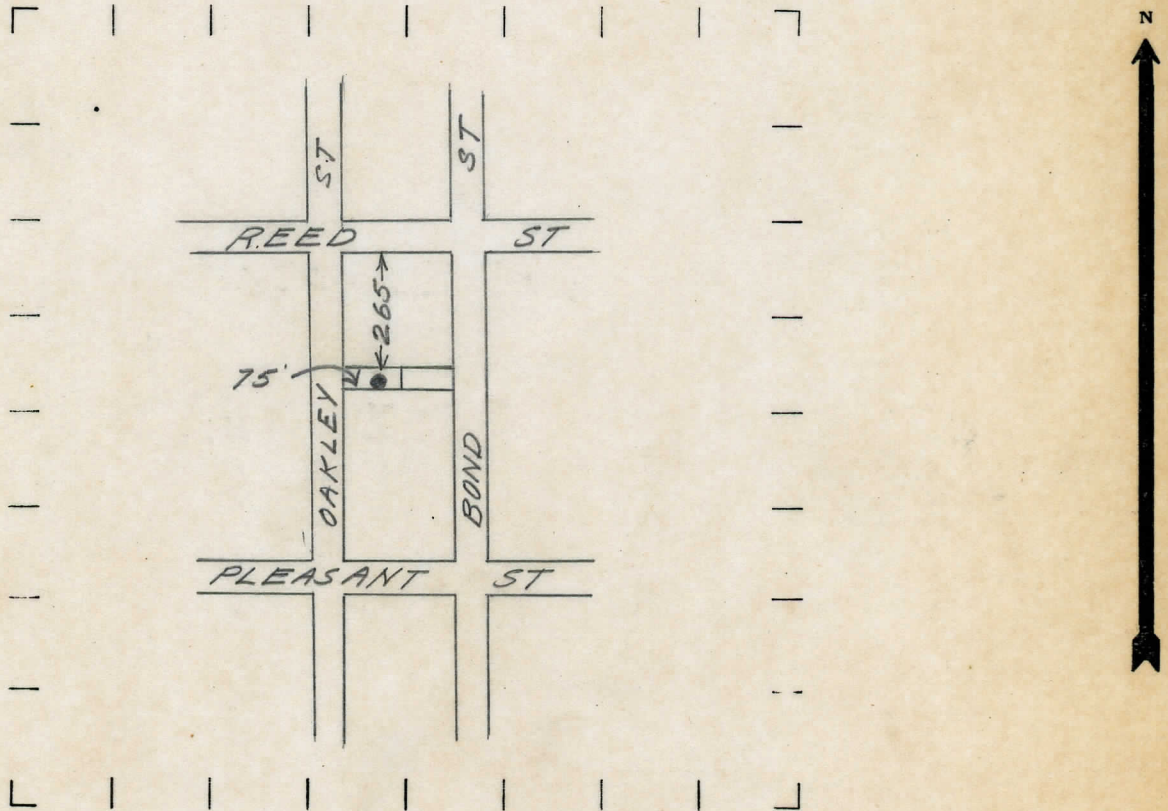
..... Feet from North Line of Farm
75 " " East " " " *Oakley*
265 " " South " " " *Reed St*
 " " West " " "

..... Feet from North Line of Section
 " " East " " "
 " " South " " "
 " " West " " "

LEGEND

- | | |
|------------------|----------------------|
| ○ LOCATION | ⊕ DRY HOLE |
| ① RIG | ⊕ DRY SHOWING OIL |
| ⊕ DRILLING | ⊕ DRY SHOWING GAS |
| ⊕ GAS WELL | ⊕ ABANDONED LOCATION |
| ● OIL WELL | ⊕ ABANDONED GAS WELL |
| ⊕ SMALL OIL WELL | ⊕ ABANDONED OIL WELL |

NOTE: Below make tracing from map, (when no map is obtainable make sketch) showing farm, center of section, this location with measurements and also wells, dry holes, or other locations in the vicinity of this location. Make copy to keep for reference and send original to Chicago office.



REMARKS:

.....

SIGNED

.....
 Superintendent or Foreman.