



Western Michigan University  
ScholarWorks at WMU

---

Legacy Scout Tickets from Pure Oil Company

---

8-20-2021

## MGRRE\_PureOilScoutTickets\_Pere Marquette RR Company\_4\_unk

MGRRE

*Western Michigan University*

Follow this and additional works at: <https://scholarworks.wmich.edu/pure>



Part of the Geology Commons

---

### WMU ScholarWorks Citation

MGRRE, "MGRRE\_PureOilScoutTickets\_Pere Marquette RR Company\_4\_unk" (2021). *Legacy Scout Tickets from Pure Oil Company*. 9568.

<https://scholarworks.wmich.edu/pure/9568>

This Document is brought to you for free and open access via ScholarWorks at WMU. It has been accepted for inclusion in Legacy Scout Tickets from Pure Oil Company by an authorized administrator of ScholarWorks at WMU. See the National Digital Catalogue - Science Base Catalogue for more collections submitted by MGRRE.



---

**MGRRE\_PureOilScoutTickets\_Pere Marquette RR Company\_4\_unk**

API unk

Permit Number unk

Lease Name Pere Marquette RR Company

Well Number 4

County Saginaw

Township 12N

Range 04E

2021 DEQ or Pure co\_name Sun Oil Company

Pure Number N75

Latitude 43.4368695

Longitude -83.9941229

THE PURE OIL COMPANY  
LOCATION REPORT

No.

DATE .....

STATE 4 COUNTY Sag DIST. City of Sag TWP. .... SEC. .... TOWN .... RANGE ....

WELL No. .... (SERIAL No. N75) FARM ..... ACRES .....

NAME OF STREAM OR WATERS The Sun Oil Co. QUADRANGLE .....

OPERATOR 200 MAP Genesee Av.

Feet from North Line of Farm

75 " " East " " "

" " South " " "

" " West " " "

Feet from North Line of Section

" " East " " "

" " South " " "

" " West " " "

**LEGEND**

○ LOCATION

① RIG

⊕ DRILLING

☼ GAS WELL

● OIL WELL

⊙ SMALL OIL WELL

⊖ DRY HOLE

⊕ DRY SHOWING OIL

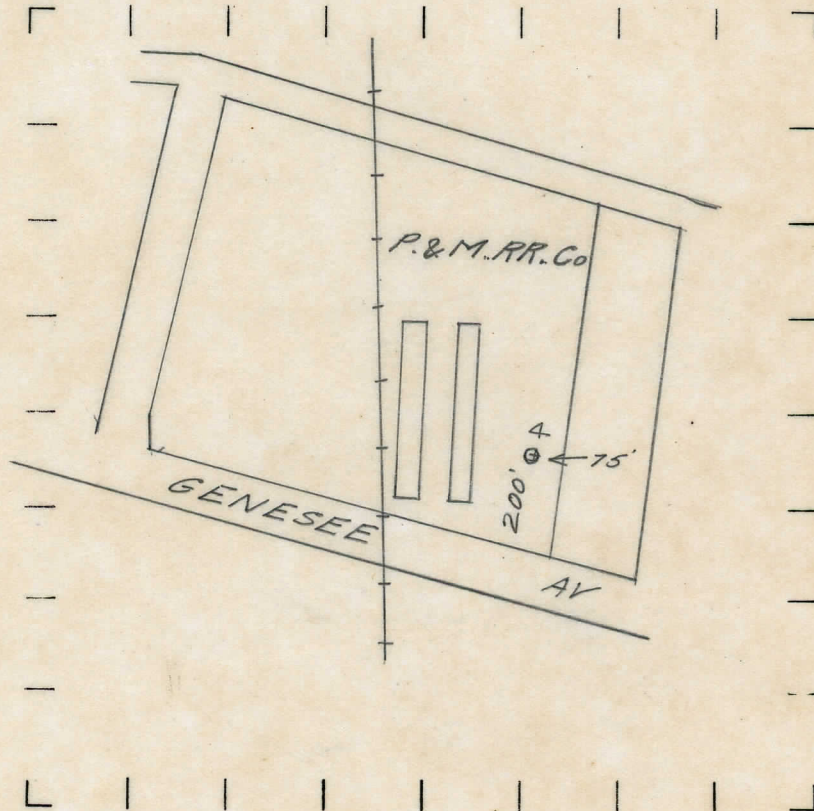
⊖ DRY SHOWING GAS

⊖ ABANDONED LOCATION

☼ ABANDONED GAS WELL

⊖ ABANDONED OIL WELL

NOTE: Below make tracing from map, (when no map is obtainable make sketch) showing farm, center of section, this location with measurements and also wells, dry holes, or other locations in the vicinity of this location. Make copy to keep for reference and send original to Chicago office.



REMARKS:

.....  
.....  
.....

SIGNED

Superintendent or Foreman.