



Western Michigan University  
ScholarWorks at WMU

---

Legacy Scout Tickets from Pure Oil Company

---

8-20-2021

MGRRE\_PureOilScoutTickets\_Durand well (Grand Trunk R. R. )\_1\_

MGRRE

*Western Michigan University*

Follow this and additional works at: <https://scholarworks.wmich.edu/pure>



Part of the Geology Commons

---

#### WMU ScholarWorks Citation

MGRRE, "MGRRE\_PureOilScoutTickets\_Durand well (Grand Trunk R. R. )\_1\_" (2021). *Legacy Scout Tickets from Pure Oil Company*. 9574.

<https://scholarworks.wmich.edu/pure/9574>

This Document is brought to you for free and open access via ScholarWorks at WMU. It has been accepted for inclusion in Legacy Scout Tickets from Pure Oil Company by an authorized administrator of ScholarWorks at WMU. See the National Digital Catalogue - Science Base Catalogue for more collections submitted by MGRRE.



---

**MGRRE\_PureOilScoutTickets\_Durand well (Grand Trunk R. R. )\_1\_**

**Lease Name** Durand well (Grand Trunk R. R. )

**Well Number** 1

**County** Shiawassee

**Township** 06N

**Range** 04E

**Section** 15

**2021 DEQ or Pure co\_name** unk

**Pure Number** 5

**Latitude** 42.9181573

**Longitude** -83.9782201

7-24-34

THE PURE OIL COMPANY

DATE 7-24-34

LOCATION REPORT

No. 5

STATE Michigan COUNTY Shiawassee DIST. TWP. Vernon SEC. 15 TOWN 6N RANGE 4E

WELL No. 1 (SERIAL No. 5) FARM Durand Well (Grand Trunk R. R.) ACRES

NAME OF STREAM OR WATERS QUADRANGLE SE-SW-SW

OPERATOR MAP Vernon Township, Shiawassee County

Vernon Twp - Shiawassee Co.

Feet from North Line of Farm

East

South

West

Feet from North Line of Section

East

South

West

300 300

990 990

LEGEND

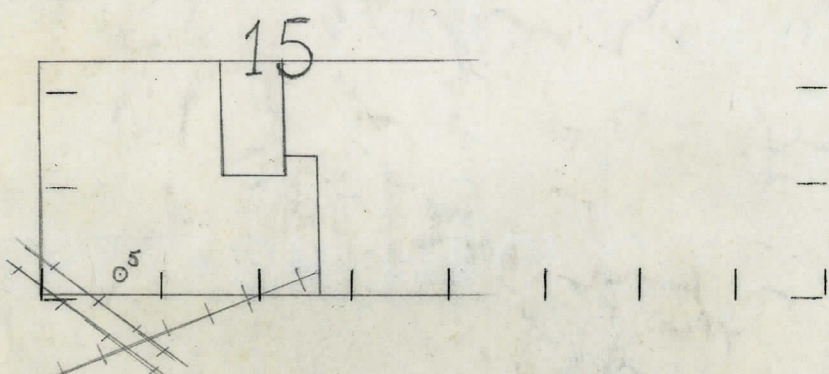
- LOCATION, RIG, DRILLING, GAS WELL, OIL WELL, SMALL OIL WELL, DRY HOLE, DRY SHOWING OIL, DRY SHOWING GAS, ABANDONED LOCATION, ABANDONED GAS WELL, ABANDONED OIL WELL

NOTE: Below make tracing from map, (when no map is obtainable make sketch) showing farm, center of section, this location with measurements and also wells, dry holes, or other locations in the vicinity of this location. Make copy to keep for reference and send original to Columbus office.

Drift 109'
Marshall 643'
Salt bearing Sandstone

Elevation 790'
Drift 109'
Marshall 643-648'
Salt-bearing Sandstone

Pub.#14 - Pp.167



REMARKS:

SIGNED

R. L. Yeager
Superintendent or Foreman.