



Western Michigan University
ScholarWorks at WMU

Legacy Scout Tickets from Pure Oil Company

8-20-2021

MGRRE_PureOilScoutTickets_Jailer, John W._1_21149062190000

MGRRE

Western Michigan University

Follow this and additional works at: <https://scholarworks.wmich.edu/pure>



Part of the Geology Commons

WMU ScholarWorks Citation

MGRRE, "MGRRE_PureOilScoutTickets_Jailer, John W._1_21149062190000" (2021). *Legacy Scout Tickets from Pure Oil Company*. 9617.

<https://scholarworks.wmich.edu/pure/9617>

This Document is brought to you for free and open access via ScholarWorks at WMU. It has been accepted for inclusion in Legacy Scout Tickets from Pure Oil Company by an authorized administrator of ScholarWorks at WMU. See the National Digital Catalogue - Science Base Catalogue for more collections submitted by MGRRE.



MGRRE_PureOilScoutTickets_Jailer, John W._1_21149062190000

API 21149062190000

Permit Number 6219

Lease Name Jailer, John W.

Well Number 1

County St. Joseph

Township 06S

Range 09W

Section 12

2021 DEQ or Pure co_name Hoyt, Andrew S., Agent

Pure Number 4

Latitude 41.96394

Longitude -85.294

THE PURE OIL COMPANY

DATE June 15, 1939Corrected

LOCATION REPORT

No. 4STATE Michigan

COUNTY

St. Joseph

DIST.

Colon

TWP.

Colon

SEC.

12

TOWN

6-S

RANGE

9WWELL No. 1(SERIAL No. 4)

FARM

PREC.

John W. Vailor

ACRES

NAME OF STREAM OR WATERS

QUADRANGLE SE SE NEOPERATOR A. J. Hoyt, et al

Map

Colon Township, St. Joseph CountyA. J. Hoyt, et alColon - St Joseph.

Feet from North Line of Farm

330 330

" " East " " "

330 330

" " South " " "

" " West " " "

Feet from North Line of Section

330 330

" " East " " "

330 330" " South 1/4 "

" " West " " "

LEGEND

O LOCATION

① RIG

⊕ DRILLING

☀ GAS WELL

● OIL WELL

⦿ SMALL OIL WELL

⊙ DRY HOLE

⦿ DRY SHOWING OIL

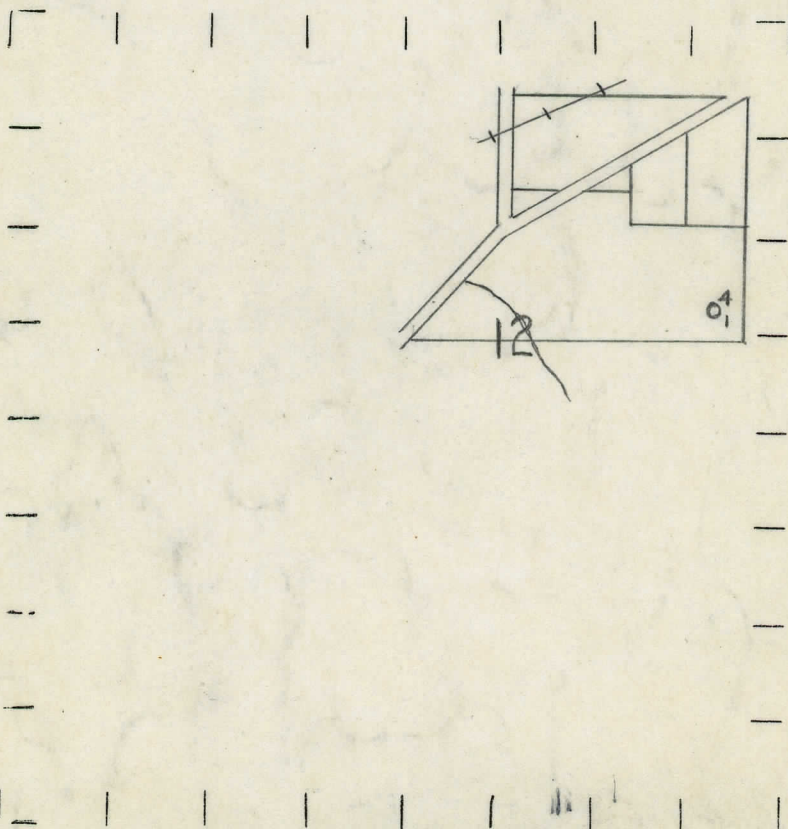
⊙ DRY SHOWING GAS

⊙ ABANDONED LOCATION

☀ ABANDONED GAS WELL

⦿ ABANDONED OIL WELL

NOTE: Below make tracing from map, (when no map is obtainable make sketch) showing farm, center of section, this location with measurements and also wells, dry holes, or other locations in the vicinity of this location.



N

REMARKS:

SIGNED

Superintendent or Foreman.

DATE May 25, 1939

LOCATION REPORT

No. 4

STATE Michigan COUNTY St. Joseph DIST. Colon SEC. 12 TOWN 6S RANGE 9W
WELL No. 1 (SERIAL No. #) FARM John W. Jailer ACRES

NAME OF STREAM OR WATERS _____ QUADRANGLE SE-SE-NE

OPERATOR A. J. Hoyt, et al Map Colon Township, St. Joseph County

A. J. Hoyt, et al.
Feet from North Line of Farm
330 330 " " East " " "
330 330 " " South " " "
" " West " " "

Feet from North Line of Section
330 330 " " East " " "
330 330 " " South " " "
" " West " " "

○ LOCATION

⊙ RIG

⊕ DRILLING

☀ GAS WELL

● OIL WELL

⬮ SMALL OIL WELL

LEGEND

⬮ DRY HOLE

⬮ DRY SHOWING OIL

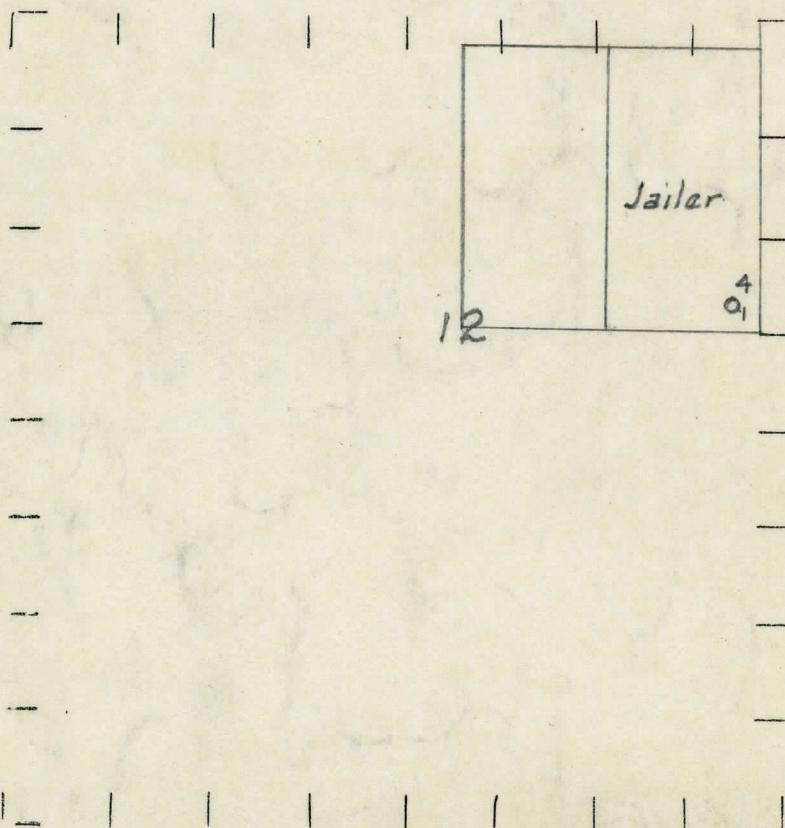
⬮ DRY SHOWING GAS

⬮ ABANDONED LOCATION

⬮ ABANDONED GAS WELL

⬮ ABANDONED OIL WELL

NOTE: Below make tracing from map, (when no map is obtainable make sketch) showing farm, center of section, this location with measurements and also wells, dry holes, or other locations in the vicinity of this location.



REMARKS:

SIGNED

Superintendent or Foreman.

FORMATION AND CASING RECORD

[illegible][illegible]

Signed **D. C. Shackelford**