



Western Michigan University
ScholarWorks at WMU

Cumulative Michigan COVID-19 Data

Michigan COVID-19 State Data

5-12-2020

2020-05-12_MichiganOverview_COVIDstats

Michigan Department of Health & Human Services

Follow this and additional works at: <https://scholarworks.wmich.edu/michigan-covid-data-state-cumulative>



Part of the Public Health Commons

WMU ScholarWorks Citation

Michigan Department of Health & Human Services, "2020-05-12_MichiganOverview_COVIDstats" (2020).
Cumulative Michigan COVID-19 Data. 82.

<https://scholarworks.wmich.edu/michigan-covid-data-state-cumulative/82>

This Website is brought to you for free and open access by the Michigan COVID-19 State Data at ScholarWorks at WMU. It has been accepted for inclusion in Cumulative Michigan COVID-19 Data by an authorized administrator of ScholarWorks at WMU. For more information, please contact wmu-scholarworks@wmich.edu.



Coronavirus

- CONTAIN ▾
- RESOURCES ▾
- PRESS RELEASES
- VOLUNTEER
- DONATE

VIDEO UPDATES

CORONAVIRUS / MICHIGAN DATA

Michigan Data

This information is updated daily at 3 p.m., with COVID-19 results included as of 10 a.m.

Note on deaths (05/12/20): Regular reviews of death certificate data maintained in Vital Records reporting systems are conducted by MDHHS staff three times per week. As a part of this process, records that identify COVID-19 infection as a contributing factor to death are compared against all laboratory confirmed cases of COVID-19 in the Michigan Disease Surveillance System (MDSS). If a death certificate is matched to a confirmed COVID-19 case and that record in the MDSS does not indicate the individual died, the MDSS record is updated to indicate the death and the appropriate local health department is notified. These matched deaths are then included with mortality information posted to the Michigan Coronavirus website. As a result of the most recent assessment, today's data includes **19** additional deaths identified by this methodology.

Confirmed COVID-19 Cases by Jurisdiction updated 5/12/2020

County	Confirmed Cases	Reported Deaths
Alcona	4	1
Allegan	161	2
Alpena	87	8
Antrim	10	
Arenac	28	1
Baraga	1	
Barry	52	1
Bay	214	10
Benzie	4	
Berrien	411	25
Branch	82	2
Calhoun	275	17
Cass	43	2
Charlevoix	13	1
Cheboygan	19	1
Chippewa	2	
Clare	12	2
Clinton	126	10
Crawford	57	4
Delta	14	2
Detroit City	9897	1213
Dickinson	5	2
Eaton	152	6
Emmet	21	2
Genesee	1782	225
Gladwin	18	1
Gogebic	4	1
Grand Traverse	21	5
Gratiot	33	4

• DAILY COUNTS

• LAB TESTING

• DATA ABOUT PLACES

• LONG TERM CARE FACILITIES

• CORONAVIRUS SYMPTOMS

Cumulative Total of Recovered COVID-19 Cases (as of
5/8/2020): **22,686**

Note on recovery: During this response, MDHHS is reviewing vital records statistics to identify any laboratory confirmed COVID-19 cases who are 30 days out from their onset of illness to represent recovery status. As the pandemic continues to impact Michigan, this pool will expand to include more cases. Recovered is defined as the number of persons with a confirmed COVID-19 diagnosis who are alive 30 days post-onset (or referral date if onset is not available). The number of persons recovered on May 8, 2020 represents COVID-19 confirmed individuals with an onset date on or prior to April 8, 2020. If an individual dies from a COVID-related cause >30 days from onset/referral, they are removed from the number of persons recovered. These numbers will be updated every Saturday.

Source: Michigan Disease Surveillance System and Vital Records

Age Data of Overall Deceased

Average Age	75.1 years
Median Age	76 years
Age Range	5-107 years

County	Confirmed Cases	Reported Deaths
Hillsdale	152	22
Houghton	2	
Huron	36	1
Ingham	594	17
Ionia	110	3
Iosco	55	8
Isabella	61	7
Jackson	401	26
Kalamazoo	636	36
Kalkaska	17	2
Kent	2416	45
Lake	2	
Lapeer	175	30
Leelanau	9	
Lenawee	129	2
Livingston	377	22
Luce	1	
Mackinac	6	
Macomb	6097	710
Manistee	11	
Marquette	51	10
Mason	23	
Mecosta	16	2
Menominee	6	
Midland	67	8
Missaukee	16	1
Monroe	399	18
Montcalm	47	1
Montmorency	5	
Muskegon	401	20
Newaygo	36	
Oakland	7784	872
Oceana	34	1
Ogemaw	15	
Osceola	9	
Oscoda	5	1
Otsego	98	10
Ottawa	430	20
Presque Isle	11	
Roscommon	20	
Saginaw	829	87
Sanilac	38	5
Schoolcraft	4	
Shiawassee	214	18
St Clair	366	28
St Joseph	71	1
Tuscola	162	17
Van Buren	94	4
Washtenaw	1206	82
Wayne	8377	927
Wexford	11	2
MDOC*	2144	55
FCJ**	114	3
Unknown	8	2
Out of State	75	
Grand Total	48021	4674

Overall Case Fatality Rate

Statewide Confirmed Cases	10%
---------------------------	-----

Cases by Sex

Sex	Percentage of Overall Cases by Sex	Percentage of Deceased Cases by Sex
Male	46%	53%
Female	53%	47%
Unknown	1%	<1%

Totals may not add to 100% due to rounding

Cases by Age

Age	Percentage of Overall Cases by Age	Percentage of Deceased Cases by Age
0 to 19	2%	<1%
20 to 29	11%	<1%
30 to 39	13%	1%
40 to 49	16%	3%
50 to 59	18%	8%
60 to 69	17%	18%
70 to 79	11%	27%
80+	11%	41%
Unknown	<1%	0%

Totals may not add to 100% due to rounding

Cases by Race

Race	Percentage of Overall Cases by Race	Percentage of Deceased Cases by Race
American Indian or Alaska Native	<1%	<1%
Asian/Pacific Islander	2%	1%
Black or African American	32%	41%
Caucasian	35%	49%
Multiple Races	8%	2%
Other	5%	2%
Unknown	18%	5%

Totals may not add to 100% due to rounding

Cases by Hispanic/Latino Ethnicity

Hispanic/Latino Ethnicity	Percentage of Overall Cases by Ethnicity	Percentage of Deceased Cases by Ethnicity
Hispanic/Latino	5%	2%
Non-Hispanic Latino	62%	80%
Unknown	33%	19%

Totals may not add to 100% due to rounding

*Michigan Department of Corrections

**Federal Correctional Institute*Michigan Department of Corrections

Note on cumulative counts: This report is provisional and subject to change. As public health investigations of individual cases continue, there will be corrections to the status and details of referred cases that result in changes to this report. *City of Detroit and Wayne County are reported separately*

Note on the deaths: Deaths must be reported by health care providers, medical examiners/coroners, and recorded by local health departments in order to be counted.

Note on jurisdictional classification: In order to provide more accurate data, the "Other" jurisdiction category will no longer be used. Michigan Department of Corrections cases will be listed under "MDOC". Federal Correctional Institution cases will be listed under "FCI".

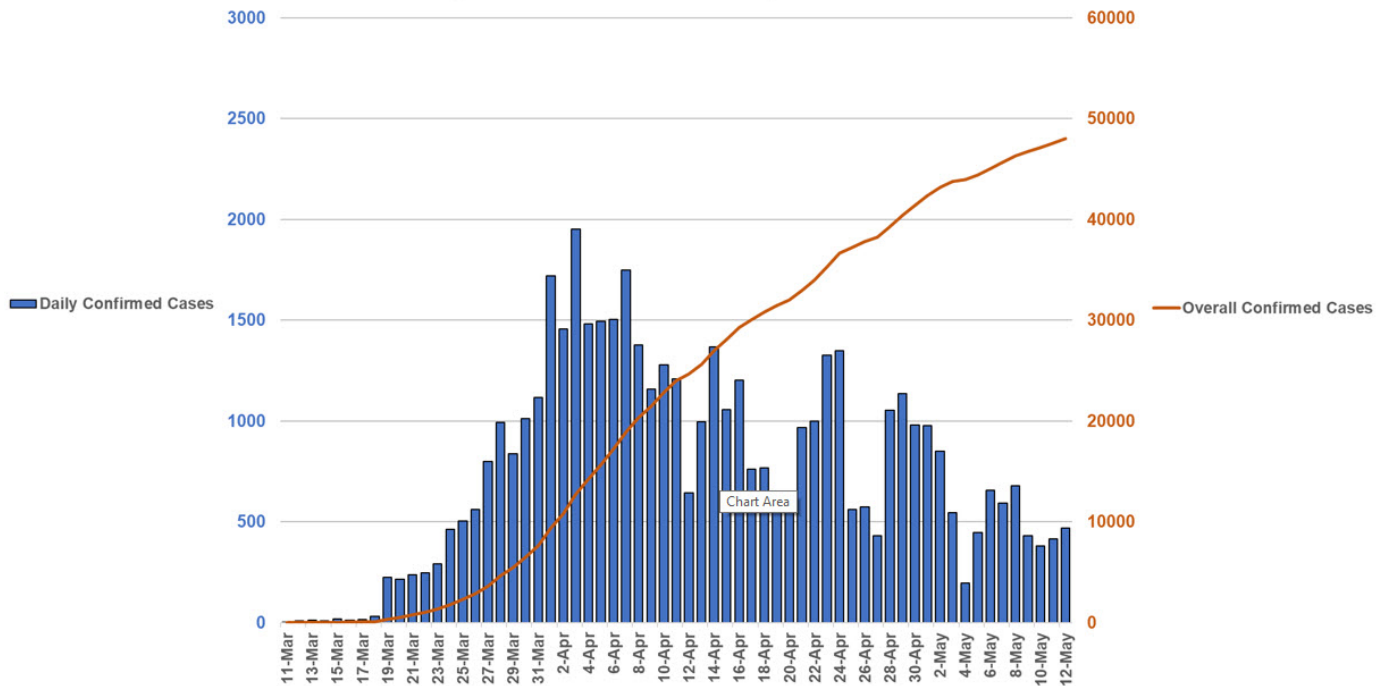
Note on Case Fatality Rate: The case fatality rate is the number of people who have died from causes associated with COVID-19 out of the total number of people with confirmed COVID-19 infections. It is used as one measure of illness severity. Several factors can affect this number. Until recently, COVID-19 lab testing has prioritized for hospitalized individuals due to limited testing availability. As a result, COVID-19 infections were identified more often in people who were more severely ill. This would lead to a higher case fatality rate. As more people with mild illness are tested, it is likely the case fatality rate will go down.


Cases by Arab Ethnicity

Arab Ethnicity	Percentage of Overall Cases by Ethnicity	Percentage of Deceased Cases by Ethnicity
Arab	2%	1%
Non-Arab	34%	34%
Unknown	64%	65%

Totals may not add to 100% due to rounding

Michigan COVID-19 Confirmed Case Epi-Curve and Cumulative Cases



 **Have questions?**
Chat with Robin



MICHIGAN.GOV HOME
ADA
MICHIGAN NEWS



Have questions?
Chat with Robin