



Western Michigan University  
ScholarWorks at WMU

---

Cumulative Michigan COVID-19 Data

Michigan COVID-19 State Data

---

5-16-2020

## 2020-05-16\_MichiganOverview\_COVIDstats

Michigan Department of Health & Human Services

Follow this and additional works at: <https://scholarworks.wmich.edu/michigan-covid-data-state-cumulative>



Part of the Public Health Commons

---

### WMU ScholarWorks Citation

Michigan Department of Health & Human Services, "2020-05-16\_MichiganOverview\_COVIDstats" (2020).  
*Cumulative Michigan COVID-19 Data*. 78.

<https://scholarworks.wmich.edu/michigan-covid-data-state-cumulative/78>

This Website is brought to you for free and open access by the Michigan COVID-19 State Data at ScholarWorks at WMU. It has been accepted for inclusion in Cumulative Michigan COVID-19 Data by an authorized administrator of ScholarWorks at WMU. For more information, please contact [wmu-scholarworks@wmich.edu](mailto:wmu-scholarworks@wmich.edu).



# Coronavirus

- CONTAIN ▾
- RESOURCES ▾
- PRESS RELEASES
- VOLUNTEER
- DONATE

VIDEO UPDATES

CORONAVIRUS / MICHIGAN DATA

## Michigan Data

This information is updated daily at 3 p.m., with COVID-19 results included as of 10 a.m.

**\*Note on deaths (05/16/20):** Regular reviews of death certificate data maintained in Vital Records reporting systems are conducted by MDHHS staff three times per week. As a part of this process, records that identify COVID-19 infection as a contributing factor to death are compared against all laboratory confirmed cases of COVID-19 in the Michigan Disease Surveillance System (MDSS). If a death certificate is matched to a confirmed COVID-19 case and that record in the MDSS does not indicate the individual died, the MDSS record is updated to indicate the death and the appropriate local health department is notified. These matched deaths are then included with mortality information posted to the Michigan Coronavirus website. As a result of the most recent assessment, today's data includes 19 additional deaths identified by this methodology.

### Confirmed COVID-19 Cases by Jurisdiction updated 5/16/2020

County	Confirmed Cases	Reported Deaths
Alcona	6	1
Allegan	174	2
Alpena	91	9
Antrim	11	
Arenac	30	1
Baraga	1	
Barry	56	1
Bay	234	15
Benzie	4	
Berrien	500	28
Branch	95	2
Calhoun	295	18
Cass	53	2
Charlevoix	14	1
Cheboygan	19	1
Chippewa	3	
Clare	14	2
Clinton	132	10
Crawford	57	4
Delta	14	2
Detroit City	10327	1255
Dickinson	5	2
Eaton	162	6
Emmet	21	2
Genesee	1845	230
Gladwin	17	1
Gogebic	4	1
Grand Traverse	23	5
Gratiot	42	4

### • DAILY COUNTS

### • LAB TESTING

### • DATA ABOUT PLACES

### • LONG TERM CARE FACILITIES

### • CORONAVIRUS SYMPTOMS

Cumulative Total of Recovered COVID-19 Cases (as of 5/15/2020): **28,234**

**Note on recovery:** During this response, MDHHS is reviewing vital records statistics to identify any laboratory confirmed COVID-19 cases who are 30 days out from their onset of illness to represent recovery status. As the pandemic continues to impact Michigan, this pool will expand to include more cases. Recovered is defined as the number of persons with a confirmed COVID-19 diagnosis who are alive 30 days post-onset (or referral date if onset is not available). The number of persons recovered on May 15, 2020 represents COVID-19 confirmed individuals with an onset date on or prior to April 15, 2020. ~~X~~ If an individual dies from a COVID-related cause >30 days from onset/referral, they are removed from the number of persons recovered. These numbers will be updated every Saturday.

**Source:** Michigan Disease Surveillance System and Vital Records

### Age Data of Overall Deceased

Average Age	75.3 years
Median Age	77 years
Age Range	5-107 years

County	Confirmed Cases	Reported Deaths
Hillsdale	166	23
Houghton	2	
Huron	41	1
Ingham	643	21
Ionia	118	3
Iosco	58	8
Isabella	62	7
Jackson	414	26
Kalamazoo	708	42
Kalkaska	17	2
Kent	2766	54
Lake	3	
Lapeer	180	30
Leelanau	10	
Lenawee	134	3
Livingston	383	25
Luce	2	
Mackinac	6	
Macomb	6304	739
Manistee	11	
Marquette	52	10
Mason	25	
Mecosta	19	2
Menominee	8	
Midland	70	8
Missaukee	16	1
Monroe	420	18
Montcalm	53	1
Montmorency	5	
Muskegon	468	23
Newaygo	41	
Oakland	8023	910
Oceana	47	2
Ogemaw	17	
Osceola	9	
Oscoda	5	1
Otsego	99	10
Ottawa	518	24
Presque Isle	11	
Roscommon	21	
Saginaw	903	97
Sanilac	38	5
Schoolcraft	4	
Shiawassee	223	19
St Clair	408	30
St Joseph	84	1
Tuscola	165	18
Van Buren	110	5
Washtenaw	1241	88
Wayne	8689	957
Wexford	11	2
MDOC*	2216	56
FCJ**	116	3
Unknown	4	
Out of State	88	
Grand Total	50504	4880

## Overall Case Fatality Rate

Statewide Confirmed Cases	10%
---------------------------	-----

## Cases by Sex

Sex	Percentage of Overall Cases by Sex	Percentage of Deceased Cases by Sex
Male	46%	53%
Female	53%	47%
Unknown	1%	<1%

*Totals may not add to 100% due to rounding*

## Cases by Age

Age	Percentage of Overall Cases by Age	Percentage of Deceased Cases by Age
0 to 19	3%	<1%
20 to 29	11%	<1%
30 to 39	13%	1%
40 to 49	16%	3%
50 to 59	18%	8%
60 to 69	16%	18%
70 to 79	11%	27%
80+	11%	42%
Unknown	<1%	0%

*Totals may not add to 100% due to rounding*

## Cases by Race

Race	Percentage of Overall Cases by Race	Percentage of Deceased Cases by Race
American Indian or Alaska Native	<1%	<1%
Asian/Pacific Islander	2%	1%
Black or African American	32%	40%
Caucasian	36%	50%
Multiple Races	8%	2%
Other	5%	2%
Unknown	17%	5%

*Totals may not add to 100% due to rounding*

## Cases by Hispanic/Latino Ethnicity

Hispanic/Latino Ethnicity	Percentage of Overall Cases by Ethnicity	Percentage of Deceased Cases by Ethnicity
Hispanic/Latino	6%	2%
Non-Hispanic Latino	63%	80%
Unknown	31%	18%

*Totals may not add to 100% due to rounding*

\*Michigan Department of Corrections

\*\*Federal Correctional Institute\*Michigan Department of Corrections

**Note on cumulative counts:** This report is provisional and subject to change. As public health investigations of individual cases continue, there will be corrections to the status and details of referred cases that result in changes to this report. *City of Detroit and Wayne County are reported separately*

**Note on the deaths:** Deaths must be reported by health care providers, medical examiners/coroners, and recorded by local health departments in order to be counted.

**Note on jurisdictional classification:** In order to provide more accurate data, the "Other" jurisdiction category will no longer be used. Michigan Department of Corrections cases will be listed under "MDOC". Federal Correctional Institution cases will be listed under "FCI".

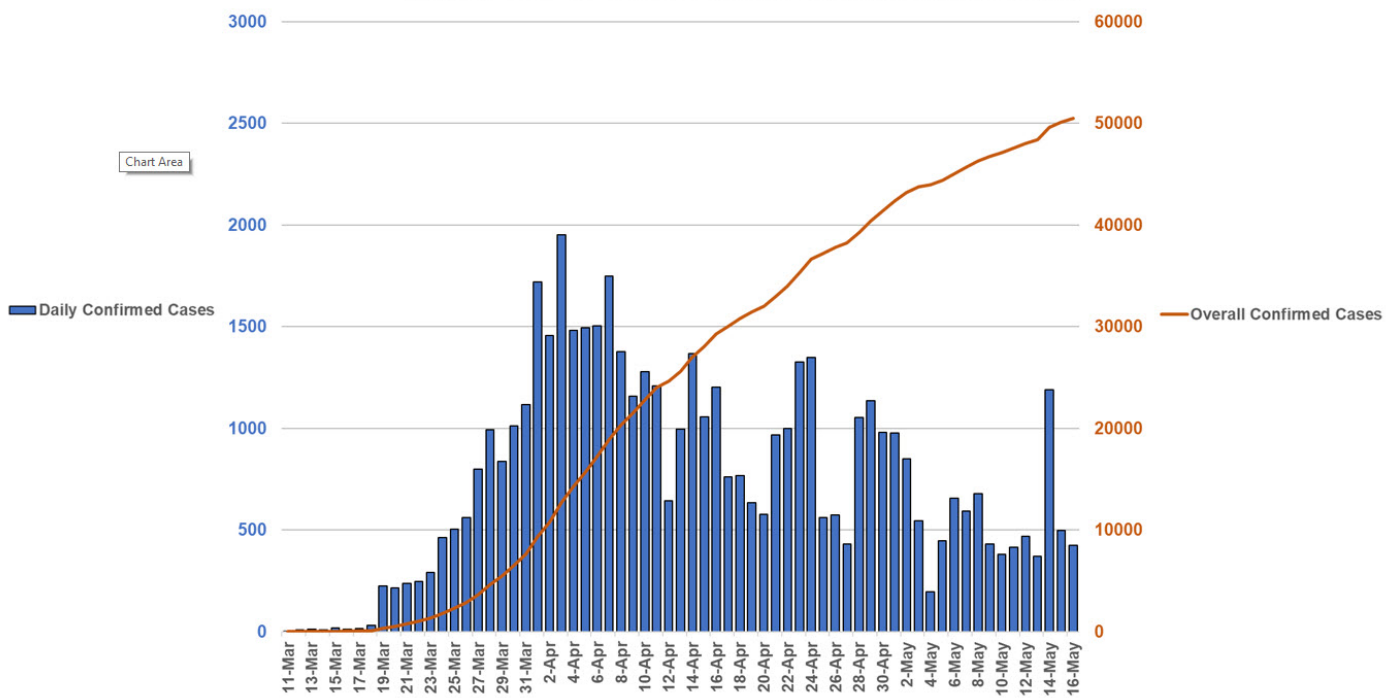
**Note on Case Fatality Rate:** The case fatality rate is the number of people who have died from causes associated with COVID-19 out of the total number of people with confirmed COVID-19 infections. It is used as one measure of illness severity. Several factors can affect this number. Until recently, COVID-19 lab testing has prioritized for hospitalized individuals due to limited testing availability. As a result, COVID-19 infections were identified more often in people who were more severely ill. This would lead to a higher case fatality rate. As more people with mild illness are tested, it is likely the case fatality rate will go down.


**Cases by Arab Ethnicity**

Arab Ethnicity	Percentage of Overall Cases by Ethnicity	Percentage of Deceased Cases by Ethnicity
Arab	2%	1%
Non-Arab	35%	37%
Unknown	63%	62%

*Totals may not add to 100% due to rounding*

Michigan COVID-19 Confirmed Case Epi-Curve and Cumulative Cases



 **Have questions?**  
Chat with Robin



**MICHIGAN.GOV HOME**  
**ADA**

**MICHIGAN NEWS  
POLICIES**

**COPYRIGHT 2020 STATE OF MICHIGAN**



**Have questions?**  
Chat with Robin