



Western Michigan University
ScholarWorks at WMU

Legacy Scout Tickets from Pure Oil Company

8-20-2021

MGRRE_PureOilScoutTickets_BARRIE, A._1_21011038750000

MGRRE

Western Michigan University

Follow this and additional works at: <https://scholarworks.wmich.edu/pure>



Part of the Geology Commons

WMU ScholarWorks Citation

MGRRE, "MGRRE_PureOilScoutTickets_BARRIE, A._1_21011038750000" (2021). *Legacy Scout Tickets from Pure Oil Company*. 68.

<https://scholarworks.wmich.edu/pure/68>

This Document is brought to you for free and open access via ScholarWorks at WMU. It has been accepted for inclusion in Legacy Scout Tickets from Pure Oil Company by an authorized administrator of ScholarWorks at WMU. See the National Digital Catalogue - Science Base Catalogue for more collections submitted by MGRRE.



MGRRE_PureOilScoutTickets_BARRIE, A._1_21011038750000

API 21011038750000

Permit Number 3875

Lease Name BARRIE, A.

Well Number 1

County Arenac

Township 20N

Range 4E

Section 9

2021 DEQ or Pure co_name HAL BE OYLE AND GAS CORP

Pure Number 73

Latitude 44.14809

Longitude -83.98856

THE PURE OIL COMPANY

LOCATION REPORT

Date Nov. 27, 1942 A.F.E. No. _____

Division Mich. Producing District _____ Lease A. Barrie

Acres _____ Lease No. _____ Elevation _____ Well No. 1 (Serial No. 73)

Quadrangle NE NE SE Sec. 9 Twp. 20 N Rge. 4 E Twp. Clayton

Survey _____ County Arenac State Michigan

Operator Hal-Be-Oyle & Gas Corporation Map Clayton Township, Arenac County

Feet from North Line of Lease

" " East " " "

" " South " " "

" " West " " "

Feet from North Line of Section

" " East " " "

" " South " " "

" " West " " "

LEGEND

○ Location

☀ Gas Well

● Oil Well

☀ Gas - Distillate Well

○ or ○ Dry Hole

● Dry Showing Oil

☀ Dry Showing Gas

⊗ Abandoned Location

☀ or ☀ Abandoned Gas Well

● or ● Abandoned Oil Well

● or ○ Input Well

Plugged and abandoned 1014-42.

Total Depth 2620'.

N

Scale _____

Remarks: _____

Submitted by _____ Civil Engineer

Approved by _____

Division Manager

Approved by _____

Vice-President - General Manager

Date

NOV 55 1935

LOCATION REPORT

V.E.E. No.

DATE February 18, 1937

LOCATION REPORT

No. 73

STATE Michigan COUNTY Arenac DIST. Clayton TWP. Clayton SEC. 9 TOWN 20 N RANGE 4 E
 WELL No. 1 (SERIAL No. 73) FARM A. Barrie ACRES

NAME OF STREAM OR WATERS

QUADRANGLE

NE-NE-SE
NE NE SE

OPERATOR Hal-Be-Oyle & Gas Corporation

Map

Clayton Township, Arenac County

Hal-Be-Oyle & Gas Corp.

Clayton-Arenac

Feet from North Line of Farm

Sp 2-16-37

LEGEND

330 330

" " East " " "

330 330

" " South " " "

330 330

Feet from North Line of Section 1/4

330 330

" " East " " "

" " South " " "

" " West " " "

O LOCATION

① RIG

⊕ DRILLING

☼ GAS WELL

● OIL WELL

⬮ SMALL OIL WELL

⊙ DRY HOLE

⬮ DRY SHOWING OIL

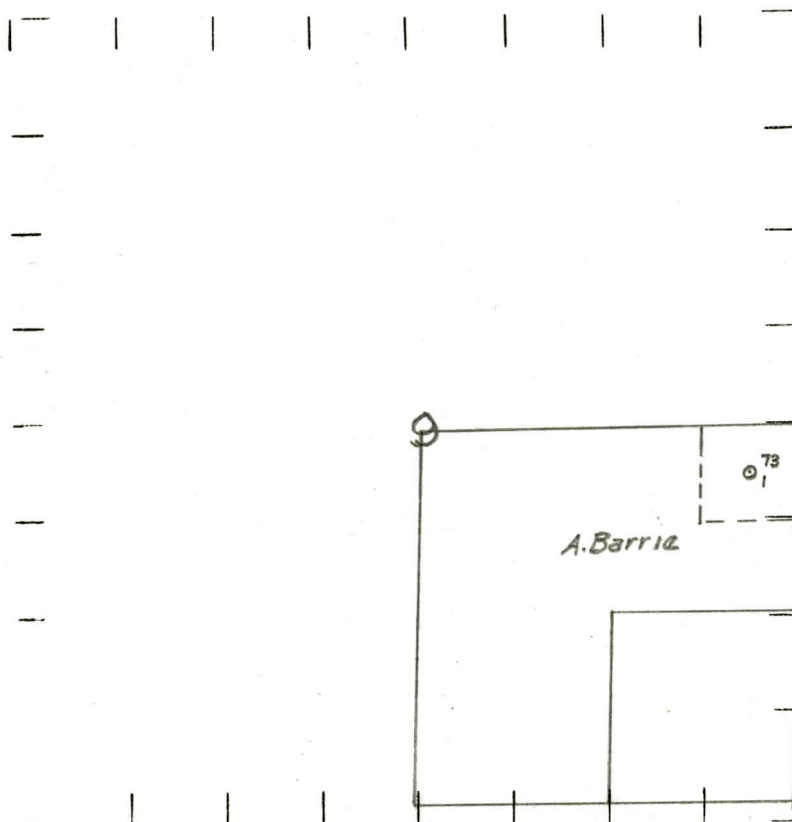
⊙ DRY SHOWING GAS

⊙ ABANDONED LOCATION

☼ ABANDONED GAS WELL

⬮ ABANDONED OIL WELL

NOTE: Below make tracing from map, (when no map is obtainable make sketch) showing farm, center of section, this location with measurements and also wells, dry holes, or other locations in the vicinity of this location.



REMARKS:

SIGNED

R.L. Yeager

Superintendent or Foreman

Michigan Producing Division

Date **July 22, 1937** No. **73**
 State **Michigan** County **Arenac** Dist. **Clayton** Sec. **9** Twp. **20 N** Rge. **4 E**
 Well No. **1** (Serial No.) (County No.) **73** Farm **A. Barrie** Acres
 Operator **Hai-De-Oyle & Gas Corporation** by **Scouting Department**
 Date well started **2-16-37** Date well completed **7-9-37** Elevation **907.8**

PRODUCTION RECORD

1st 24 hours natural **Filled up 400 feet**

2nd 24 hours natural

Date of shot No. of quarts From to From to
 Date of acid **7-10-37 and 7-14-37** No. of gallons **2400**
 1st 24 hours after acid **100 barrels**
 shot
 2nd 24 hours after acid

FORMATION AND CASING RECORD

Formation	Top	Bottom	Top Pay	Bottom Pay	Remarks	Casing	
						Size	Set to
Sunbury	1101	1132				10"	600
Berea	1132			1140	Show gas	8 1/2"	1248
Antrim	1295 ?					6-5/8"	2150
Traverse	1655			1660	H.P.S.W.	8-3/16"	2420
Dundee	2428	S.L.M.		2430	Smell oil		
			2529	2532			
			2594	2597			
Total Depth		2620					

Remarks

Signed **D. C. Shackelford**