



Western Michigan University
ScholarWorks at WMU

Cumulative Michigan COVID-19 Data

Michigan COVID-19 State Data

5-17-2020

2020-05-17_MichiganOverview_COVIDbedPPE

Michigan Department of Health & Human Services

Follow this and additional works at: <https://scholarworks.wmich.edu/michigan-covid-data-state-cumulative>



Part of the Public Health Commons

WMU ScholarWorks Citation

Michigan Department of Health & Human Services, "2020-05-17_MichiganOverview_COVIDbedPPE" (2020). *Cumulative Michigan COVID-19 Data*. 77.

<https://scholarworks.wmich.edu/michigan-covid-data-state-cumulative/77>

This Website is brought to you for free and open access by the Michigan COVID-19 State Data at ScholarWorks at WMU. It has been accepted for inclusion in Cumulative Michigan COVID-19 Data by an authorized administrator of ScholarWorks at WMU. For more information, please contact wmu-scholarworks@wmich.edu.



Coronavirus

- CONTAIN ▾
- RESOURCES ▾
- PRESS RELEASES
- VOLUNTEER
- DONATE

VIDEO UPDATES

CORONAVIRUS / MICHIGAN DATA

Michigan Data

This information is updated daily at 3 p.m., with COVID-19 results included as of 10 a.m.

Confirmed COVID-19 Cases by Jurisdiction updated 5/17/2020

County	Confirmed Cases	Reported Deaths
Alcona	6	1
Allegan	179	2
Alpena	91	9
Antrim	11	
Arenac	30	1
Baraga	1	
Barry	56	1
Bay	241	15
Benzie	4	
Berrien	522	29
Branch	95	2
Calhoun	301	18
Cass	59	2
Charlevoix	14	1
Cheboygan	19	1
Chippewa	2	
Clare	14	2
Clinton	134	10
Crawford	57	4
Delta	14	2
Detroit City	10348	1255
Dickinson	5	2
Eaton	163	6
Emmet	21	2
Genesee	1866	230
Gladwin	17	1
Gogebic	5	1
Grand Traverse	23	5
Gratiot	42	4
Hillsdale	166	23
Houghton	2	
Huron	44	1
Ingham	648	22
Ionia	119	3
Iosco	58	8
Isabella	62	7
Jackson	415	26
Kalamazoo	707	42
Kalkaska	17	2
Kent	2825	55
Lake	3	
Lapeer	180	30

• DAILY COUNTS

• LAB TESTING

• DATA ABOUT PLACES

• LONG TERM CARE FACILITIES

• CORONAVIRUS SYMPTOMS

Cumulative Total of Recovered COVID-19 Cases (as of 5/15/2020): **28,234**

Note on recovery: During this response, MDHHS is reviewing vital records statistics to identify any laboratory confirmed COVID-19 cases who are 30 days out from their onset of illness to represent recovery status. As the pandemic continues to impact Michigan, this pool will expand to include more cases. Recovered is defined as the number of persons with a confirmed COVID-19 diagnosis who are alive 30 days post-onset (or referral date if onset is not available). The number of persons recovered on May 15, 2020 represents COVID-19 confirmed individuals with an onset date on or prior to April 15, 2020. **X** If an individual dies from a COVID-related cause >30 days from onset/referral, they are removed from the number of persons recovered. These numbers will be updated every Saturday.

Source: Michigan Disease Surveillance System and Vital Records

Age Data of Overall Deceased

Average Age	75.3 years
Median Age	77 years
Age Range	5-107 years

County	Confirmed Cases	Reported Deaths
Leelanau	10	
Lenawee	136	3
Livingston	385	25
Luce	2	
Mackinac	6	
Macomb	6345	740
Manistee	11	
Marquette	52	10
Mason	26	
Mecosta	18	2
Menominee	8	
Midland	70	8
Missaukee	16	1
Monroe	429	18
Montcalm	53	1
Montmorency	5	
Muskegon	486	24
Newaygo	43	
Oakland	8043	912
Oceana	50	2
Ogemaw	17	
Osceola	10	
Oscoda	5	1
Otsego	99	10
Ottawa	531	24
Presque Isle	11	
Roscommon	21	
Saginaw	913	97
Sanilac	39	5
Schoolcraft	4	
Shiawassee	225	20
St Clair	403	31
St Joseph	86	1
Tuscola	170	18
Van Buren	112	5
Washtenaw	1242	88
Wayne	8717	958
Wexford	11	2
MDOC*	2538	57
FCI**	117	3
Unknown	3	
Out of State	88	
Grand Total	51142	4891

*Michigan Department of Corrections

**Federal Correctional Institute*Michigan Department of Corrections

Note on cumulative counts: This report is provisional and subject to change. As public health investigations of individual cases continue, there will be corrections to the status and details of referred cases that result in changes to this report. *City of Detroit and Wayne County are reported separately*

Note on the deaths: Deaths must be reported by health care providers, medical examiners/coroners, and recorded by local health departments in order to be counted.

Overall Case Fatality Rate

Statewide Confirmed Cases	10%
---------------------------	-----

Cases by Sex

Sex	Percentage of Overall Cases by Sex	Percentage of Deceased Cases by Sex
Male	47%	53%
Female	53%	47%
Unknown	<1%	<1%

Totals may not add to 100% due to rounding

Cases by Age

Age	Percentage of Overall Cases by Age	Percentage of Deceased Cases by Age
0 to 19	3%	<1%
20 to 29	11%	<1%
30 to 39	13%	1%
40 to 49	16%	3%
50 to 59	18%	8%
60 to 69	16%	18%
70 to 79	11%	27%
80+	11%	42%
Unknown	<1%	0%

Totals may not add to 100% due to rounding

Cases by Race

Race	Percentage of Overall Cases by Race	Percentage of Deceased Cases by Race
American Indian or Alaska Native	<1%	<1%
Asian/Pacific Islander	2%	1%
Black or African American	31%	40%
Caucasian	36%	50%
Multiple Races	8%	2%
Other	5%	2%
Unknown	18%	4%

Totals may not add to 100% due to rounding

Cases by Hispanic/Latino Ethnicity

Hispanic/Latino Ethnicity	Percentage of Overall Cases by Ethnicity	Percentage of Deceased Cases by Ethnicity
Hispanic/Latino	6%	2%
Non-Hispanic Latino	63%	80%
Unknown	31%	18%

Totals may not add to 100% due to rounding

Note on jurisdictional classification: In order to provide more accurate data, the "Other" jurisdiction category will no longer be used. Michigan Department of Corrections cases will be listed under "MDOC". Federal Correctional Institution cases will be listed under "FCI".

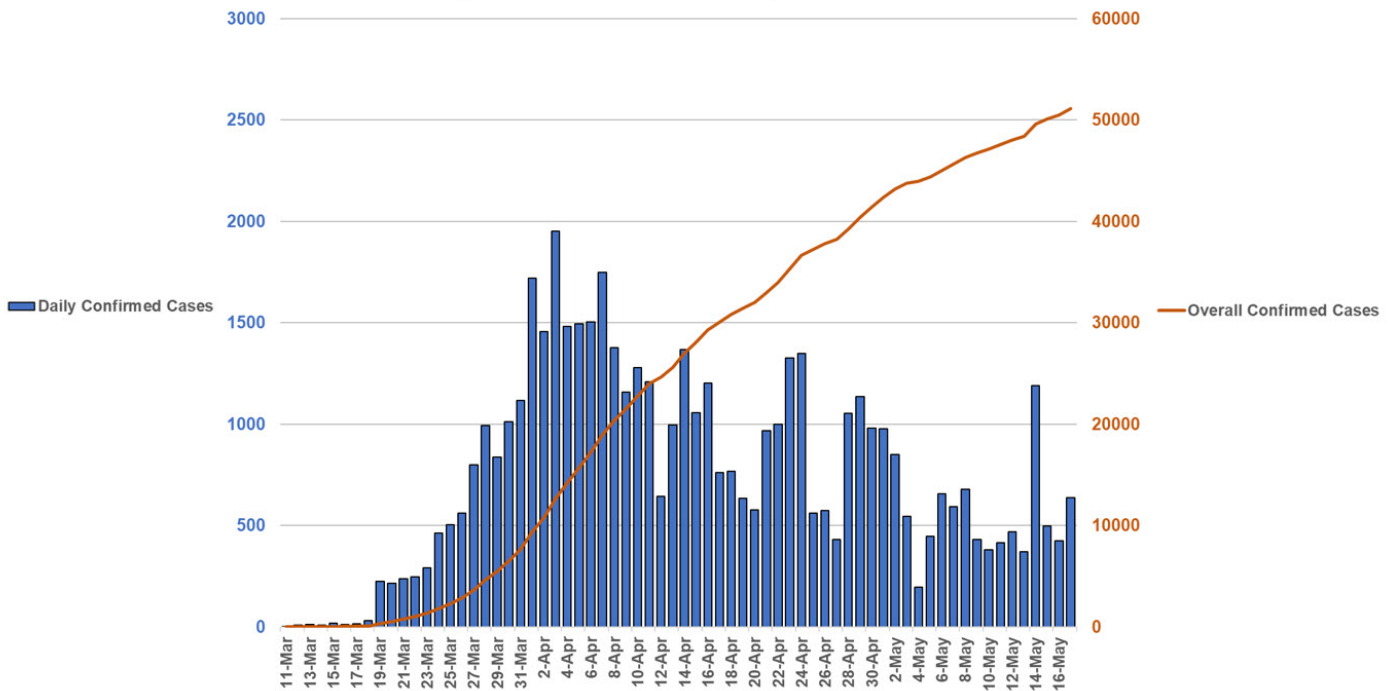
Note on Case Fatality Rate: The case fatality rate is the number of people who have died from causes associated with COVID-19 out of the total number of people with confirmed COVID-19 infections. It is used as one measure of illness severity. Several factors can affect this number. Until recently, COVID-19 lab testing has prioritized for hospitalized individuals due to limited testing availability. As a result, COVID-19 infections were identified more often in people who were more severely ill. This would lead to a higher case fatality rate. As more people with mild illness are tested, it is likely the case fatality rate will go down.

Cases by Arab Ethnicity

Arab Ethnicity	Percentage of Overall Cases by Ethnicity	Percentage of Deceased Cases by Ethnicity
Arab	2%	1%
Non-Arab	35%	37%
Unknown	63%	62%


Totals may not add to 100% due to rounding

Michigan COVID-19 Confirmed Case Epi-Curve and Cumulative Cases



MICHIGAN.GOV HOME
ADA
MICHIGAN NEWS
POLICIES

COPYRIGHT 2020 STATE OF MICHIGAN

 **Have questions?**
 Chat with Robin