



Western Michigan University
ScholarWorks at WMU

Cumulative Michigan COVID-19 Data

Michigan COVID-19 State Data

5-19-2020

2020-05-19_MichiganOverview_COVIDbedPPE

Michigan Department of Health & Human Services

Follow this and additional works at: <https://scholarworks.wmich.edu/michigan-covid-data-state-cumulative>



Part of the Public Health Commons

WMU ScholarWorks Citation

Michigan Department of Health & Human Services, "2020-05-19_MichiganOverview_COVIDbedPPE" (2020). *Cumulative Michigan COVID-19 Data*. 75.

<https://scholarworks.wmich.edu/michigan-covid-data-state-cumulative/75>

This Website is brought to you for free and open access by the Michigan COVID-19 State Data at ScholarWorks at WMU. It has been accepted for inclusion in Cumulative Michigan COVID-19 Data by an authorized administrator of ScholarWorks at WMU. For more information, please contact wmu-scholarworks@wmich.edu.



Coronavirus

- CONTAIN ▾
- RESOURCES ▾
- PRESS RELEASES
- VOLUNTEER
- DONATE

VIDEO UPDATES

CORONAVIRUS / MICHIGAN DATA

Michigan Data

This information is updated daily at 3 p.m., with COVID-19 results included as of 10 a.m.

***Note on deaths (05/19/20):** Regular reviews of death certificate data maintained in Vital Records reporting systems are conducted by MDHHS staff three times per week. As a part of this process, records that identify COVID-19 infection as a contributing factor to death are compared against all laboratory confirmed cases of COVID-19 in the Michigan Disease Surveillance System (MDSS). If a death certificate is matched to a confirmed COVID-19 case and that record in the MDSS does not indicate the individual died, the MDSS record is updated to indicate the death and the appropriate local health department is notified. These matched deaths are then included with mortality information posted to the Michigan Coronavirus website. As a result of the most recent assessment, today's data includes **43** additional deaths identified by this methodology.

Confirmed COVID-19 Cases by Jurisdiction updated 5/19/2020

County	Confirmed Cases	Reported Deaths
Alcona	6	1
Allegan	184	3
Alpena	91	9
Antrim	11	
Arenac	31	1
Baraga	1	
Barry	58	1
Bay	250	16
Benzie	4	
Berrien	538	33
Branch	95	2
Calhoun	308	19
Cass	61	2
Charlevoix	14	1
Cheboygan	19	1
Chippewa	2	
Clare	15	2
Clinton	136	10
Crawford	57	5
Delta	15	2
Detroit City	10417	1276
Dickinson	5	2
Eaton	165	6
Emmet	21	2
Genesee	1891	235
Gladwin	17	1
Gogebic	5	1
Grand Traverse	23	5
Gratiot	50	4

• DAILY COUNTS

• LAB TESTING

• DATA ABOUT PLACES

• LONG TERM CARE FACILITIES

• CORONAVIRUS SYMPTOMS

Cumulative Total of Recovered COVID-19 Cases (as of
5/15/2020): **28,234**

Note on recovery: During this response, MDHHS is reviewing vital records statistics to identify any laboratory confirmed COVID-19 cases who are 30 days out from their onset of illness to represent recovery status. As the pandemic continues to impact Michigan, this pool will expand to include more cases. Recovered is defined as the number of persons with a confirmed COVID-19 diagnosis who are alive 30 days post-onset (or referral date if onset is not available). The number of persons recovered on May 15, 2020 represents COVID-19 confirmed individuals with an onset date on or prior to April 15, 2020. ~~X~~ If an individual dies from a COVID-related cause >30 days from onset/referral, they are removed from the number of persons recovered. These numbers will be updated every Saturday.

Source: Michigan Disease Surveillance System and Vital Records

Age Data of Overall Deceased

Average Age	75.3 years
Median Age	77 years
Age Range	5-107 years

County	Confirmed Cases	Reported Deaths
Hillsdale	165	24
Houghton	2	
Huron	44	1
Ingham	650	23
Ionia	123	3
Iosco	65	8
Isabella	62	7
Jackson	418	26
Kalamazoo	739	44
Kalkaska	17	2
Kent	2934	58
Lake	3	
Lapeer	180	30
Leelanau	11	
Lenawee	140	3
Livingston	385	26
Luce	2	
Mackinac	6	
Macomb	6367	753
Manistee	11	
Marquette	52	10
Mason	27	
Mecosta	19	2
Menominee	8	
Midland	76	8
Missaukee	16	1
Monroe	433	18
Montcalm	56	1
Montmorency	5	
Muskegon	519	25
Newaygo	51	
Oakland	8078	928
Oceana	58	2
Ogemaw	18	
Osceola	10	
Oscoda	5	1
Otsego	99	10
Ottawa	573	25
Presque Isle	11	
Roscommon	21	
Saginaw	940	99
Sanilac	39	5
Schoolcraft	4	
Shiawassee	235	21
St Clair	412	32
St Joseph	90	1
Tuscola	173	21
Van Buren	116	6
Washtenaw	1251	89
Wayne	8875	999
Wexford	11	2
MDOC*	3122	60
FCJ**	118	3
Unknown	2	
Out of State	13	
Grand Total	52350	5017

*Michigan Department of Corrections

Overall Case Fatality Rate

Statewide Confirmed Cases	10%
---------------------------	-----

Cases by Sex

Sex	Percentage of Overall Cases by Sex	Percentage of Deceased Cases by Sex
Male	47%	53%
Female	53%	47%
Unknown	<1%	<1%

Totals may not add to 100% due to rounding

Cases by Age

Age	Percentage of Overall Cases by Age	Percentage of Deceased Cases by Age
0 to 19	3%	<1%
20 to 29	11%	<1%
30 to 39	14%	1%
40 to 49	16%	3%
50 to 59	18%	8%
60 to 69	16%	18%
70 to 79	11%	27%
80+	11%	42%
Unknown	<1%	0%

Totals may not add to 100% due to rounding

Cases by Race

Race	Percentage of Overall Cases by Race	Percentage of Deceased Cases by Race
American Indian or Alaska Native	<1%	<1%
Asian/Pacific Islander	2%	1%
Black or African American	31%	40%
Caucasian	36%	50%
Multiple Races	8%	2%
Other	5%	2%
Unknown	18%	4%

Totals may not add to 100% due to rounding

Cases by Hispanic/Latino Ethnicity

Hispanic/Latino Ethnicity	Percentage of Overall Cases by Ethnicity	Percentage of Deceased Cases by Ethnicity
Hispanic/Latino	6%	2%
Non-Hispanic Latino	62%	81%
Unknown	32%	17%

Totals may not add to 100% due to rounding

***Federal Correctional Institute*Michigan Department of Corrections*

Note on cumulative counts: This report is provisional and subject to change. As public health investigations of individual cases continue, there will be corrections to the status and details of referred cases that result in changes to this report. *City of Detroit and Wayne County are reported separately*

Note on the deaths: Deaths must be reported by health care providers, medical examiners/coroners, and recorded by local health departments in order to be counted.

Note on jurisdictional classification: In order to provide more accurate data, the "Other" jurisdiction category will no longer be used. Michigan Department of Corrections cases will be listed under "MDOC". Federal Correctional Institution cases will be listed under "FCI".

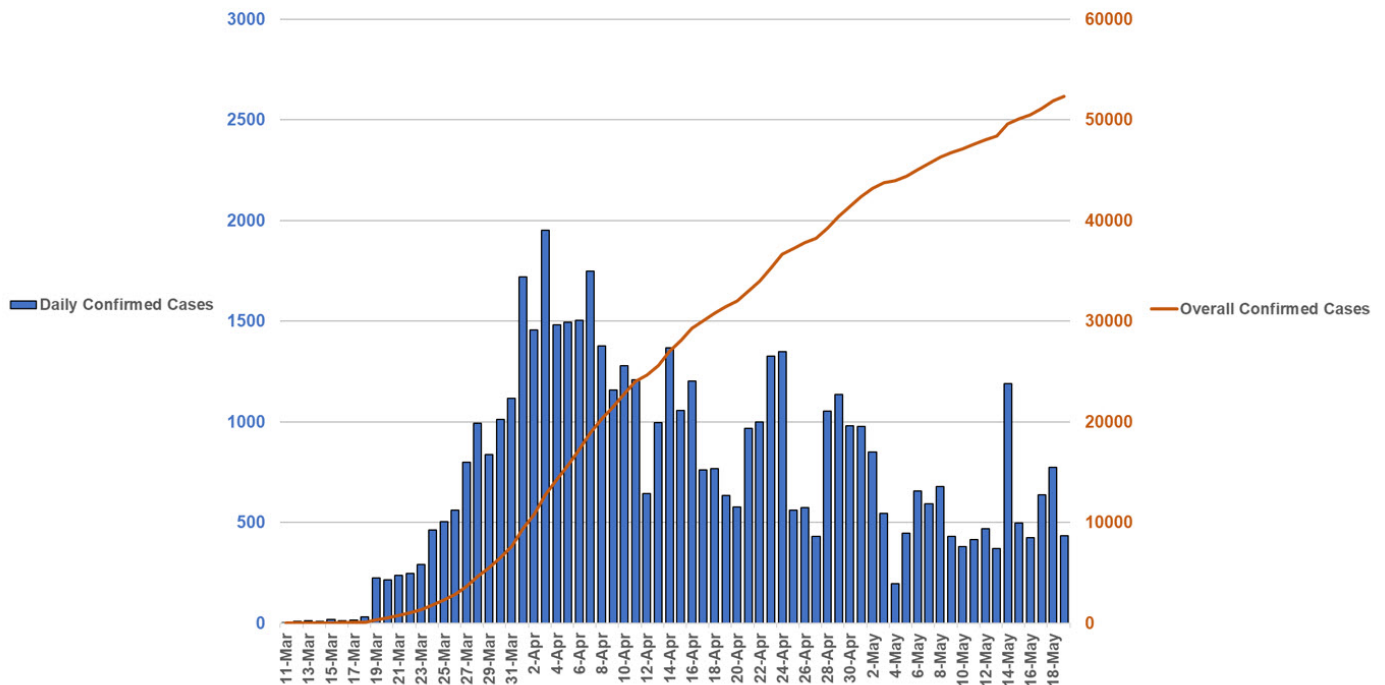
Note on Case Fatality Rate: The case fatality rate is the number of people who have died from causes associated with COVID-19 out of the total number of people with confirmed COVID-19 infections. It is used as one measure of illness severity. Several factors can affect this number. Until recently, COVID-19 lab testing has prioritized for hospitalized individuals due to limited testing availability. As a result, COVID-19 infections were identified more often in people who were more severely ill. This would lead to a higher case fatality rate. As more people with mild illness are tested, it is likely the case fatality rate will go down.


Cases by Arab Ethnicity

Arab Ethnicity	Percentage of Overall Cases by Ethnicity	Percentage of Deceased Cases by Ethnicity
Arab	2%	1%
Non-Arab	35%	37%
Unknown	63%	62%

Totals may not add to 100% due to rounding

Michigan COVID-19 Confirmed Case Epi-Curve and Cumulative Cases



 **Have questions?**
Chat with Robin



MICHIGAN.GOV HOME
ADA
MICHIGAN NEWS



Have questions?
Chat with Robin