



Western Michigan University
ScholarWorks at WMU

Legacy Scout Tickets from Pure Oil Company

8-20-2021

MGRRE_PureOilScoutTickets_BERRY,
ARCHIE_2_21011066660000

MGRRE
Western Michigan University

Follow this and additional works at: <https://scholarworks.wmich.edu/pure>



Part of the Geology Commons

WMU ScholarWorks Citation

MGRRE, "MGRRE_PureOilScoutTickets_BERRY, ARCHIE_2_21011066660000" (2021). *Legacy Scout Tickets from Pure Oil Company*. 78.
<https://scholarworks.wmich.edu/pure/78>

This Document is brought to you for free and open access via ScholarWorks at WMU. It has been accepted for inclusion in Legacy Scout Tickets from Pure Oil Company by an authorized administrator of ScholarWorks at WMU. See the National Digital Catalogue - Science Base Catalogue for more collections submitted by MGRRE.



MGRRE_PureOilScoutTickets_BERRY, ARCHIE_2_21011066660000

API 21011066660000

Permit Number 6666

Lease Name BERRY, ARCHIE

Well Number 2

County Arenac

Township 20N

Range 4E

Section 9

2021 DEQ or Pure co_name BERRY CECILE

Pure Number 83

Latitude 44.14419

Longitude -83.98845

The Pure Oil Company
THE PURE OIL COMPANYDATE April 29, 1937

LOCATION REPORT

No. 83

STATE Michigan COUNTY Arenac DIST. Clayton TWP. Clayton SEC. 9 TOWN 20 N RANGE 4 E
 WELL No. 2 (SERIAL No. 83) FARM A. Barrie ACRES

NAME OF STREAM OR WATERS _____ QUADRANGLE NW-NE-SE

OPERATOR Hal-Be-Oyle & Gas Corporation Map Clayton Township, Arenac County
330330 Hal-Be-Oyle & Gas Corp. Clayton-Arenac

Feet from North Line of Farm

" " East " " "

" " South " " "

330330 " " West " " "330330 Feet from North Line of Section990990 " " East " " "

" " South " " "

" " West " " "

W 1111 - Sp 4-17-37

LEGEND

○ LOCATION

⊕ RIG

⊕ DRILLING

⊗ GAS WELL

● OIL WELL

⬤ SMALL OIL WELL

⊖ DRY HOLE

⬤ DRY SHOWING OIL

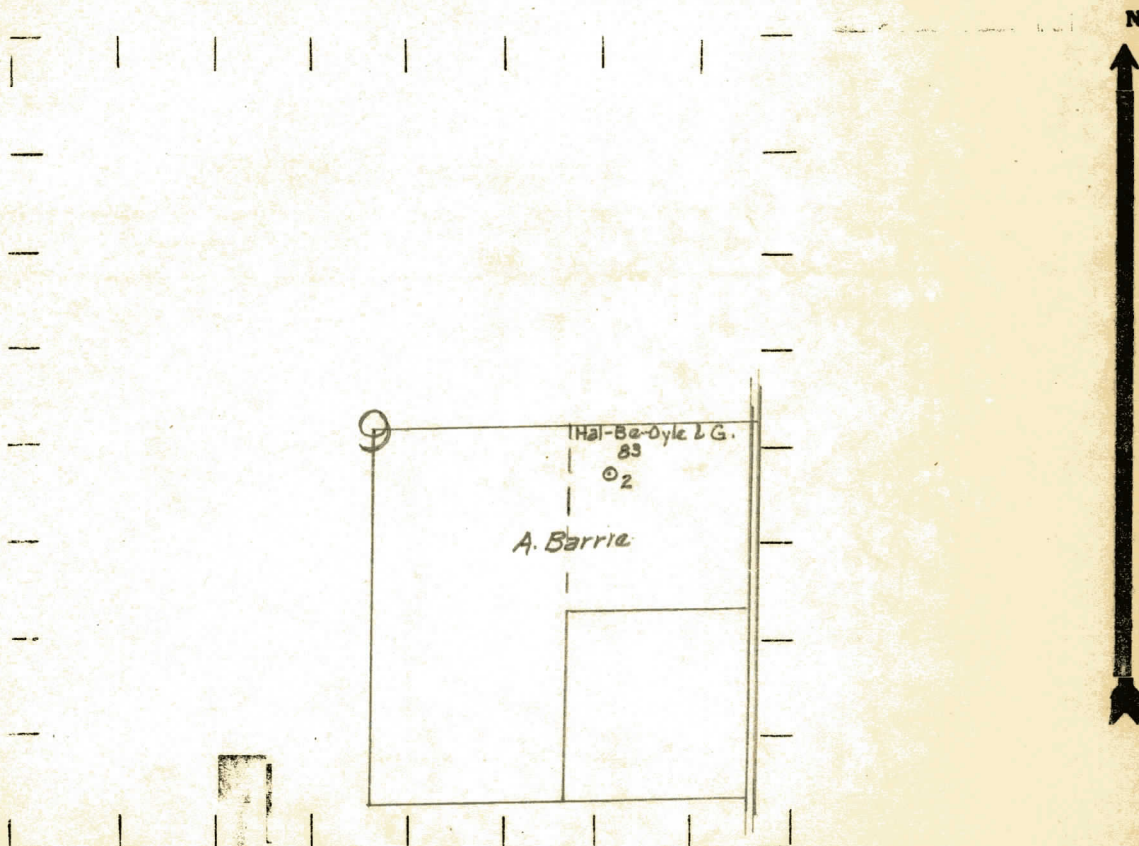
⊖ DRY SHOWING GAS

⊖ ABANDONED LOCATION

⊖ ABANDONED GAS WELL

⬤ ABANDONED OIL WELL

NOTE: Below make tracing from map, (when no map is obtainable make sketch) showing farm, center of section, this location with measurements and also wells, dry holes, or other locations in the vicinity of this location.



REMARKS:

SIGNED

R. L. Yeager

Superintendent or Foreman.

