



Western Michigan University
ScholarWorks at WMU

Legacy Scout Tickets from Pure Oil Company

8-20-2021

**MGRRE_PureOilScoutTickets_CRANDALL
WESLEY_3_21011041330000**

MGRRE
Western Michigan University

Follow this and additional works at: <https://scholarworks.wmich.edu/pure>



Part of the Geology Commons

WMU ScholarWorks Citation

MGRRE, "MGRRE_PureOilScoutTickets_CRANDALL WESLEY_3_21011041330000" (2021). *Legacy Scout Tickets from Pure Oil Company*. 83.
<https://scholarworks.wmich.edu/pure/83>

This Document is brought to you for free and open access via ScholarWorks at WMU. It has been accepted for inclusion in Legacy Scout Tickets from Pure Oil Company by an authorized administrator of ScholarWorks at WMU. See the National Digital Catalogue - Science Base Catalogue for more collections submitted by MGRRE.



MGRRE_PureOilScoutTickets_CRANDALL WESLEY_3_21011041330000

API 21011041330000

Permit Number 4133

Lease Name CRANDALL WESLEY

Well Number 3

County Arenac

Township 20N

Range 4E

Section 10

2021 DEQ or Pure co_name SUMMIT PETROLEUM CORP

Pure Number 88

Latitude 44.1480932

Longitude -83.9707784

THE PURE OIL COMPANY
THE PURE OIL COMPANY

Date Dec. 21, 1946 Corrected LOCATION REPORT A.F.E. No. _____
 Division Mich. Producing District _____ Lease W. Crandall
 Acres _____ Lease No. _____ Elevation _____ Well No. 3 (Serial No. 88)
 Quadrangle NW NE SE Sec. 10 Twp. 20 N Rge. 4 E ~~Big Rock~~ Twp. Clayton
 Survey _____ County Arenac State Michigan
 Operator Turner Petroleum Corp. Map Clayton Township, Arenac County

Feet from North Line of Lease

" " East " " "

" " South " " "

" " West " " "

Feet from North Line of Section

" " East " " "

" " South " " "

" " West " " "

LEGEND

○ Location



Gas Well



Dry Showing Gas



Oil Well



Abandoned Location



Gas - Distillate Well



Abandoned Gas Well



Dry Hole



Abandoned Oil Well



Dry Showing Oil



Input Well

See plat - Arenac #88.

N

Remarks: Change of operator.

Scale _____

Submitted by Scouting Dept.

Approved by _____

Division Manager

Approved by _____

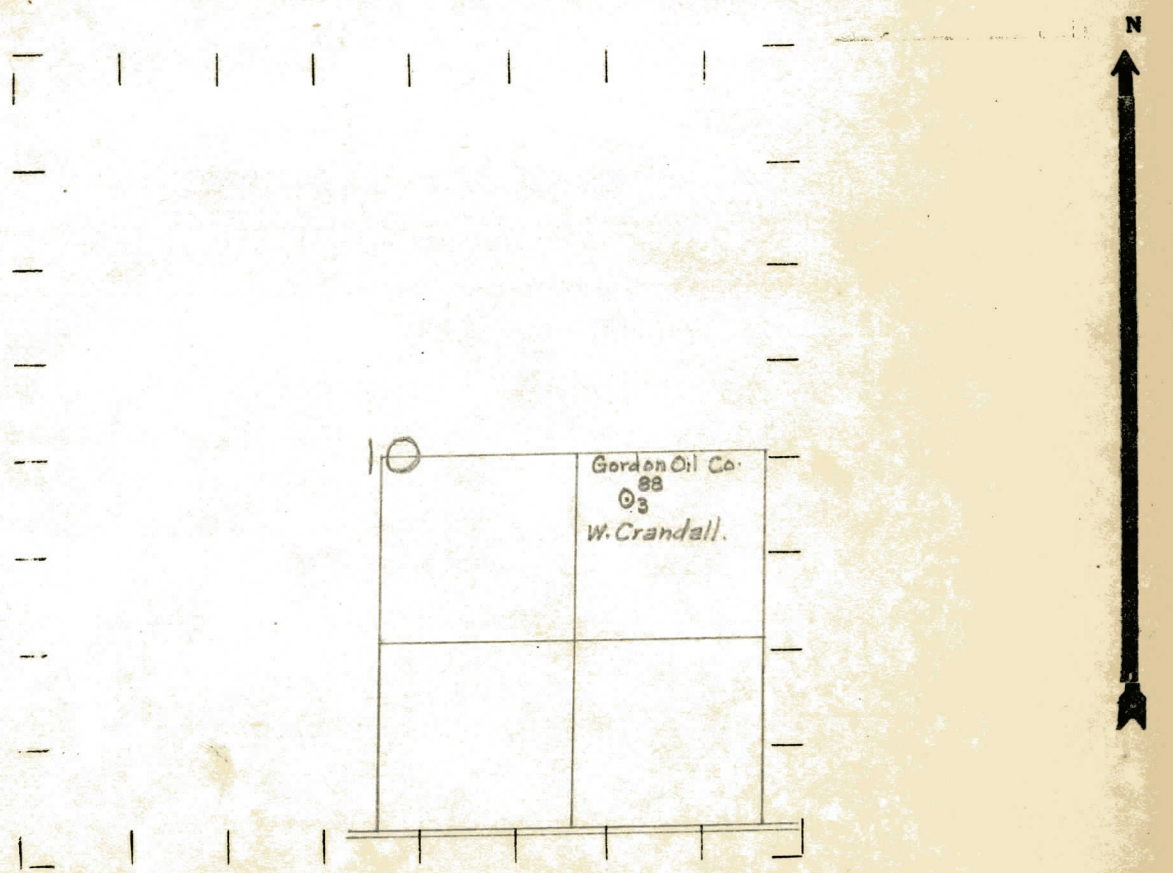
Vice-President - General Manager

Division Michigan District Clayton Clayton
 Date Dec. 31, 1937 Collected LOCATION REPORT V.E.E. No.
 DATE May 13, 1937 Arenac LOCATION REPORT NO. 00
 STATE Michigan COUNTY Arenac DIST. Clayton SEC. 10 TOWN 20 N RANGE 4 E
 WELL No. 3 (SERIAL No. 88) FARM W. Crandall ACRES
 NAME OF STREAM OR WATERS QUADRANGLE NW-NE-SE
1W NE SE

OPERATOR Gordon Oil Company Map Clayton Township, Arenac County
330 330 Gordon Oil Co. Clayton - Arenac
 Feet from North Line of Farm
 " " East " " "
 " " South " " "
330 330 " " West " " "
330 330 Feet from North Line of Section
990 990 " " East " " "
 " " South " " "
 " " West " " "

- LEGEND**
- LOCATION
 - ① RIG
 - ⊕ DRILLING
 - ☀ GAS WELL
 - OIL WELL
 - ⬮ SMALL OIL WELL
 - ⊖ DRY HOLE
 - ⬮ DRY SHOWING OIL
 - ⊖ DRY SHOWING GAS
 - ⊖ ABANDONED LOCATION
 - ☀ ABANDONED GAS WELL
 - ⬮ ABANDONED OIL WELL

NOTE: Below make tracing from map, (when no map is obtainable make sketch) showing farm, center of section, this location with measurements and also wells, dry holes, or other locations in the vicinity of this location.



REMARKS:

SIGNED R. L. Yeager
 Superintendent or Foreman.

Signed D. C. Shackelford