



Western Michigan University
ScholarWorks at WMU

Legacy Scout Tickets from Pure Oil Company

8-20-2021

**MGRRE_PureOilScoutTickets_CRANDALL S
S_2_21011042260000**

MGRRE
Western Michigan University

Follow this and additional works at: <https://scholarworks.wmich.edu/pure>



Part of the Geology Commons

WMU ScholarWorks Citation

MGRRE, "MGRRE_PureOilScoutTickets_CRANDALL S S_2_21011042260000" (2021). *Legacy Scout Tickets from Pure Oil Company*. 88.
<https://scholarworks.wmich.edu/pure/88>

This Document is brought to you for free and open access via ScholarWorks at WMU. It has been accepted for inclusion in Legacy Scout Tickets from Pure Oil Company by an authorized administrator of ScholarWorks at WMU. See the National Digital Catalogue - Science Base Catalogue for more collections submitted by MGRRE.



MGRRE_PureOilScoutTickets_CRANDALL S S_2_21011042260000

API 21011042260000

Permit Number 4226

Lease Name CRANDALL S S

Well Number 2

County Arenac

Township 20N

Range 4E

Section 10

2021 DEQ or Pure co_name SUMMIT PETROLEUM CORP

Pure Number 93

Latitude 44.149799

Longitude -83.9738231

THE PURE OIL COMPANY
THE PURE OIL COMPANY

Date Dec. 21, 1946 Corrected LOCATION REPORT A.F.E. No. _____
 Division Mich. Producing District _____ Lease S. S. Crandall
 Acres _____ Lease No. _____ Elevation _____ Well No. 2 (Serial No. 93)
 Quadrangle SE SW NE Sec. 10 Twp. 20 N Rge. 4 E ~~SE~~ ~~SW~~ ~~NE~~ Twp. Clayton
 Survey _____ County Arenac State Michigan
 Operator Turner Petroleum Corp. Map Clayton Township, Arenac County

____ Feet from North Line of Lease
 " " East " " "
 " " South " " "
 " " West " " "
 ____ Feet from North Line of Section
 " " East " " "
 " " South " " "
 " " West " " "

LEGEND

○ Location



Gas Well



Dry Showing Gas



Oil Well



Abandoned Location



Gas - Distillate Well



Abandoned Gas Well



Dry Hole



Abandoned Oil Well



Dry Showing Oil



Input Well

See plat - Arenac #93.

Remarks: Change of operator.

Scale _____

Submitted by Scouting Dept.

Civil Engineer

Approved by _____

Division Manager

Approved by _____

Vice-President - General Manager

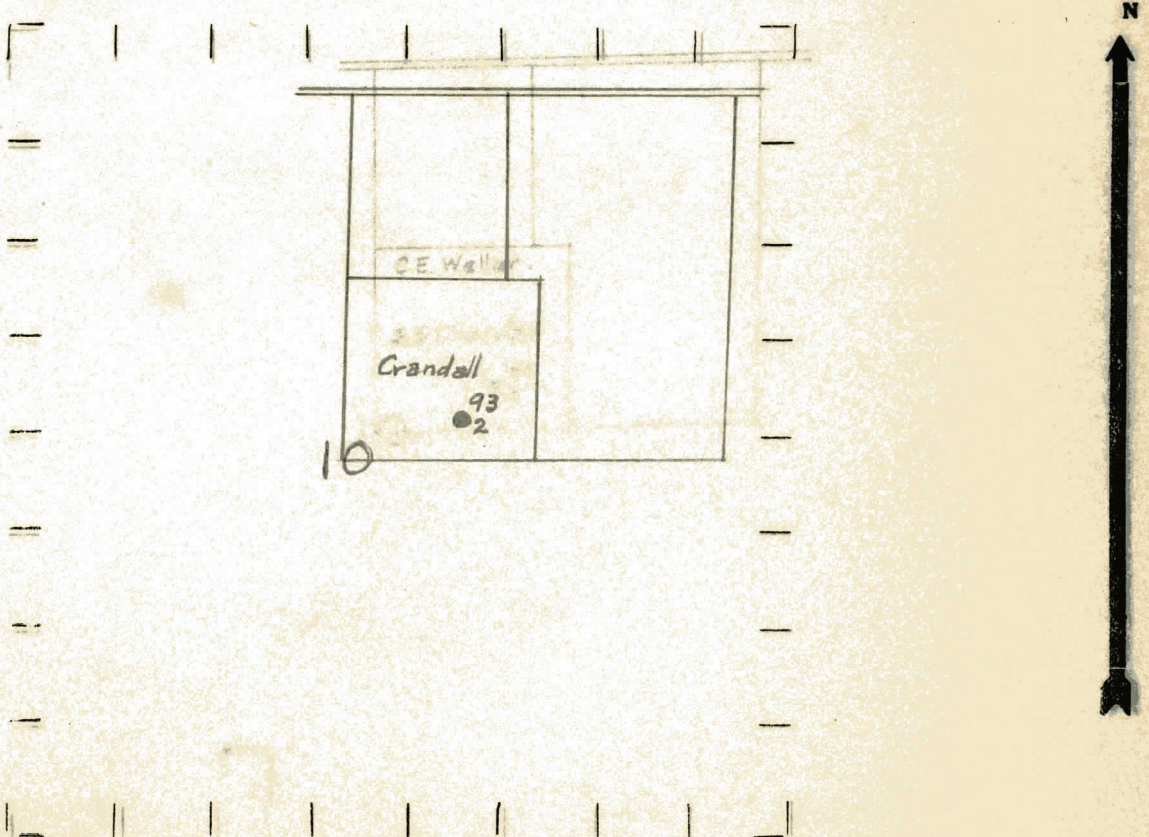
Division Michigan District Clayton 2° 2' Crandall
 Date Dec. 31, 1939 Collected LOCATION REPORT V.E.E. No. 70
 DATE June 8, 1939 Corrected LOCATION REPORT No. 70
 STATE Michigan COUNTY Arenac DIST. Clayton SEC. 10 TOWN 20 N RANGE 4 E
 WELL No. 22 (SERIAL No. 93) FARM S. S. Crandall ACRES 4 E
 NAME OF STREAM OR WATERS _____ QUADRANGLE SE SW NE

OPERATOR Great Western Petroleum Corp. Map Clayton Township, Arenac County
Great Western Pet. Corp. Clayton - Arenac

Feet from North Line of Farm
480 480 " " East " " "
250 250 " " South " " "
 " " West " " "
 Feet from North Line of Section
 " " East " " "
250 250 " " South 1/4 "
840 840 " " West 1/4 "

- LEGEND**
- LOCATION
 - ① RIG
 - ⊕ DRILLING
 - ☼ GAS WELL
 - OIL WELL
 - ⬮ SMALL OIL WELL
 - ⊙ DRY HOLE
 - ⬮ DRY SHOWING OIL
 - ⊙ DRY SHOWING GAS
 - ⊙ ABANDONED LOCATION
 - ☼ ABANDONED GAS WELL
 - ⬮ ABANDONED OIL WELL

NOTE: Below make tracing from map, (when no map is obtainable make sketch) showing farm, center of section, this location with measurements and also wells, dry holes, or other locations in the vicinity of this location.



REMARKS:

SIGNED R. L. Yeager
 Superintendent or Foreman

STATE Michigan COUNTY Arenac DIST. Clayton SEC. 10 TOWN 20 N RANGE 4 E
WELL No. 22 (SERIAL No. 93) FARM S. S. Crandall ACRES
NAME OF STREAM OR WATERS _____ QUADRANGLE SE-SW-NE
OPERATOR Charles Weller Map Clayton Township, Arenac County
Chas. Weller Clayton - Arenac

Feet from North Line of Farm

480 480 " " East " " "

250 250 " " South " " "

" " West " " "

Feet from North Line of Section

" " East " " "

250 250 " " South " 1/4 "

840 840 " " West " 1/4 "

LEGEND

○ LOCATION

⊙ RIG

⊕ DRILLING

☼ GAS WELL

● OIL WELL

⬮ SMALL OIL WELL

⊖ DRY HOLE

⬮ DRY SHOWING OIL

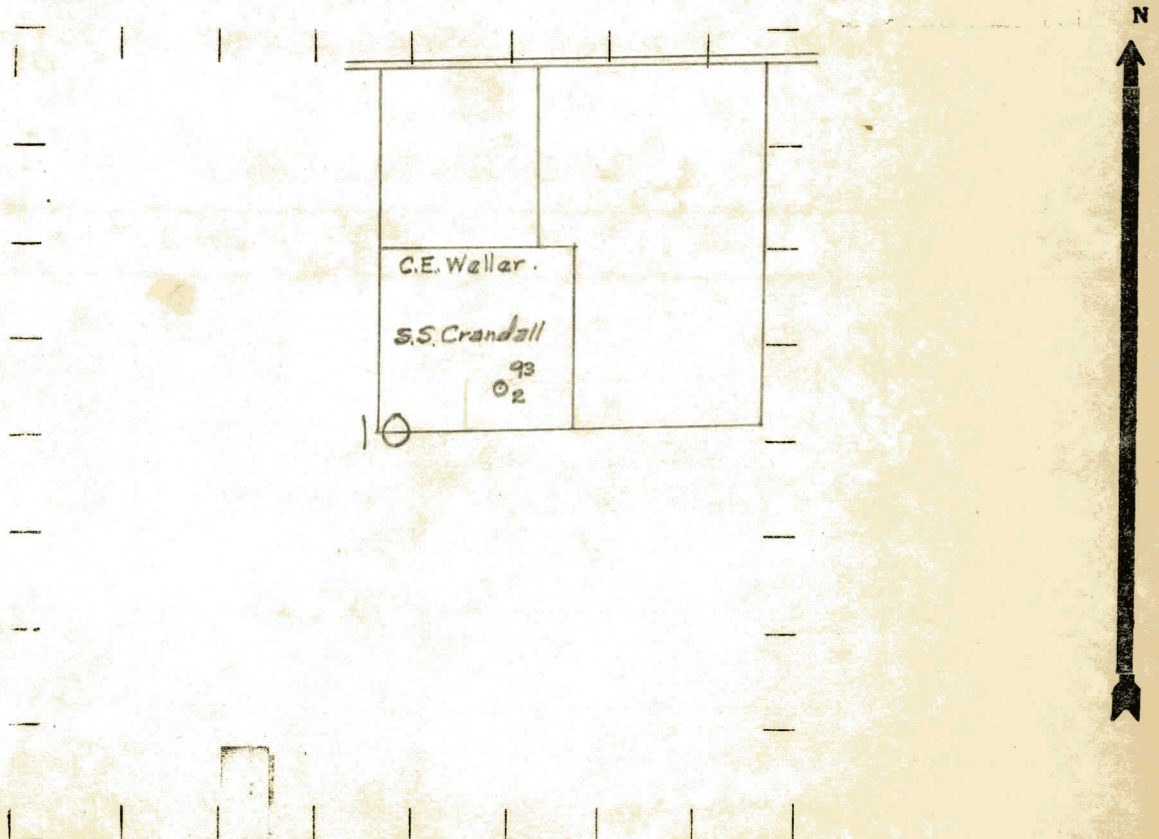
⬮ DRY SHOWING GAS

⊖ ABANDONED LOCATION

☼ ABANDONED GAS WELL

⬮ ABANDONED OIL WELL

NOTE: Below make tracing from map, (when no map is obtainable make sketch) showing farm, center of section, this location with measurements and also wells, dry holes, or other locations in the vicinity of this location.



REMARKS:

SIGNED

R. L. Yeager
Superintendent or Foreman

Signed **D. C. Shackelford**