



Western Michigan University
ScholarWorks at WMU

Legacy Scout Tickets from Pure Oil Company

8-20-2021

MGRRE_PureOilScoutTickets_BERRY,
ARCHIE_2_21011043110000

MGRRE
Western Michigan University

Follow this and additional works at: <https://scholarworks.wmich.edu/pure>



Part of the Geology Commons

WMU ScholarWorks Citation

MGRRE, "MGRRE_PureOilScoutTickets_BERRY, ARCHIE_2_21011043110000" (2021). *Legacy Scout Tickets from Pure Oil Company*. 93.
<https://scholarworks.wmich.edu/pure/93>

This Document is brought to you for free and open access via ScholarWorks at WMU. It has been accepted for inclusion in Legacy Scout Tickets from Pure Oil Company by an authorized administrator of ScholarWorks at WMU. See the National Digital Catalogue - Science Base Catalogue for more collections submitted by MGRRE.



MGRRE_PureOilScoutTickets_BERRY, ARCHIE_2_21011043110000

API 21011043110000

Permit Number 4311

Lease Name BERRY, ARCHIE

Well Number 2

County Arenac

Township 20N

Range 4E

Section 4

2021 DEQ or Pure co_name GORDON OIL CO

Pure Number 98

Latitude 44.15872

Longitude -83.99877

THE PURE OIL COMPANY

Serial No. 98

Date Oct. 10, 1946 Corrected

LOCATION REPORT

A.F.E. No. _____

Division Mich. Producing

District _____

Lease Archie BerryAcres _____ Lease No. _____ Elevation _____ Well No. 2 (Serial No. 98)Quadrangle SE NE SW Sec. 4 Twp. 20 N Rge. 4 E ~~XXXX~~ Twp. ClaytonSurvey _____ County Arenac State MichiganOperator Gordon Oil Company Map Clayton Township, Arenac County

____ Feet from North Line of Lease

" " East " " "

" " South " " "

" " West " " "

____ Feet from North Line of Section

" " East " " "

" " South " " "

" " West " " "

LEGEND

○ Location

☀ Gas Well

● Oil Well

☀ Gas - Distillate Well

○ or ○ Dry Hole

● Dry Showing Oil

☀ Dry Showing Gas

⊗ Abandoned Location

☀ or ☀ Abandoned Gas Well

● or ● Abandoned Oil Well

● or ○ Input Well

See plat - Arenac #98.

Remarks: Change of operator.

Scale _____

Submitted by Scouting Dept.

Approved by _____

Division Manager

Approved by _____

Vice-President - General Manager

Date Oct. 10, 1966 Collected LOCATION VERONT

A.E.E. №

Date April 1, 1942

LOCATION REPORT

A.F.E. No.

Division Mich. Producing

District

DIST. Clayton

Lease

Archie Berry

Acres _____ Lease No. _____ Elevation _____ Well No. 2

Quadrangle SE NE SW Sec. 4 Twp. 20 N Rge. 4 E Twp. Clayton

Survey _____ County Arenac State Michigan

Operator Ohio Oil Company Map Clayton Township, Arenac County

Feet North of South Line of Lease

“ East “ West “ “ “

“ South “ North “ “ “

“ West “ East “ “ “

Feet North of South Line of Section

“ East “ West “ “ “

“ South “ North “ “ “

“ West “ East “ “ “

LEGEND


☐ Location

 **Gas Well**

● Oil Well

 or Dry Hole

● Dry Showing Oil

 Dry Showing Gas

 Abandoned Location

 or  Abandoned Gas Well

● or ● Abandoned Oil Well

Plugged and abandoned 5-6-41.

Total depth 2591½'.

N

Remarks: Change of operator.

Scale.

Submitted by _____

Civil Engineer

Approved by _____

Division Manager

Approved by _____

Vice-President – General Manager

WELL No. 22 (SERIAL No. 98) FARM Archie Berry ACRES

NAME OF STREAM OR WATERS QUADRANGLE SE NE SW

OPERATOR Weber Oil Company Map Clayton Township, Arenac County
Weber Oil Co. Clayton - Arenac.

528 528 Feet from North Line of Farm

330 330 " " East " " "

" " South " " "

" " West " " "

1188 1188 Feet from North Line of Section 1/4

330 330 " " East " 1/4 "

" " South " " "

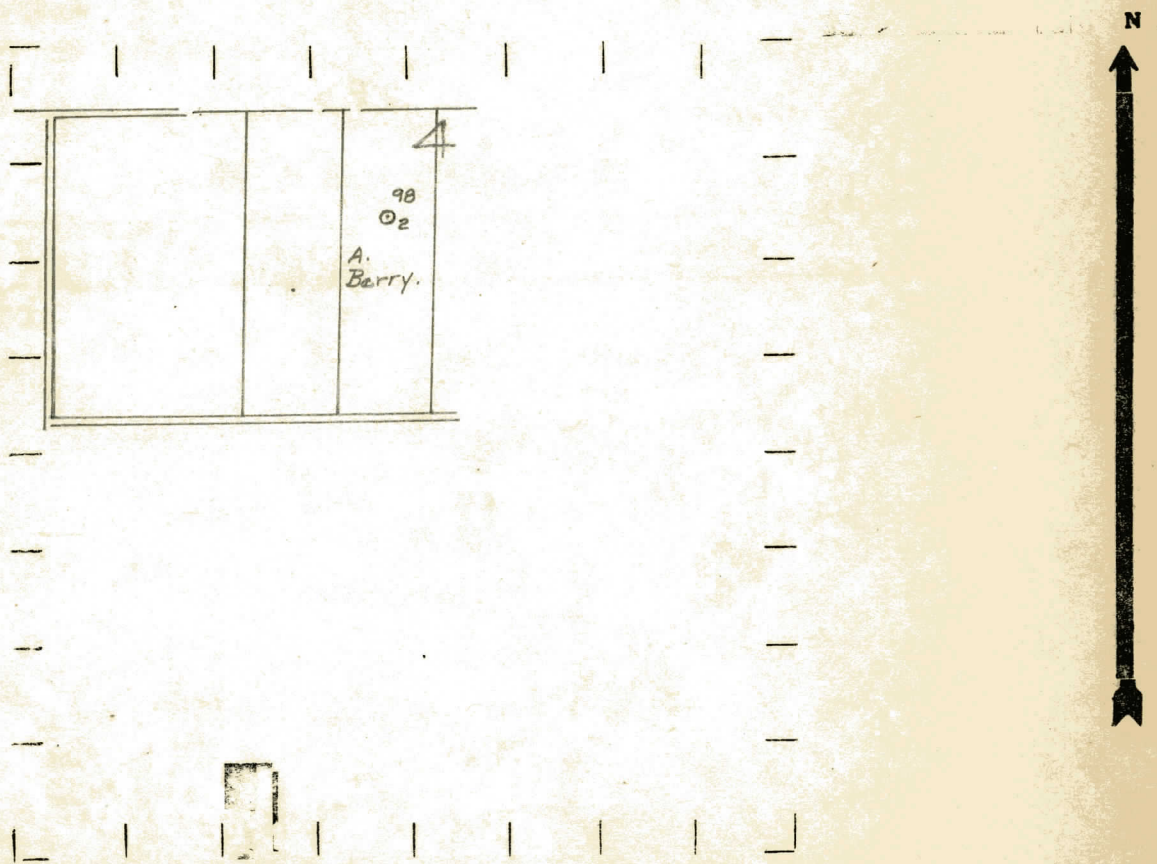
" " West " " "

5-6-41

LEGEND

- | | |
|------------------|----------------------|
| ○ LOCATION | ⊕ DRY HOLE |
| ⊙ RIG | ⬮ DRY SHOWING OIL |
| ⊕ DRILLING | ⊕ DRY SHOWING GAS |
| ☀ GAS WELL | ⊕ ABANDONED LOCATION |
| ● OIL WELL | ☀ ABANDONED GAS WELL |
| ⬮ SMALL OIL WELL | ⬮ ABANDONED OIL WELL |

NOTE: Below make tracing from map, (when no map is obtainable make sketch) showing farm, center of section, this location with measurements and also wells, dry holes, or other locations in the vicinity of this location.



REMARKS:

SIGNED

Superintendent or Foreman.

Michigan Producing Division

Date December 9, 1937 No. 98

State Michigan County Arenac Dist. Clayton Twp. Sec. 4 Twp. 20 N Rge. 4 E

Well No. 2 (Serial No.) 98 Farm Archie Berry Acres _____

Operator Weber Oil Company by Scouting Department Information secured ~~from~~

Date well started 9-14-37 Date well completed 11-4-37 Elevation 801.5

PRODUCTION RECORD

1st 24 hours natural 30 Bbls. Oil and 13 Bailers Salt Water

2nd 24 hours natural

[illegible]

Date of acid **12-1-37** No. of gallons **1500**

1st 24 hours after acid 65 Bbls.

2nd 24 hours after acid

FORMATION AND CASING RECORD

[illegible]

Remarks	Gas at 1112'-gauged 250,000 cu. ft.-hole full water at 1660
---------	---

Signed D. C. Shackelford