



Western Michigan University
ScholarWorks at WMU

Legacy Scout Tickets from Pure Oil Company

8-20-2021

MGRRE_PureOilScoutTickets_Archie Berry_1_na

MGRRE

Western Michigan University

Follow this and additional works at: <https://scholarworks.wmich.edu/pure>



Part of the Geology Commons

WMU ScholarWorks Citation

MGRRE, "MGRRE_PureOilScoutTickets_Archie Berry_1_na" (2021). *Legacy Scout Tickets from Pure Oil Company*. 98.

<https://scholarworks.wmich.edu/pure/98>

This Document is brought to you for free and open access via ScholarWorks at WMU. It has been accepted for inclusion in Legacy Scout Tickets from Pure Oil Company by an authorized administrator of ScholarWorks at WMU. See the National Digital Catalogue - Science Base Catalogue for more collections submitted by MGRRE.



MGRRE_PureOilScoutTickets_Archie Berry_1_na

API na

Permit Number na

Lease Name Archie Berry

Well Number 1

County Arenac

Township 20N

Range 4E

Section 10

2021 DEQ or Pure co_name American Drilling Co.

Pure Number 103

Latitude 44.1490368

Longitude -83.9772501

The Pure Oil Company
THE PURE OIL COMPANYDATE July 29, 1937

LOCATION REPORT

No. 103 *STATE Michigan COUNTY Arenac DIST. Clayton TWP. Clayton SEC. 9 TOWN 20 N RANGE 4 EWELL No. 11 (SERIAL No. 103) FARM Archie Berry ACRESNAME OF STREAM OR WATERS QUADRANGLE NW-NW-NEOPERATOR American Drilling Company Map Clayton Township, Arenac County330 330 American Drilling Co.
Feet from North Line of Farm

" " East " " "

" " South " " "

330 330 " " West " " "330 330 Feet from North Line of Section

" " East " " "

" " South " " "

330 330 " " West " 1 1/4 "

Loc

LEGEND

○ LOCATION

① RIG

⊕ DRILLING

☼ GAS WELL

● OIL WELL

⦿ SMALL OIL WELL

⊙ DRY HOLE

⦿ DRY SHOWING OIL

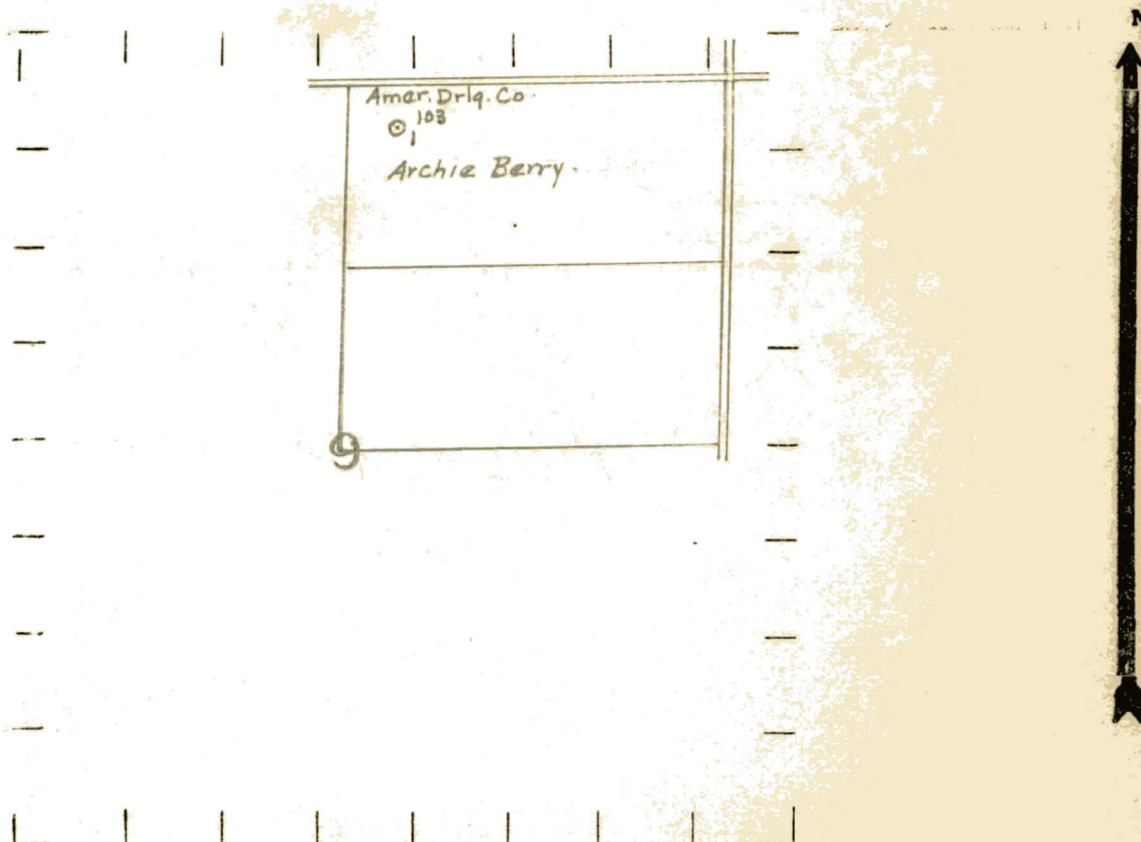
⦿ DRY SHOWING GAS

⦿ ABANDONED LOCATION

☼ ABANDONED GAS WELL

⦿ ABANDONED OIL WELL

NOTE: Below make tracing from map, (when no map is obtainable make sketch) showing farm, center of section, this location with measurements and also wells, dry holes, or other locations in the vicinity of this location.



REMARKS:

SIGNED

Superintendent or Foreman.

