



Western Michigan University
ScholarWorks at WMU

Legacy Color Lithology Strip Logs

5-16-2022

MGRRE_LithStripLog_Benton Harbor 1_21021003699000

MGRRE Western Michigan University

Follow this and additional works at: <https://scholarworks.wmich.edu/lith>



Part of the Geology Commons

WMU ScholarWorks Citation

Western Michigan University, MGRRE, "MGRRE_LithStripLog_Benton Harbor 1_21021003699000" (2022).

Legacy Color Lithology Strip Logs. 113.

<https://scholarworks.wmich.edu/lith/113>

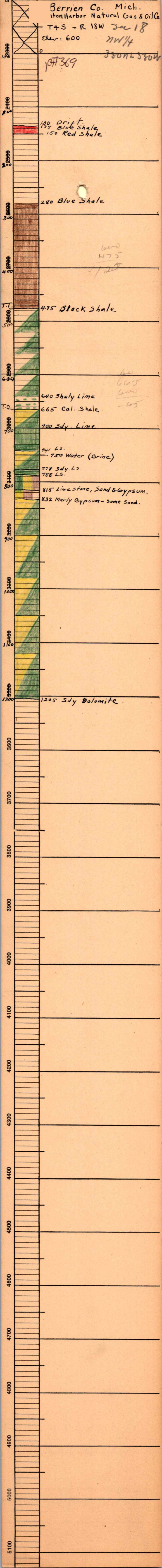
This Document is brought to you for free and open access by ScholarWorks at WMU. It has been accepted for inclusion in Legacy Color Lithology Strip Logs by an authorized administrator of ScholarWorks at WMU. For more information, please contact wmu-scholarworks@wmich.edu.



Berrien Co. Mich.
 Iron Harbor Natural Gas & Oil Co.

T4S - R 18W Sec 18
 Elev: 600 NW 1/4
 380N L 380W

107369



130 Drift.
 135 Blue Shale
 150 Red Shale

280 Blue Shale

475 Black Shale

640 Shaly Lime

665 Cal. Shale

700 Sdy. Lime

741 Ls.
 750 Water (Brine)

778 Sdy. Ls.
 788 Ls.

815 Limestone, Sand & Gypsum.
 832 Marly Gypsum - some Sand.

1205 Sdy Dolomite

660
 475
 1125

665
 665
 -65