



Western Michigan University  
ScholarWorks at WMU

---

Legacy Scout Tickets from Pure Oil Company

---

8-20-2021

**MGRRE\_PureOilScoutTickets\_BUHL, A L\_1\_21011045720000**

MGRRE

*Western Michigan University*

Follow this and additional works at: <https://scholarworks.wmich.edu/pure>



Part of the Geology Commons

---

#### WMU ScholarWorks Citation

MGRRE, "MGRRE\_PureOilScoutTickets\_BUHL, A L\_1\_21011045720000" (2021). *Legacy Scout Tickets from Pure Oil Company*. 116.

<https://scholarworks.wmich.edu/pure/116>

This Document is brought to you for free and open access via ScholarWorks at WMU. It has been accepted for inclusion in Legacy Scout Tickets from Pure Oil Company by an authorized administrator of ScholarWorks at WMU. See the National Digital Catalogue - Science Base Catalogue for more collections submitted by MGRRE.



---

**MGRRE\_PureOilScoutTickets\_BUHL, A L\_1\_21011045720000**

API 21011045720000

Permit Number 4572

Lease Name BUHL, A L

Well Number 1

County Arenac

Township 20N

Range 4E

Section 8

2021 DEQ or Pure co\_name RAYBURN OIL CO INC

Pure Number 121

Latitude 44.1551712

Longitude -84.0091358

## THE PURE OIL COMPANY

February 17, 1943 Corrected LOCATION REPORT

A.F.E. No. \_\_\_\_\_

Date \_\_\_\_\_ Division Mich. Producing District \_\_\_\_\_ Lease A. L. BuhlAcres \_\_\_\_\_ Lease No. \_\_\_\_\_ Elevation \_\_\_\_\_ Well No. 1 (Serial No. 121)Quadrangle NE NE NE Sec. 8 Twp. 20 N Rge. 4 E Twp. ClaytonSurvey \_\_\_\_\_ County Arenac State MichiganOperator Don F. Rayburn Map Clayton Township, Arenac County

Feet from North Line of Lease

" " East " "

" " South " "

" " West " "

Feet from North Line of Section


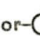

" " East " "

" " South " "

" " West " "

## LEGEND

○ Location

 Gas Well Oil Well Gas - Distillate Well or  Dry Hole Dry Showing Oil Dry Showing Gas Abandoned Location or  Abandoned Gas Well or  Abandoned Oil Well or  Input Well

See plat - Serial No. Arenac 121.

N

Scale \_\_\_\_\_

Remarks: Change of operator and farm name.Submitted by J.S. - Scouting Department ~~XXXX Engineer~~ Approved by \_\_\_\_\_ Division Manager

Approved by \_\_\_\_\_ Vice-President - General Manager

Date 10/19/1919 11:10 AM Collected LOCATION REPORT No. 121

STATE Michigan COUNTY Arenac DIST. Clayton SEC. 8 TOWN 20 N RANGE 4 E  
WELL No. 1 (SERIAL No. 121) FARM Dorothea Barnes ACRES

NAME OF STREAM OR WATERS QUADRANGLE NE NE NE

OPERATOR Ross & Bernier Map Clayton Township, Arenac County  
330330 Ross & Bernier Clayton - Arenac

330330 Feet from North Line of Farm

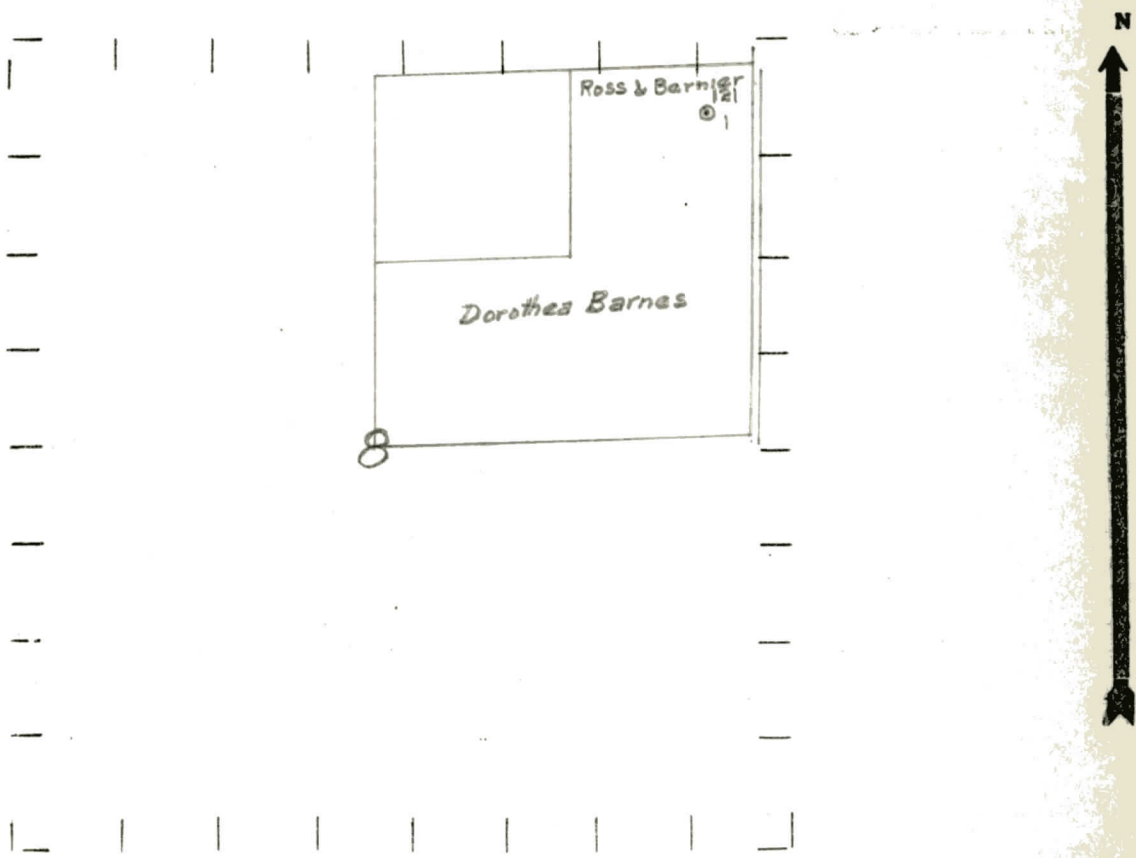
330330 " " East " " "  
" " South " " "  
" " West " " "

330330 Feet from North Line of Section

330330 " " East " " "  
" " South " " "  
" " West " " "

- LEGEND
- O LOCATION
  - ① RIG
  - ⊕ DRILLING
  - ☀ GAS WELL
  - OIL WELL
  - ◆ SMALL OIL WELL
  - ⊙ DRY HOLE
  - ◆ DRY SHOWING OIL
  - ☀ DRY SHOWING GAS
  - ⊙ ABANDONED LOCATION
  - ☀ ABANDONED GAS WELL
  - ABANDONED OIL WELL

NOTE: Below make tracing from map, (when no map is obtainable make sketch) showing farm, center of section, this location with measurements and also wells, dry holes, or other locations in the vicinity of this location.



REMARKS:

SIGNED R. L. Yeager  
Superintendent or Foreman



