



Western Michigan University
ScholarWorks at WMU

Faculty Recognition

Western Michigan University

5-28-2009

Faculty Retirement Recognition Dinner 2009

Western Michigan University

Follow this and additional works at: <https://scholarworks.wmich.edu/faculty-recognition>



Part of the Higher Education Commons

WMU ScholarWorks Citation

Western Michigan University, "Faculty Retirement Recognition Dinner 2009" (2009). *Faculty Recognition*. 120.

<https://scholarworks.wmich.edu/faculty-recognition/120>

This Program is brought to you for free and open access by the Western Michigan University at ScholarWorks at WMU. It has been accepted for inclusion in Faculty Recognition by an authorized administrator of ScholarWorks at WMU. For more information, please contact wmu-scholarworks@wmich.edu.





WESTERN MICHIGAN UNIVERSITY

*Faculty
Retirement
Recognition
Dinner*

May 28, 2009



WESTERN MICHIGAN UNIVERSITY



May 28, 2009

Dear Colleagues and Friends,

Many have stated that the heart of a university is its faculty. I believe it. Surely, the corpus of Western Michigan University owes its long life and good health to its teachers—those who nurtured and protected its early years, those who stuck with it during the growth spurts and identity crises of its adolescence, and those, like you, who today shape and nourish the character of the vigorous, productive institution that Western has become.

Each of you, in your own time and in your own manner, will leave your mark on this university. Your devotion to learning and your leadership in your discipline have nourished and enhanced the body of knowledge we proudly offer to others. It is, though, your passion for teaching and scholarship, and your genuine caring for our students that measure the real capacity and strength of Western's healthy heart. While our university strides forward in the days ahead, we will do so with the confidence and stamina provided us by your life's work here.

As you step away from the classroom and into a life of new endeavors and unimagined opportunities, please know that you will remain an integral part of who we are. I thank you, from the bottom of *my heart*, for your countless kindnesses and sacrifices, and for the significant difference you each have made in the lives of our students.

Sincerely,

A handwritten signature in dark ink, reading "John M. Dunn".

John M. Dunn
President



PROGRAM

Trumpet Fanfare Scott Thornburg
Emcee Lewis Walker

DINNER

Greetings from the Faculty Senate John Jellies

Recognition of the Honorees:

Presentation of Certificates John M. Dunn

Presentation of Legislative Tributes

Welcome to the Ranks of Emeriti Sandra Edwards

Honorees' Response Arnie Johnston

Entertainment Bronco Way

Samantha Galvin
Chaz Lowery
Michael Potsic
Kenzie Ross
Alycia Thoel
Frank Williams
Mikey Winslow
Sue Yen

WMU Alma Mater Sung by All

MENU



Chilled Garden Salad
with choice of dressing

Champagne Chicken in Cream Sauce
served with Potato Latke

Asparagus

Vegetarian:
Mushroom Melange Ravioli
with Sauce Provencal

Rolls and Butter

Raspberry Dream Cake
or
Chocolate Layer Cake

Beverages

HONORED GUESTS

This evening we honor 15 of our faculty colleagues who are joining the ranks of Western Michigan University's retirees. This group, like so many before them, have contributed greatly to the growth and development of the University during their tenure here. They have witnessed countless changes which have guided the University through many interesting and challenging times.

We express our sincerest appreciation to these retiring faculty for their years of dedication to Western Michigan University and wish them a full and happy retirement. By honoring the accomplishments of our retired faculty, we also honor the accomplishments of Western, for the two are inextricably interwoven.

DeWayne Anderson	Gwendolyn Nagle
Gary Bigelow	Gerard Nowak
Marlene Breu	Cindee Quake-Rapp
Josephine Barry Davis	Judith Sadler
Paul Eenigenburg	Radu Teodorescu
William (Arnie) Johnston	Gary Wegenke
Norman Kiracofe	Arthur White
Gerald Markle	



DeWayne Anderson

Associate Professor of Teaching, Learning, and Educational Studies



DeWayne Anderson was born and raised in Minnesota and received a bachelor's degree in biology from Concordia College in Moorhead, Minnesota. Following receipt of this degree, he was the recipient of National Science Foundation fellowships for full time graduate study during the summers of 1966 and 1967 and the 1967-68 academic year, earning a master's degree in science and mathematics education at Michigan State University in 1968. He earned his doctoral degree in measurement, evaluation, and research design from MSU in 1987. Prior to that he engaged in almost twenty years of high school teaching in Sisseton, South Dakota; Sheboygan, Wisconsin; and Okemos, Michigan.

In addition, from 1981 to 1984 he was employed as a measurement consultant and research associate at the Institute for Research on Teaching at Michigan State University.

Since arriving at Western Michigan University in 1987, DeWayne has taught graduate and undergraduate classes, published many journal articles, made numerous professional presentations, and has served as co-director and project manager on several grants. In addition, from 1987 to 1996 he served on the board of directors of a state-sponsored consortium, Science Education in Michigan Schools, and he was also a member of the Michigan Science Teacher Association board of directors from 1990 to 1992. He has also been an active member of the WMU chapter of Phi Delta Kappa, serving as its newsletter editor from 1988 to 1994 and its treasurer from 1995 to the present.

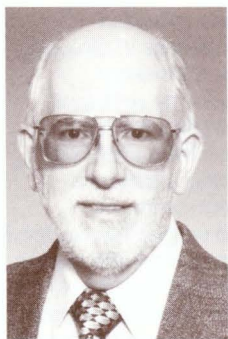
During his last eleven years at Western, DeWayne served primarily in an administrative role, first as assistant chair of the Department of Teaching, Learning, and Leadership (1997-2004), then as interim chair of the Department of Educational Studies (2004-05), then as chair of the Department of Teaching, Learning, and Leadership (2005-06), and finally as chair of the Department of Teaching, Learning, and Educational Studies (2006-08).

DeWayne has been the recipient of several awards, including a Distinguished Service Award presented by Michigan Science Teachers Association in 1992, the Esprit de Corps Award presented by WMU's College of Education in 2002, and a Distinguished Service Award presented by Phi Delta Kappa in 2005.

DeWayne began his retirement on September 1, 2008, the first September in sixty-one years he did not go back to school. He is currently doing whatever he wants to do, including enjoying the sights and sounds of nature. He has come to love Michigan and the Kalamazoo area and plans to continue living here with his wife, Janice. Future travel plans include a trip to Norway to introduce her to the land of his ancestors, as well as winter trips to Florida, especially during the month of March to watch major league baseball with his son.

Gary E. Bigelow

Associate Professor of Spanish



Gary Bigelow was born in Philadelphia. He was raised nearby, in Upper Darby, in whose public schools he began to study Spanish. He continued learning that language in Lancaster, earning a B.A. degree in Spanish from Franklin and Marshall College. At the University of Pittsburgh, he completed his M.A. and Ph.D. degrees in Hispanic Languages and Literatures.

Gary completed his doctoral dissertation in December 1973, while teaching four different courses that first full-time semester at the University of Wisconsin-Green Bay. By 1975, a state budgetary crisis had eliminated his tenure track position, but he continued two-thirds time that year, while holding a full-time

position with UMOS, an agency dedicated to serving Spanish-speaking migrant farm workers. From 1976 to 1978, he taught a variety of Spanish courses at Central Michigan University. He came to Kalamazoo in August 1978 for the first of what would be thirty and one-half years of teaching, research, and service at Western Michigan University. Here he taught a variety of courses in Spanish language, literature, and culture. During two summers he gave intermediate language courses at Kalamazoo College. He is a charter member of WMU's chapter of Phi Beta Kappa, he served on various departmental committees, and was for several years the departmental representative to the AAUP Association Council. For most of the eighties, he edited or co-edited the *Michigan Foreign Language Newsletter*, and for one year he was the president of the Michigan Chapter of the American Association of Teachers of Spanish and Portuguese.

Gary's doctoral dissertation was on Calderón de la Barca. The summer of 1979, he was selected for a National Endowment for the Humanities Summer Seminar in Chicago. During his first sabbatical (1983-84), a Fulbright fellowship, administered under the United States-Spain Friendship Treaty, he spent eight months in Spain, six of them accompanied by his family. It was in 1983 that Gary was able to begin fulfilling a promise made when he was interviewed in 1978: to develop his expertise in contemporary Spanish theatre and culture. It was his work with Cabal that led to his meeting and interviewing other playwrights including José Luis Alonso de Santos, Paloma Pedrero, and Ignacio del Moral.

Gary's plans for retirement are completing a translation to English of the reminiscences of a Spaniard who grew up under the Franco regime; doing volunteer work, some Spanish-related; learning to play the guitar; singing in the church choir; continuing to play softball for the Mambo Kings (the departmental team, of which he is one of the founding "grandfathers"); furthering his scant knowledge of Portuguese; using the gym; shoveling snow in the winter; biking, kayaking, and canoeing in the summer; catching up on reading; and reducing the excessive number of books in his basement from the recent move from his office.

Marlene R. Breu

Professor of Family and Consumer Sciences



Marlene R. Breu earned her B.S. degree from James Madison University, her M.S. degree from Purdue University and her Ph.D. from the University of Minnesota. Prior to earning her doctorate, Marlene taught at the University of Illinois, College of St. Scholastica, and the University of Minnesota-Duluth. Marlene is a native of New Market, Virginia, and earned degrees in the field of Textiles and Apparel.

Marlene joined the faculty at Western Michigan University in the fall of 1996. She was awarded a Fulbright Senior Lecturer position at the Izmir Economics University in Turkey in 2003-04 and also was appointed a research associate of the Diether H. Haenicke Center for International and Area Studies in 1999. At Western,

Marlene has taught undergraduate and graduate courses in textiles, the history of fashion, and the socio and psychological aspects of dress. She emphasized a multicultural perspective within her courses and developed a course about Turkish culture and families. She also planned and facilitated several study tour opportunities for students and faculty in Turkey.

She established an international reputation as a scholar of traditional Turkish dress and culture and historical textiles from Constantinople. She conducted field research in Turkey for 18 years and co-authored two books and multiple articles, abstracts, and presentations related to the sacred relics and artifacts of the Armenian Orthodox Churches of Istanbul. She often lectured on Turkish family life and opened her home to visiting Turkish students. Marlene was a recipient of the Eulalia Toms Family and Consumer Sciences Research Endowment Fund, the Harold Keshishian private fund for research, and the Knights of Vartan Fund for Armenian Studies.

Following retirement, Marlene plans additional travel including trips to New York City, rural Virginia, and Turkey. She looks forward to attending musical and theatrical productions, and enjoying her children and friends in Michigan, Virginia, and Turkey.

Josephine Barry Davis

Associate Professor of Teaching, Learning, and Educational Studies



Josephine Barry Davis was born in Reading, England, and spent her childhood in the village of Tourrette-Levens, close to Nice in the south of France. She graduated from the Sorbonne, the University of Paris, and then trained under Mario Montessori in Italy before coming to the United States in 1969.

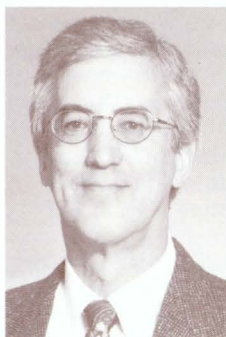
Before joining the Western Michigan University faculty, Josephine was the owner and principal of Montessori preschools in St. Joseph and Kalamazoo. After obtaining her M.A. and Ed.D. from Western, she joined the early childhood education faculty in 1997.

A specialist in preschool cognitive abilities for perception of space and time, Josephine has published numerous articles and conference papers on this subject as well as on aspects of global education. In addition to widely recognized excellence in the classroom, Josephine was active in the Diether H. Haenicke Institute for Global Education, managing for several years an internship program in her home town in elementary education, local history, journalism, and public administration for WMU students fluent in French. She also helped students found a WMU chapter of UNICEF. Together with many of her students in early childhood education, she has collected and donated thousands of dollars worth of home wares and supplies destined for local shelters for homeless parents and children.

An accomplished artist, Josephine plans to pursue her painting interests, with her husband Ronald Davis, tend a large vegetable and herb garden, cultivate an ecologically balanced life, and also spend time with her grandchildren.

Paul J. Eenigenburg

Professor of Mathematics



Paul J. Eenigenburg was born in Long Branch, New Jersey. He received his B.A. in mathematics from Hope College, Holland, Michigan, his M.A. in mathematics from Kansas University, and his Ph.D. in mathematics specializing in complex analysis from the University of Kentucky.

Paul began his career at Western Michigan University as an assistant professor of mathematics. He taught numerous courses over the years: calculus courses at the early undergraduate level, analysis courses at the upper undergraduate and graduate levels, and various seminars and independent study courses. He served the department in various administrative

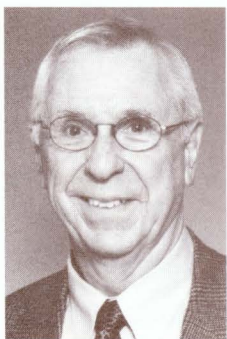
positions: director of modular mathematics, associate chair, and undergraduate coordinator. Additionally, he developed the mathematics curriculum and taught courses for the Academically Talented Youth Program (ATYP), serving mathematically gifted middle school children in southwestern Michigan.

Paul wrote numerous publications in complex analysis. He received a grant from the National Academy of Sciences to collaborate with colleagues in Lublin, Poland. He was recognized as an Exemplary Teacher by the Student Alumni Association of WMU. In four separate years, he received a Significant Educator Award from the Kalamazoo County Excellence in Education Program. Additionally, he received the national Edyth May Sliffe Award for Distinguished Junior High School Mathematics Teaching.

In retirement, Paul and his wife, Pat, hope to do more traveling since their children and grandchildren are scattered. Paul also plans to enjoy more reading, music, and golf. He has always enjoyed teaching and hopes to continue doing that part-time on occasion.

William A. (Arnie) Johnston

Professor and Chair of English



A United States citizen since 1962, William Arnold (Arnie) Johnston was born in Cambuslang, Scotland. He holds a Ph.B. in English from Wayne State University, and an M.A. and a Ph.D. in modern British and American literature from the University of Delaware.

He joined the Department of English at Western Michigan University in 1966, initially teaching courses in modern British and American literature, then concentrating his efforts in the creative writing program, which he co-founded in 1971. He also founded the playwriting program in 1975. Then he coordinated the writing staff's successful efforts to establish the M.F.A. in creative writing, and from its inception in 1981

largely coordinated the program itself for some seven years. He served on many departmental committees—Policy, TPC, Merit Pay, Graduate, and so forth—University and College Committees—like Faculty Research and Creative Activities Support Fund and College Curriculum—and for four years was the department's director of graduate studies. Arnie served as chairman of the English Department from 1997 to 2008. His service to the WMU-AAUP goes back to its beginnings as the faculty union in 1975. He helped negotiate four contracts, three as chief negotiator, and his service includes work in contract administration, grievance and arbitration, fact-finding, press relations, and more.

Many of Arnie's writing students have won prizes, publication, and production; and in 1990 he was recognized by the WMU Alumni Association's Teaching Excellence Award. His plays, and others written in collaboration with his wife, Deborah Ann Percy, have won awards, production, and publication across the country. His poetry, fiction, translations, and non-fiction have appeared widely in literary journals. Arnie is an accomplished actor-singer, having performed some 100 roles on stage and radio, as well as many concerts. Since 2001 over a dozen of his and Debby's radio dramas have been broadcast on WMUK-FM as part of the Kalamazoo Arts Council's *All Ears Theatre* series. Arnie is listed in numerous national and international directories of writers and performers; he has received grants and awards from WMU, the Michigan Council for the Arts, the Kalamazoo Foundation, the Irving S. Gilmore Foundation, and the American Association of University Professors. He and Debby have won the Dogwood (1990) and Market House Theatre (1991) one-act competitions, as well as the *Writer's Digest* Script Competition (1992) and Sunset Center's 1992 Festival of Firsts. They have won recognition and/or production from such institutions as Actors Theatre of Louisville, the Attic Theatre Centre (LA), the University of Arkansas, the University of St. Thomas, Theatre Memphis, Samuel French, New Dramatists, Rattlestick Productions, West Coast Ensemble, Actors' and Playwrights' Initiative, the New Hope Arts Commission, and the Trustus Theatre.

Arnie and Debby are looking forward to traveling, enjoying their second home in South Haven, and concentrating full-time on writing.

Norman M. Kiracofe

Professor of Counselor Education and Counseling Psychology



Norman M. Kiracofe, a native of Michigan, earned a B.A. in psychology from Manchester College, North Manchester, Indiana, an M.A. in experimental psychology from Western Michigan University, and a Ph.D. in counseling psychology from Temple University. He is licensed as a professional psychologist in the states of Michigan and New York, and as a professional counselor in Michigan. Before joining the faculty at WMU he held professional appointments at the Spalding Youth Center in Tilton, New Hampshire; Temple University; and the State University of New York College at Buffalo.

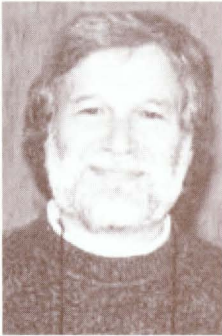
Norman joined the faculty of WMU in the fall of 1986 as an associate professor and director of the University Counseling Center. He served as department chair and director of counseling for 14 years. During his tenure as administrator, specialized services for substance abuse were developed, the university testing program was integrated into the counseling center, and formal pre-doctoral internship training was instituted for doctoral level psychologist trainees. In 2000 he assumed a full-time faculty role in the Counselor Education and Counseling Psychology Department. His research and scholarship has been focused in the area of college and university counseling practices.

Norman has been recognized for his work with the International Association of Counseling Services, the accreditation association for college and university counseling centers. He has served as accreditation board chair and president of the association and has been instrumental in the formulation of professional practices and accreditations standards.

In retirement, Norman plans to explore and write in the area of family history, continue a service role through volunteer activities, travel, and spend much more time with family.

Gerald E. Markle

Professor of Sociology



Gerald E. Markle was born in Michigan and received his bachelor's degree in biology from Wayne State University. He also received his M.A. in microbiology there and matriculated to Florida State University. Although Jerry went to Florida to pursue a Ph.D. in molecular biology, he was a.b.d. in that discipline by 1968. At some point he realized his real interest was in sociology. Jerry received his M.A. in sociology from Florida State and his Ph.D. there in 1972.

Apart from a stint as visiting professor in the Program on Science, Technology and Society in the Department of Sociology at Cornell in 1968, Jerry's entire academic career was at Western Michigan University.

He began here in 1971 and taught a wide range of courses in his specialty areas of sociology of science, holocaust studies and social movements, as well as most of the core offerings in theory and methods. He was widely sought after as a mentor and dissertation chair and many of his students went on to very successful academic careers. He is particularly proud that several of his students were able to publish their dissertations as books with respected academic presses.

Jerry's own academic record has truly been a credit to the University. First, his publication and scholarship record in sociology is exemplary: important books, articles in the top journals, and a consistent output over time and across several important areas of the discipline. Second, and even more to the point, there is a humanity to his work – both in content and in style – that has done honor to the discipline and to his home institution. He received numerous regional and national awards for his work including the Distinguished Scholarly Achievement Award of the North Central Sociological Association and the Charles Horton Cooley Award for Distinguished Contributions to Sociology from the Michigan Sociological Association.

He is now living with his wife, Fran, in San Francisco where he continues to write and even occasionally to teach. Jerry's long service to the Department of Sociology and to Western Michigan University is an example to his colleagues and his work continues to be cited and discussed both here and throughout the discipline.

Gwendolyn Nagle

Professor of Theatre



Gwendolyn Nagle grew up in Decatur, Michigan. She was valedictorian in her high school class. She pursued her college education at the University of Michigan where she received a bachelor's degree in mathematics, along with a teaching certificate in math, and a master's degree in speech. She completed graduate work at Carnegie Mellon University in Pittsburgh with an M.F.A. in costume design for theatre.

After graduating, Gwen began a career in education, teaching costume design at Mount Holyoke College in Massachusetts. She continued to pursue teaching at the University of Texas at Austin, the University of New Mexico, Ohio State University, and Southern Methodist

University in Dallas. When a position became open at Western Michigan University, near her hometown and family, she joined the Theatre faculty and has been here for eighteen years.

Gwen supervises all costuming for the University Theatre production season. She has designed more than 40 productions for the WMU Theatre Department. She has supervised more than 50 student designed productions for the department. While at the University her professional service has included the Faculty Senate's Admissions, Financial Aid, and Student Affairs Council, the University Sabbatical Leave Committee, the Executive Committee of the WMU-AAUP, the Research Screening Committee, the College of Fine Arts Promotion Committee, and numerous departmental committees. Her costume designs have been seen at the Colorado Shakespeare Festival, the Texas Shakespeare Festival, the New Mexico Repertory Theatre, the New Horizon Theatre Company, and Dartmouth's Summer Theatre Program. She is actively involved in the United States Institute for Theatre Technology and has been on the board of the Midwest Section of USITT.

It is not surprising that Gwen's hobbies are sewing and watercolor painting. She loves history and is an avid genealogist. Upon retirement, she hopes to complete her family genealogy and start on the family history of her husband, Warren. Both plan to stay in the Kalamazoo area where everything is at their finger tips, including museums, art classes, fabric stores, and friends. During the winters they hope to visit family in Florida.

Gerard T. Nowak

Associate Professor of University Counseling



Gerard T. Nowak (known to many as Jerry) was born and raised in Grand Rapids and pursued higher education at Western Michigan University. He earned a bachelor of arts in teacher education with a major in history and minor in social science, and he received a master of arts in counseling and guidance in the Department of Counselor Education and Counseling. His interest in statistics and test development combined with his desire to help students live productive and meaningful lives led him to specialize in career counseling and to become a certified Master Career Counselor. For nearly four decades, Western Michigan University has benefited from his dedication, knowledge, skill, and service as

a career counselor, supervisor, administrator, teacher, test developer, and consultant. He spent twenty-six years as associate director of the Testing and Evaluation Services before joining the faculty in the University Counseling and Testing Center in 1996.

The showpiece of Jerry's work that best exemplifies the blending of his competence and commitment to service is the Career Guidance Inventory (CGI). Jerry developed this comprehensive career assessment tool more than 30 years ago and regularly revised it over the years. The CGI has been used to facilitate career decision making through career counseling and assessment with thousands of students, professionals, and others seeking career direction at the University and throughout the broader community. He has also trained many graduate students and professional counselors in the administration and interpretation of the CGI.

Jerry's expertise was recognized by national testing agencies that recruited him to write questions for their tests. He wrote a Corporate Personnel Manual, a Training Program for Faculty Classroom Measurement, and an Evaluation and Graduate Assistant Training Program for Career Assessment and Counseling. He has written several other test and training manuals and published in the area of career counseling. During his years of distinguished service at WMU, Jerry's greatest passion was his commitment to students and trainees with whom he worked tirelessly and passionately. For his selfless contributions they are better people and Western a richer place.

Though now in retirement, Jerry maintains an active life style. A talented athlete his entire life and an avid lover of the outdoors and wilderness, his hiking, biking, tennis, kayaking, and golf now take place in sunny Arizona where he lives with his wife, Mary. When not engaged in these activities you can find Jerry and Mary taking in the theatre, art galleries, and sampling the restaurants around their new southern Arizona home.

Cindee Quake-Rapp

Professor of Occupational Therapy



Cindee Quake-Rapp was born in Kalamazoo, Michigan. She earned a bachelor's degree in occupational therapy and a master's degree in counseling and personnel from Western Michigan University; and a Ph.D. in child health policy from the Union Institute and University in Cincinnati.

Cindee began her career in occupational therapy at the Coldwater Regional Center for Developmental Disabilities in Coldwater, Michigan. Subsequent positions were at St. Joseph Lodge Rehabilitation After-Care Center and Lakeside Residence for Boys and Girls in Kalamazoo. Cindee came to WMU in 1980 as the clinic coordinator for the Marion R. Spear Teaching Clinic and

over the next 28½ years moved through the academic ranks to full professor. Cindee chaired the Department of Occupational Therapy from 1999 until her retirement. Some of her many contributions as chair include raising the national ranking of the O.T. department in the state to number one; development of a 4+1 program that embeds a Bachelor of Science in Interdisciplinary Health Studies as a feeder to the occupational therapy graduate program in response to the AOTA's requiring post baccalaureate entry into the O.T. profession; expanding the O.T. program to the tri-county area in Grand Rapids, and developing tele-health technology to deliver curricula to remote campuses.

Cindee has authored over 40 peer reviewed publications and has presented nationally and internationally on her area of scholarship in pediatric occupational therapy. She has been honored with an outstanding faculty award from the Michigan Association of Governing Boards of State Universities and was awarded a leadership mentoring fellow from the American Occupational Therapy Association and American Occupational Therapy Foundation.

Cindee has embarked on a second stage of her career in accepting a position as director of the Center for Allied Health Programs at the University of Minnesota. The goal of the center is to respond to increasingly serious workforce shortages of allied health professionals in Minnesota through signature academic partnerships with learners, communities, health care industries, and Minnesota State Colleges and Universities.

Cindee and her husband, Mitch Rapp, have six children and two large rescue dogs. Mitch will be commuting from Kalamazoo to Minneapolis until their youngest son graduates from high school.

Judith J. Sadler

Associate Professor of Nursing



Judith J. Sadler was born in Fremont, Michigan. She received her B.S.N. degree from Northern Michigan University, her M.S. in nursing health services administration from the University of Michigan, and her Ph.D. in nursing from the University of Wisconsin, Milwaukee.

Judith's academic career began in 1990 at the College of Nursing, University of Wisconsin, Oshkosh, and continued at Lake Superior State University. She joined the Western Michigan University faculty in 1998 as an assistant professor, teaching in the relatively new Bronson School of Nursing (BSON) with a strong background in nursing services administration and academic leadership. During her tenure at WMU, Judith not only taught in the classroom and clinical settings, but was called upon to serve as acting director in the summer of 1999 and then as coordinator of the undergraduate program for a year until a fulltime director of the BSON was hired in fall 2000.

As an experienced educator, Judith contributed much to the ongoing development of the WMU Bronson School of Nursing. Her prior academic experiences in nursing were welcomed at WMU where she taught most of the undergraduate nursing courses on campus as well as at the Lake Michigan College and Three Rivers Health extension campuses. She has worked with, taught, and counseled all levels of undergraduate students in the generic BSN program and with nurses returning for their baccalaureate degrees (RN-BSN). She also led the major curriculum revision for the undergraduate BSN program, providing the conceptual thought, organization, and outcomes measures needed to accomplish this daunting task.

As an experienced nursing services administrator, Judith was instrumental in the development of the nurse leader/manager track within the new Master of Science in Nursing program that admitted its first class in fall 2006. She also continued her administrative consultations including providing leadership to Three Rivers Health administration focusing on enhancing professional nursing practice there. During her sabbatical year and for the past two years, she worked on the project for Excellence in Clinical Education, Practice, and Scholarship at the University of Michigan Health System. She is a nationally recognized expert in nursing service administration and serves as a Magnet Program appraiser to evaluate quality in hospitals throughout the nation.

In summary, Western has benefited greatly from the expertise and leadership of Judith during her 11 years here. She helped strengthen the undergraduate programs in nursing and the development of the administrative content in the new graduate program in nursing. She brought national recognition to the WMU BSON through her participation as a Magnet Program appraiser since 2001 and an accreditation site visitor for the Commission on Collegiate Nursing Education since 2002. She mentored junior nursing faculty in their development as academics and nurse managers in Southwest Michigan resulting in a stronger professional nursing presence regionally and nationally. She will no doubt continue her national and international teaching and health services administrative leadership. Her colleagues wish her continued success.

Radu Teodorescu

Master Faculty Specialist of Mathematics



Radu Teodorescu was born in Mag-Sacel, Sibiu County, Romania. After graduating from N. Grigorescu High School in Cimpina, Romania, he went to Babes-Bolyai University, College of Mathematics, in Cluj and graduated with a specialty in Mathematical Analysis. Later, he enrolled in the Ph.D. program at the University of Bucharest in Functional Analysis, specializing in Operator Theory under Professor Ciprian Foias. He defended his thesis, "On Direct Decompositions of Contractions on Hilbert Spaces" in 1975.

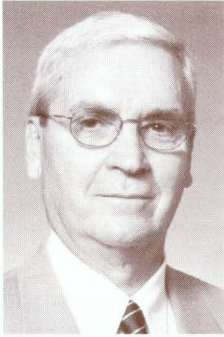
In September 1964, he started teaching as an instructor at the University of Brasov (actually Transylvania University) in Romania. At this university he successfully applied for assistant professor in 1972 and associate professor in 1981. In the period 1982-1984, he took a position of visiting associate professor at the University of Blida, Algeria (teaching in French) and in 1984 he returned to the University of Brasov. He and his family left Romania in 1987 and he taught in France for one year at the University of Nantes as a visiting associate professor. In 1988 they came to the United States, to Grand Rapids, and in 1989 he started teaching at Western Michigan University and other colleges in West Michigan. At WMU he taught a large variety of topics from developmental mathematics to graduate courses, basically all graduate courses related to analysis. In 1997, pressed by the need of a permanent job and health care coverage, he applied for, and accepted the position of director of the Modular Mathematics Program. From this position he retired at the end of 2008.

He researched and published in the most prestigious mathematical journals in his specialty: the *Journal of Functional Analysis* (two papers), *Operator Theory: Advances and Applications* (one paper), *Acta Scientiarum Mathematicarum* (Szeged) (four papers), *Integral Equations and Operator Theory* (one paper), and the *Houston Journal of Mathematics* (one paper). His research work totals 17 published papers and three books, together with many presentations at international congresses or scientific meetings.

As a retiree, he plans to keep in contact with his work place and colleagues, to help his daughter-in-law with her tutoring business, to continue his love affair of a life with mathematics, and most of all, to watch and enjoy how his grandchildren grow up. If on top of this, if he is able to travel and see new or interesting places, it will be nothing but the icing on the cake.

Gary L. Wegenke

Professor of Educational Leadership, Research, and Technology



Gary L. Wegenke was born in South Bend, IN. He received his undergraduate degree from DePauw University in Greencastle, IN, a master of science degree from Indiana University in Bloomington, and a Ph.D. from Ohio State University in Columbus, OH. While attending OSU, he was a graduate research associate and project director at the Evaluation Center.

Gary began his teaching career in 1961 in South Bend, IN, teaching mathematics to high school students. Later he became a high school principal in Lansing, MI. Over an 11 year period (1972-1983) in Lansing, he also served as the director of finance and as deputy superintendent for operations. He was an active

leader in the school district's desegregation planning initiatives. In 1983, Gary was appointed superintendent of the Waterloo, Iowa Community Schools. His leadership during the "farm crisis" benefited students, faculty, and the community as they redesigned their school system to address tough economic times. From 1988 to 1998, Gary was superintendent of schools in Des Moines. School transformation and student achievement issues became the focus of his leadership in the 33,000 student school system.

In 1998, he came to Western Michigan University and served as a senior research associate in the Evaluation Center. He was appointed an associate professor in the department of Teaching, Learning, and Leadership in 1999, and served in that role until 2003. Gary's research agenda focused on the theory and practice of systems thinking applied to school settings. In 2003, he was appointed dean of the College of Education, and is completing his seventh year in that role. His calm presence and thoughtful approach to problem-solving provided the college with stability throughout many changes including college reorganization and budget downsizing. Gary's 48 year record of service to public schools and WMU has earned the respect of his colleagues and students whose lives he has touched. Moreover, he continues to be a valued friend and mentor to numerous faculty, staff, and students on campus and in the wider community.

His future plans include spending time with his wife, Sandra, his children, grandchildren, and friends at their lake home in Elk Rapids, MI. However, several of his colleagues are betting he will return to some form of professional and/or community service. Hopefully he will find time to play a few rounds of golf.

Arthur T. White

Professor of Mathematics



Arthur T. White was born in Summit, New Jersey. He received a B.A. in mathematics from Oberlin College, and an M.S. and a Ph.D. in mathematics from Michigan State University.

Between 1961 and 1965, Art worked for one year as an actuarial trainee at the Home Life Insurance Company in New York City, and then (following the erection of the Berlin Wall), he served for three years as a communications/electronics officer in the United States Air Force. Art began teaching at Western Michigan University in 1969, and for the next 39.5 years he taught a large variety of classes and seminars at both the undergraduate and the graduate level in the Department of Mathematics, as well as the Good Books course (six times) in the Department of English. Eleven doctoral students completed their mathematics dissertation research under his direction. He enjoyed four sabbatical years to England, including one year as a visiting professor at Royal Holloway College, University of London, one year as a visiting fellow and two years as a visiting scholar at Wolfson College, University of Oxford. He also served as visiting lecturer at Clemson University, Kalamazoo College, and for the Mathematical Association of America, and as visiting scholar to the University of Sydney and to Australian Catholic University.

Art has received numerous awards, including the WMU Distinguished Faculty Scholar Award (1987), the WMU Alumni Association Teaching Excellence Award (1988), a Michigan Teaching Excellence Award (1990), the Michigan Section of the Mathematical Association of America Award for Distinguished College or University Teaching of Mathematics (1996), election as a WMU Foundation Member of Phi Beta Kappa (1998), and recognition as a Lee Honors College Faculty Fellow in 2005. In his research specialty of topological graph theory, he has published five books (one co-authored), six chapters in other books (one co-authored), dozens of research articles and expository articles, one poem, and three compositions for English church bells. He has given more than two hundred professional presentations in nine countries, culminating in the featured plenary address at the conference in Geometric and Topological Graph Theory in Paris in 2008.

Art plans to stay in Kalamazoo after retirement, although he and his wife, Liz, will likely continue escaping to Alabama during the winter, and traveling to Europe and elsewhere over the summer. In between, Art hopes to do some part-time teaching at Western, continue with his research program, and enjoy literature, music, and art as well as hiking (actively) and various sports (passively). He will continue as faculty advisor to the WMU College Republicans, as a member of the Michigan Association of Scholars Executive Board, and as a member of the Michigan State Advisory Committee to the U.S. Commission on Civil Rights.



ALMA MATER

Brown and Gold

Western we sing to you,
Brown and Gold.
Western we bring to you,
faith untold.
You challenge and inspire;
Your hope is our desire.
We sing to you our Alma Mater,
Brown and Gold.

(James Bull '57 and Walter Gilbert '64)

**THE FACULTY RETIREMENT
RECOGNITION COMMITTEE
of the Faculty Senate**

Darryl A. Salisbury (Chair)
Career English Language Center for International Students

Beth Amidon
Department of English

Ruth Heinig
Emeriti Council

Mark Liermann
Department of Theatre

**SPECIAL APPRECIATION
IS EXTENDED TO**

Office of the President
Suzanne M. Davenport, Faculty Senate Office
Catering Services
University Relations
J. B. Printing Company
and all of the others who participated
in planning this special event.

