



Western Michigan University
ScholarWorks at WMU

Legacy Scout Tickets from Pure Oil Company

8-20-2021

MGRRE_PureOilScoutTickets_ALEX MILNE_1_21011047550000

MGRRE

Western Michigan University

Follow this and additional works at: <https://scholarworks.wmich.edu/pure>



Part of the Geology Commons

WMU ScholarWorks Citation

MGRRE, "MGRRE_PureOilScoutTickets_ALEX MILNE_1_21011047550000" (2021). *Legacy Scout Tickets from Pure Oil Company*. 128.

<https://scholarworks.wmich.edu/pure/128>

This Document is brought to you for free and open access via ScholarWorks at WMU. It has been accepted for inclusion in Legacy Scout Tickets from Pure Oil Company by an authorized administrator of ScholarWorks at WMU. See the National Digital Catalogue - Science Base Catalogue for more collections submitted by MGRRE.



MGRRE_PureOilScoutTickets_ALEX MILNE_1_21011047550000

API 21011047550000

Permit Number 4755

Lease Name ALEX MILNE

Well Number 1

County Arenac

Township 19N

Range 3E

Section 25

2021 DEQ or Pure co_name RAYBURN DON F

Pure Number 133

Latitude 44.0233

Longitude -84.05447

DATE February 19, 1941

LOCATION REPORT

No. 133

February 13, 1938

STATE Michigan COUNTY Arenac

TWP. Adams

SEC. 25

TOWN 19 N RANGE 3 E

WELL No. 1 (SERIAL No. 133) FARM Alex Milne ACRES

NAME OF STREAM OR WATERS QUADRANGLE SW NW NE

OPERATOR Don Rayburn (Change of Operator Map Adams Township, Arenac County

Feet from North Line of Farm

" " East " " "

" " South " " "

" " West " " "

Feet from North Line of Section

" " East " " "

" " South " " "

" " West " " "

LEGEND

○ LOCATION

① RIG

⊕ DRILLING

☀ GAS WELL

● OIL WELL

◆ SMALL OIL WELL

⊙ DRY HOLE

◆ DRY SHOWING OIL

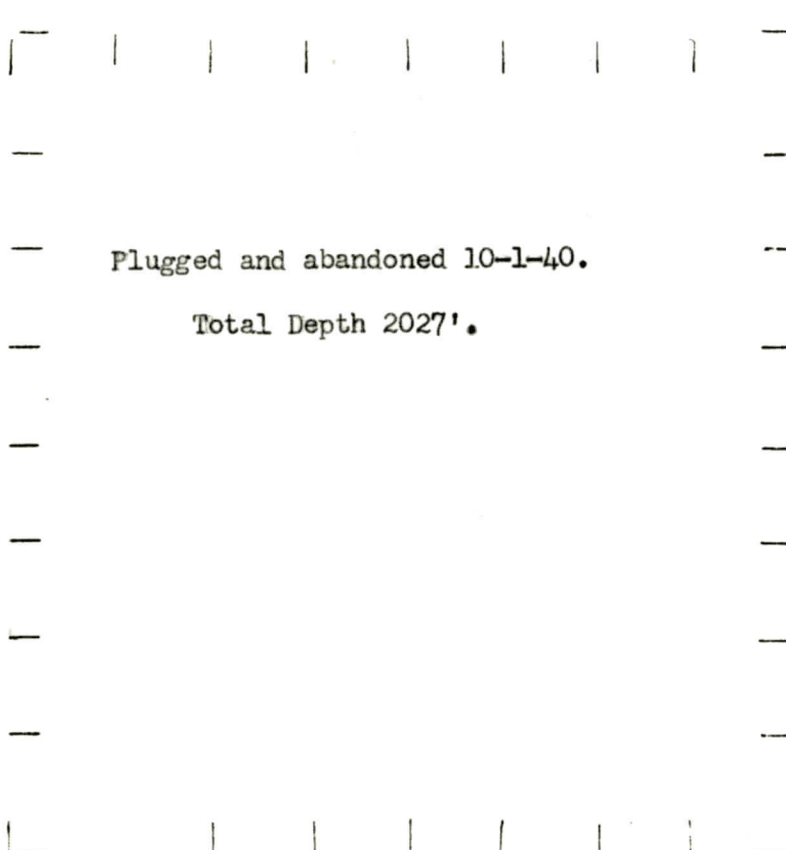
⊙ DRY SHOWING GAS

⊙ ABANDONED LOCATION

☀ ABANDONED GAS WELL

◆ ABANDONED OIL WELL

NOTE: Below make tracing from map, (when no map is obtainable make sketch) showing farm, center of section, this location with measurements and also wells, dry holes, or other locations in the vicinity of this location.



REMARKS:

SIGNED

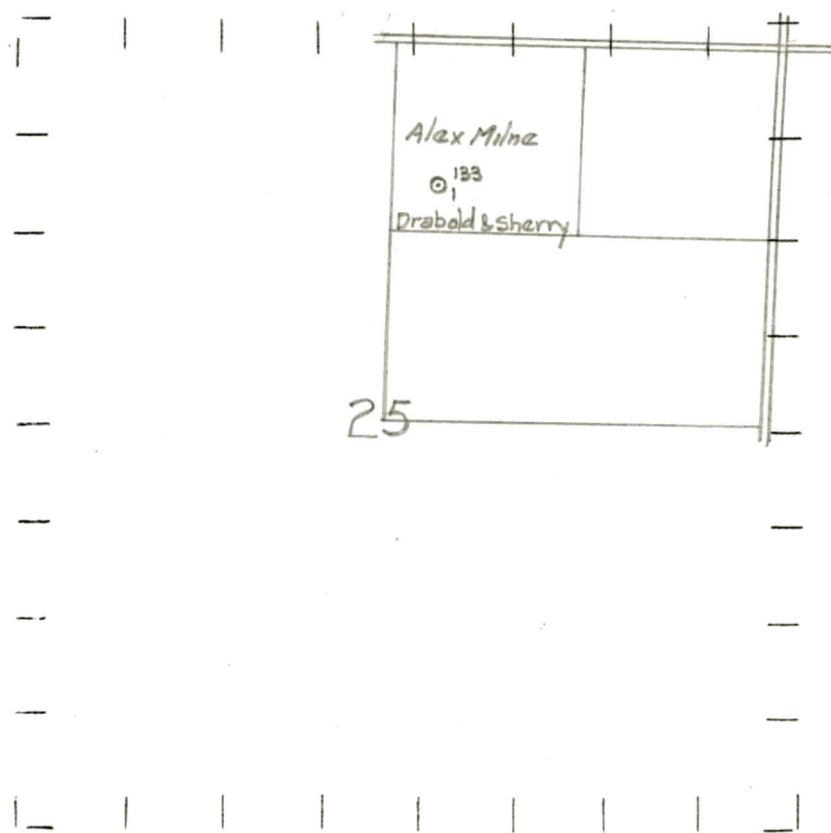
Suberintendent or Foreman.

OBSERVATION Don B. Smith (Charles of Oberlin) ASB Adams Township, Arenac County
 NAME OF STREAM OR WATER QUADANGLE SW NW NE
 WELL No. 1 (SERIAL No. 133) FARM Alex Milne ACRES
 STATE Michigan COUNTY Arenac DIST. Adams SEC. 25 TOWN 19 N RANGE 3 E
 NAME OF STREAM OR WATERS _____ QUADRANGLE SW NW NE
 OPERATOR Drabold and Sherry Map Adams Township, Arenac County
Drabold & Sherry Adams - Arenac
 Feet from North Line of Farm _____
 " " East " " "
 33330 " " South " " "
 33330 " " West " " "
 99090 Feet from North Line of Section _____
 " " East " " "
 " " South " " "
 330330 " " West " 1/4 "

- LEGEND**
- LOCATION
 - ⊙ RIG
 - ⊕ DRILLING
 - ☼ GAS WELL
 - OIL WELL
 - ⬮ SMALL OIL WELL
 - ⊙ DRY HOLE
 - ⬮ DRY SHOWING OIL
 - ⊙ DRY SHOWING GAS
 - ⊙ ABANDONED LOCATION
 - ☼ ABANDONED GAS WELL
 - ⬮ ABANDONED OIL WELL

NOTE: Below make tracing from map, (when no map is obtainable make sketch) showing farm, center of section, this location with measurements and also wells, dry holes, or other locations in the vicinity of this location.

10-1-40



REMARKS:

SIGNED R. L. Hagan
 Superintendent or Foreman.

