



Western Michigan University
ScholarWorks at WMU

Legacy Scout Tickets from Pure Oil Company

8-20-2021

MGRRE_PureOilScoutTickets_BERRY,
ARCHIE_3_21011054110000

MGRRE
Western Michigan University

Follow this and additional works at: <https://scholarworks.wmich.edu/pure>



Part of the Geology Commons

WMU ScholarWorks Citation

MGRRE, "MGRRE_PureOilScoutTickets_BERRY, ARCHIE_3_21011054110000" (2021). *Legacy Scout Tickets from Pure Oil Company*. 146.
<https://scholarworks.wmich.edu/pure/146>

This Document is brought to you for free and open access via ScholarWorks at WMU. It has been accepted for inclusion in Legacy Scout Tickets from Pure Oil Company by an authorized administrator of ScholarWorks at WMU. See the National Digital Catalogue - Science Base Catalogue for more collections submitted by MGRRE.



MGRRE_PureOilScoutTickets_BERRY, ARCHIE_3_21011054110000

API 21011054110000

Permit Number 5411

Lease Name BERRY, ARCHIE

Well Number 3

County Arenac

Township 20N

Range 4E

Section 4

2021 DEQ or Pure co_name LEASE MANAGEMENT INC

Pure Number 156

Latitude 44.1569642

Longitude -83.9988307

THE PURE OIL COMPANY
LOCATION REPORT

Date Oct. 10, 1946 Corrected

A.F.E. No. _____

Division Mich. Producing District _____ Lease Archie Berry

Acres _____ Lease No. _____ Elevation _____ Well No. 3 (Serial No. 156)

Quadrangle SE SE SW Sec. 4 Twp. 20 N Rge. 4 E <sup>XBLK
EDGE.</sup> Twp. Clayton

Survey _____ County Arenac State Michigan

Operator Gordon Oil Company Map Clayton Township, Arenac County

_____	Feet from North Line of Lease
_____	" " East " " "
_____	" " South " " "
_____	" " West " " "
_____	Feet from North Line of Section
_____	" " East " " "
_____	" " South " " "
_____	" " West " " "

LEGEND

○ Location

 Gas Well

● Oil Well

 Gas - Distillate Well

○ or ○ Dry Hole

● Dry Showing Oil

 Dry Showing Gas

 Abandoned Location

 or  Abandoned Gas Well

● or ● Abandoned Oil Well

● or ○ Input Well

See plat - Arenac #156.



Remarks: Change of operator.

Scale _____

Submitted by Scouting Dept.

~~COO:RDB:DEK~~

Approved by _____ Division Manager

Approved by _____ Vice-President - General Manager

Division Mich. Geological District Clayton Lease Viscote Berry

Date Dec 10 1900 Collected LOCATION REPORT VEE No. 156

STATE Mich. COUNTY Arenac DIST. Clayton TWP. Clayton SEC. 4 TOWN 20 N RANGE 4 E

WELL No. 33 (SERIAL No. 156) FARM Archie Berry ACRES SE-SE-SW

NAME OF STREAM OR WATERS _____ QUADRANGLE SE SE SW

OPERATOR Weber Oil Company Map Clayton-Arenac
Weber Oil Co. Clayton-Arenac

Feet from North Line of Farm

330	330	"	"	East	"	"	"
330	330	"	"	South	"	"	"
330	330	"	"	West	"	"	"

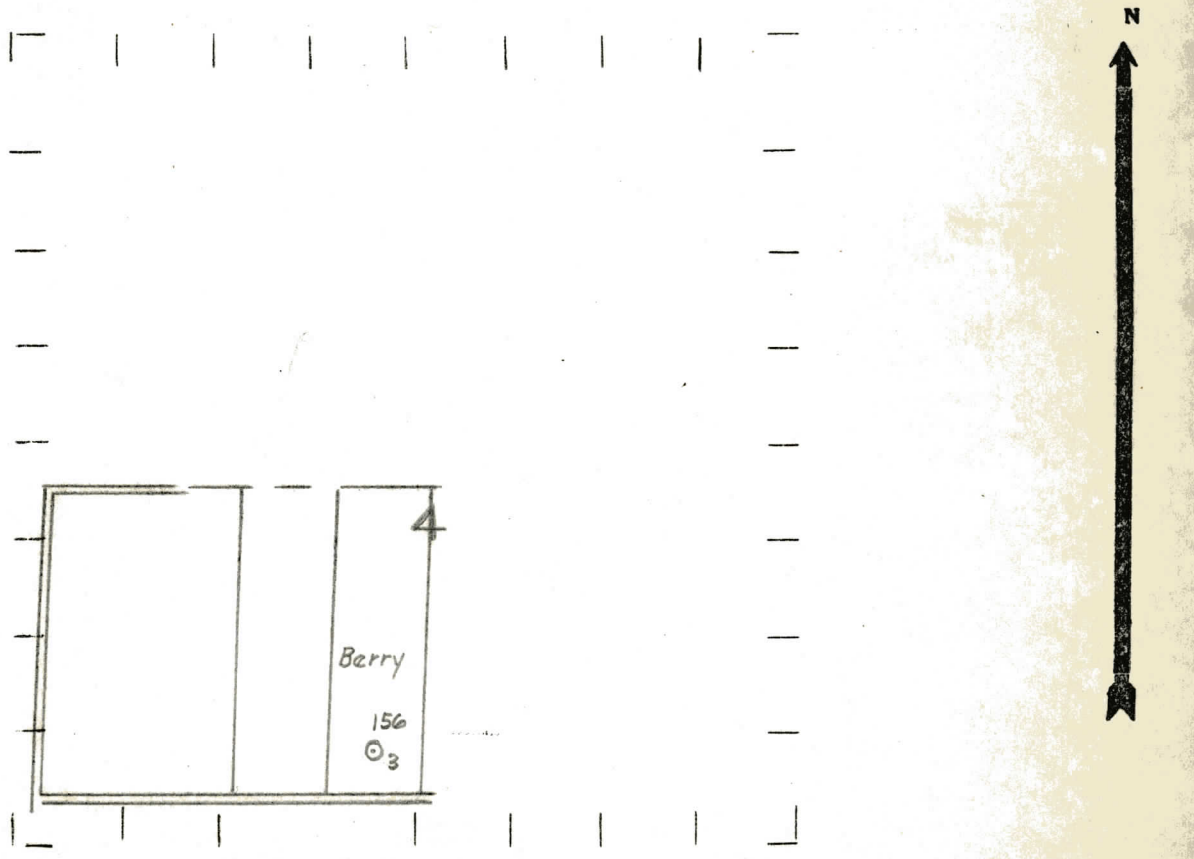
Feet from North Line of Section

330	330	"	"	East	"	"	<u>17</u>
330	330	"	"	South	"	"	<u>4</u>
		"	"	West	"	"	"

LEGEND

- LOCATION
- ⊙ RIG
- ⊕ DRILLING
- ☼ GAS WELL
- OIL WELL
- ⬮ SMALL OIL WELL
- ⊙ DRY HOLE
- ⬮ DRY SHOWING OIL
- ⊙ DRY SHOWING GAS
- ⬮ ABANDONED LOCATION
- ☼ ABANDONED GAS WELL
- ⬮ ABANDONED OIL WELL

NOTE: Below make tracing from map, (when no map is obtainable make sketch) showing farm, center of section, this location with measurements and also wells, dry holes, or other locations in the vicinity of this location.



REMARKS:

SIGNED R. L. J.
Superintendent or Foreman.

Signed **D. C. Shackelford**