



Western Michigan University  
ScholarWorks at WMU

---

Legacy Scout Tickets from Pure Oil Company

---

8-20-2021

MGRRE\_PureOilScoutTickets\_BERRY,  
ARCHIE\_2\_21011066660000

MGRRE  
*Western Michigan University*

Follow this and additional works at: <https://scholarworks.wmich.edu/pure>



Part of the Geology Commons

---

#### WMU ScholarWorks Citation

MGRRE, "MGRRE\_PureOilScoutTickets\_BERRY, ARCHIE\_2\_21011066660000" (2021). *Legacy Scout Tickets from Pure Oil Company*. 163.  
<https://scholarworks.wmich.edu/pure/163>

This Document is brought to you for free and open access via ScholarWorks at WMU. It has been accepted for inclusion in Legacy Scout Tickets from Pure Oil Company by an authorized administrator of ScholarWorks at WMU. See the National Digital Catalogue - Science Base Catalogue for more collections submitted by MGRRE.



---

**MGRRE\_PureOilScoutTickets\_BERRY, ARCHIE\_2\_21011066660000**

API 21011066660000

Permit Number 6666

Lease Name BERRY, ARCHIE

Well Number 2

County Arenac

Township 20N

Range 4E

Section 9

2021 DEQ or Pure co\_name BERRY CECILE

Pure Number 174

Latitude 44.14419

Longitude -83.98845

COMPLETION RECORD OF THE PURE OIL COMPANY OPERATORS

DATE August 31, 1939

LOCATION REPORT

No. 174

STATE Michigan COUNTY Arenac TWP. Clayton SEC. 9 TOWN. 20 N RANGE 4 E  
WELL No. 22 (SERIAL No. 174) FARM Archie Berry ACRES

NAME OF STREAM OR WATERS QUADRANGLE NE-SE SE

OPERATOR W. E. Ross Archie Berry 9-17-52 Map Clayton Township, Arenac County

W. E. Ross

Clayton - Arenac

Feet from North Line of Farm

40400

" " East " " "

920920

" " South " " "

" " West " " "

Feet from North Line of Section

40400

" " East " " "

920920

" " South " " "

" " West " " "

LEGEND

○ LOCATION

① RIG

⊕ DRILLING

☼ GAS WELL

● OIL WELL

● SMALL OIL WELL

⊙ DRY HOLE

⊙ DRY SHOWING OIL

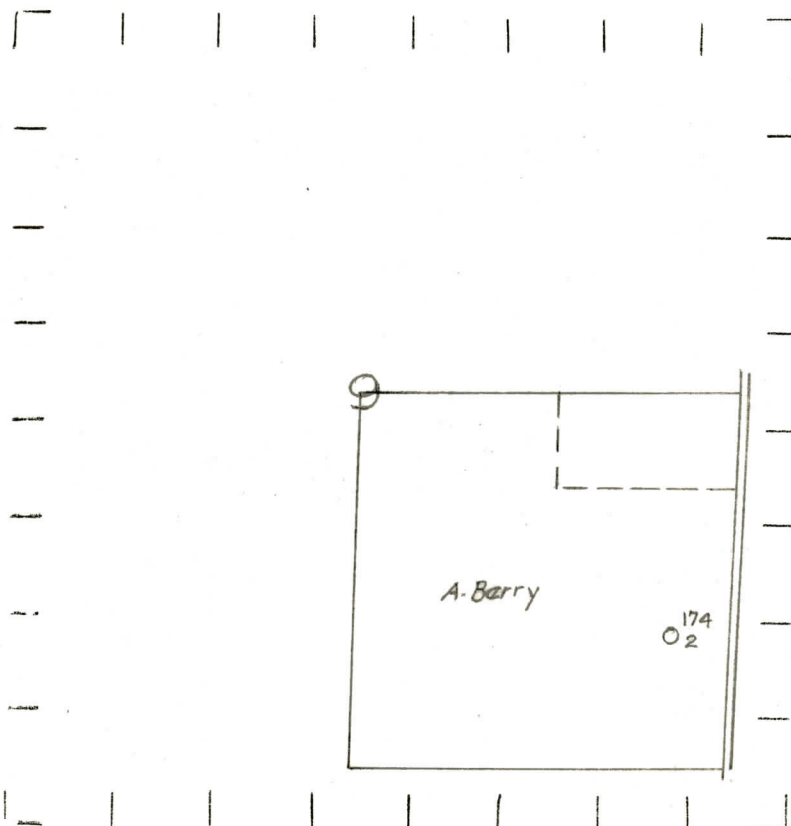
⊙ DRY SHOWING GAS

⊙ ABANDONED LOCATION

⊙ ABANDONED GAS WELL

⊙ ABANDONED OIL WELL

NOTE: Below make tracing from map, (when no map is obtainable make sketch) showing farm, center of section, this location with measurements and also wells, dry holes, or other locations in the vicinity of this location.



REMARKS:

SIGNED

Superintendent or Foreman.



